

RAFIX 22 FS

Contact blocks

PCB gold

→ Illumination information

The PCB contact blocks are included into the PCB layout and arranged next to other components. They are located directly behind the actuators at a distance of only 9.2 mm behind the front panel.

When actuators shall be illuminated there are 2 alternative LED technologies.

THT LEDs: Can be assembled and soldered together with the PCB contact blocks.

SMT LEDs: Can be pre-assembled and soldered with other SMT components. Then they are covered by the PCB contact blocks with light conductor.



2

Technical Data

→ General information

Lamp optional	see order block
---------------	-----------------

→ Mechanical design

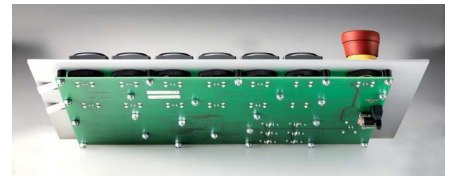
Mounting	soldering in PCB
Contact system	bridge-contact self cleaning
Contact materials	Au
Contact arrangement	see order block
NC contact forcibly actuated acc. to IEC 60947-5-1	yes
Terminals	THT solder terminals with locating lug

→ Electrical characteristics

Operating voltage AC / DC min.	5 V
Operating voltage AC / DC max.	35 V
Operating current AC / DC min.	1 mA
Operating current AC / DC max.	100 mA
Rated power max.	250 mW

→ Other specifications

Operating life at 10 mA / 24 V DC	see order block
B10	see order block
Switching reliability at 24V / 5mA DC	10×10^6
Ambient temp. operating max.	+85 °C
Ambient temp. operating min.	-40 °C
Storage temperature min.	-40 °C
Storage temperature max.	+85
Color of plunger	see order block
Robustness	acc. to IEC 60947-5-5 (TÜV)
Shock resistance acc. to IEC 60068-2-27	15 g at 11 ms, amplitude half sinusoidal
Resistance to vibrations acc. to IEC 60068-2-6	5 g at 10 ... 500 Hz
Environmental resistance	acc. to IEC 60068-2-14, -30, -33 and -78
Solderability / solder heat resistance	DIN EN 60068-2-20
Solder techniques	wave solder bath / manual soldering
Color of housing	grey
ROHS compliant	yes
REACH compliant	yes



Approvals



IEC 60947-5-x



UL 508

Distributed by:








www.texim-europe.com

Contact
blocks

CONTROL COMPONENTS

RAFIX FS - CONTACT BLOCKS PCB GOLD

Accessories RAFIX 22 FS - Contact block PCB gold

→ Description	Photo	Order no.	Additional accessories see page
LED 3 mm		-	-
LED base for 3 mm THT LED, used in signal indicators, for RAFIX FS PCB		-	2 - 263
SMT LED		-	2 - 263
Spacers, round		-	2 - 265, 4 - 97, 5 - 32
Spacers, triangular		-	4 - 98, 5 - 33



RAFIX FS Contact block PCB gold, Universal, with light conductor

Technical data see page 2 - 241



→ Contact arrangement	Lamp optional	Operating life at 10 mA / 24 V DC	B10	Color of plunger	Order no.
1 NO	SMT LED	1,000,000	1,300,000	green	1.20.126.002/9000
1 NC	SMT LED	1,000,000	1,300,000	red	1.20.126.001/9000
2 NO	SMT LED	1,000,000	1,300,000	green	1.20.126.005/9000
2 NC	SMT LED	1,000,000	1,300,000	red	1.20.126.004/9000
1 NC + 1 NO	SMT LED	1,000,000	1,300,000	red and green	1.20.126.003/9000

Caution: can not be used with emergency stop and mushroom headed pushbuttons.

DISTRIBUTED BY TEXIM EUROPE

RAFIX FS Contact block PCB gold, Universal

Technical data see page 2 - 241

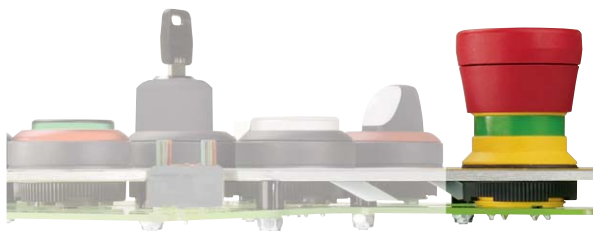


→ Contact arrangement	Lamp optional	Operating life at 10 mA / 24 V DC	B10	Color of plunger	Order no.
1 NO	THT LED	1,000,000	1,300,000	green	1.20.126.002/0000
1 NC	THT LED	1,000,000	1,300,000	red	1.20.126.001/0000
2 NO	THT LED	1,000,000	1,300,000	green	1.20.126.005/0000
2 NC	THT LED	1,000,000	1,300,000	red	1.20.126.004/0000
1 NC + 1 NO	THT LED	1,000,000	1,300,000	red and green	1.20.126.003/0000

Caution: can not be used with emergency stop and mushroom headed pushbuttons.

RAFIX FS Contact block PCB gold, E-Stop, with light conductor

Technical data see page 2 - 241



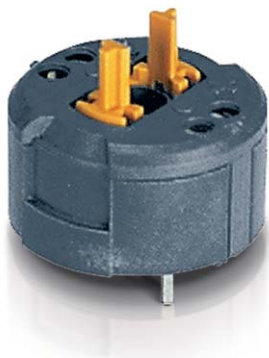
→ Contact arrangement	Lamp optional	Operating life at 10 mA / 24 V DC	B10	Color of plunger	Order no.
1 NO	SMT LED	1,000,000	1,300,000	green	1.20.126.402/9000
1 NC	SMT LED	1,000,000	1,300,000	red	1.20.126.401/9000
2 NO	SMT LED	1,000,000	1,300,000	green	1.20.126.405/9000
2 NC	SMT LED	1,000,000	1,300,000	red	1.20.126.404/9000
1 NC + 1 NO	SMT LED	1,000,000	1,300,000	yellow	1.20.126.403/9000

CONTROL COMPONENTS

RAFIX FS - CONTACT BLOCKS PCB GOLD

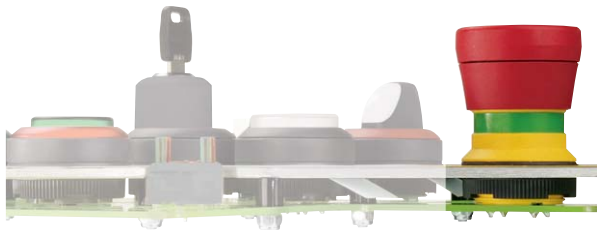
– Table (continued) –
RAFIX FS - Contact block PCB gold, E-Stop, with light conductor

Caution: E-stop contact blocks can only be used with emergency stop and mushroom headed pushbuttons.



RAFIX FS Contact block PCB gold, E-Stop

Technical data see page 2 - 241



→ Contact arrangement	Lamp optional	Operating life at 10 mA / 24 V DC	B10	Color of plunger	Order no.
1 NO	THT LED	1,000,000	1,300,000	green	1.20.126.402/0000
1 NC	THT LED	1,000,000	1,300,000	red	1.20.126.401/0000
2 NO	THT LED	1,000,000	1,300,000	green	1.20.126.405/0000
2 NC	THT LED	1,000,000	1,300,000	red	1.20.126.404/0000
1 NC + 1 NO	THT LED	1,000,000	1,300,000	yellow	1.20.126.403/0000

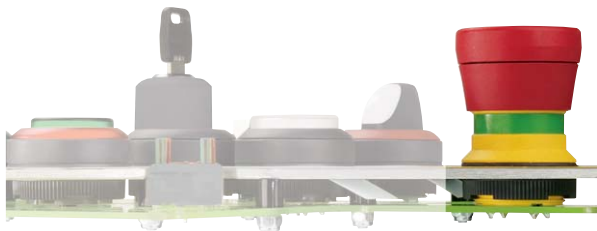
Caution: E-stop contact blocks can only be used with emergency stop and mushroom headed pushbuttons.

Contact
blocks



RAFIX FS Contact block PCB gold, E-Stop, „Plus 1“

Technical data see page 2 - 241



→ Contact arrangement	Lamp	Operating life at 10 mA / 24 V DC	B10	Color of plunger	Order no.
2 NC + 1 signal contact	-	50,000	65,000	red	1.20.126.414/0000

DISTRIBUTED BY TEXIM EUROPE

– Table (continued) –

RAFIX FS - Contact block PCB gold, E-Stop, „Plus 1“

Caution: E-stop contact blocks „Plus 1“ can only be used with emergency stop pushbuttons „Plus 1“.

The Netherlands



Elektrostraat 17
NL-7483 PG Haaksbergen

T: +31 (0)53 573 33 33
F: +31 (0)53 573 33 30
E: nl@texim-europe.com

Belgium



Zuiderlaan 14 bus 10
B-1731 Zellik

T: +32 (0)2 462 01 00
F: +32 (0)2 462 01 25
E: belgium@texim-europe.com

UK & Ireland



St. Mary's House, Church Lane
Carlton Le Moorland
Lincoln LN5 9HS

T: +44 (0)1522 789 555
F: +44 (0)845 299 22 26
E: uk@texim-europe.com

Germany North



Bahnhofstrasse 92
D-25451 Quickborn

T: +49 (0)4106 627 07-0
F: +49 (0)4106 627 07-20
E: germany@texim-europe.com

Germany South



Martin-Kollar-Strasse 9
D-81829 München

T: +49 (0)89 436 086-0
F: +49 (0)89 436 086-19
E: germany@texim-europe.com

Austria



Warwitzstrasse 9
A-5020 Salzburg

T: +43 (0)662 216 026
F: +43 (0)662 216 026-66
E: austria@texim-europe.com

Nordic region



Sdr. Jagtvej 12
DK-2970 Hørsholm

T: +45 88 20 26 30
F: +45 88 20 26 39
E: nordic@texim-europe.com

Italy



Via Matteotti 43
IT-20864 Agrate Brianza (MB)

T: +39 (0)395 967 226
F: +39 (0)395 967 226
E: italy@texim-europe.com

General information



info@texim-europe.com
www.texim-europe.com