

## FEATURES

- ▶ Industrial Standard 2" X 1" Package
- ▶ Wide 2:1 Input Voltage Range
- ▶ Fully Regulated Output Voltage
- ▶ I/O Isolation 4200VAC with Reinforced Insulation, rated for 300Vrms Working Voltage
- ▶ Low Leakage Current < 5μA
- ▶ Operating Ambient Temp. Range -40°C to +80°C
- ▶ No Min. Load Requirement
- ▶ Under-voltage, Overload/Voltage and Short Circuit Protection
- ▶ EMI Emission EN 55011 Class A & FCC Level A Approved
- ▶ Medical EMC Standard with 4<sup>th</sup> Edition of EMI EN 55011 and EMS EN 60601-1-2 Approved
- ▶ Medical Safety with 2xMOPP per 3<sup>rd</sup> Edition of IEC/EN 60601-1 & ANSI/AAMI ES60601-1 Approved with CE Marking



## PRODUCT OVERVIEW

The MINMAX MKW20M series is a new range of high performance 20W medical approved DC-DC converter within encapsulated 2"x1" package which specifically design for medical applications. There are 21 models available for input voltage of 12, 24, 48VDC with wide 2:1 input range and tight output voltage. The I/O isolation is specified for 4200VAC with reinforced insulation, which rated for 300Vrms working voltage. Further features include under-voltage, overload, short circuit protection, no min. load requirement, EMI emission EN 55011 class A approved, low leakage current 5μA max. and operating ambient temp. range by -40°C to 80°C by high efficiency up to 90%. MKW20M series conform to 4<sup>th</sup> edition medical EMC standard, medical safety with 2xMOPP (Means Of Patient Protection) per 3<sup>rd</sup> edition of IEC/EN 60601-1 & ANSI/AAMI ES60601-1 approved.

The MKW20M series offer a superior solution for demanding application in medical instrument requesting a certified supplementary and reinforced insulation system to comply with latest medical safety approval for 2xMOPP requirement.

### Model Selection Guide

Model Number	Input Voltage (Range)	Output Voltage	Output Current	Input Current		Reflected Ripple Current	Over Voltage Protection	Max. capacitive Load	Efficiency (typ.)
			Max.	@Max. Load	@No Load				@Max. Load
	VDC	VDC	mA	mA(typ.)	mA (typ.)	mA(typ.)	VDC	μF	%
MKW20-12S05M	12 (9 ~ 18)	5	4000	1938	20	100	6.2	6800	86
MKW20-12S051M		5.1	4000	1977			6.2		86
MKW20-12S12M		12	1670	1876			15	1160	89
MKW20-12S15M		15	1333	1893			18	750	88
MKW20-12S24M		24	840	1888			27	295	89
MKW20-12D12M		±12	±840	1888			±15	590#	89
MKW20-12D15M		±15	±670	1882			±18	380#	89
MKW20-24S05M	24 (18 ~ 36)	5	4000	947	15	50	6.2	6800	88
MKW20-24S051M		5.1	4000	966			6.2		88
MKW20-24S12M		12	1670	938			15	1160	89
MKW20-24S15M		15	1333	936			18	750	89
MKW20-24S24M		24	840	933			27	295	90
MKW20-24D12M		±12	±840	933			±15	590#	90
MKW20-24D15M		±15	±670	931			±18	380#	90
MKW20-48S05M	48 (36 ~ 75)	5	4000	473	10	30	6.2	6800	88
MKW20-48S051M		5.1	4000	483			6.2		88
MKW20-48S12M		12	1670	469			15	1160	89
MKW20-48S15M		15	1333	463			18	750	90
MKW20-48S24M		24	840	472			27	295	89
MKW20-48D12M		±12	±840	472			±15	590#	89
MKW20-48D15M		±15	±670	465			±18	380#	90

# For each output

**Input Specifications**

Parameter	Conditions/Model	Min.	Typ.	Max.	Unit
Input Surge Voltage (100 ms max.)	12V Input Models	-0.7	---	25	VDC
	24V Input Models	-0.7	---	50	
	48V Input Models	-0.7	---	100	
Start-Up Threshold Voltage	12V Input Models	---	---	9	
	24V Input Models	---	---	18	
	48V Input Models	---	---	36	
Under Voltage Shutdown	12V Input Models	---	7.5	---	
	24V Input Models	---	15	---	
	48V Input Models	---	33	---	
Start Up Time (Power On)	Nominal Vin and Constant Resistive Load	---	---	30	ms
Input Filter	All Models	Internal Pi Type			

**Output Specifications**

Parameter	Conditions/Model		Min.	Typ.	Max.	Unit	
Output Voltage Setting Accuracy			---	---	±1.0	%Vnom.	
Output Voltage Balance	Dual Output, Balanced Loads		---	---	±2.0	%	
Line Regulation	Vin=Min. to Max. @Full Load		---	---	±0.5	%	
Load Regulation	Io=0% to 100%	Single Output	---	---	±0.5	%	
		Dual Output	---	---	±1.0	%	
Minimum Load	No minimum Load Requirement						
Ripple & Noise	0-20 MHz Bandwidth	5V & 5.1Vo	Measured with a MLCC : 4.7µF	---	50	---	mV P-P
		12V,15V, ±12V, ±15Vo		---	100	---	mV P-P
		24Vo		---	150	---	mV P-P
Transient Recovery Time	25% Load Step Change(2)		---	---	300	µsec	
Transient Response Deviation			---	±3	±5	%	
Temperature Coefficient			---	---	±0.02	%/°C	
Over Load Protection	Hiccup		---	150	---	%	
Short Circuit Protection	Continuous, Automatic Recovery (Hiccup Mode 0.7Hz typ.)						

**Isolation, Safety Standards**

Parameter	Conditions	Min.	Typ.	Max.	Unit
I/O Isolation Voltage	60 Seconds Reinforced insulation, rated for 300Vrms working voltage	4200	---	---	VACrms
Leakage Current	240VAC, 60Hz	---	---	5	μA
I/O Isolation Resistance	500 VDC	10	---	---	GΩ
I/O Isolation Capacitance	100kHz, 1V	---	---	80	pF
Safety Standards	ANSI/AAMI ES 60601-1, CAN/CSA-C22.2 No. 60601-1 IEC/EN 60601-1 3rd Edition 2xMOPP				
Safety Approvals	ANSI/AAMI ES 60601-1 2xMOPP recognition (UL certificate), IEC/EN 60601-1 3rd Edition (CB-report)				

**General Specifications**

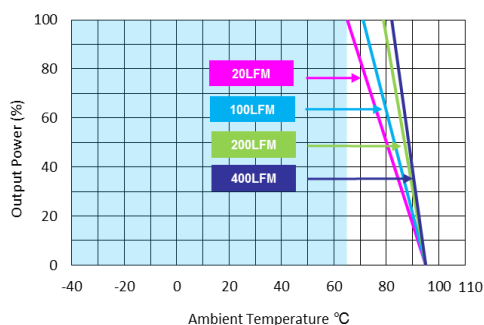
Parameter	Conditions	Min.	Typ.	Max.	Unit
Switching Frequency		---	285	---	kHz
MTBF(calculated)	MIL-HDBK-217F@25°C, Ground Benign	1,087,344	---	---	Hours

**Environmental Specifications**

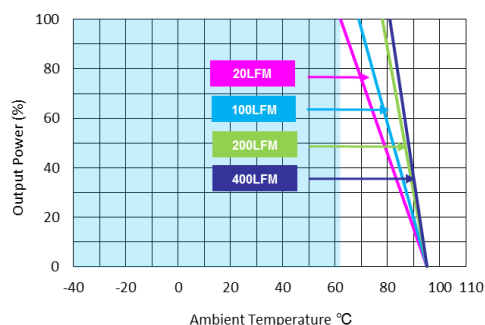
Parameter	Conditions/Model	Min.	Max.	Unit
Operating Ambient Temperature Range Nominal Vin, Load 100% Inom. (for Power Derating see relative Derating Curves)	MKW20-24S24M, MKW20-24D12M, MKW20-24D15M MKW20-48S15M, MKW20-48D15M	-40	66	°C
	MKW20-12S12M, MKW20-12S24M, MKW20-12D12M MKW20-12D15M, MKW20-24S12M, MKW20-24S15M MKW20-48S12M, MKW20-48S24M, MKW20-48D12M		62	
	MKW20-12S15M, MKW20-24S05M, MKW20-24S051M MKW20-48S05M, MKW20-48S051M		58	
	MKW20-12S05M, MKW20-12S051M		51	
Thermal Impedance		13.0	---	°C/W
Case Temperature		---	+95	°C
Storage Temperature Range		-50	+125	°C
Humidity (non condensing)		---	95	% rel. H
Altitude		---	4000	M
Lead Temperature (1.5mm from case for 10Sec.)		---	260	°C

**EMC Specifications**

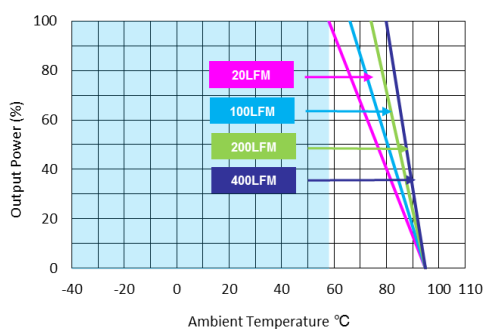
Parameter	Standards & Level		Performance
EMI	Conduction & Radiation	EN 55011, FCC part 15	Class A
EMS	EN 60601-1-2 4 <sup>th</sup>		
	ESD	EN 61000-4-2 Air ± 15kV, Contact ± 8kV	A
	Radiated immunity	EN 61000-4-3 10V/m	A
	Fast transient (s)	EN 61000-4-4 ±2kV	A
	Surge (s)	EN 61000-4-5 ±1kV	A
	Conducted immunity	EN 61000-4-6 10Vrms	A
	PFMF	EN 61000-4-8 100A/M	A

**Power Derating Curve**


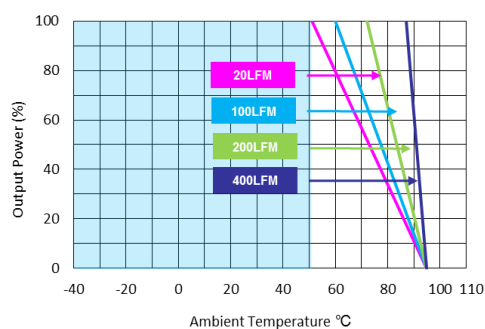
MKW20-24S24M, MKW20-24D12M, MKW20-24D15M  
MKW20-48S15M, MKW20-48D15M



MKW20-12S12M, MKW20-12S24M, MKW20-12D12M  
MKW20-12D15M, MKW20-24S12M, MKW20-24S15M  
MKW20-48S12M, MKW20-48S24M, MKW20-48D12M



MKW20-12S15M, MKW20-24S05M, MKW20-24S051M  
MKW20-48S05M, MKW20-48S051M



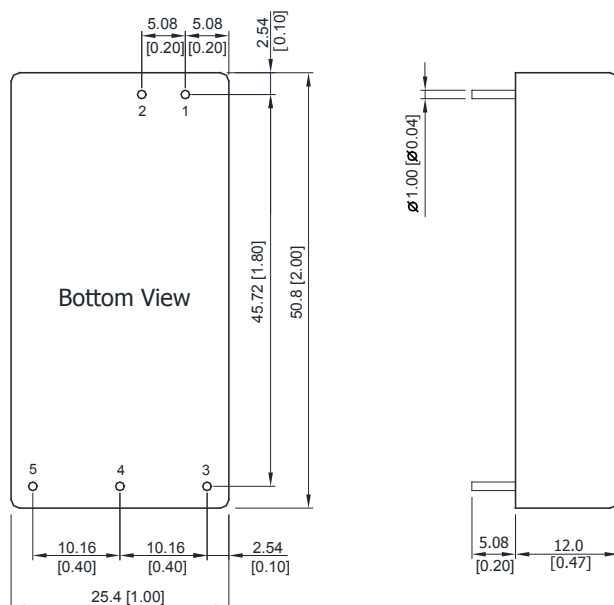
MKW20-12S05M, MKW20-12S051M

**Notes**

- 1 Specifications typical at  $T_a = +25^\circ\text{C}$ , resistive load, nominal input voltage and rated output current unless otherwise noted.
- 2 Transient recovery time is measured to within 1% error band for a step change in output load of 75% to 100%.
- 3 We recommend to protect the converter by a slow blow fuse in the input supply line.
- 4 Other input and output voltage may be available, please contact factory.
- 5 To meet EN 61000-4-4 & EN 61000-4-5 an external capacitor across the input pins is required.  
Suggested capacitor: 12XXX & 24XXX: CHEMI-CON KY Series 560 $\mu\text{F}$ /50V // Diode: V15P8-M3  
48XXX: CHEMI-CON KY Series 560 $\mu\text{F}$ /100V // Diode: V15P10
- 6 Specifications are subject to change without notice.

## Package Specifications

## Mechanical Dimensions



### Pin Connections

Pin	Single Output	Dual Output
1	+Vin	+Vin
2	-Vin	-Vin
3	+Vout	+Vout
4	No Pin	Common
5	-Vout	-Vout

- ▶ All dimensions in mm (inches)
- ▶ Tolerance: X.X±0.5 (X.XX±0.02)  
X.XX±0.25 (X.XXX±0.01)
- ▶ Pin diameter  $\varnothing$  1.0 ±0.05 (0.04±0.002)

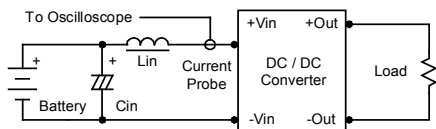
## Physical Characteristics

Case Size	: 50.8x25.4x12.0mm (2.0x1.0x0.47 inches)
Case Material	: Non-Conductive Black Plastic (flammability to UL 94V-0 rated)
Pin Material	: Tinned Copper
Weight	: 30g

## Test Setup

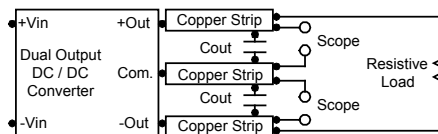
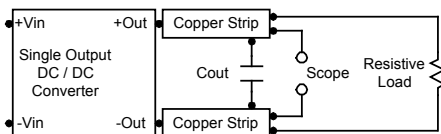
### Input Reflected-Ripple Current Test Setup

Input reflected-ripple current is measured with an inductor  $L_{in}$  (4.7 $\mu$ H) and  $C_{in}$  (220 $\mu$ F, ESR < 1.0 $\Omega$  at 100 kHz) to simulate source impedance. Capacitor  $C_{in}$  offsets possible battery impedance. Current ripple is measured at the input terminals of the module, measurement bandwidth is 0-500 kHz.



### Peak-to-Peak Output Noise Measurement Test

Use a  $C_{out}$  4.7 $\mu$ F ceramic capacitor. Scope measurement should be made by using a BNC socket, measurement bandwidth is 0-20 MHz. Position the load between 50 mm and 75 mm from the DC-DC Converter.



## Technical Notes

### Overload Protection

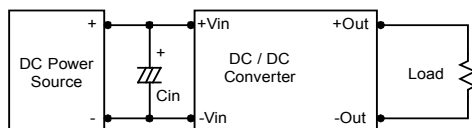
To provide hiccup mode protection in a fault (output overload) condition, the unit is equipped with internal current limiting circuitry and can endure overload for an unlimited duration.

### Overvoltage Protection

The output overvoltage clamp consists of control circuitry, which is independent of the primary regulation loop, that monitors the voltage on the output terminals. The control loop of the clamp has a higher voltage set point than the primary loop. This provides a redundant voltage control that reduces the risk of output overvoltage. The OVP level can be found in the output data.

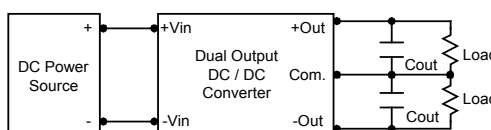
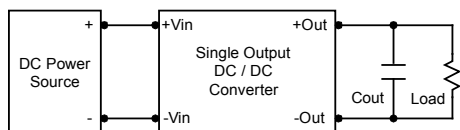
### Input Source Impedance

The power module should be connected to a low ac-impedance input source. Highly inductive source impedances can affect the stability of the power module. In applications where power is supplied over long lines and output loading is high, it may be necessary to use a capacitor on the input to insure startup. By using a good quality low Equivalent Series Resistance (ESR < 1.0 $\Omega$  at 100 kHz) capacitor of a 10 $\mu$ F for the 12V input devices and a 4.7 $\mu$ F for the 24V input devices and a 2.2 $\mu$ F for the 48V devices, capacitor mounted close to the power module helps ensure stability of the unit.



### Output Ripple Reduction

A good quality low ESR capacitor placed as close as practicable across the load will give the best ripple and noise performance. To reduce output ripple, it is recommended to use 4.7 $\mu$ F capacitors at the output.

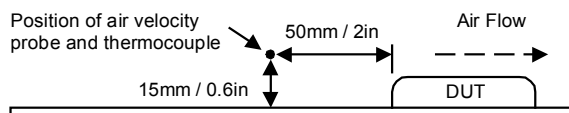


### Maximum Capacitive Load

The MKW20M series has limitation of maximum connected capacitance on the output. The power module may operate in current limiting mode during start-up, affecting the ramp-up and the startup time. Connect capacitors at the point of load for best performance. The maximum capacitance can be found in the data sheet.

### Thermal Considerations

Many conditions affect the thermal performance of the power module, such as orientation, airflow over the module and board spacing. To avoid exceeding the maximum temperature rating of the components inside the power module, the case temperature must be kept below 95°C. The derating curves are determined from measurements obtained in a test setup.



## The Netherlands



Elektrostraat 17  
NL-7483 PG Haaksbergen

T: +31 (0)53 573 33 33  
F: +31 (0)53 573 33 30  
E: [nl@texim-europe.com](mailto:nl@texim-europe.com)

## Belgium



Zuiderlaan 14 bus 10  
B-1731 Zellik

T: +32 (0)2 462 01 00  
F: +32 (0)2 462 01 25  
E: [belgium@texim-europe.com](mailto:belgium@texim-europe.com)

## UK & Ireland



St. Mary's House, Church Lane  
Carlton Le Moorland  
Lincoln LN5 9HS

T: +44 (0)1522 789 555  
F: +44 (0)845 299 22 26  
E: [uk@texim-europe.com](mailto:uk@texim-europe.com)

## Germany North



Bahnhofstrasse 92  
D-25451 Quickborn

T: +49 (0)4106 627 07-0  
F: +49 (0)4106 627 07-20  
E: [germany@texim-europe.com](mailto:germany@texim-europe.com)

## Germany South



Martin-Kollar-Strasse 9  
D-81829 München

T: +49 (0)89 436 086-0  
F: +49 (0)89 436 086-19  
E: [germany@texim-europe.com](mailto:germany@texim-europe.com)

## Austria



Warwitzstrasse 9  
A-5020 Salzburg

T: +43 (0)662 216 026  
F: +43 (0)662 216 026-66  
E: [austria@texim-europe.com](mailto:austria@texim-europe.com)

## Nordic region



Sdr. Jagtvej 12  
DK-2970 Hørsholm

T: +45 88 20 26 30  
F: +45 88 20 26 39  
E: [nordic@texim-europe.com](mailto:nordic@texim-europe.com)

## Italy



Via Matteotti 43  
IT-20864 Agrate Brianza (MB)

T: +39 (0)39 971 3293  
F: +39 (0)39 971 3293  
E: [italy@texim-europe.com](mailto:italy@texim-europe.com)

## General information



[info@texim-europe.com](mailto:info@texim-europe.com)  
[www.texim-europe.com](http://www.texim-europe.com)