



Features

- Low power ARM Cortex M3 100MHz SoC
- 512KB Flash and 32KB SRAM
- 1 x 10/100Mbps Ethernet
- 2 x RS-232 / 422 / 485 ports
- C / C++ Programmable with FreeRTOS
- lwIP and BSD socket library for TCP/IP
- Toolchain: Sourcery CodeBench Lite
- Example code: device server and web console
- Windows utility for firmware upgrade and configuration

H/W Specifications

System

- CPU: NXP LPC1768 Cortex M3 100MHz

Serial Port

- Port 1: RS-232 / 422 / 485
- Port 2: RS-232 / 485
- Baud Rate: 1.2~921.6Kbps
- Flow Control: None / Hardware / XON_XOFF
- Data Bits: 5, 6, 7, 8
- Stop Bits: 1, 2
- Protection: 15KV ESD

Network Interface

- Type: 1 x 10/100BaseT, RJ45 connector
- Protection: 1.5KV magnetic isolation

Serial Console Port

- RS-232: 115.2Kbps baud rate, no flow control, 8 bits data, 1 stop bit

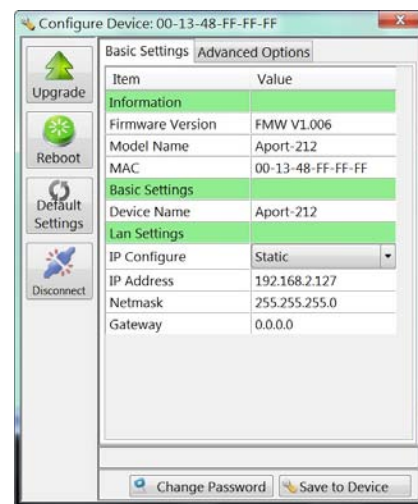
Mechanical & Environmental

- Power: 9~40VDC power jack and terminal block
- Dimensions (W x H x D): 78 x 108 x 25mm
- Operating Temperature: 0~70°C
- Storage Temperature: -20~85°C

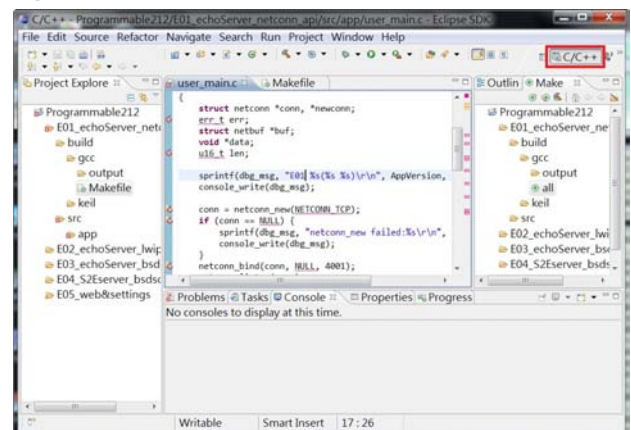
Ordering Information

- **Aport-212PG**
Programmable Device Server
- **91-RJCON-100**
Console Cable (RJ45 to DB9 Female, 100cm)
- **DK-35A**
DIN RAIL Mounting Kit
- **PWR-12V-1A**
110~240VAC to 12VDC 1A Power Adapter

Windows Utility Software



Example Program



Distributed by:



www.texim-europe.com