

CH03-BE - SIM CARD HOLDER WITH SWITCH 6 OR 8 PINS

FEATURES

1. GENERAL CHARACTERISTICS

DIMENSIONS: 29.65L x 17.20W x 3.00H mm
 WEIGHT: APPROX. 1.43g
 CONTACT PRINCIPLE: FRICTION TECHNOLOGY
 OPERATING POSITION: SHAFT UP / DOWN / HORIZONTAL
 MOUNTING SYSTEM: SMT TYPE (post optional)
 DURABILITY: 10,000 CYCLES MIN.

2. MECHANICAL CHARACTERISTICS

INSULATION MATERIAL: THERMOPLASTIC, UL 94V-0
 PLATING: GOLD FLASH ON CONTACT AREA/TIN ON SOLDER TAIL

3. ELECTRICAL CHARACTERISTICS

CONTACT RESISTANCE: 50m OHMS TYP. 100m OHMS MAX.
 INSULATION RESISTANCE: > 1000M OHMS / 500V DC
 SWITCH TYPE: BLADE (Normally Open)
 RATED CURRENT: 1A MAX.
 RAGED VOLTAGE: 50V MAX.
 WITHSTANDING DIELECTRIC VOLTAGE: 500V AC R.M.S. FOR 1 MINUTE

4. SOLDERABILITY

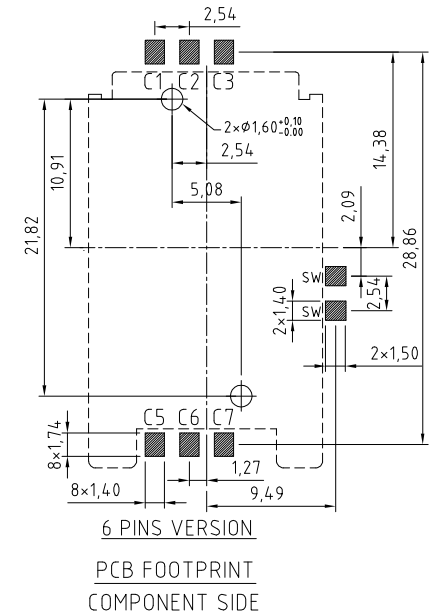
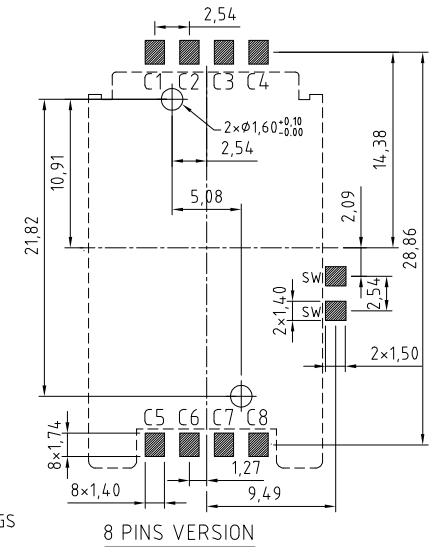
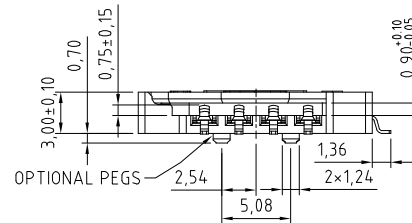
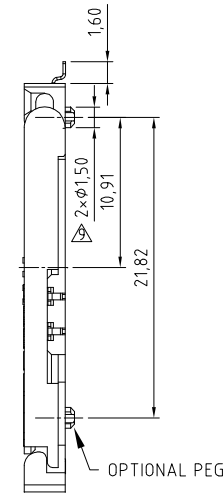
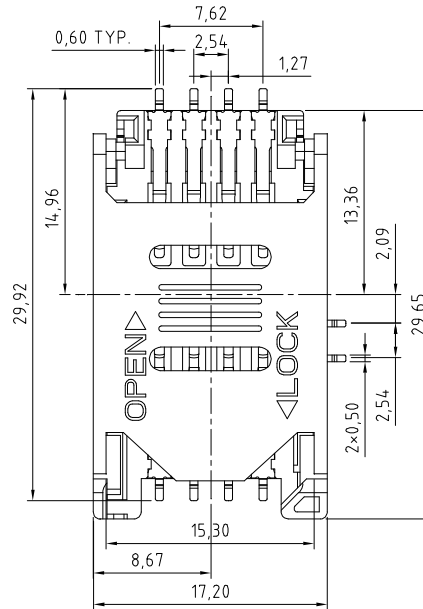
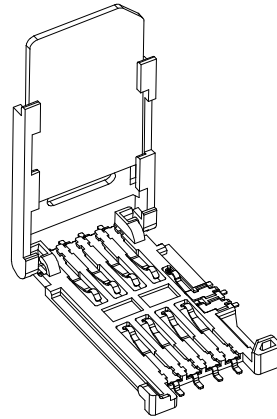
WAVE: NOT APPLICABLE
 IR REFLOW: 260°C, 10 SEC. MAX.
 MANUAL SOLDERING: 360°C, 3 SEC. MAX.

5. ENVIRONMENTAL CHARACTERISTICS

OPERATING TEMPERATURE: -40°C ~ +85°C
 OPERATING HUMIDITY: 10% ~ 95% RH
 STORAGE TEMPERATURE: -40°C ~ +85°C
 STORAGE HUMIDITY: 10% ~ 95% RH

NOTES:

1. ACCEPTABLE SIM CARD SIZE SHOULD MEET GSM 11.11 SPECIFICATION REQUIREMENT.



HOW TO ORDER

CH03 - BEXX0 - OXR

NO. OF CONTACTS
06 OR 08

WITH OR WITHOUT
LOCATING PEG
A = WITH
B = WITHOUT

PACKAGING OPTIONS
R = REEL
(600PCS/REEL)

Distributed by:

www.texim-europe.com

10	14/09/04-NYW RELEASE
11	01/02/05-GR
12	AMEND FEATURES
13	24/04/07 - NYW
14	ADD NOTE 1.
15	28/09/07 - NYW
16	REMOVE PACK OPTION TRAY
17	ADD SEPARATE PCB LAYOUT
18	ADD ELECTRICAL SPEC.
19	04/06/08 - NYW
20	ADD ELECTRICAL SPEC.
21	04/06/08 - NYW
22	ADD ELECTRICAL SPEC.
23	PACKAGING DRAWING ADDED
24	07/07/08 - NYW
25	DRAWING MODIFICATION
26	12/07/08 - NYW
27	INSULATOR BASE CHANGE
28	PLATING CHANGE
29	28/06/12 - NYW
30	DRAWING AMENDMENT

Scale: 2:1	THIRD ANGLE	Unstated Tolerances: 0 Dec Places 1 Dec Places 2 Dec Places 3 Dec Places	Material SEE NOTE
Drawn: NYW			
App'd: XXXX	Title SIM CARD ACCEPTOR		NOT TO SCALE
Date: 28 JUN '12	Revision: 1.9		Unit: mm

www.gradconn.com

THIS DRAWING IS CONFIDENTIAL AND MUST NOT BE COPIED OR DISCLOSED WITHOUT WRITTEN CONSENT

Type: CH03-BE
CH03-BE
Drawing Number:
Sheet 1 of 2
Drawing © E and O E

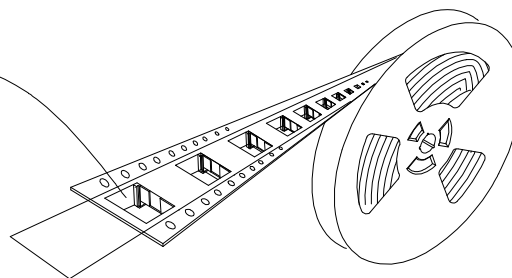
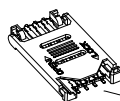
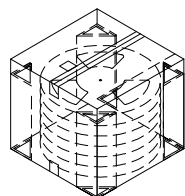
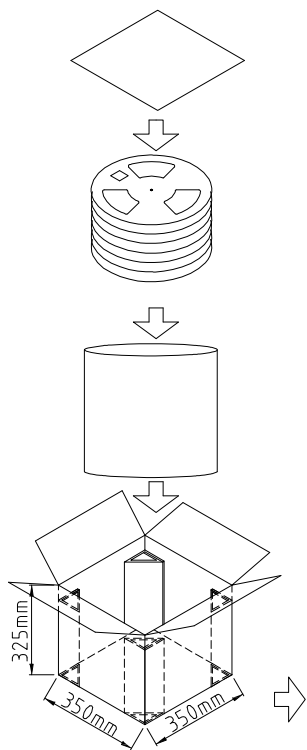
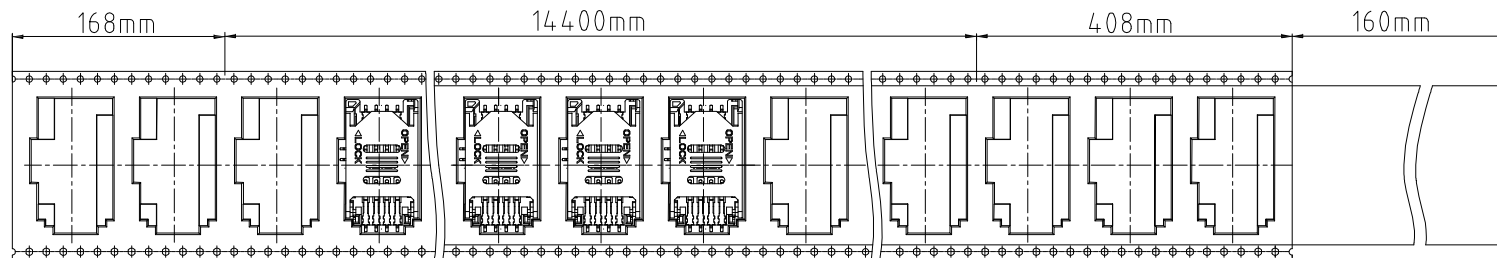
CH03-BE - SIM CARD HOLDER WITH SWITCH 6 OR 8 PINS - PACKAGING DRAWING

REELING DIRECTION

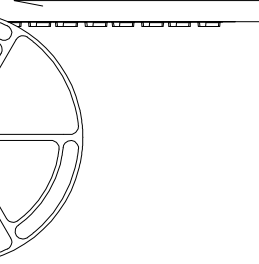


REEL CENTER WITH 7 EMPTY CARRIER

WITH 17 EMPTY CARRIER AT FRONT END



REELING DIRECTION



NOTES:

- 1. REEL DIA.: 33CM.
- 2. 600PCS PER REEL, GROSS WEIGHT: 1.39KG.
- 3. 6 REELS PER FULL CARTON, GROSS WEIGHT: 9.54KG.

Distributed by:

www.texim-europe.com

REV. DATE & BRN 10 28/04/09 - PN PACKAGING DRAWING ADDED 11 22/12/11 - NYW CONNECTOR APPENDMENT.		Scale: NTS Drawn: PN App'd: XXXX Date: 22 DEC '11	THIRD ANGLE Unstated Tolerances: 0 Dec Places 1 Dec Places 2 Dec Places 3 Dec Places	Material SEE NOTE NOT TO SCALE Unit: mm
--	--	--	---	--

Title SIM CARD ACCEPTOR Revision: 1.1	www.gradconn.com
--	------------------

Type: CH03-BE CH03-BE Drawing Number: Sheet 2 of 2 Drawing © E and O E
--

THIS DRAWING IS CONFIDENTIAL AND MUST NOT BE COPIED OR DISCLOSED WITHOUT WRITTEN CONSENT

TEXIM EUROPE

Partner in Electronic Components & Supply Chain Solutions



The Netherlands

Elektrostraat 17
NL-7483 PG Haaksbergen
Tel: +31 (0)53 573 33 33
Fax: +31 (0)53 573 33 30
nl@texim-europe.com



Belgium

Gentsesteenweg 1154-C22
Chaussée de Gand 1154-C22
B-1082 Brussel / Bruxelles
Tel: +32 (0)2 462 01 00
Fax: +32 (0)2 462 01 25
belgium@texim-europe.com



Denmark

Sdr. Jagtvej 12
DK-2970 Hørsholm
Tel: +45 88 20 26 30
Fax: +45 88 20 26 39
nordic@texim-europe.com



Germany

Bahnhofstrasse 92
D-25451 Quickborn
Tel: +49 (0)4106 627 07-0
Fax: +49 (0)4106 627 07-20
germany@texim-europe.com



Germany

Martin-Kollar-Strasse 9
D-81829 München
Tel: +49 (0)89 436 086-0
Fax: +49 (0)89 436 086-19
germany@texim-europe.com



Austria

Warwitzstrasse 9
A-5020 Salzburg
Tel: +43 (0)662 216026
Fax: +43 (0)662 216026-66
austria@texim-europe.com



United Kingdom

St. Mary's House, Church Lane
Carlton Le Moorland
Lincoln LN5 9HS
Tel: +44 (0)1522 789 555
Fax: +44 (0)845 299 22 26
uk@texim-europe.com

For more information: www.texim-europe.com

