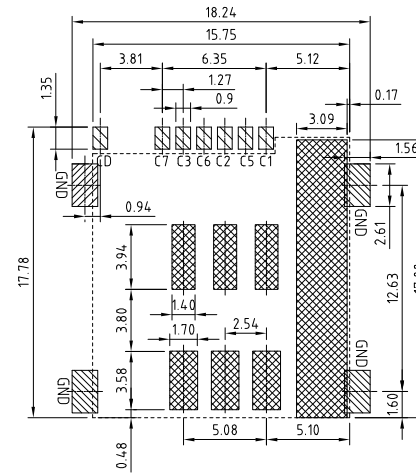
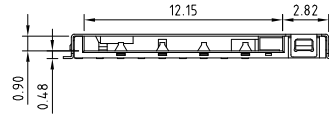
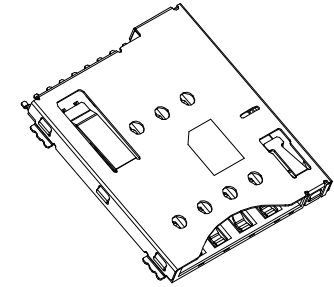
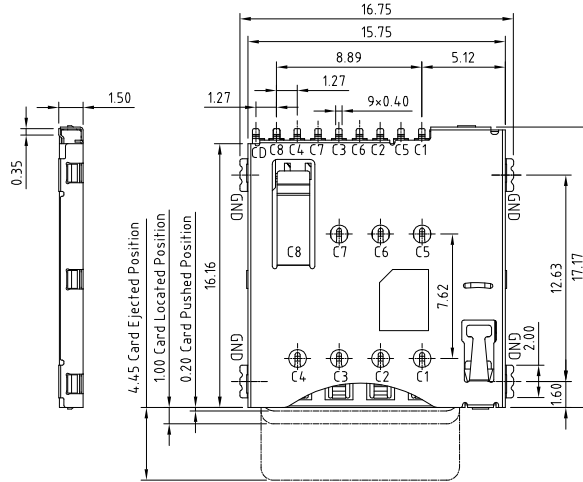


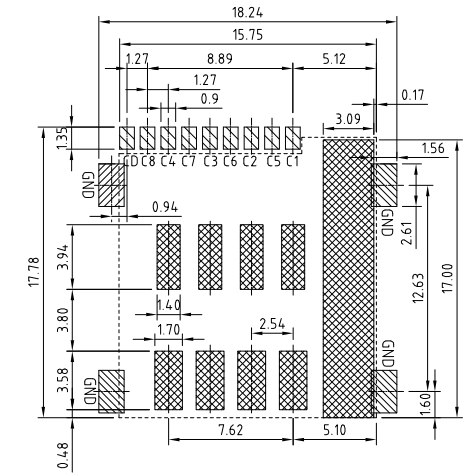
CH03-GB - 3FF MICRO SIM CARD CONNECTOR SMT, PUSH PUSH TYPE, WITH SWITCH, 6 OR 8 CONTACTS

FEATURES

- GENERAL CHARACTERISTICS**  
 DIMENSIONS: 15.75L x 17.17W x 1.50H mm  
 WEIGHT: APPROX. 0.4g  
 CONTACT PRINCIPLE: FRICTION TECHNOLOGY  
 DURABILITY: 1,500 CYCLES MIN.
- MECHANICAL CHARACTERISTICS**  
 INSULATION MATERIAL: THERMOPLASTIC, UL 94V-0  
 CONTACT MATERIAL: PHOSPHOR BRONZE, GOLD PLATED  
 CD SWITCH: PHOSPHOR BRONZE, GOLD PLATED  
 SHELL MATERIAL: STAINLESS STEEL, GOLD PLATED ON SMT AREA  
 SWITCH TYPE: BLADE, NORMALLY CLOSE
- ELECTRICAL CHARACTERISTICS**  
 NUMBER OF CONTACTS: 6, 8 PINS (OPTIONAL)  
 CONTACT RESISTANCE (CONTACTS): 50m OHMS TYP. 100m OHMS MAX.  
 CONTACT RESISTANCE (SWITCH): 300m OHMS MAX.  
 INSULATION RESISTANCE: >1000M OHMS / 500V DC  
 DIELECTRIC WITHSTANDING VOLTAGE: 500V AC RMS, 1 MINUTE  
 VOLTAGE RATING: 50V MAX.  
 CURRENT RATING: 1A MAX., 10uA MIN.
- SOLDERABILITY**  
 WAVE: NOT APPLICABLE  
 IR REFLOW: 250°C, 5 SEC. MAX.  
 MANUAL SOLDERING: 370°C, 3 SEC. MAX.
- ENVIRONMENTAL CHARACTERISTICS**  
 OPERATING TEMPERATURE: -40°C ~ +85°C  
 OPERATING HUMIDITY: 10% ~ 95% RH  
 STORAGE TEMPERATURE: -40°C ~ +85°C  
 STORAGE HUMIDITY: 10% ~ 95% RH

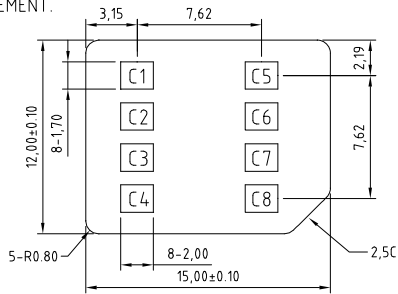


RECOMMENDED PCB LAYOUT (6 PINS)



RECOMMENDED PCB LAYOUT (8 PINS)

NOTES:  
1. ACCEPTABLE SIM CARD SIZE SHOULD MEET GSM 11.11 SPECIFICATION REQUIREMENT.

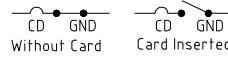


THICKNESS: 0.76 ± 0.08  
MICRO SIM CARD



Switch Operation Diagram

Electric Function	Defect Switch
Without Card	Closed
Card Inserted	Open



HOW TO ORDER

CH03 - GBXX0 - ABR

NO. OF CONTACTS  
06 OR 08

PACKAGING OPTIONS  
R = TAPE & REEL (1000PCS/REEL)

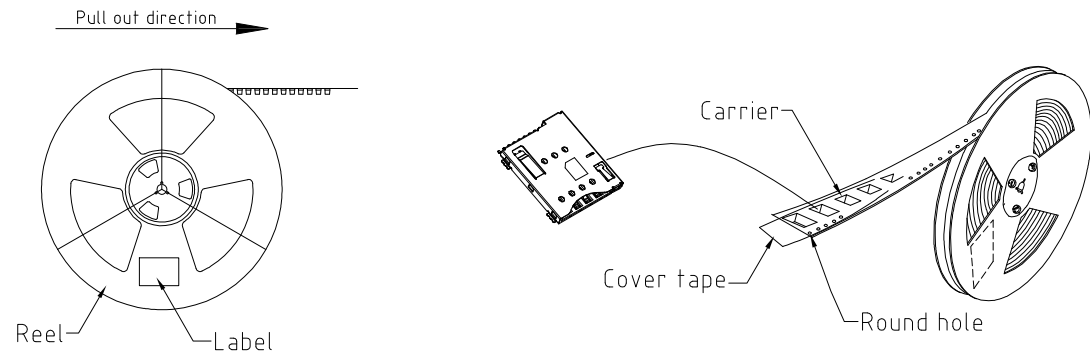
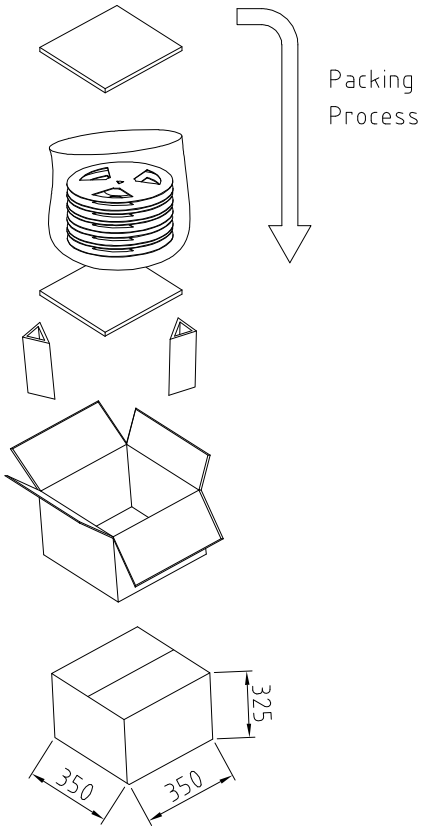
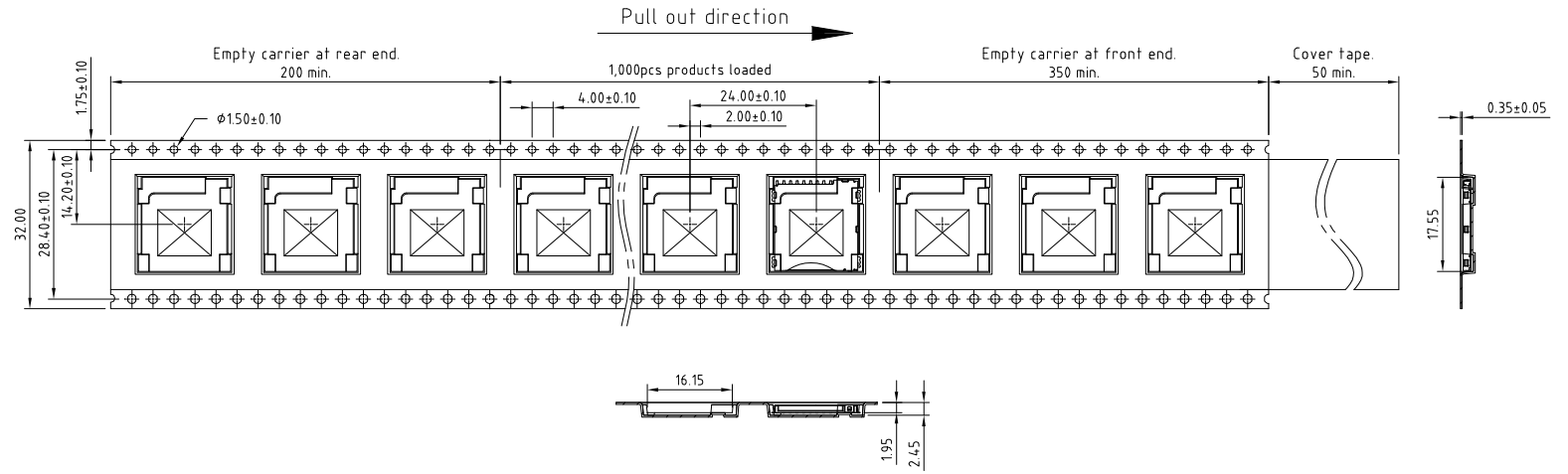
REV. DATE & DRN  
1.0 18/07/14 - NYW RELEASE

Scale: 3:1	THIRD ANGLE	Unstated Tolerances: XX ± 0.15	Material: SEE NOTE
Drawn: NYW			
App'd: XXXX	Title: SIM CARD ACCEPTOR		NOT TO SCALE
Date: 18 JUL '14	Revision: 1.0		Unit: mm

THIS DRAWING IS CONFIDENTIAL AND MUST NOT BE COPIED OR DISCLOSED WITHOUT WRITTEN CONSENT

Type: CH03-GB
CH03-GB
Drawing Number:
Sheet 1 of 1
Drawing © E and O E

CH03-GB - PACKAGING DRAWING



- NOTES:
1. REEL DIA.: 33CM.
  2. 1,000PCS PER REEL, GROSS WEIGHT: 0.85KG.
  3. 8 REELS PER FULL CARTON, GROSS WEIGHT: 7.7KG.

Distributed by:

www.texim-europe.com

REV. DATE & DRN  
1.0 05/08/14 - NYW RELEASE

	THIRD ANGLE	Unstated .X .XX .XXX X.°	Tolerances: ±0.15 ±0.10 ±0.05 ±1.5°	Material SEE NOTE
Drawn: NYW				
App'd: XXX	Title: PACKAGING			NOT TO SCALE
Date: 5 AUG. '14	Revision: 1.0			Unit: mm

www.gradconn.com

© THIS DRAWING IS CONFIDENTIAL AND MUST NOT BE COPIED OR DISCLOSED WITHOUT WRITTEN CONSENT

Type: CH03-GB
CH03-GB
Drawing Number:
Sheet 1 of 1
Drawing © E and O E

# TEXIM EUROPE

Partner in Electronic Components & Supply Chain Solutions



## The Netherlands

Elektrostraat 17  
NL-7483 PG Haaksbergen  
Tel: +31 (0)53 573 33 33  
Fax: +31 (0)53 573 33 30  
nl@texim-europe.com



## Belgium

Gentsesteenweg 1154-C22  
Chaussée de Gand 1154-C22  
B-1082 Brussel / Bruxelles  
Tel: +32 (0)2 462 01 00  
Fax: +32 (0)2 462 01 25  
belgium@texim-europe.com



## Denmark

Sdr. Jagtvej 12  
DK-2970 Hørsholm  
Tel: +45 88 20 26 30  
Fax: +45 88 20 26 39  
nordic@texim-europe.com



## Germany

Bahnhofstrasse 92  
D-25451 Quickborn  
Tel: +49 (0)4106 627 07-0  
Fax: +49 (0)4106 627 07-20  
germany@texim-europe.com



## Germany

Martin-Kollar-Strasse 9  
D-81829 München  
Tel: +49 (0)89 436 086-0  
Fax: +49 (0)89 436 086-19  
germany@texim-europe.com



## Austria

Warwitzstrasse 9  
A-5020 Salzburg  
Tel: +43 (0)662 216026  
Fax: +43 (0)662 216026-66  
austria@texim-europe.com



## United Kingdom

St. Mary's House, Church Lane  
Carlton Le Moorland  
Lincoln LN5 9HS  
Tel: +44 (0)1522 789 555  
Fax: +44 (0)845 299 22 26  
uk@texim-europe.com

For more information: [www.texim-europe.com](http://www.texim-europe.com)

