

CH03-KB - NANO SIM CARD CONNECTOR SMT, PUSH PULL TYPE, WITHOUT SWITCH, 6 CONTACTS

FEATURES

1. GENERAL CHARACTERISTICS

DIMENSIONS: 12.20x9.54x1.35H mm
 WEIGHT: APPROX. 0.53±0.2g
 CONTACT PRINCIPLE: FRICTION TECHNOLOGY
 MOUNTING SYSTEM: SMT TYPE (WITH PEG)
 DURABILITY: 1,500 CYCLES MIN.

2. MECHANICAL CHARACTERISTICS

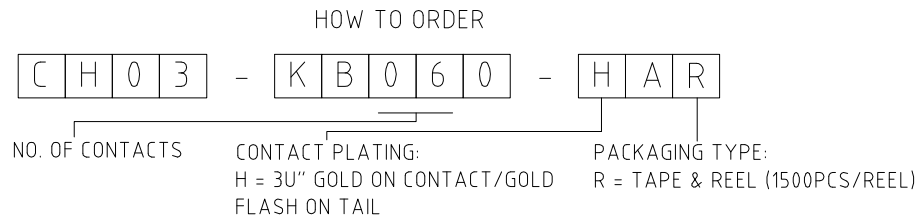
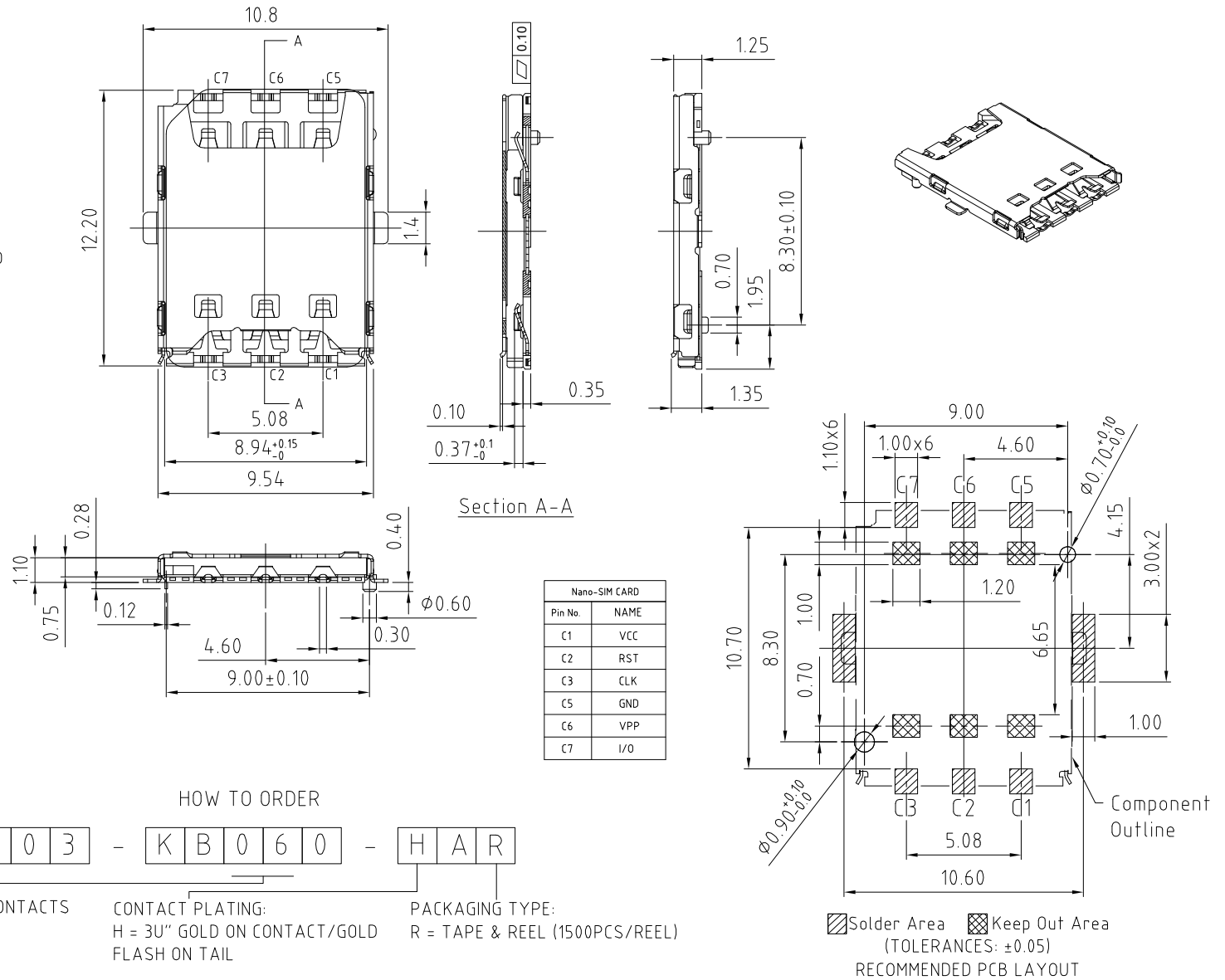
INSULATION MATERIAL: LCP+30% G/F, UL 94V-0
 CONTACT MATERIAL: PHOSPHOR BRONZE
 SHELL MATERIAL: STAINLESS STEEL (SUS301-H)
 CONTACT PLATING: 3U" GOLD OVER NICKEL ON CONTACT POINT, GOLD FLASH ON SOLDER TAIL.
 SHELL PLATING: NICKEL OVERALL.

3. ELECTRICAL CHARACTERISTICS

CURRENT RATING: 0.5A MAX.
 VOLTAGE RATING: 30V MAX.
 CONTACT RESISTANCE: 100m OHMS MAX.
 INSULATION RESISTANCE: >1000M OHMS
 DIELECTRIC WITHSTANDING VOLTAGE: 100V AC RMS, 1 MINUTE

NOTES:

1. ACCEPTABLE SIM CARD SIZE SHOULD MEET GSM 11.11 SPECIFICATION REQUIREMENT.



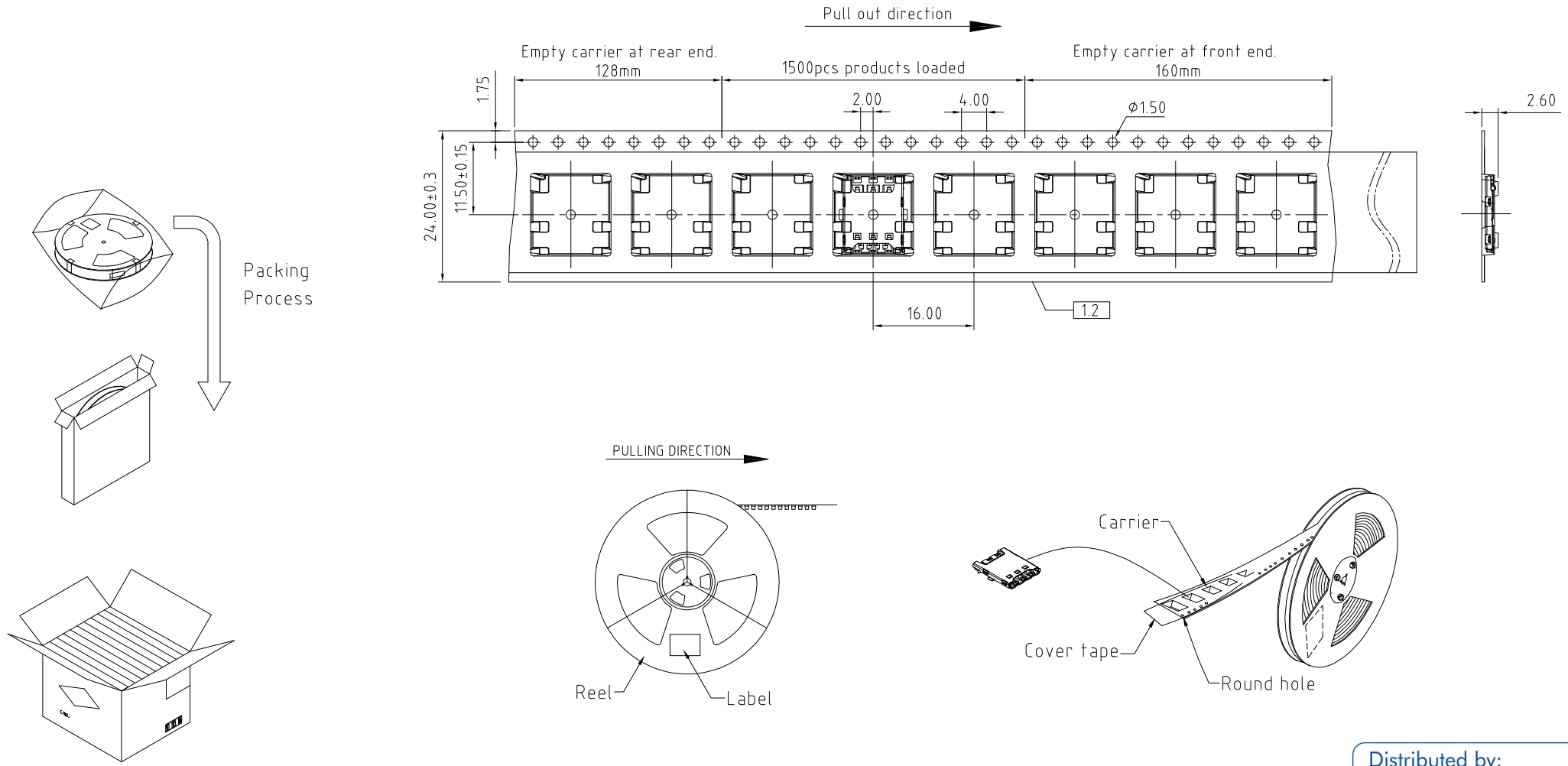
REV. DATE & DRN
1.0 10/02/15 - NYW RELEASE

Scale: 5:1	THIRD ANGLE	Unstated Tolerances: X ± 0.25 XX ± 0.15 XXX ± 0.10	Material SEE NOTE
Drawn: NYW			NOT TO SCALE
App'd: XXXX	Title: SIM CARD ACCEPTOR	Unit: mm	
Date: 10 FEB. '15	Revision: 1.0		

© THIS DRAWING IS CONFIDENTIAL AND MUST NOT BE COPIED OR DISCLOSED WITHOUT WRITTEN CONSENT

Type: CH03-KB
CH03-KB
Drawing Number:
Sheet 1 of 1
Drawing © E and O E

CH03-KB - PACKAGING DRAWING



- NOTES:
 1. REEL DIA.: 33CM.
 2. 1500PCS PER REEL.
 3. 10 REELS PER FULL CARTON.

Distributed by:

www.texim-europe.com

REV. DATE & DRN 1.0 04/03/15 - NYW RELEASE		THIRD ANGLE	Unstated Tolerances:	Material SEE NOTE	 www.gradconn.com	Type: CH03-KB
	Drawn: NYW			NOT TO SCALE		CH03-KB
	App'd: XXX	Title: PACKAGING		Unit: mm		Drawing Number:
	Date: 4 MAR '15	Revision: 1.0				Sheet 1 OF 1
					THIS DRAWING IS CONFIDENTIAL AND MUST NOT BE COPIED OR DISCLOSED WITHOUT WRITTEN CONSENT	Drawing E and O E

TEXIM EUROPE

Partner in Electronic Components & Supply Chain Solutions



The Netherlands

Elektrostraat 17
NL-7483 PG Haaksbergen
Tel: +31 (0)53 573 33 33
Fax: +31 (0)53 573 33 30
nl@texim-europe.com



Belgium

Gentsesteenweg 1154-C22
Chaussée de Gand 1154-C22
B-1082 Brussel / Bruxelles
Tel: +32 (0)2 462 01 00
Fax: +32 (0)2 462 01 25
belgium@texim-europe.com



Denmark

Sdr. Jagtvej 12
DK-2970 Hørsholm
Tel: +45 88 20 26 30
Fax: +45 88 20 26 39
nordic@texim-europe.com



Germany

Bahnhofstrasse 92
D-25451 Quickborn
Tel: +49 (0)4106 627 07-0
Fax: +49 (0)4106 627 07-20
germany@texim-europe.com



Germany

Martin-Kollar-Strasse 9
D-81829 München
Tel: +49 (0)89 436 086-0
Fax: +49 (0)89 436 086-19
germany@texim-europe.com



Austria

Warwitzstrasse 9
A-5020 Salzburg
Tel: +43 (0)662 216026
Fax: +43 (0)662 216026-66
austria@texim-europe.com



United Kingdom

St. Mary's House, Church Lane
Carlton Le Moorland
Lincoln LN5 9HS
Tel: +44 (0)1522 789 555
Fax: +44 (0)845 299 22 26
uk@texim-europe.com

For more information: www.texim-europe.com

