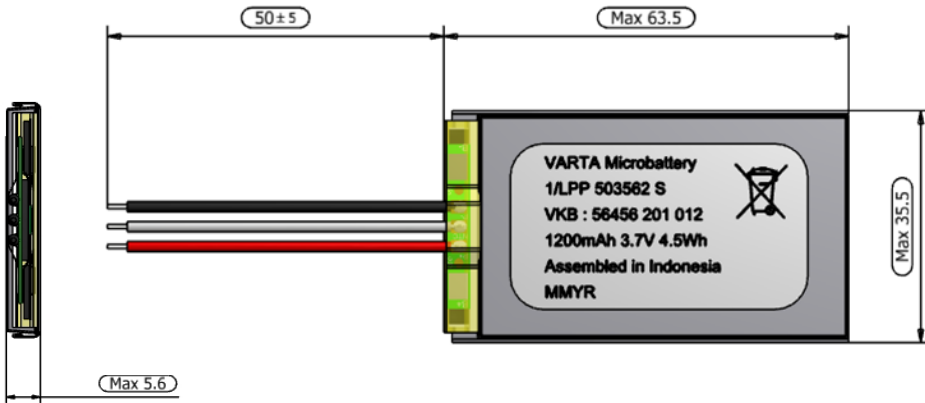


# Product Information

1/LPP 503562 S PCM W  
 ▶ VKB 56456 201 012



Distributed by:



www.texim-europe.com

VARTA Microbattery  
 1/LPP 503562 S  
 VKB : 56456 201 012  
 1200mAh 3.7V 4.5Wh  
 Assembled in Indonesia  
 MMYR



MM ▶ month two digits  
 Y ▶ year one digit  
 R ▶ week one digit

## 1. GENERAL

Battery with safety circuit & wires

Cell	▶ LPP 503562 S
PCM	▶ Yes
NTC	▶ 10kΩ ± 1%; B-value 3380
ID	▶ None
Configuration	▶ 1S
Weight	▶ appr. 23g

## 2. ELECTRICAL SPECIFICATION

Rated Capacity	▶ 1150mAh min., 1200mAh nominal
Nominal Voltage	▶ 3.7V
Watt-Hour Rating	▶ 4.5Wh
Charging Method	▶ Constant Current + Constant Voltage
Max. Charge Voltage:	▶ 4.2V
Max. Continuous Charge Current:	▶ 1150mA (limited by cell DS)
Rec. Charge Cut Off:	▶ 11.5mA or timer 2.0h
Max. Continuous Discharge Current:	▶ 2A (limited by PCM)
Rec. Discharge Cut Off:	▶ 3V
Internal Impedance:	▶ approx. 100mΩ
Expected Cycle Life @ (1.0C/1.0C) @ 23.5°C	▶ 500 cycles > 70%

## CELL PROTECTION

Overcharge Detection	▶ 4.275V ± 25mV (0.7 to 1.3sec. delay, resume 4.275V ± 25mV)
Overdischarge Detection:	▶ 2.3V ± 58mV (14 to 26msec. delay, resume 2.3V ± 58mV)
Overcurrent Detection	▶ 2A to 4.5A (8 to 16msec. delay @ discharge)

## 3. AMBIENT CONDITIONS

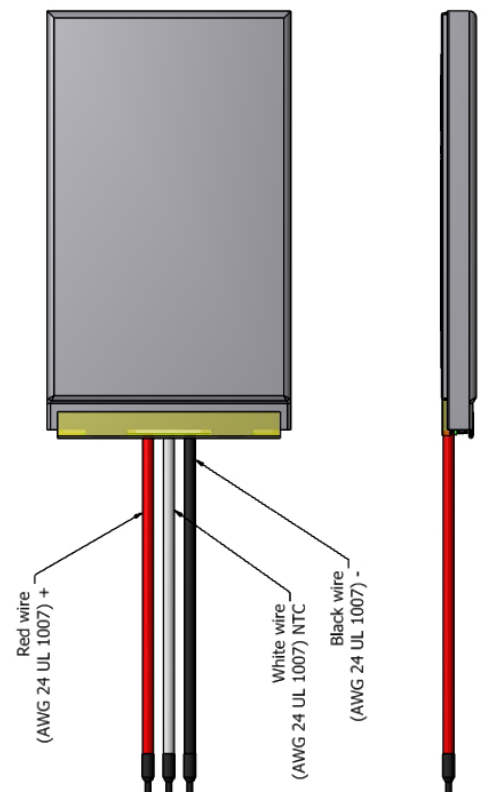
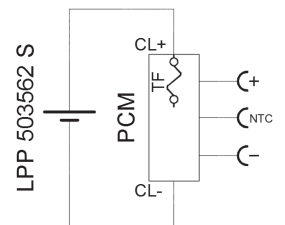
Temperature Range	
• Charge	▶ 0 to +45°C
• Discharge	▶ -20 to +60°C
• Storage with >60% recovery	▶ 1 year at -20 to +30°C ▶ 3 months at -20 to +45°C ▶ 1 month at -20 to +60°C
• Humidity	▶ 65 ± 20%RH

## 4. ENVIRONMENTAL AND SAFETY

Please follow VARTA Handling and Safety Precautions for Lilon & LiPolymer.  
 The cell used is a UL recognized component according to UL1642 and UN 38.3 certified.  
 The cell is IEC 62133 edition 2 certified.  
 This battery meets the requirements of Battery Directives and the battery parts are RoHS-Compliant.

Minimum Order Quantity: 600 pcs / Order Multiples: 120 pcs - Product for OEM customers only!

## Circuit Diagram



## The Netherlands



Elektrostraat 17  
NL-7483 PG Haaksbergen

T: +31 (0)53 573 33 33  
F: +31 (0)53 573 33 30  
E: [nl@texim-europe.com](mailto:nl@texim-europe.com)

## Belgium



Zuiderlaan 14 bus 10  
B-1731 Zellik

T: +32 (0)2 462 01 00  
F: +32 (0)2 462 01 25  
E: [belgium@texim-europe.com](mailto:belgium@texim-europe.com)

## UK & Ireland



St. Mary's House, Church Lane  
Carlton Le Moorland  
Lincoln LN5 9HS

T: +44 (0)1522 789 555  
F: +44 (0)845 299 22 26  
E: [uk@texim-europe.com](mailto:uk@texim-europe.com)

## Germany North



Bahnhofstrasse 92  
D-25451 Quickborn

T: +49 (0)4106 627 07-0  
F: +49 (0)4106 627 07-20  
E: [germany@texim-europe.com](mailto:germany@texim-europe.com)

## Germany South



Martin-Kollar-Strasse 9  
D-81829 München

T: +49 (0)89 436 086-0  
F: +49 (0)89 436 086-19  
E: [germany@texim-europe.com](mailto:germany@texim-europe.com)

## Austria



Warwitzstrasse 9  
A-5020 Salzburg

T: +43 (0)662 216 026  
F: +43 (0)662 216 026-66  
E: [austria@texim-europe.com](mailto:austria@texim-europe.com)

## Nordic region



Sdr. Jagtvej 12  
DK-2970 Hørsholm

T: +45 88 20 26 30  
F: +45 88 20 26 39  
E: [nordic@texim-europe.com](mailto:nordic@texim-europe.com)

## General information



[info@texim-europe.com](mailto:info@texim-europe.com)  
[www.texim-europe.com](http://www.texim-europe.com)