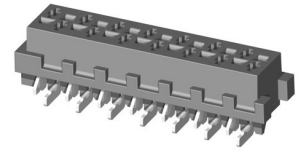
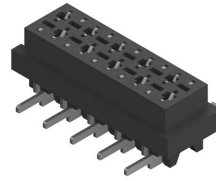
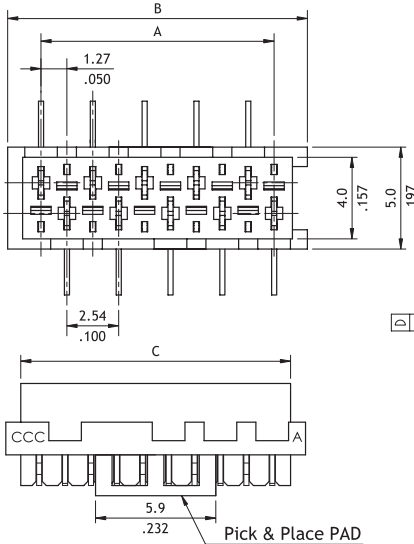


CA32 Series 1.27mm(.050") Female SMT Type Connectors

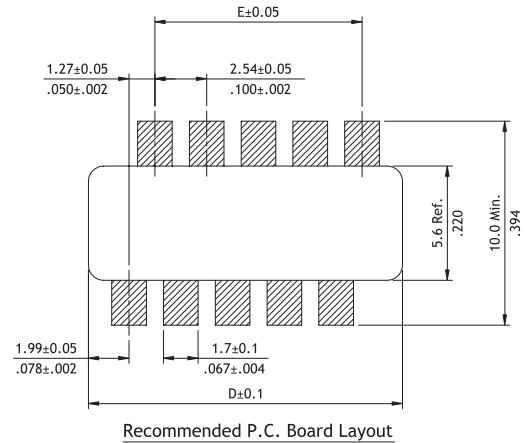
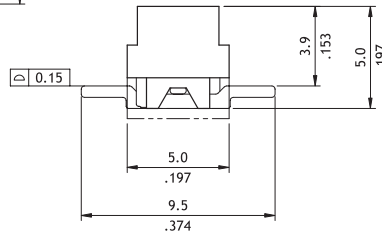
- ⊙ Mate with CA30 connector
- ⊙ High temperature plastic UL 94V-0, color red



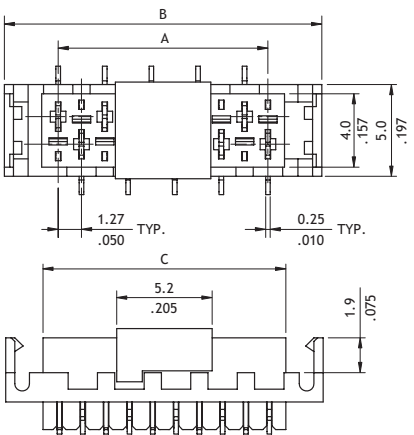
P/N CA32**M**0A



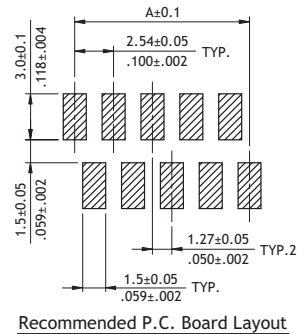
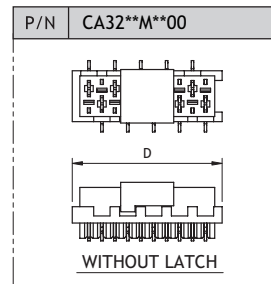
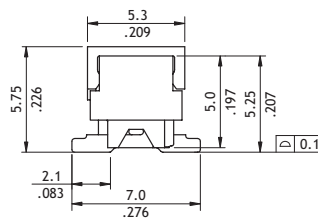
A = 1.27 x No. of Spaces
 B = A + 3.28
 C = A + 1.80
 D = A + 3.97
 E = A - 1.27



P/N CA32**M**0L



A = 1.27 x No. of Spaces
 B = A + 5.87
 C = A + 1.80
 D = A + 3.27



Ordering Code

① CA ② 32 ③ M ④ 1 ⑤ 3 ⑥ 0 ⑦ A

- ① Series No.
- ② No. of Circuits: 04 to 26
- ③ Contact Type: M = SMT Type
- ④ Plating Code:
1 = Matte Tin over Nickel
*Optional plating available but MOQ requested
- ⑤ Color: 3 = Red

- ⑥ Pad Options:
0 = With Pad (Reel Packing)
- ⑦ Other Options:
A = Middle mount type
0 = Top mount type (Without Latch)
L = Top mount type (With Latch)
*Special options consult manufacturer

CA30 & CA31 Series Flat Cable Assemblies

Compact and low profile IDC connector with 1.27mm pitch flat cable assembly combinations.

With full range connectors produced in house, Cvilux is fully equipped to provide cost-effective and high quality flat cable assemblies.

Furthermore, integrated production and assembly process can save your time to market and increase more profit.

Please check below sketch for all kinds of options and advice more details (length, stripped, red line positions, polarizing direction....etc.) we will follow up your request accordingly.

Consult CviLux sales person if customized assembly required.

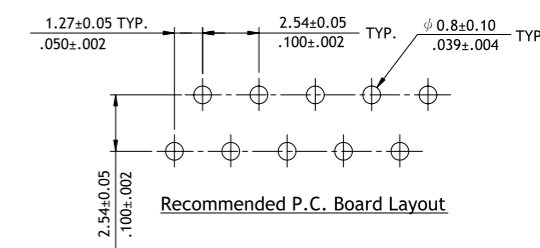
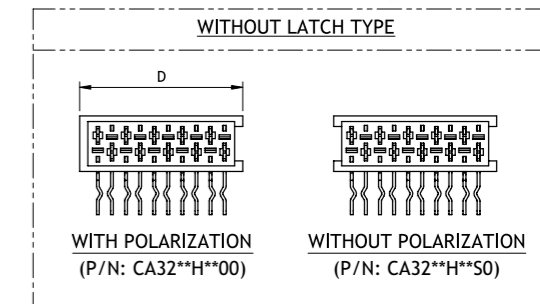
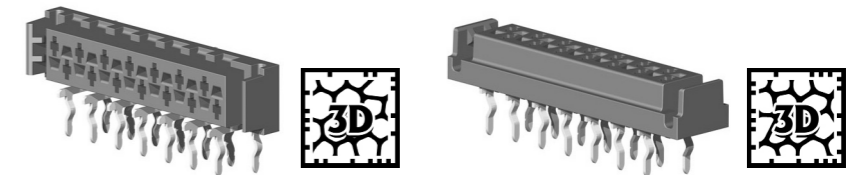
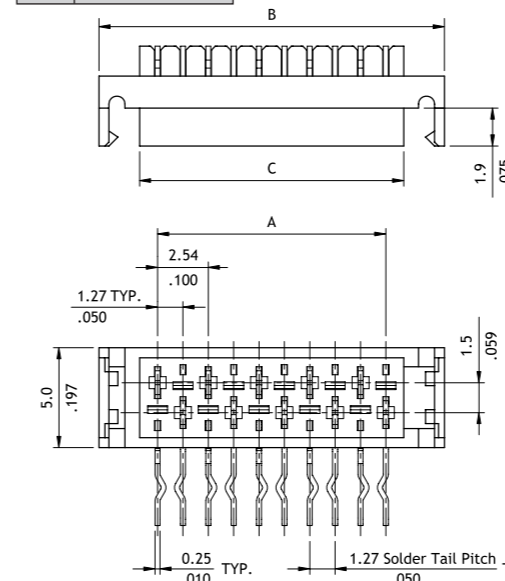
TYPE A	TYPE B	TYPE C	TYPE D
TYPE E	TYPE F	TYPE G	TYPE H
TYPE J	TYPE K	TYPE M	TYPE N
TYPE P	TYPE Q	TYPE R	TYPE S

CA32 Series 1.27mm(.050") Female DIP Type Connectors

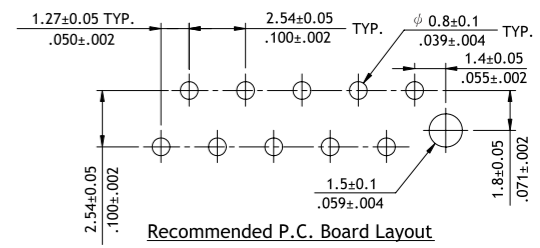
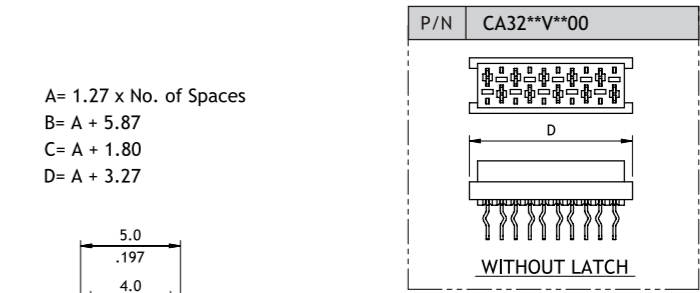
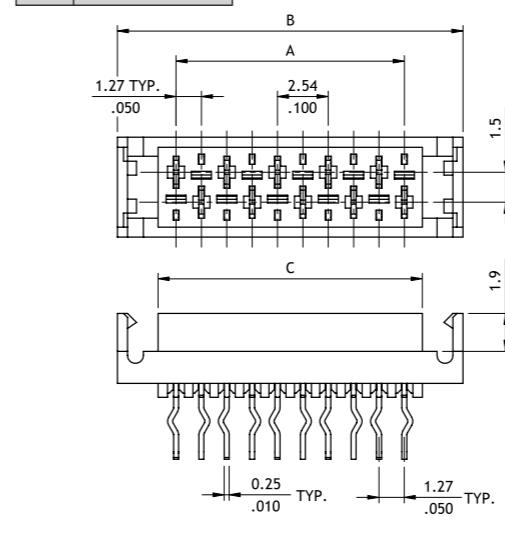
☉ Mate with CA30 connector



P/N CA32**H**0L



P/N CA32**V**0L



Ordering Code

① CA ② 32 ③ H ④ 1 ⑤ 3 ⑥ 00

- ① Series No.
- ② No. of Circuits: 04 to 26
- ③ Contact Type: V = Straight
H = Right Angle
- ④ Plating Code:
1 = Matte Tin over Nickel
*Optional plating available but MOQ requested
- ⑤ Color: 3 = Red
- ⑥ Right Angle Type:
00 = Without Latch & With Polarization
S0 = Without Latch & Without Polarization
0L = With Latch
Straight Type:
00 = Without Latch
0L = With Latch
*Special options consult manufacturer

CA

CA

IDC CONNECTORS

IDC CONNECTORS

The Netherlands



Elektrostraat 17
NL-7483 PG Haaksbergen

T: +31 (0)53 573 33 33
F: +31 (0)53 573 33 30
E: nl@texim-europe.com

Belgium



Zuiderlaan 14 bus 10
B-1731 Zellik

T: +32 (0)2 462 01 00
F: +32 (0)2 462 01 25
E: belgium@texim-europe.com

UK & Ireland



St. Mary's House, Church Lane
Carlton Le Moorland
Lincoln LN5 9HS

T: +44 (0)1522 789 555
F: +44 (0)845 299 22 26
E: uk@texim-europe.com

Germany North



Bahnhofstrasse 92
D-25451 Quickborn

T: +49 (0)4106 627 07-0
F: +49 (0)4106 627 07-20
E: germany@texim-europe.com

Germany South



Martin-Kollar-Strasse 9
D-81829 München

T: +49 (0)89 436 086-0
F: +49 (0)89 436 086-19
E: germany@texim-europe.com

Austria



Warwitzstrasse 9
A-5020 Salzburg

T: +43 (0)662 216 026
F: +43 (0)662 216 026-66
E: austria@texim-europe.com

Nordic region



Sdr. Jagtvej 12
DK-2970 Hørsholm

T: +45 88 20 26 30
F: +45 88 20 26 39
E: nordic@texim-europe.com

General information



info@texim-europe.com
www.texim-europe.com