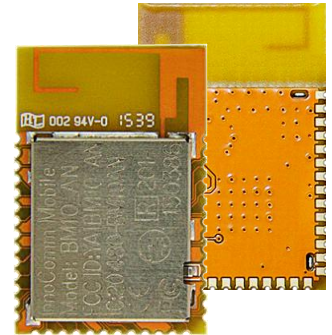




BM10: Bluetooth Low Energy (Bluetooth Smart) Module

Product Description:

BM10 series built in the latest Bluetooth 4.1 Low Energy technology inside together with Texas Instrument® SimpleLink Wireless MCU CC2640 as the core. The CC2640 contains a powerful 32-bit ARM® Cortex M3 to handle the application, an ARM Cortex M0 to handle the radio protocols and a Sensor Controller to handle sensor readings and processing. InnoComm BM10, an ultra low power Bluetooth Smart module, is the best choice for your IoT solution providing more efficient and powerful structure and comprehensive support in both hardware and software design.



Key Features:

- ARM Cortex M3 with sensor engine and embedded flash
- Embedded antenna
- Ultra-low power RF
- Up to date certificated BLE software stack

Specifications

- **Radio Frequency**
 - 2.4-GHz Bluetooth Low Energy compliance
 - RF frequency range 2360 – 2500MHz
 - Programmable output power up to +5dBm
 - Excellent receiver sensitivity (-97 dBm)
 - Suitable for system targeting compliance with worldwide radio frequency regulations:
 - ETSI EN 300 328(Europe)
 - EN 300 440 Class 2(Europe)
 - FCC CFR47 Part 15(US)
 - ARIB STD-T66 (Japan)
- **Low Power**
 - Active mode RX: 6.7mA
 - Active mode TX at 0dBm: 7.4mA
 - Active mode TX at 5dBm: 9.9mA
- **Memory**
 - 128KB Flash
 - 20KB SRAM+8KB SRAM for Cache
- **Physical Specification**
 - Dimension: 16.70 x 25.45 x 2.0 mm
 - Pin count: 40
 - I/O: x31 GPIO (can be configured to Max. 1x UART, 2x SPI, 1x I2S, 1x I2C)
- **Operating Temperature**
 - -40°C to +85°C
- **Power Supply**
 - Voltage Range: 1.9V ~ 3.8V
- **Mounting Method**
 - SMD
- **Pre-certification**
 - CE, FCC
 - Canadian IC
 - Japan MIC
 - NCC
 - QDID

Target Applications

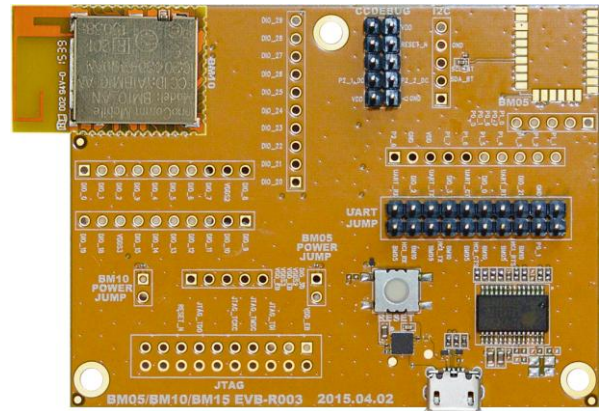
- Health & Fitness
- Home & Building Automation
- Remote Control
- Wireless Sensor Network
- ...etc

Software Features

- TI-RTOS
- Fully tested & certified BT 4.1 stack & profiles
- BLE Protocol Stack in library format
- Sample applications

Support & Service

- Multiple software development tool supported
 - IAR Embedded Workbench® for ARM
 - Code Composer Studio
- Evaluation board
- Upper layer protocol and application development tool to be available for download



Ordering information

Please email to innocomm@innocomm.com or call +886-3-5781868 for more information.

InnoComm Mobile Technology, a 3rd party of Texas Instrument offering the wireless module to its customers, is based in Taiwan Hsinchu Science Park. InnoComm has been offering solutions and professional services to customers and helping them to stay competitive in the fast-changing wireless world.



Legal Notice:

All rights reserved. Reproduction, use, modification, or disclosure to third parties of this document or any part thereof without the express permission of InnoComm Mobile Technology Corp. is strictly prohibited. The information contained herein is provided "as is" without warranty of any kind, either express or implied is made in relation to the accuracy, reliability, fitness for a particular purpose or content of this document.

