

TEK SERIES



Distributed by:



yocto
PROJECT



TEK SERIES

TEK Series

The TEK-Series is a fanless industrial computer based on ARM or x86 technology enclosed in a compact, fully aluminium ruggedized enclosure. Incorporating a cable-less design having all I/O connectors on the main SBC or brought towards the Power Networking or Automation I/O Expansion Modules by using a high-speed board-to-board connector.

Wireless communication, such as 3G, LTE or Wi-Fi, supported by an internal Mini PCIe socket with SIM socket or M.2 expansion slot.

Making the TEK-Series perfect for controlling your versatile end-equipment or connect them up to the Cloud.

Power and Networking Expansion Module Interface

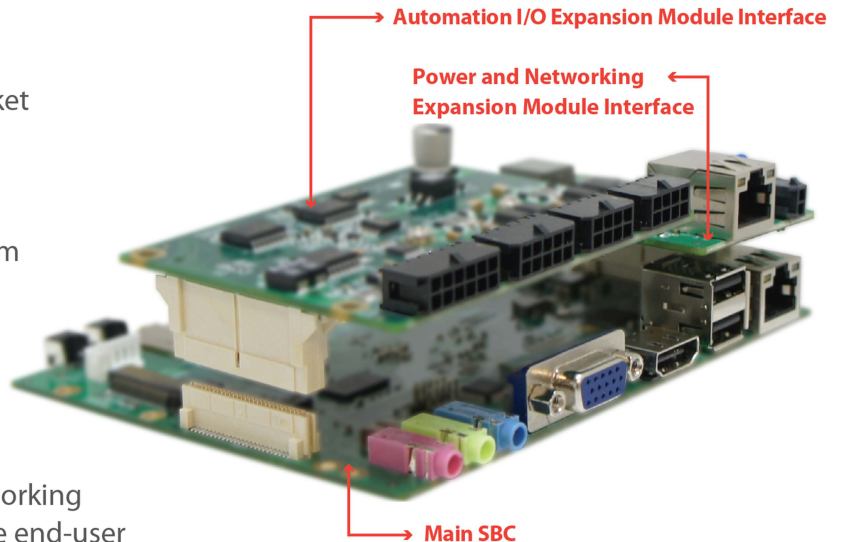
The TEK-Series comes with a Power and Networking Expansion Module that not only adopts to the end-user application power requirements but also adds networking and control I/O such as SPI, I²C and GPIO.

A range of off-the-shelf modules are available with a single 12VDC, 24VDC input or an 10-30VDC wide power input. Additionally modules are available with Power-over-Ethernet and smart network switching capabilities to the TEK-Series.

Automation I/O Expansion Module Interface

Expanding the TEK-Series with an additional I/O Module that adds CAN Bus, UART, I²C, SPI, USB and GPIO interfaces.

A range of off-the-shelf modules are available with galvanic isolated I/O, RS-232/422/485 or an extensive number of GPIO's.



TechNexion and Open Source

TechNexion TEK-Series come standard with source code and binary demo image for the following operating systems:



Android binary demo images, instructions to make your own, as well as complete source code available.



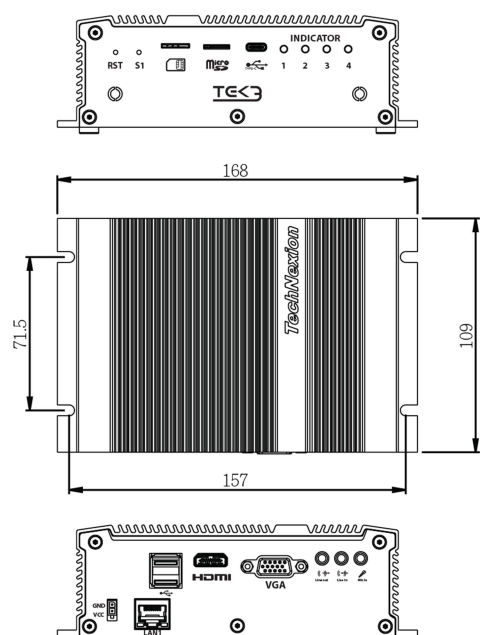
Linux binary demo images and full source code u-boot, kernel and support packages available.



Yocto binary demo images and full source code u-boot, kernel and support packages available.



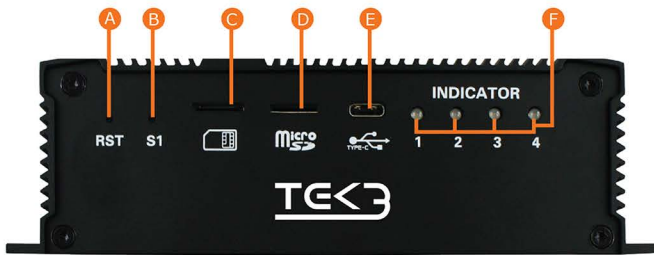
Ubuntu binary demo images available.



(units in mm)

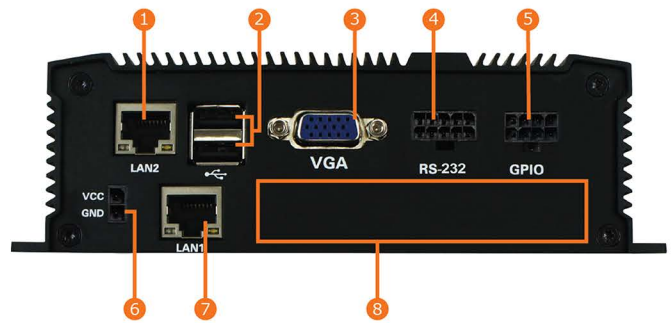
OVERVIEW

TEK3-IMX6UL



A: Reset Button
B: S1 Button
C: SIM cardslot

D: Micro SD
E: USB TYPE-C
F: LED x4

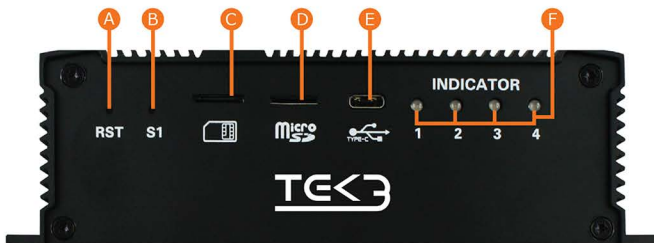


1: LAN2
2: USB 2.0
3: VGA

4: RS-232
5: GPIO
6: Power

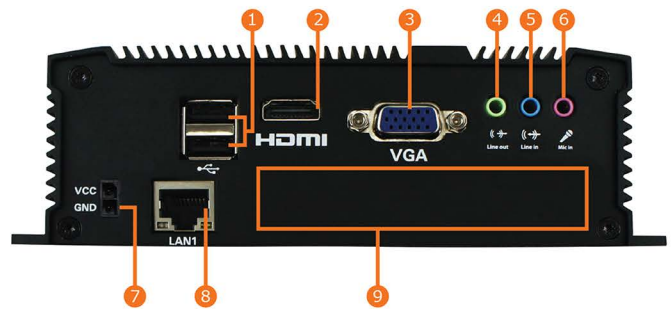
7: LAN1
8: Expansion I/O

TEK3-IMX6



A: Reset Button
B: S1 Button
C: SIM cardslot

D: Micro SD
E: USB TYPE-C
F: LED x4

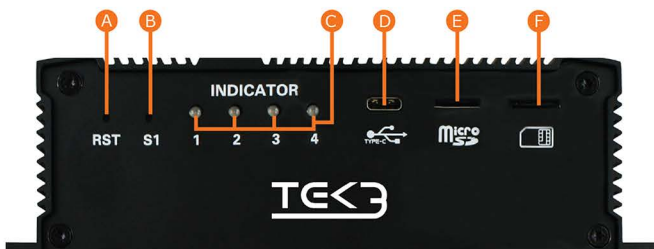


1: USB 2.0
2: HDMI
3: VGA

4: Line out
5: Line in
6: Mic in

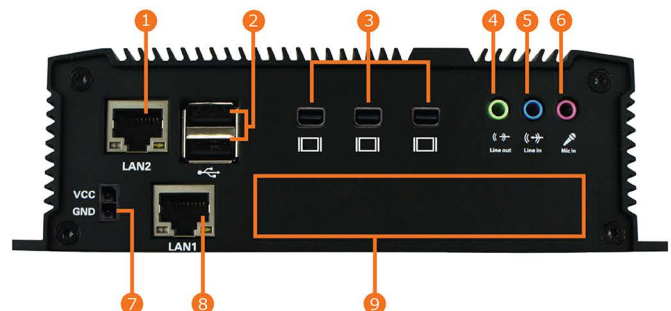
7: Power
8: LAN1
9: Expansion I/O

TEK3-BSW



A: Reset Button
B: S1 Button
C: LED x4

D: USB TYPE-C
E: Micro SD
F: SIM cardslot



1: LAN2
2: USB3.0
3: mini DP x3

4: Line out
5: Line in
6: Mic in

7: Power
8: LAN1
9: Expansion I/O

KEY FEATURES



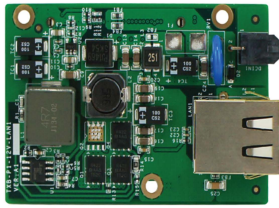
Model Name	TEK3-IMX6UL	TEK3-IMX6	TEK3-BSW
Technology	ARM Cortex A7	ARM Cortex A9	Intel x86
SoC	i.MX6 Ultralite 528MHz	i.MX6 Solo 1GHz i.MX6 Duallite 1GHz i.MX6 Dual 1GHz i.MX6 Quad 1GHz	Pentium® N3710 (4x 1.60GHz) Celeron® N3160 (4x 1.60GHz) Celeron® N3060 (2x 1.60GHz) Celeron® N3010 (2x 1.04GHz) Atom™ x5-E8000 (4x 1.04GHz)
Memory	up to 1GB DDR3	up to 4GB DDR3	up to 8GB So-Dimm DDR3
Mass Storage	eMMC 4GB	eMMC 4GB	M.2 SSD / eMMC 4GB (optional)
Removable Storage	Micro SD	Micro SD	Micro SD
Ethernet	Micrel KSZ8084 10/100 LAN	Atheros 8031 Gigabit LAN	Intel i211 Gigabit LAN
USB Host	2	2	2
USB OTG	1x Type C	1x Type C	1x Type C
Display Interface	1x VGA	1x HDMI 1x VGA	3x mini display port
Audio	3x 3.5mm audio jack	3x 3.5mm audio jack	3x 3.5mm audio jack
mini-PCIe + SIM cardslot	1 *note 1	1	1
M.2 Connector	1 *note 1	1	1
Expansion pinheader	2	2	2
CAN Bus	2 *note 2	2 *note 2	
Serial	2 onboard RS-232 2 *note 2	2 *note 2	2 *note 2
GPIO	4 onboard 8 *note 2	8 *note 2	8 *note 2
Power	2 pin Microfit Connector *note 3	2 pin Microfit Connector *note 3	2 pin Microfit Connector *note 3
Dimensions	168 (W) x 109 (H) x 55 (D) mm	168 (W) x 109 (H) x 55 (D) mm	168 (W) x 109 (H) x 55 (D) mm
Weight	685g	685g	685g
Certification	Compliant with CE, FCC	Compliant with CE, FCC	Compliant with CE, FCC
OS Support	Linux	Android, Linux, Ubuntu	Linux, Ubuntu, Windows

* Note 1 : Only USB signals routed

* Note 2 : Available on I/O Expansion Board

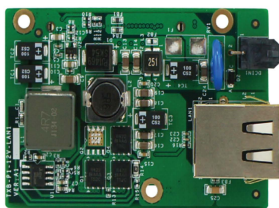
* Note 3 : Available on Power Expansion Board

EXPANSION MODULES



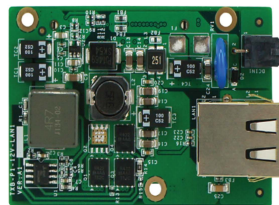
TXB-P1-12V-LAN1

- 12 VDC power input
- 1x RJ45 LAN connector



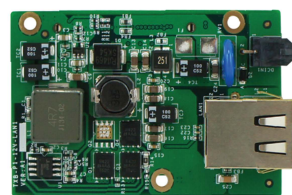
TXB-P1-24V-LAN1

- 24 VDC power input
- 1x RJ45 LAN connector



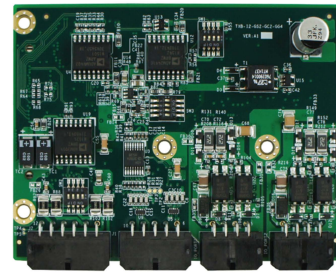
TXB-P1-1030V-LAN1

- 10~30 VDC wide power input
- 1x RJ45 LAN connector



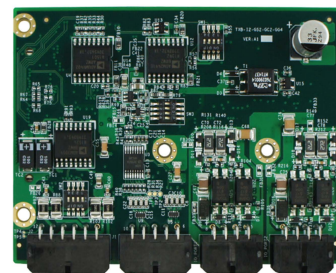
TXB-P1-12V-POE1

- 12 VDC power input
- 1x RJ45 connector
Power over Ethernet (802.3at)



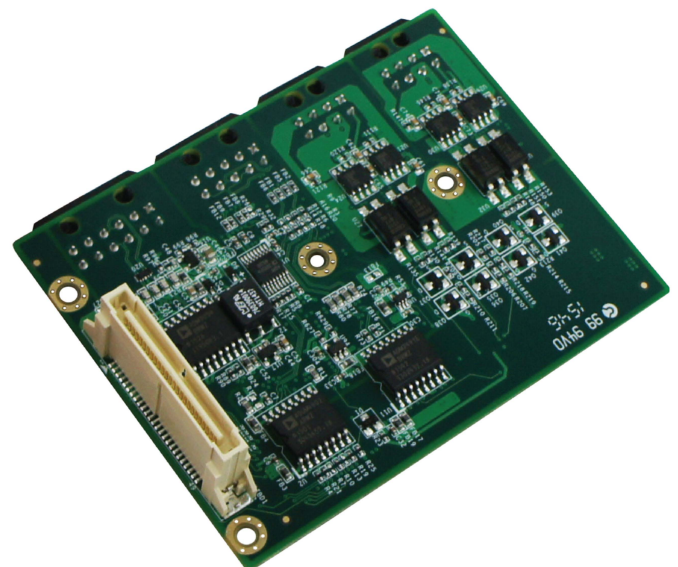
TXB-I2-GS2-GC2-GG8

- 1x galvanic isolated serial port RS232/422/485
- 1x galvanic isolated serial port RS232
- 2x galvanic isolated CAN bus controller
- 4x galvanic isolated GPIO input
- 4x galvanic isolated GPIO output



TXB-I2-S2-C2-G8

- 2x Serial ports RS232
- 2x CAN bus controller
- 8x GPIO



TechNexion



TechNexion Ltd.
16F-5, No.736,Zhongzheng Rd.,
Zhonghe Dist., New Taipei City, 23511, Taiwan
Tel: +886-2-8227-3585 Fax: +886-2-8227-3590
E-mail: Sales@technexion.com
[http:// www.technexion.com](http://www.technexion.com)

The Netherlands



Elektrostraat 17
NL-7483 PG Haaksbergen

T: +31 (0)53 573 33 33
F: +31 (0)53 573 33 30
E: nl@texim-europe.com

Belgium



Zuiderlaan 14 bus 10
B-1731 Zellik

T: +32 (0)2 462 01 00
F: +32 (0)2 462 01 25
E: belgium@texim-europe.com

UK & Ireland



St. Mary's House, Church Lane
Carlton Le Moorland
Lincoln LN5 9HS

T: +44 (0)1522 789 555
F: +44 (0)845 299 22 26
E: uk@texim-europe.com

Germany North



Bahnhofstrasse 92
D-25451 Quickborn

T: +49 (0)4106 627 07-0
F: +49 (0)4106 627 07-20
E: germany@texim-europe.com

Germany South



Martin-Kollar-Strasse 9
D-81829 München

T: +49 (0)89 436 086-0
F: +49 (0)89 436 086-19
E: germany@texim-europe.com

Austria



Warwitzstrasse 9
A-5020 Salzburg

T: +43 (0)662 216 026
F: +43 (0)662 216 026-66
E: austria@texim-europe.com

Nordic region



Sdr. Jagtvej 12
DK-2970 Hørsholm

T: +45 88 20 26 30
F: +45 88 20 26 39
E: nordic@texim-europe.com

General information



info@texim-europe.com
www.texim-europe.com