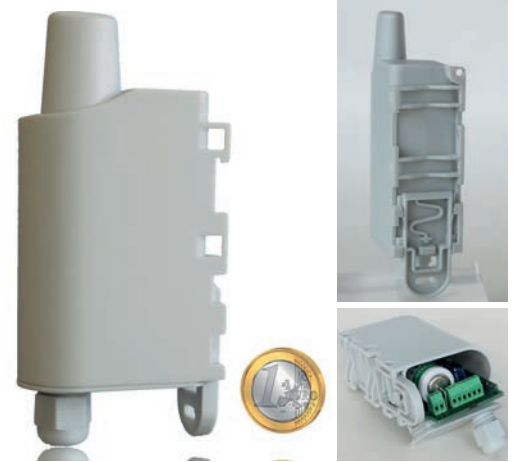


LoRaWAN Pulse Transceiver

Highlights

- Radio transmission of meter data through LoRaWAN compliant networks
- Water, gaz, electricity & heat meters
- Up to two meters per transmitter
- Range up to 10km
- Up to 10 years of autonomy
- IP67 enclosure



LoRa Alliance

The **LoRaWAN Pulse** from Adeunis RF is a ready-to-use **radio transceiver** allowing to **transmit data from water, gas, electricity & heat meters**.

The **LoRaWAN Pulse** provides connection to any operated network using the LoRaWAN protocol.

Two meters can be supported by a single **LoRaWAN Pulse** transmitter allowing a significant **reduction of costs** of implementation and deployment.

The configuration of the transmitter can be done **via the network** allowing the choice of **periodicity, pulse weight** or **data encryption**.

Powered through a Lithium battery, it allows an autonomy guaranteed up to **10 years**.

Performances

RF power: 14dBm (25mW)
RF sensitivity: up to -140dBm
Range: up to 10km

Firmware

LoRaWAN V1 network protocol
Transmission cycles: 10mn, 1h, 12h or defined by network
History of data
Data encryption: AES128

Warnings

Battery end of life

Consumption & needs

Operating voltage: 3.6V nominal
Power supply: through Li-SOCI2 battery
Lifespan: up to 10 years

Compatibility

Water, Gas, Electricity and Heat meters

General information

Operating temperature: -20°C / +75°C
Integrated fixation systems: DIN-Rail, tube, wall, necklace
Dimensions: 105 x 50 x 27 mm
Weight: 80gr
Housing: IP67 (IP68 on demand)
Standards: EN 300-220, EN 301-489, EN 60950

References

- **ARF8046PA** LoRaWAN PULSE

Distributed by:



ADEUNIS RF

283 rue Louis Néel - Parc Technologique Pré Roux
38920 CROLLES - France
Tel.: +33 (0)4 76 92 07 77 - Fax: +33 (0)4 76 04 80 87
www.adeunis-rf.com - arf@adeunis-rf.com

The Netherlands



Elektrostraat 17
NL-7483 PG Haaksbergen

T: +31 (0)53 573 33 33
F: +31 (0)53 573 33 30
E: nl@texim-europe.com

Belgium



Zuiderlaan 14 bus 10
B-1731 Zellik

T: +32 (0)2 462 01 00
F: +32 (0)2 462 01 25
E: belgium@texim-europe.com

UK & Ireland



St. Mary's House, Church Lane
Carlton Le Moorland
Lincoln LN5 9HS

T: +44 (0)1522 789 555
F: +44 (0)845 299 22 26
E: uk@texim-europe.com

Germany North



Bahnhofstrasse 92
D-25451 Quickborn

T: +49 (0)4106 627 07-0
F: +49 (0)4106 627 07-20
E: germany@texim-europe.com

Germany South



Martin-Kollar-Strasse 9
D-81829 München

T: +49 (0)89 436 086-0
F: +49 (0)89 436 086-19
E: germany@texim-europe.com

Austria



Warwitzstrasse 9
A-5020 Salzburg

T: +43 (0)662 216 026
F: +43 (0)662 216 026-66
E: austria@texim-europe.com

Nordic region



Sdr. Jagtvej 12
DK-2970 Hørsholm

T: +45 88 20 26 30
F: +45 88 20 26 39
E: nordic@texim-europe.com

General information



info@texim-europe.com
www.texim-europe.com