

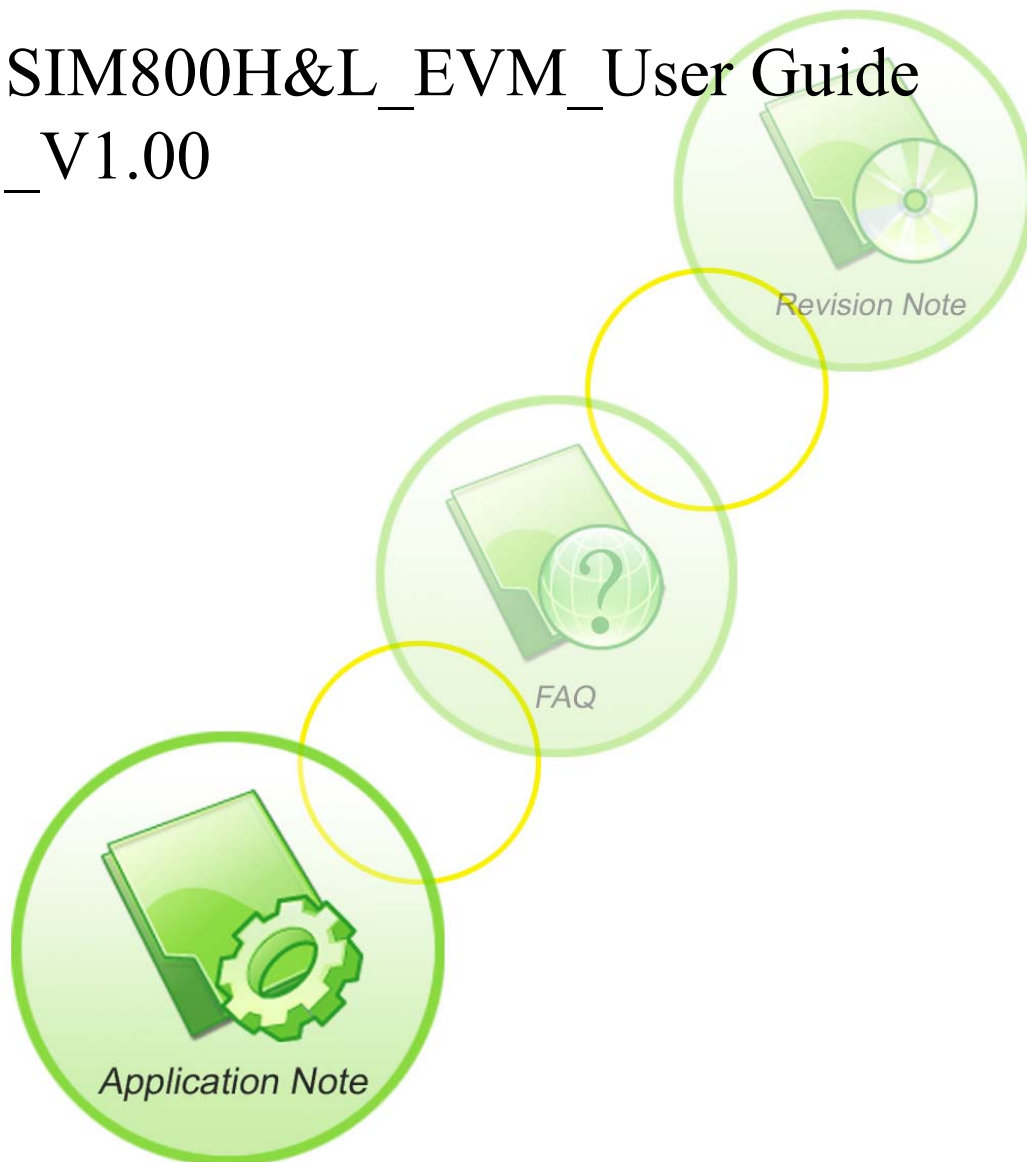
DISTRIBUTED BY TEXIM EUROPE

Distributed by:



A company of SIM Tech

SIM800H&L_EVM_User Guide _V1.00



Document Title:	SIM800H&L_EVM_User Guide
Version:	1.00
Date:	2013-08-17
Status:	Release
Document Control ID:	SIM800H&L_EVM_User Guide_V1.00

General Notes

SIMCom offers this information as a service to its customers, to support application and engineering efforts that use the products designed by SIMCom. The information provided is based upon requirements specifically provided to SIMCom by the customers. SIMCom has not undertaken any independent search for additional relevant information, including any information that may be in the customer's possession. Furthermore, system validation of this product designed by SIMCom within a larger electronic system remains the responsibility of the customer or the customer's system integrator. All specifications supplied herein are subject to change.

Copyright

This document contains proprietary technical information which is the property of SIMCom Limited., copying of this document and giving it to others and the using or communication of the contents thereof, are forbidden without express authority. Offenders are liable to the payment of damages. All rights reserved in the event of grant of a patent or the registration of a utility model or design. All specification supplied herein are subject to change without notice at any time.

Copyright © Shanghai SIMCom Wireless Solutions Ltd. 2013

Contents

1	EVM Accessory	6
2	TE Introduce	8
3	EVB Introduce	9
3.1	Power Interface	10
3.2	Audio Interface	11
3.3	SIM Card Interface.....	12
3.4	Serial Port Interface.....	12
3.5	LED Indicator	13
3.6	Test Interface.....	14
3.6.1.	J103	14
3.6.2.	J201	15
3.6.3.	J104.....	16
4	Illustration:.....	17
4.1	Turn on Module:.....	17
4.2	Turn off Module.....	17
4.3	Registering Network and Making a Call.....	17
4.4	Software Upgrade.....	22

Figure Index

Figure 1: EVM accessory	6
Figure 2: EVB and accessory	7
Figure 3: TE top view	8
Figure 4: EVB Top view	9
Figure 5: EVB Bottom view	9
Figure 6: Power interface	10
Figure 7: Audio interface	11
Figure 8: SIM card interface	12
Figure 9: Serial port Interface	12
Figure 10: LED Indicator	13
Figure 11: Test interface overview	14
Figure 12: J103 interface.....	14
Figure 13: J201 Interface	15
Figure 14: J104 Interface	16

Version History:

Data	Version	Description of change	Author
2013-08-17	1.00		Songjialin

SCOPE

This document presents the usage of EVM. This document can apply to SIM800L-EVM and SIM800H-EVM.

1 EVM Accessory



Figure 1: EVM accessory

- A: USB-to-RS232 cable
- B: 5V DC adapter
- C: GSM antenna
- D: Mini gender changer
- E: SIM900 EVB
- F: SIM800H-TE/SIM800L-TE
- G: Earphone (2.5mm)
- H: USB data cable



Figure 2: EVB and accessory

SIMCOM CONFIDENTIAL

2 TE Introduce

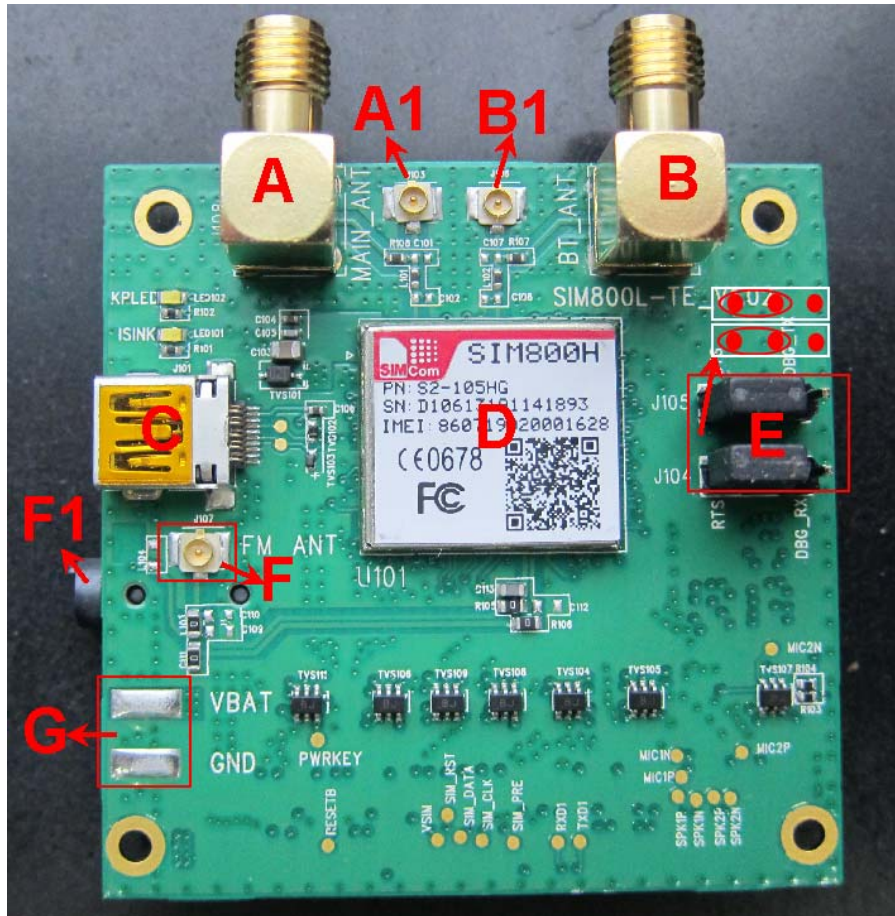


Figure 3: TE top view

- A: SMA connector of GSM antenna (default)
- A1: Test connector of GSM antenna
- B: SMA connector of Bluetooth antenna
- B1: Test connector of Bluetooth antenna
- C: Mini-USB interface
- D: SIM800H or SIM800L module
- E: Two jumpers
- F: Test connector of FM antenna
- F1: Antenna connector of FM
- G: Test point of VBAT

Note:

1. If use full mode serial port, connect two jumpers to the left. If full mode is not necessary, it could be multiplexed into two serial ports without flow control and connect two jumpers to the right, customers can use **DBG_TX, DBG_RX**

2. Customers can use a 3.5 mm earphone (connected to F1) as the FM antenna.

3 EVB Introduce

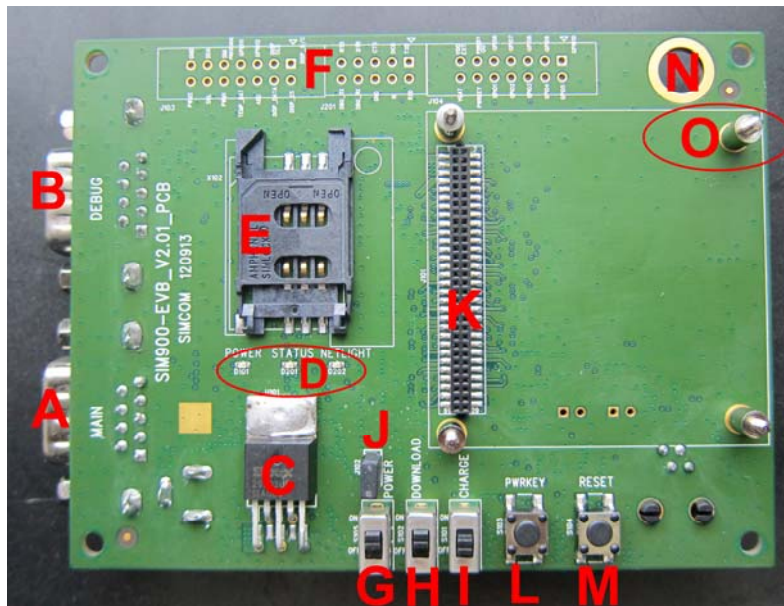


Figure 4: EVB Top view

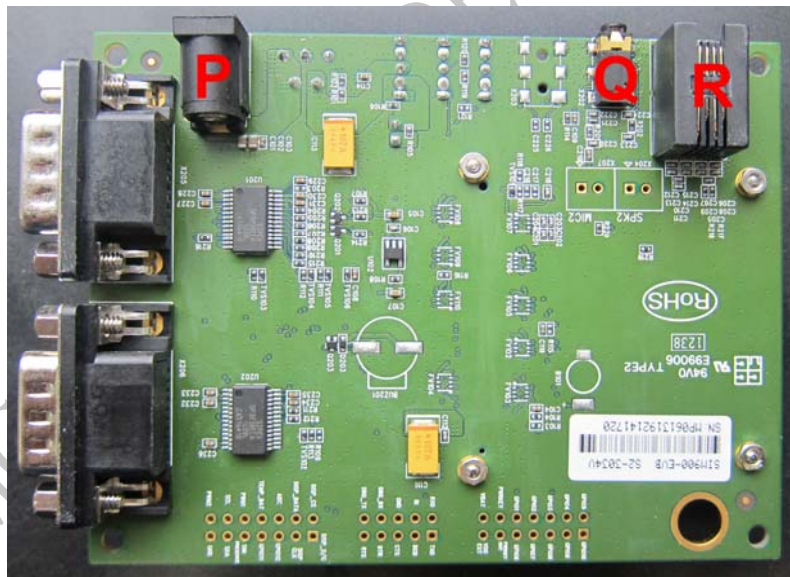


Figure 5: EVB Bottom view

- A: MAIN serial port
- B: DEBUG serial port
- C: LDO
- D: LED indicator
- E: SIM card holder
- F: Test point
- G: Power switch

- H: Download switch
- I: Charge switch (SIM800H/L do not use)
- J: VBAT jumper
- K: Module-TE interface
- L: Power key
- M: Reset key
- N: GND PAD
- O: Module fix hole
- P: DC jack
- Q: 2.5mm earphone jack
- R: Headphones jack

3.1 Power Interface

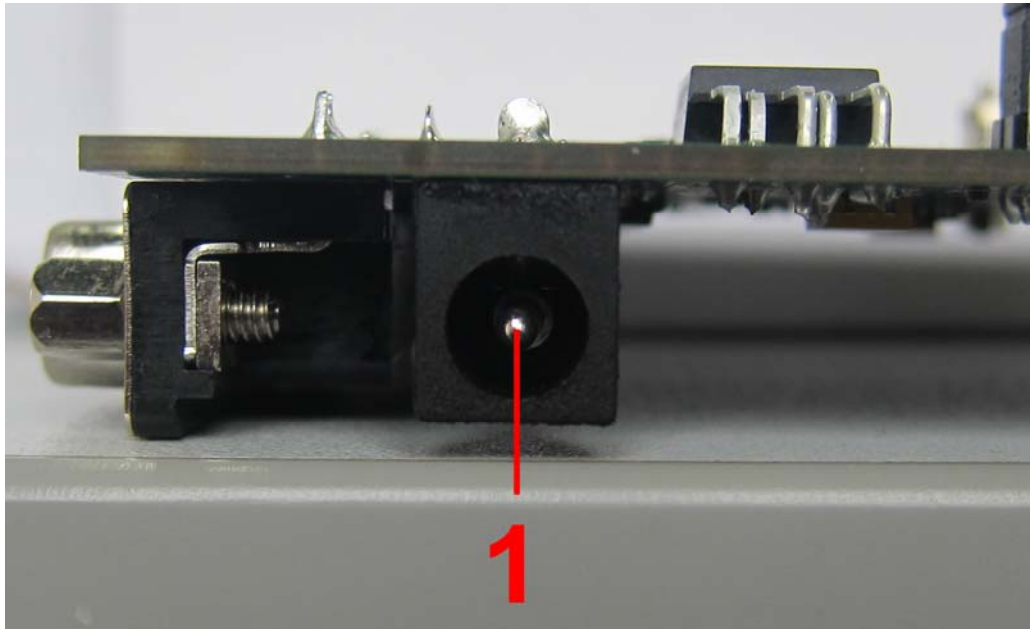


Figure 6: Power interface

Pin	Signal	I/O	Description
1	Adapter input	I	5V/2.0A DC source input

3.2 Audio Interface

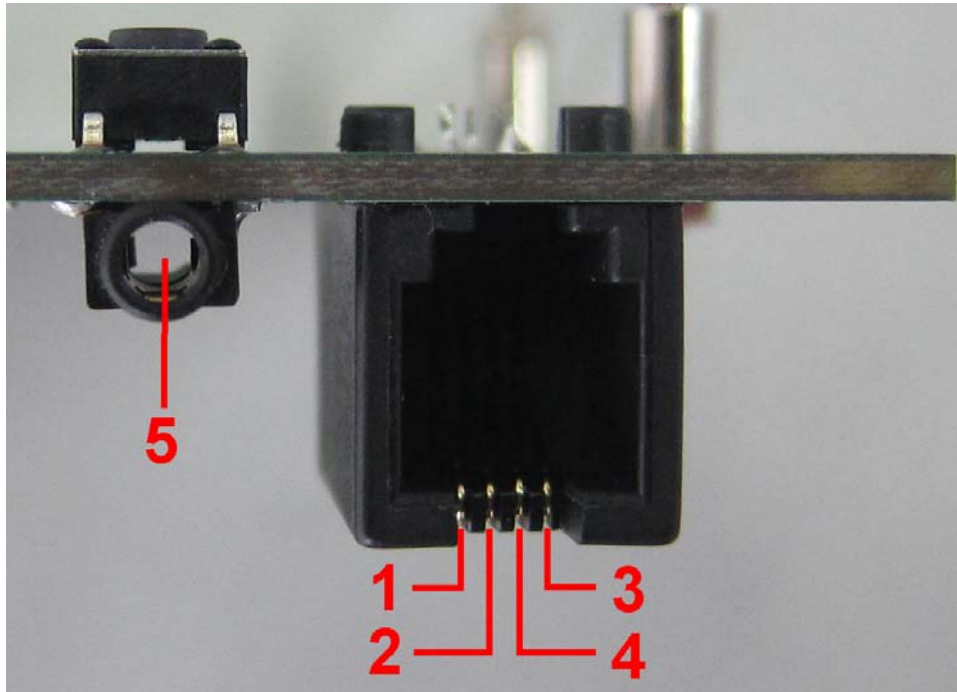


Figure 7: Audio interface

Headset interface:

Pin	Signal	I/O	Description
1	MIC1P	I	Positive microphone input
2	SPK1P	O	Positive receiver output
3	MIC1N	I	Negative microphone input
4	SPK1N	O	Negative receiver output

Earphone interface:

Pin	Signal	Input/Output	Description
5	MIC2P&SPK2P	I/O	Auxiliary audio input/output

3.3 SIM Card Interface

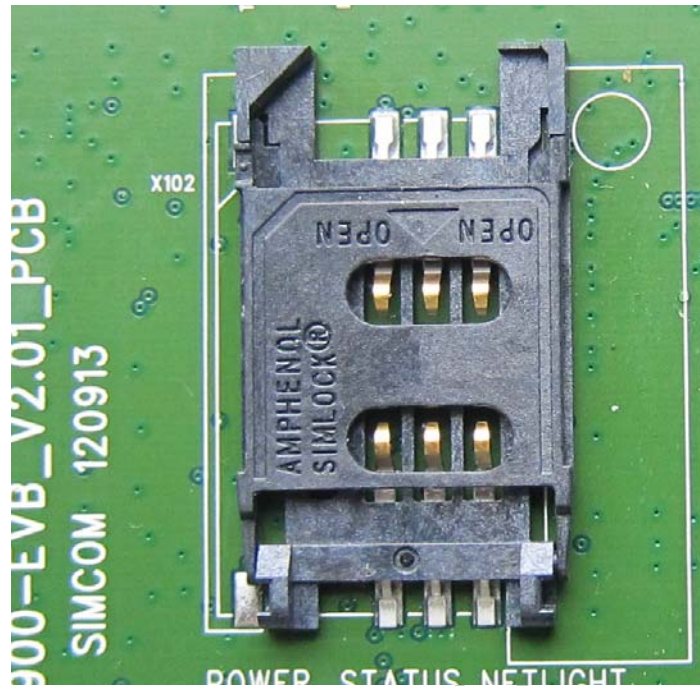


Figure 8: SIM card interface

3.4 Serial Port Interface

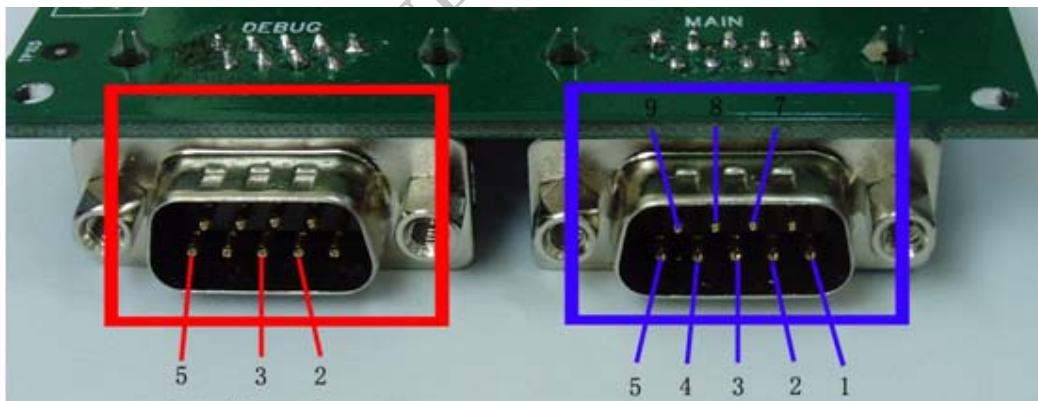


Figure 9: Serial port Interface

Serial Port 1——MAIN Interface

Serial Port 2——DEBUG Interface

Main Interface:

Pin	Signal	I/O	Description
1	DCD	O	Data carrier detection
2	TXD	O	Transmit data
3	RXD	I	Receive data
4	DTR	I	Data Terminal Ready
5	GND		GND
7	RTS	I	Request to Send
8	CTS	O	Clear to Send
9	RI	O	Ring Indicator

Debug Interface:

Pin	Signal	I/O	Description
2	DEBUG_TX	O	Transmit data
3	DEBUG_RX	I	Receive data
5	GND		GND

3.5 LED Indicator

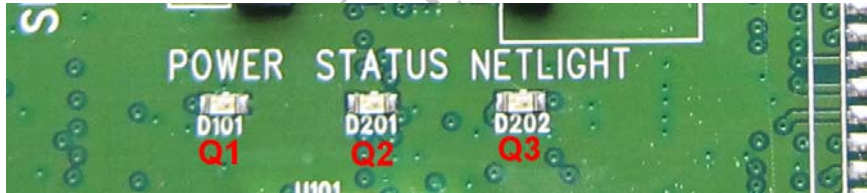


Figure 10: LED Indicator

Working state of LED as list:

Name	Description	STATUS
Q1	Power ON/OFF indicator	Bright: EVB Power ON; Extinct: EVB Power OFF
Q2	Module status indicator	Bright: Module runs normally Extinct: System is powered down
Q3	GSM_NET status indicator	Blinking at a certain frequency according various GSM net status

3.6 Test Interface

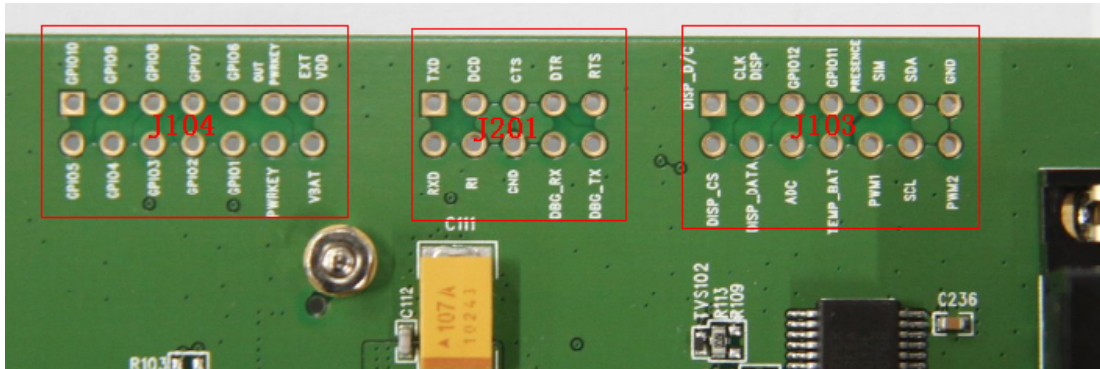


Figure 11: Test interface overview

3.6.1. J103

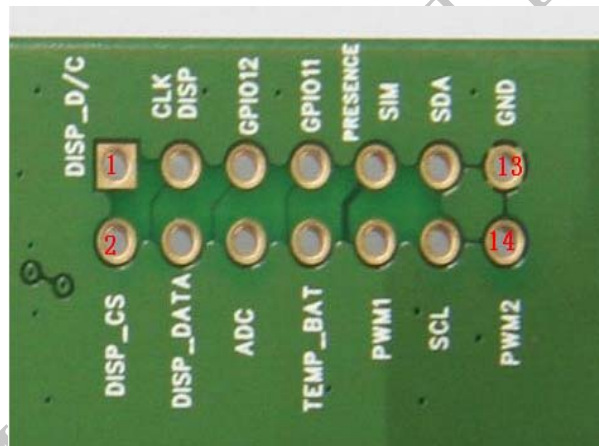


Figure 12: J103 interface

J103 Interface Pin list:

Pin	Signal	I/O	Description
1	DISP_D/C	O	Display data or address select
2	DISP_CS	O	Display select output
3	DISP_RST	O	Display reset
4	DISP_DI	I	Display data output
5	GPIO0_PWM	I/O	GPIO
6	ADC	I	ADC input
7	GPIO	I/O	GPIO
8	BPI_BIS1	O	RF synchronizing signal
9	SIMPRESENCE	I	SIM detect input
10	DISP_CLK	O	Display clock output

11	SDA28	I/O	I2C BUS DATA
12	SCL	I/O	I2C BUS CLOCK
13	GND	/	GND
14	DISP_DA	O	Display data input

Note: if customers use SIM800H-TE/SIM800L-TE, test point actual function please refers to the table "J103 Interface Pin List"

3.6.2. J201

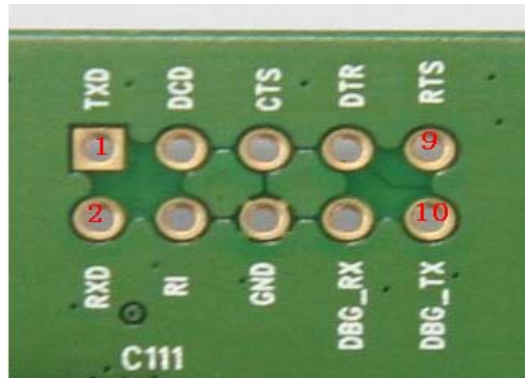


Figure 13: J201 Interface

J201 Interface Pin List:

Pin	Signal	I/O	Description
1	TXD	O	Transmit data
2	RXD	I	Receive data
3	DCD	O	Data carrier detection
4	RI	O	Ring Indicator
5	CTS	O	Clear to Send
6	GND	/	GND
7	DTR	I	Data Terminal Ready
8	DEBUG_RX	I	Receive data
9	RTS	I	Request to Send
10	DEBUG_TX	O	Transmit data

3.6.3. J104

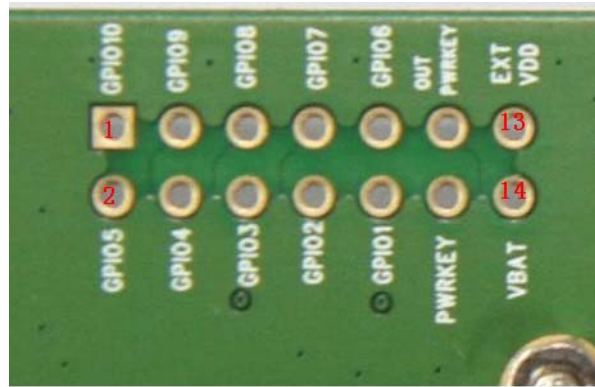


Figure 14: J104 Interface

J104 Interface Pin List:

Pin	Signal	I/O	Description
1	GPIO/COL0	I/O	GPIO, keypad column
2	GPIO/COL1	I/O	GPIO, keypad column
3	GPIO/COL2	I/O	GPIO, keypad column
4	GPIO/COL3	I/O	GPIO, keypad column
5	GPIO/COL4	I/O	GPIO, keypad column
6	GPIO/ROW0	I/O	GPIO, keypad row
7	GPIO/ROW1	I/O	GPIO, keypad row
8	GPIO/ROW2	I/O	GPIO, keypad row
9	GPIO/ROW3	I/O	GPIO, keypad row
10	GPIO/ROW4	I/O	GPIO, keypad row
11	PWRKEY_OUT	O	NC
12	PWRKEY	I	POWER KEY
13	VDD_EXT	POWER	VEXT
14	VBAT	POWER	POWER

4 Illustration:

4.1 Turn on Module:

- (1) Keep S101, S102 and S105 at 'OFF' state, connect the Module-TE to the 60pins connector on SIM900 EVB, plug in 5V DC adapter, switch S105 to 'ON' state;.
- (2) Press the S103 (PWRKEY) for more than 1 second and then release, the module will power on.

After the module is powered on, the LED D202 will flash at a certain frequency. Through the state of LED (D202), you can judge registering status of the module. For detailed description, please refer to the module HD spec.

Note: You should equip four sets of screws for better grounding to achieve a better performance.

4.2 Turn off Module

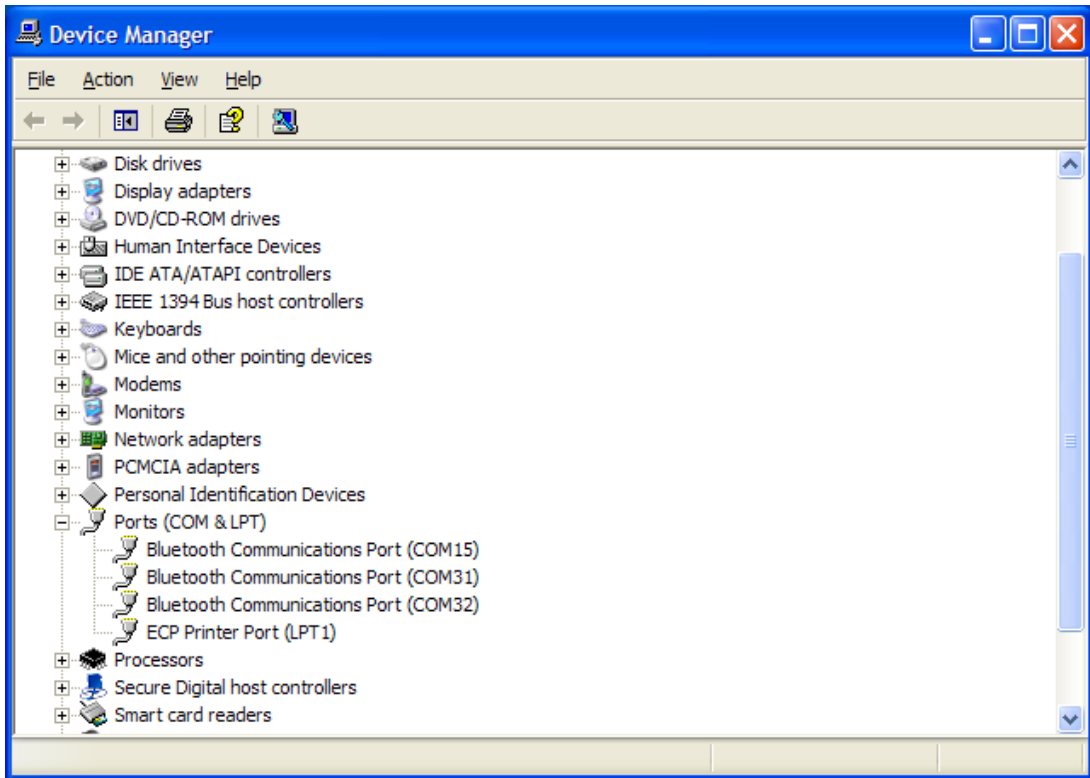
Press the S103 (PWRKEY) for about 2 seconds, the module will be turned off. After the module is turned off, the LED D201 and D202 will be off.

4.3 Registering Network and Making a Call

- (1) Connect the antenna to the Module-TE, insert SIM card and earphone.
- (2) Connect the serial port cable to the MAIN serial port; Open the Hyper Terminal (AT command windows) on your computer.

First, check the serial port number:

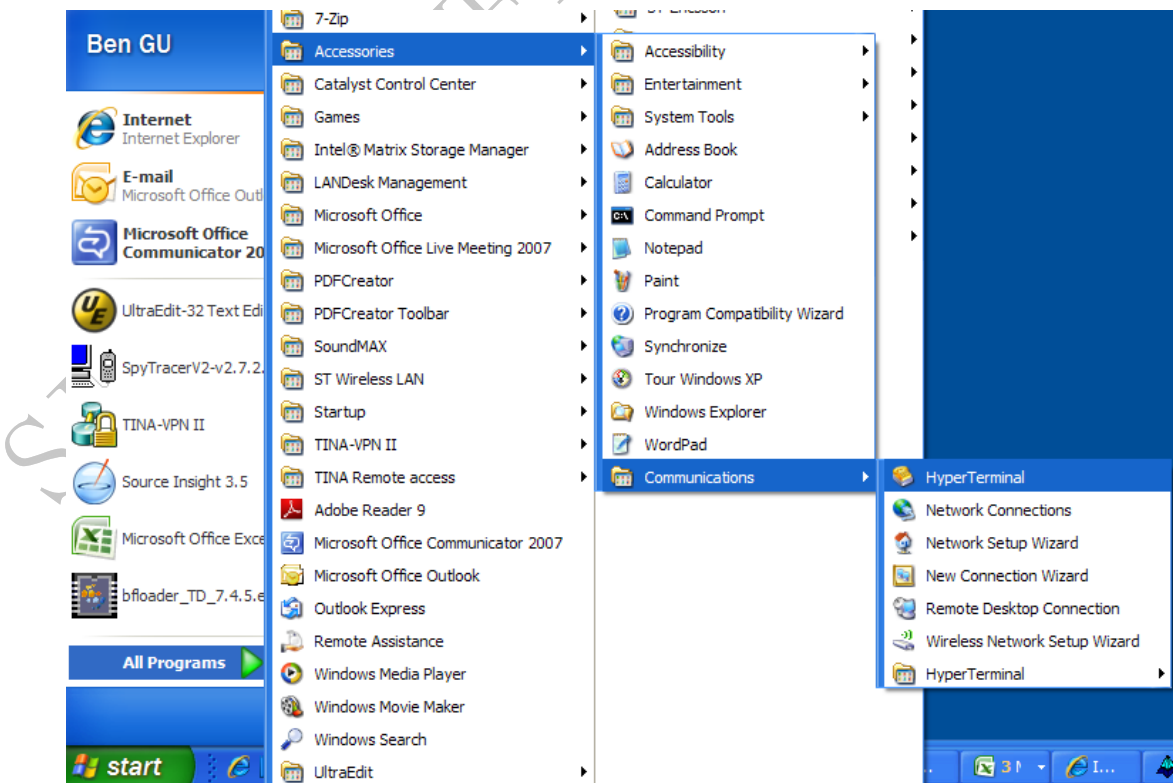
My computer (right click) → Manage → Device Manager → Ports (COM&LPT)

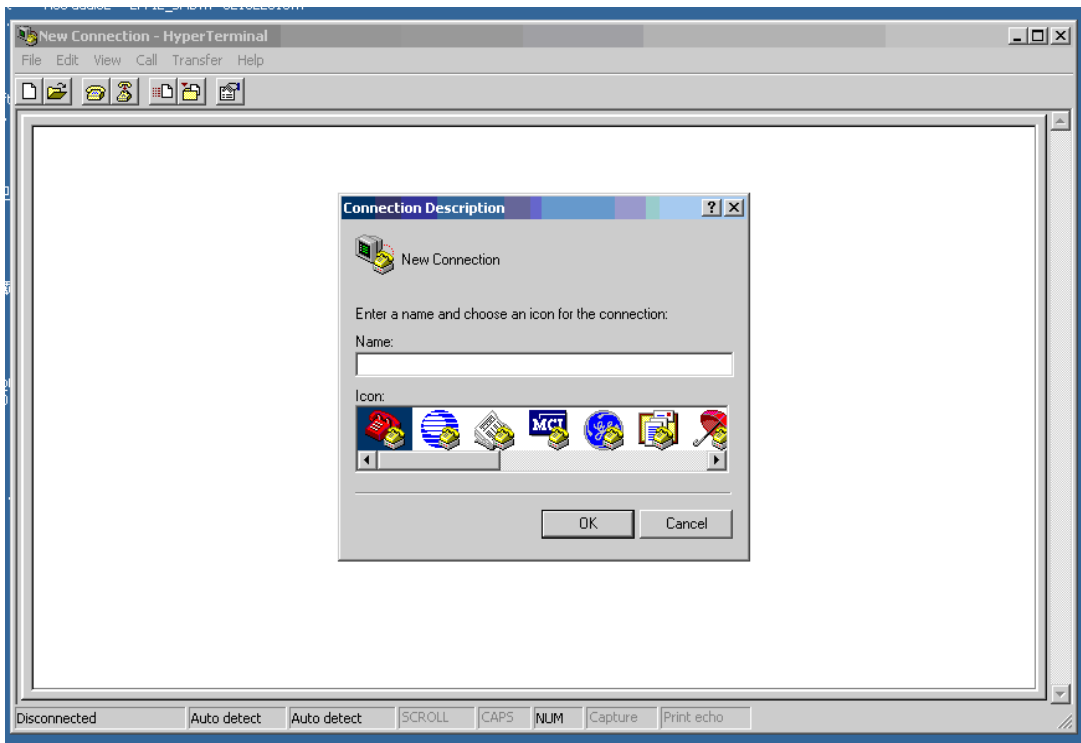


Second, use the Hyper Terminal to call the module as following:

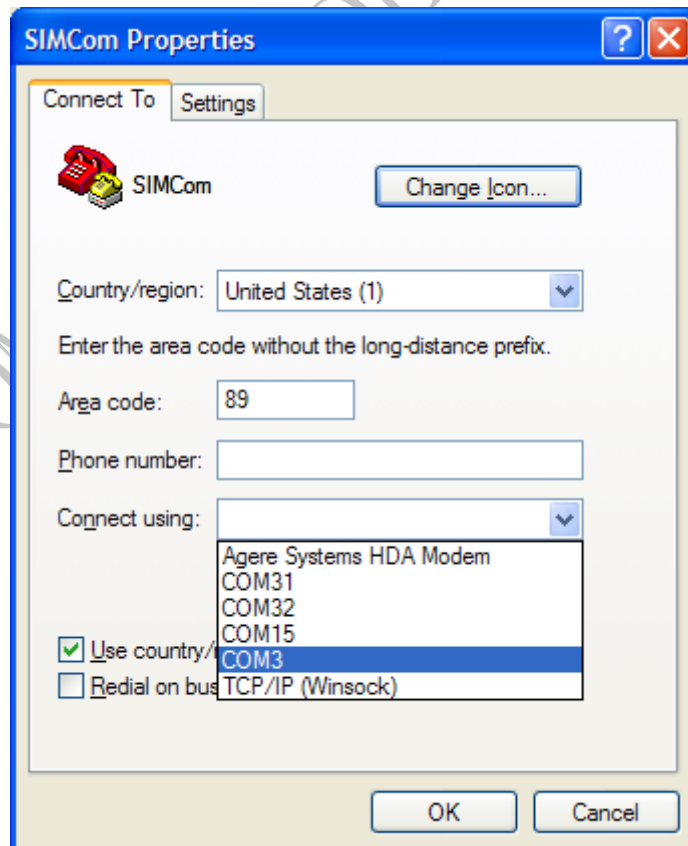
a) **Open the HyperTerminal**

START → All Programs → Accessory → Communication → HyperTerminal.

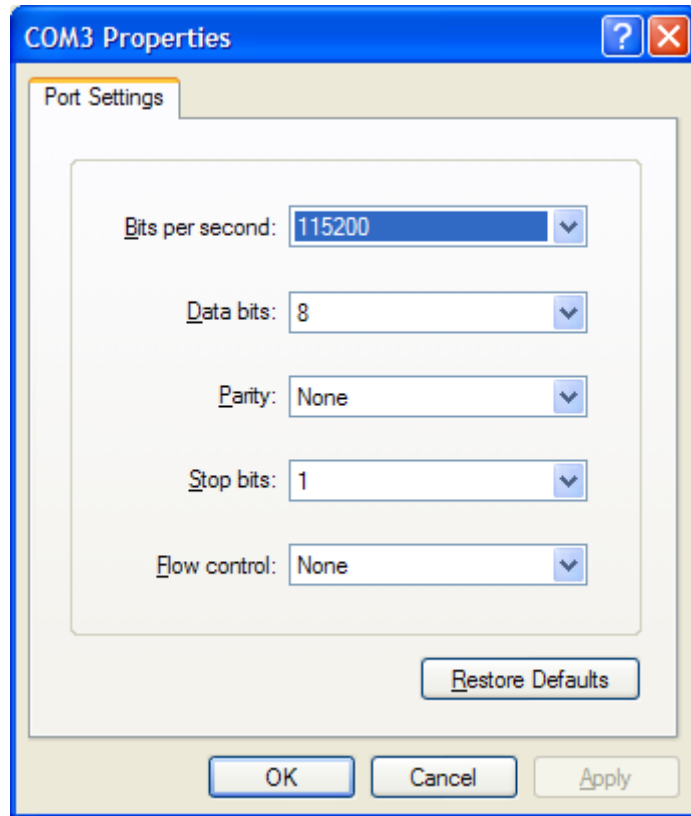




b) Configure the serial port number



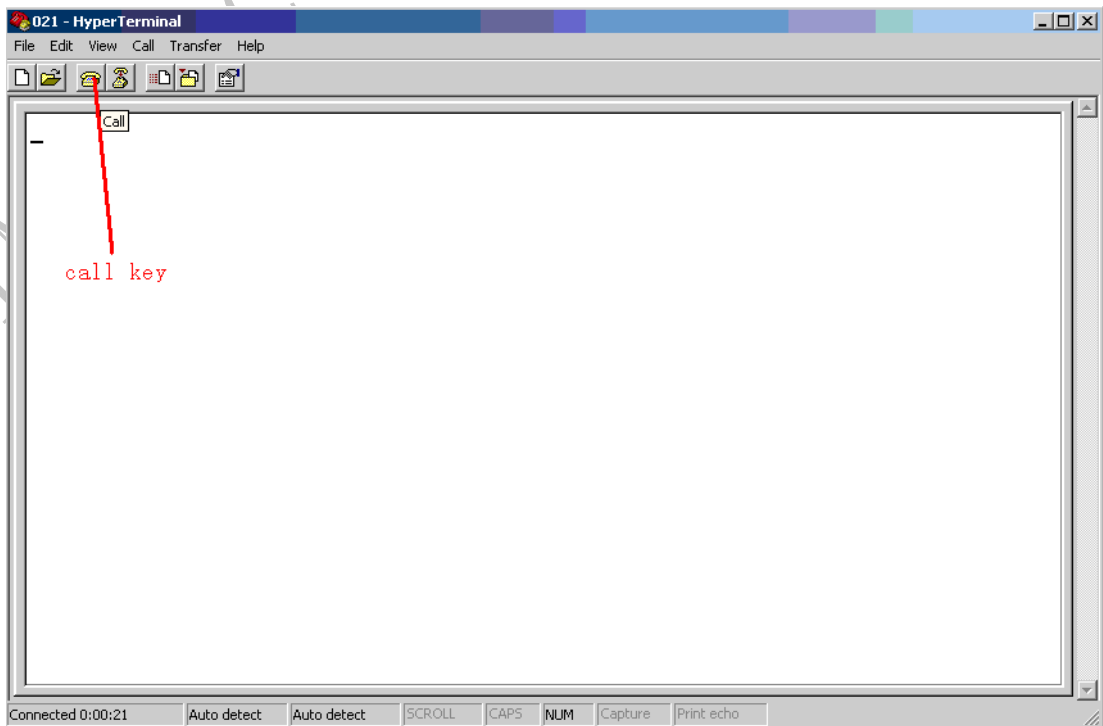
c) Set the baud rate and flow control



User can set the baud rate from 1200bps to 115200bps, and the flow control set to 'None'

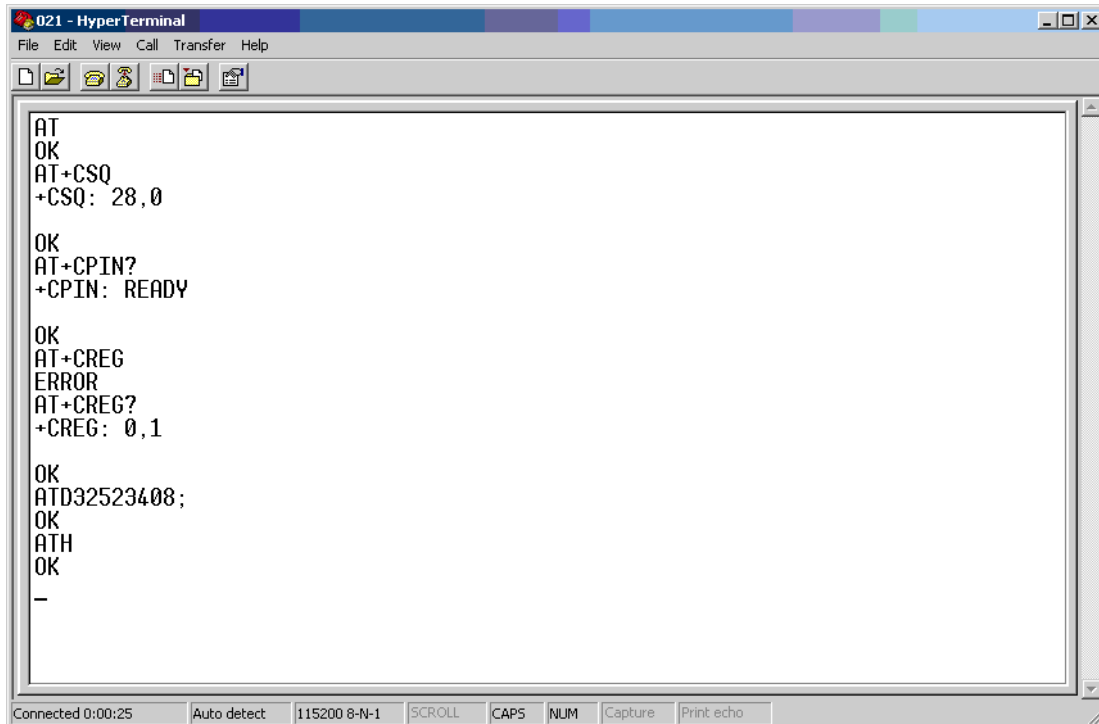
(3) Act on the step of running which mentioned above, power on the module, typing the AT command in the HyperTerminal, and then the module will execute its corresponding function.

a) Connect the module



Click the 'call' icon.

- b) Typing the AT command. When module is powered on with autobauding enabled, user must firstly send 'AT' to synchronize the baud rate. The default setting of the module is autobauding.
- c) Use AT command to make a call.



021 - HyperTerminal

File Edit View Call Transfer Help

```

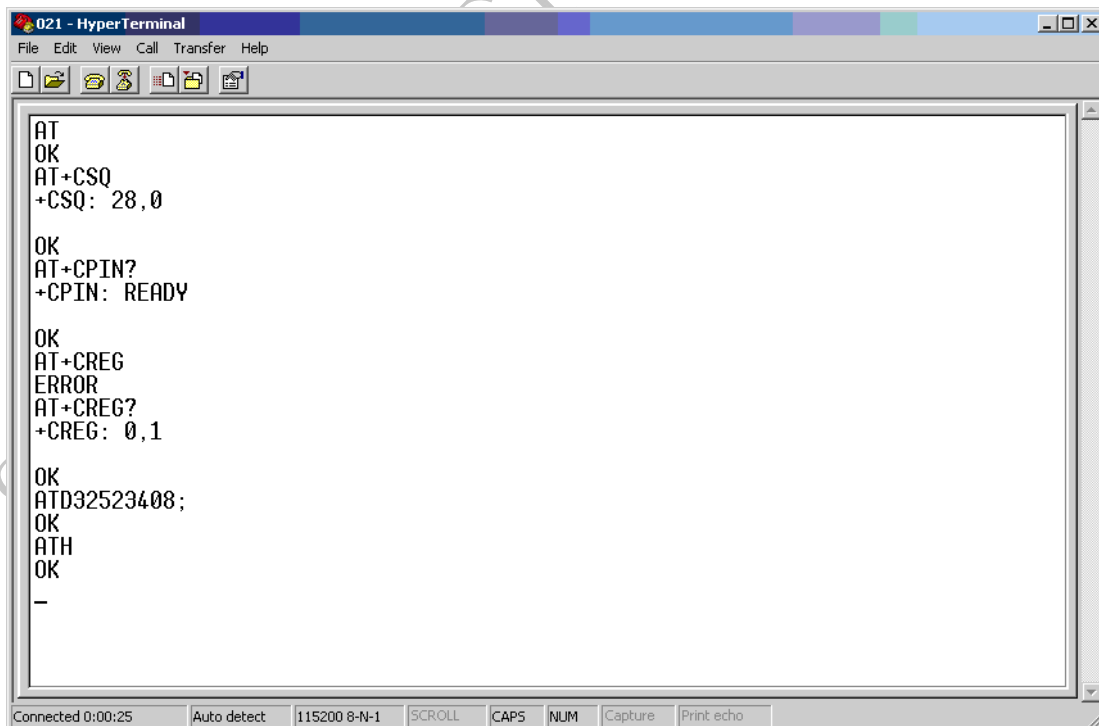
AT
OK
AT+CSQ
+CSQ: 28,0

OK
AT+CPIN?
+CPIN: READY

OK
AT+CREG
ERROR
AT+CREG?
+CREG: 0,1

OK
ATD32523408;
OK
ATH
OK
-
    
```

Connected 0:00:25 Auto detect 115200 8-N-1 SCROLL CAPS NUM Capture Print echo



021 - HyperTerminal

File Edit View Call Transfer Help

```

AT
OK
AT+CSQ
+CSQ: 28,0

OK
AT+CPIN?
+CPIN: READY

OK
AT+CREG
ERROR
AT+CREG?
+CREG: 0,1

OK
ATD32523408;
OK
ATH
OK
-
    
```

Connected 0:00:25 Auto detect 115200 8-N-1 SCROLL CAPS NUM Capture Print echo

4.4 Software Upgrade

Customer could upgrade module's firmware through USB or UART interface.

1) Upgrade module's firmware through USB port

- Keep S101, S102 and S105 at 'OFF' state, connect the Module-TE to the 60pins connector on SIM900 EVB;
- Plug in 5V DC adapter to EVB, switch S105 to 'ON' state; keep S101 and S102 at 'OFF' state;
- Connect SIM800H/L-TE module to pc through USB cable;
- Insert the USB will be prompted to install the driver for the first time;
- Open the upgrade tool, click "Start All" button;
- Again insert the USB, the upgrade tool will automatically enter the upgrade process;

Note : Must be properly installed MTK chip driver.

2) Upgrade module's firmware through UART port

- Keep S101, S102 and S105 at 'OFF' state, connect the Module-TE to the 60pins connector on SIM900 EVB;
- Plug in 5V DC adapter to EVB;
- Connect EVB MAIN UART port and the PC USB port through the USB-to-RS232 cable;
- Open the upgrade tool, click 'Start All' button after configuration options
- Switch S105 and S102 to 'On' state, the upgrade tool will automatically enter the upgrade process.

Contact us:

Shanghai SIMCom Wireless Solutions Co.,Ltd.

Address: Building A, SIM Technology Building, No. 633, Jinzhong Road, Shanghai,
P. R. China 200335

Tel: +86 21 3252 3300

Fax: +86 21 3252 2030

URL: www.sim.com/wm

SIMCOM CONFIDENTIAL FILE

The Netherlands



Elektrostraat 17
NL-7483 PG Haaksbergen

T: +31 (0)53 573 33 33
F: +31 (0)53 573 33 30
E: nl@texim-europe.com

Belgium



Zuiderlaan 14 bus 10
B-1731 Zellik

T: +32 (0)2 462 01 00
F: +32 (0)2 462 01 25
E: belgium@texim-europe.com

UK & Ireland



St. Mary's House, Church Lane
Carlton Le Moorland
Lincoln LN5 9HS

T: +44 (0)1522 789 555
F: +44 (0)845 299 22 26
E: uk@texim-europe.com

Germany North



Bahnhofstrasse 92
D-25451 Quickborn

T: +49 (0)4106 627 07-0
F: +49 (0)4106 627 07-20
E: germany@texim-europe.com

Germany South



Martin-Kollar-Strasse 9
D-81829 München

T: +49 (0)89 436 086-0
F: +49 (0)89 436 086-19
E: germany@texim-europe.com

Austria



Warwitzstrasse 9
A-5020 Salzburg

T: +43 (0)662 216 026
F: +43 (0)662 216 026-66
E: austria@texim-europe.com

Nordic region



Sdr. Jagtvej 12
DK-2970 Hørsholm

T: +45 88 20 26 30
F: +45 88 20 26 39
E: nordic@texim-europe.com

General information



info@texim-europe.com
www.texim-europe.com