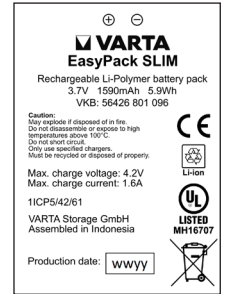
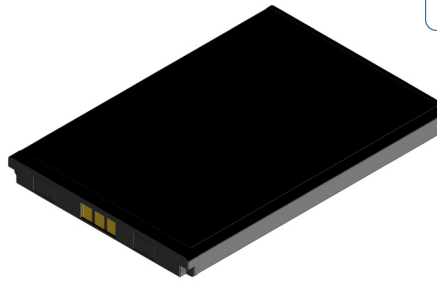


Product Information

1/LPP 454261 8TH PCM MM
EZPack SLIM ▶ VKB 56426 801 096



WW ▶ week two digits
YY ▶ year two digits

1. GENERAL

Battery with safety circuit and plastic metal combination

- Cell ▶ LPP 454261 8TH
- PCM ▶ Yes
- NTC ▶ 10kΩ ±1%; B-Value 3435K ±1%
- ID ▶ None
- Configuration ▶ 1P
- Weight ▶ appr. 34g

2. ELECTRICAL SPECIFICATION

- Rated Capacity ▶ 1530mAh min., 1590mAh typical
- Nominal Voltage ▶ 3.7V
- Watt-Hour Rating ▶ 5.9Wh
- Charging Method ▶ Constant Current + Constant Voltage
- Max. Charge Voltage: ▶ 4.2V (±50mV)
- Max. Continuous Charge Current: ▶ 1.6A (limited by PCM)
- Rec. Charge Cut Off: ▶ by current 50mA or time 2.5h
- Max. Continuous Discharge Current: ▶ 1.6A (limited by PCM)
- Rec. Discharge Cut Off: ▶ 3V
- Internal Impedance (1kHz): ▶ approx. 100mΩ fully charged
- Expected Cycle Life @ (1C/0.5C) @ 23 ±2°C ▶ 500 cycles ≥ 67% of initial cap.

CELL PROTECTION

- Overcharge Detection ▶ 4.275V ±0.25V (0.7 to 1.3sec. delay, resume 4.275V ±0.25V)
- Overdischarge Detection: ▶ 2.3V ±0.58V (14 to 26msec. delay, resume 2.3V ±0.58V)
- Overcurrent Detection ▶ discharge: 1.7A to 4.5A (11 to 21msec. delay)
charge: 1.6A to 5A (8 to 16 msec. delay)

3. AMBIENT CONDITIONS

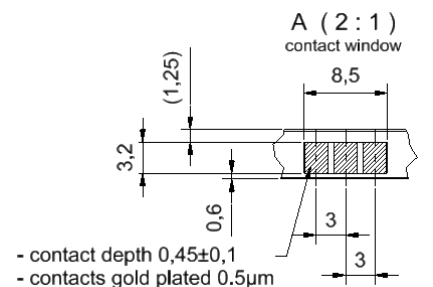
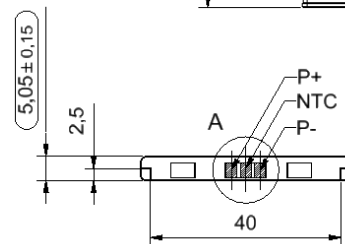
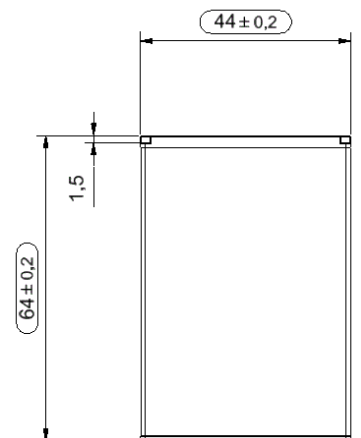
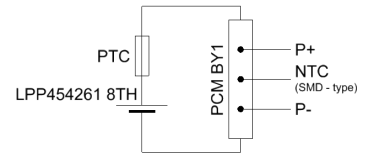
- Temperature Range
 - Charge ▶ 0 to +45°C
 - Discharge ▶ -20 to +55°C
 - Charge Retention/Storage ▶ 1 month at -10 to +45°C >85%
 - Humidity ▶ 65 ± 20%RH

4. ENVIRONMENTAL AND SAFETY

Please follow VARTA Handling and Safety Precautions for Lilon & LiPolymer.
The cell is approved according UL1642 and UN 38.3 certified.
This battery meets the requirements of Battery Directives and the battery parts are RoHS-Compliant.
This battery is UL 2054 listed and certified according to IEC 62133 edition 2.

Minimum Order Quantity: 300 pcs / Order Multiples: 150 pcs - Product for OEM customers only!

Protection Circuit Module



The Netherlands



Elektrostraat 17
NL-7483 PG Haaksbergen

T: +31 (0)53 573 33 33
F: +31 (0)53 573 33 30
E: nl@texim-europe.com

Belgium



Zuiderlaan 14 bus 10
B-1731 Zellik

T: +32 (0)2 462 01 00
F: +32 (0)2 462 01 25
E: belgium@texim-europe.com

UK & Ireland



St. Mary's House, Church Lane
Carlton Le Moorland
Lincoln LN5 9HS

T: +44 (0)1522 789 555
F: +44 (0)845 299 22 26
E: uk@texim-europe.com

Germany North



Bahnhofstrasse 92
D-25451 Quickborn

T: +49 (0)4106 627 07-0
F: +49 (0)4106 627 07-20
E: germany@texim-europe.com

Germany South



Martin-Kollar-Strasse 9
D-81829 München

T: +49 (0)89 436 086-0
F: +49 (0)89 436 086-19
E: germany@texim-europe.com

Austria



Warwitzstrasse 9
A-5020 Salzburg

T: +43 (0)662 216 026
F: +43 (0)662 216 026-66
E: austria@texim-europe.com

Nordic region



Sdr. Jagtvej 12
DK-2970 Hørsholm

T: +45 88 20 26 30
F: +45 88 20 26 39
E: nordic@texim-europe.com

General information



info@texim-europe.com
www.texim-europe.com