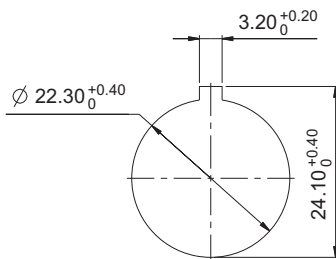
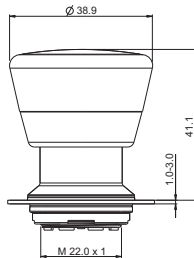




NEW



Panel cut-out to IEC 60947-5-1

Approvals



IEC 60947-5-x



UL 508 in preparation



RAFIX 22 FSR Emergency stop pushbuttons

→ The emergency stop pushbuttons comply with IEC 60 947, and VDE 0113 part 1. The positively guided mechanical movement of the pushbuttons makes them dupe-proof according to DIN EN ISO 13850. To prevent accidental actuation, the pushbutton has a pressure point which must be pressed first before the pushbutton snaps into place in the pressed position. The emergency stop pushbutton is non-blocking thanks to the actuator's design. For example, an initiated emergency stop procedure cannot be interrupted by jammed objects. Use only with an emergency stop contact block.

Original manual, see Appendix.

Preliminary technical data

Due to increasing application experience the specifications of this product are successively added. For current status, see RAFI online catalog at www.rafi.de.

Technical Data

→ General information

Form of lens	conical mushroom form
Color of lens	red
Form of collar	round

→ Dimensions

Mushroom Diameter	37.5 mm
Overall height	41.1 mm
Mounting hole	22.3 mm
Key grid	40 x 40 mm

→ Mechanical design

Mounting	Metal threaded rings
Contact function	latching
Reset	by pulling
Illuminability	see order block
Torque for nut ring	1.2 Nm

→ Mechanical characteristics

Robustness max.	100 N
	750 N static










→ Other specifications

Degree of protection from front side	IP65 (DIN EN 60529); IP69K (ISO 20653)
Ambient temp. operating min.	-40 °C
Ambient temp. operating max.	+85 °C
Storage temperature min.	-40 °C
Storage temperature max.	+85 °C
Environmental resistance	acc. to IEC 60068-2-14, -30, -33 and -78
Salt spray	IEC 600 68-2-11
ROHS compliant	yes
REACH compliant	yes

CONTROL COMPONENTS

RAFIX 22 FSR - ACTUATORS

Accessories RAFIX 22 FSR - Emergency stop pushbutton

→ Description	Photo	Order no.	Additional accessories see page
Emergency stop label, Ø 22.3 mm		-	2 - 82, 2 - 149, 2 - 264, 5 - 21
RAFIX FS - Contact block PCB gold, E-Stop		-	2 - 244
RAFIX FS - Contact block PCB gold, E-Stop, with light conductor		-	2 - 243
RAFIX FS - Contact block PCB silver, E-Stop		-	2 - 249
RAFIX FS - Contact block PCB silver, E-Stop, with light conductor		-	2 - 248
RAFIX FS - Contact block QC gold, E-Stop, with light conductor		-	2 - 253
RAFIX FS - Contact block QC silver, E-Stop, with light conductor		-	2 - 257
Protective Collar for emergency stop RAFIX 22 QR / RAFIX 22 FSR		5.00.456.002/0000	2 - 150
Fixing spanner for ring nut		5.05.800.062/0000	2 - 145, 2 - 261, 5 - 25

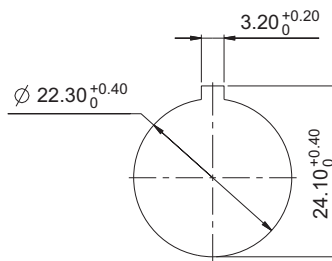
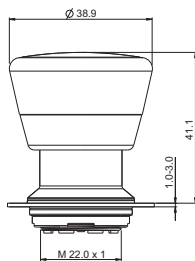
2

RAFIX 22 FSR Emergency stop pushbutton, metal mushroom



RAFIX
22 FSR

Technical data see page 2 - 212



Panel cut-out to IEC 60947-5-1

→ Illuminability	Degree of protection from front side	Order no.
yes, window white	IP65 (DIN EN 60529); IP69K (ISO 20653)	1.30.283.111/0300
no	IP65 (DIN EN 60529); IP69K (ISO 20653)	1.30.283.611/0300

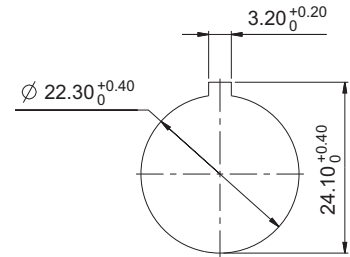
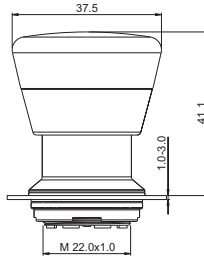
CONTROL COMPONENTS

RAFIX 22 FSR - ACTUATORS



RAFIX 22 FSR Emergency stop pushbutton, plastic mushroom

Technical data see page 2 - 212



Panel cut-out to IEC 60947-5-1

→ Illuminability	Degree of protection from front side	Order no.
yes, window white	IP65 (DIN EN 60529); IP69K (ISO 20653)	1.30.283.101/0300
no	IP65 (DIN EN 60529); IP69K (ISO 20653)	1.30.283.601/0300

2

RAFIX
22 FSR

DISTRIBUTED BY TEXIM EUROPE

The Netherlands



Elektrostraat 17
NL-7483 PG Haaksbergen

T: +31 (0)53 573 33 33
F: +31 (0)53 573 33 30
E: nl@texim-europe.com

Belgium



Zuiderlaan 14 bus 10
B-1731 Zellik

T: +32 (0)2 462 01 00
F: +32 (0)2 462 01 25
E: belgium@texim-europe.com

UK & Ireland



St. Mary's House, Church Lane
Carlton Le Moorland
Lincoln LN5 9HS

T: +44 (0)1522 789 555
F: +44 (0)845 299 22 26
E: uk@texim-europe.com

Germany North



Bahnhofstrasse 92
D-25451 Quickborn

T: +49 (0)4106 627 07-0
F: +49 (0)4106 627 07-20
E: germany@texim-europe.com

Germany South



Martin-Kollar-Strasse 9
D-81829 München

T: +49 (0)89 436 086-0
F: +49 (0)89 436 086-19
E: germany@texim-europe.com

Austria



Warwitzstrasse 9
A-5020 Salzburg

T: +43 (0)662 216 026
F: +43 (0)662 216 026-66
E: austria@texim-europe.com

Nordic region



Sdr. Jagtvej 12
DK-2970 Hørsholm

T: +45 88 20 26 30
F: +45 88 20 26 39
E: nordic@texim-europe.com

General information



info@texim-europe.com
www.texim-europe.com