

2J0104-C885G

CELLULAR Connector Mount

Key Features

CELLULAR

- 824-960 MHz

- 1710-2170 MHz

Connector Mount

Low Profile

Ground Plane Dependent

Dimensions 48 x Ø 9 mm



1. Antenna and electrical specifications

Parameters	CELLULAR Antenna	
Standards	2G and 3G	
Band (MHz)	850/900	1700/1800/1900/2100
Frequency (MHz)	824-960	1710-2170
Return Loss (dB)	~-7.3	~-8.2
VSWR	~2.6:1	~2.3:1
Efficiency (%)	~66.7	~63.3
Peak Gain (dBi)	~1.0	~1.0
Average Gain (dB)	~-1.8	~-2.0
Impedance (Ohm)	50	
Polarisation	Linear	
Radiation Pattern	Omni-Directional	
Max. Input Power (W)	25	
Connector Type	SMA-Male Standard	

Antenna Measurement Conditions:

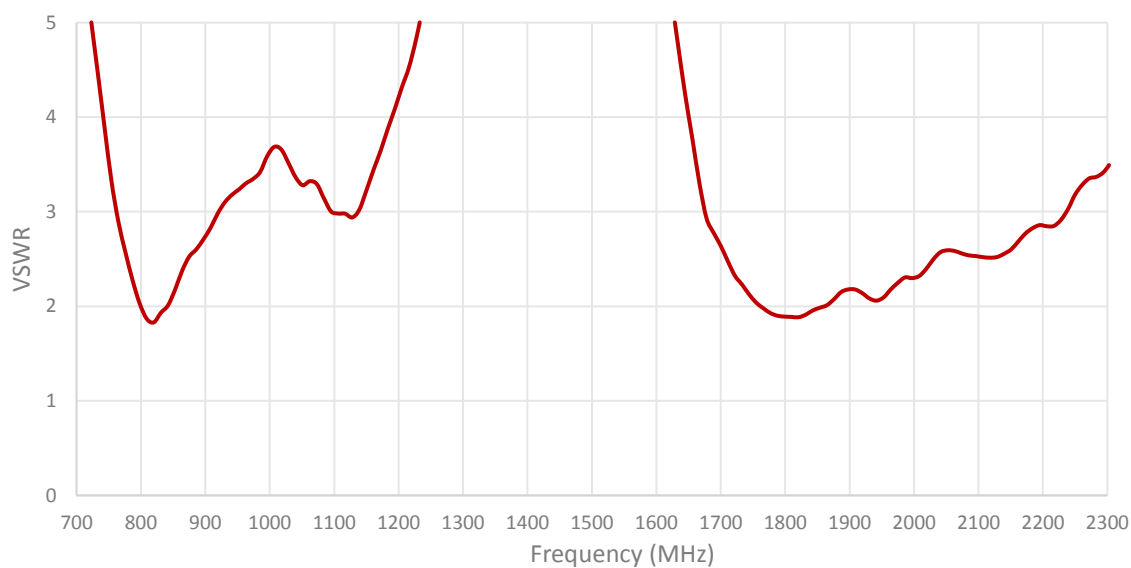
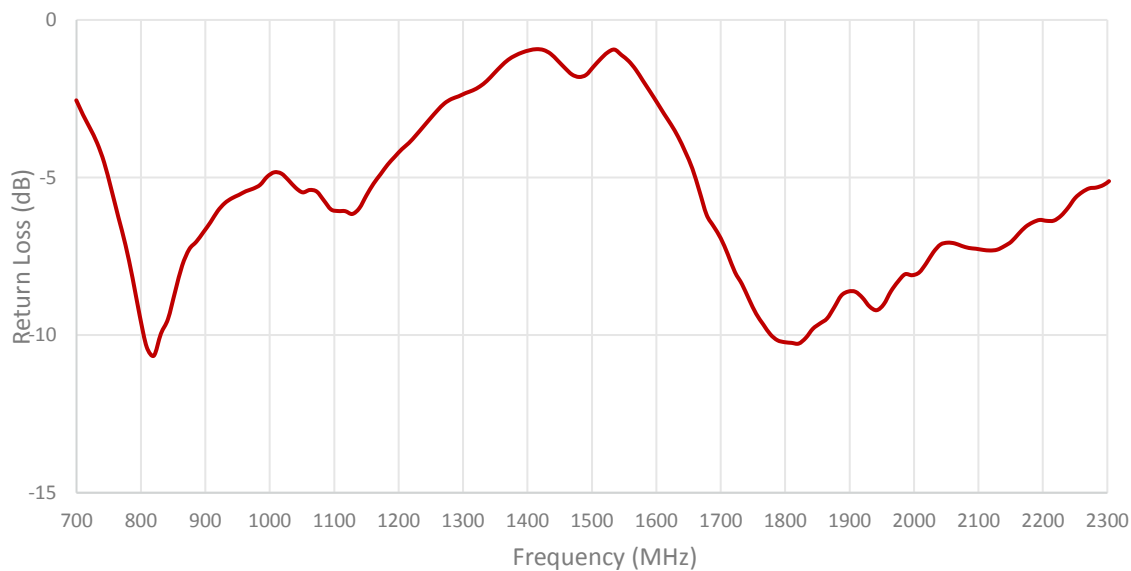
Mounted on Ground Plane of 95 x 40 mm

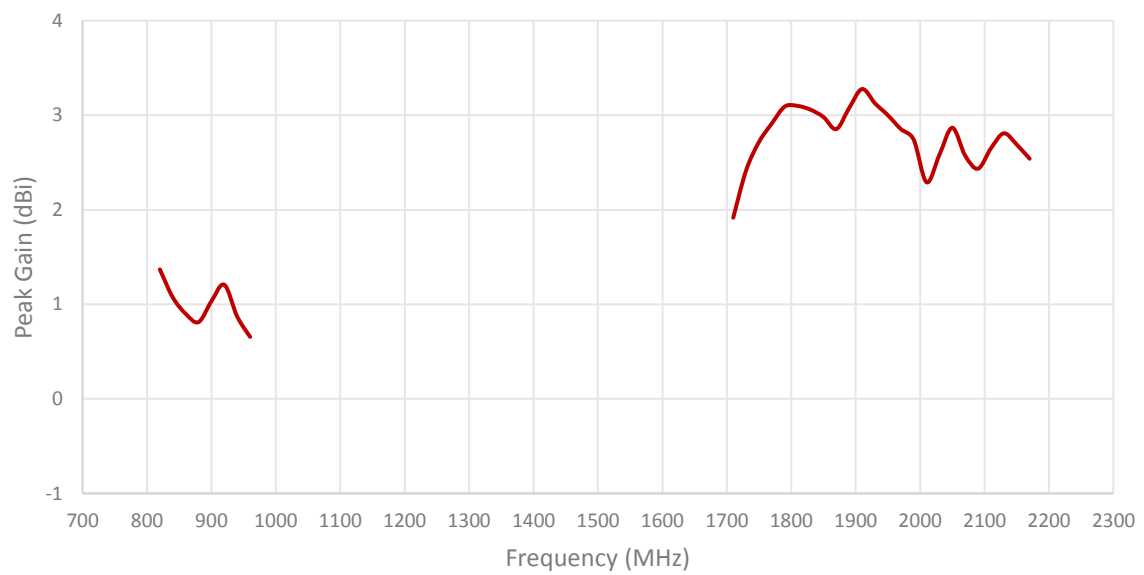
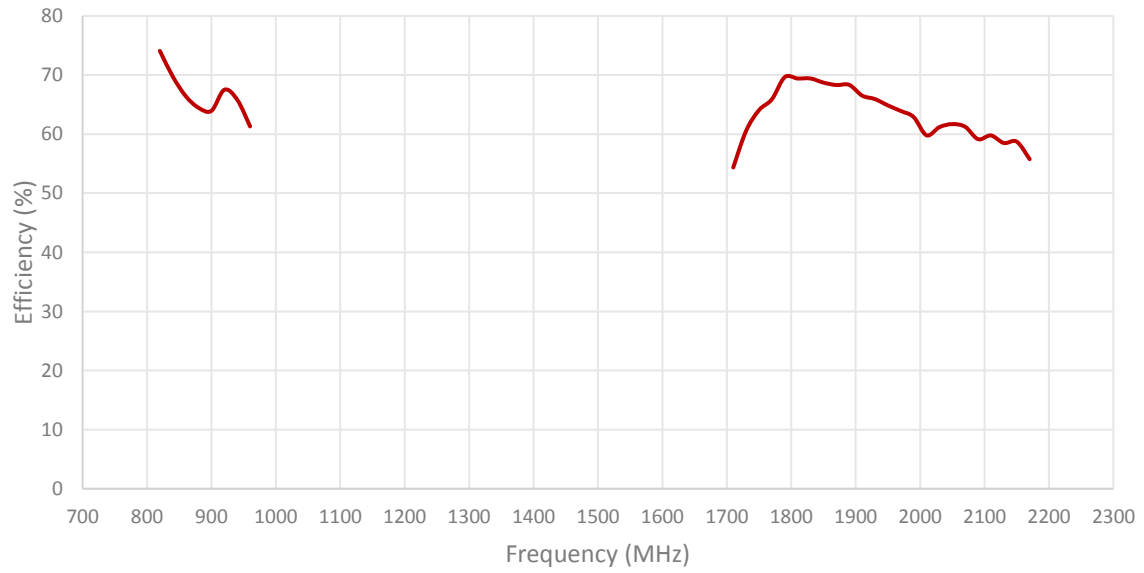
Measured in Certified CTIA 3D Anechoic Chamber

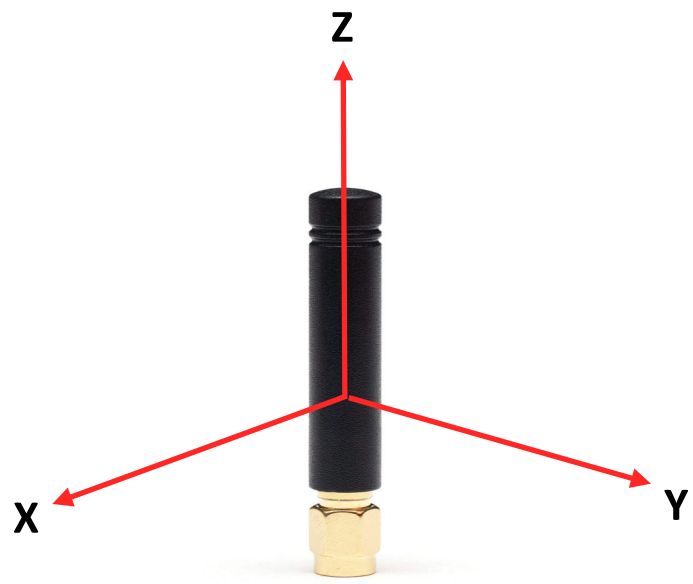
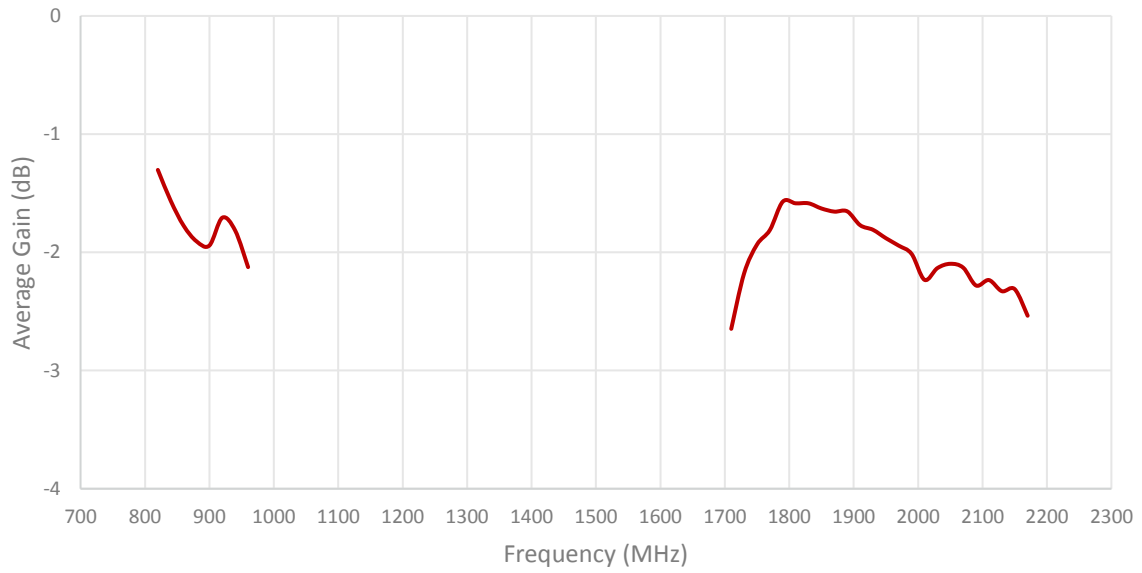
2. Mechanical and environmental specifications

Specifications	2J0104-C885G
Mounting Type	Connector Mount
Dimensions (mm)	48 x Ø 9
Radome	ABS UV Stable
Radome color	Black
Operating Temperature (C)	-40 to +85
Storage Temperature (C)	-40 to +85
Substance Compliance	RoHS

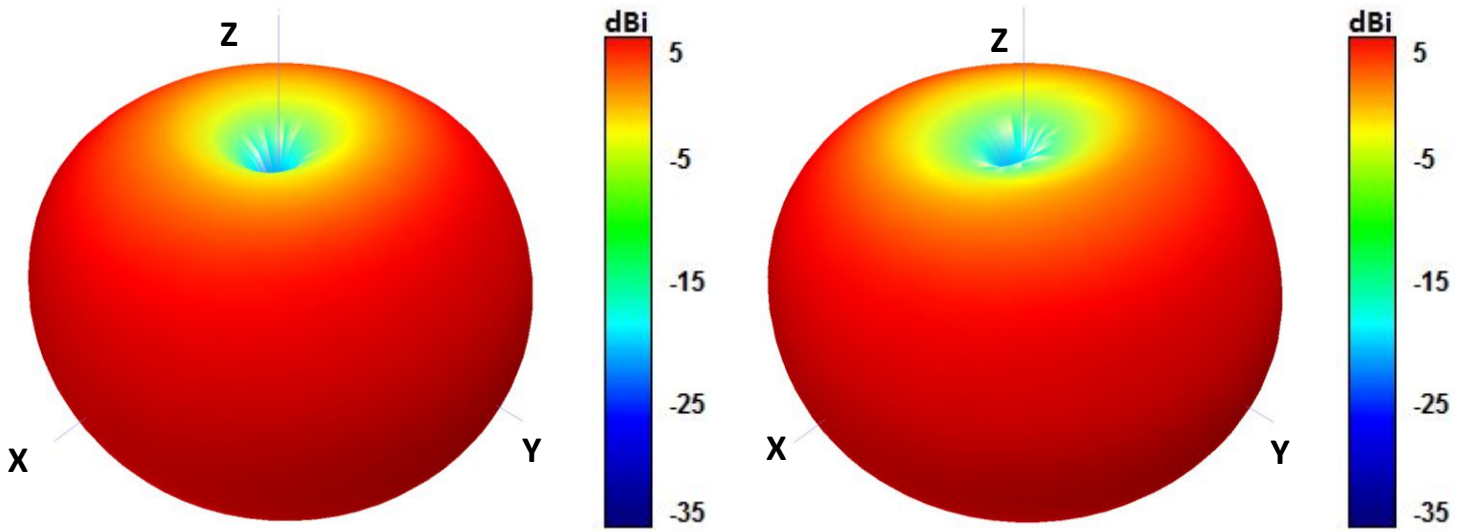
3. Antenna parameters



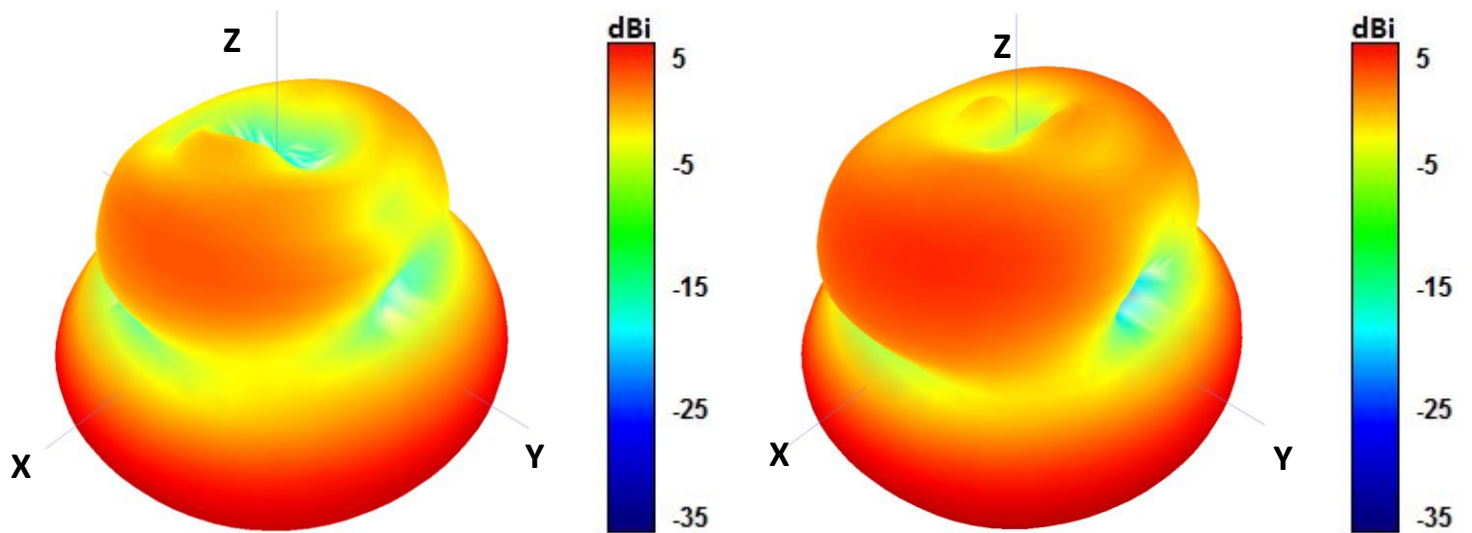




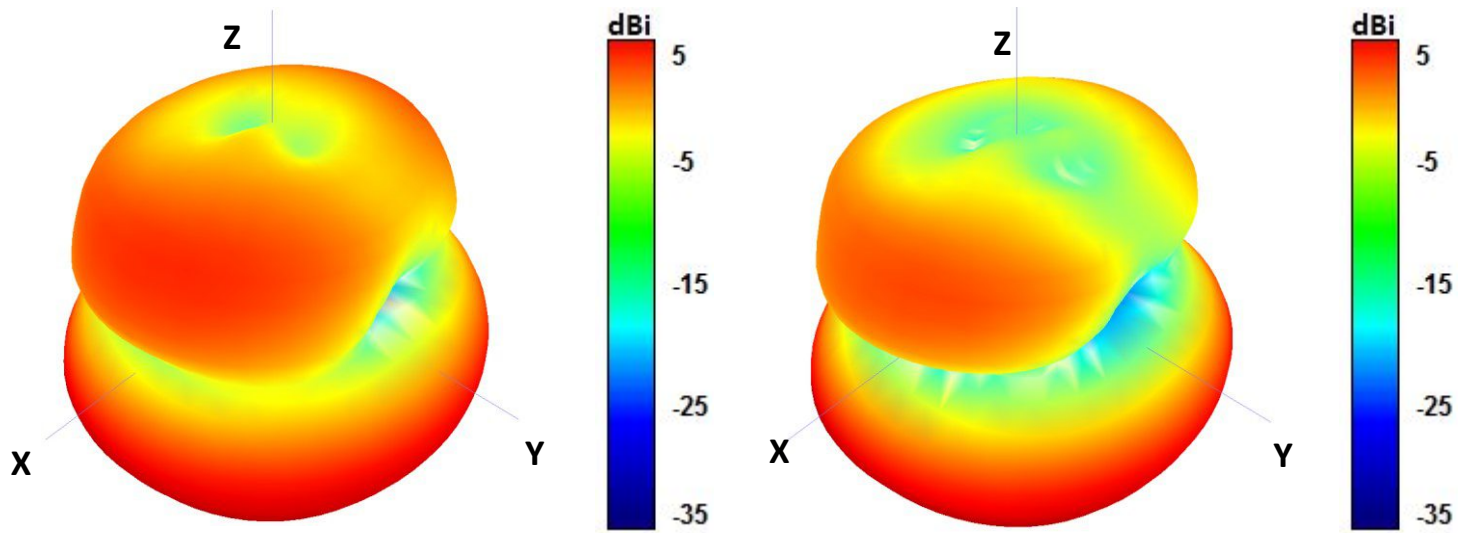
Radiation pattern reference



850 and 940 MHz Radiation pattern

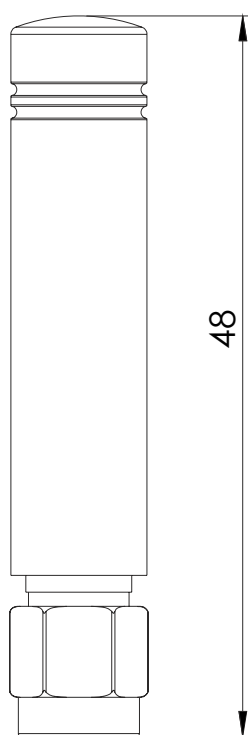
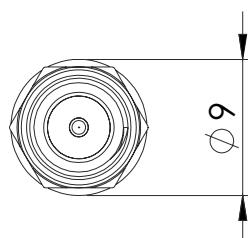


1750 and 1850 MHz Radiation pattern



1950 and 2100 MHz Radiation pattern

4. Antenna drawings



5. Antenna Images

