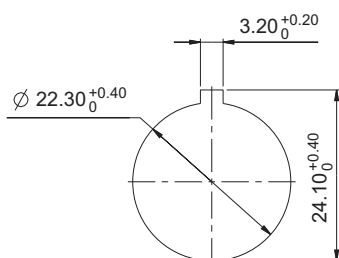


# CONTROL COMPONENTS

RAFIX 22 FS<sup>+</sup> - ACTUATORS



Panel cut-out to IEC 60947-5-1

## RAFIX 22 FS<sup>+</sup> Emergency stop pushbuttons

→ The emergency stop pushbuttons comply with IEC 60 947 and VDE 0113 Part 1.

They are designed dupe-proof according to EN 418 with a positive mechanical movement sequence. A certain operating force must be exerted at the action point in order to prevent inadvertent operation. The pushbutton latches when pressed.

The special shape of the actuator prevents the emergency stop pushbutton from being blocked. This means that the emergency stop process - once initiated - cannot be impeded by any jamming objects.

Please only combine with „emergency stop“ contact blocks.  
Original operating instructions see Appendix.

### Technical Data

#### → General information

Form of lens	conical mushroom form
Color of lens	red
Form of collar	round

#### → Dimensions

Mushroom Diameter	30 mm
Overall height	see order block
Mounting depth	PCB 9.2 mm, QC 27 mm
Mounting hole	22.3 mm
Diameter of collar	see order block

#### → Mechanical design

Mounting	ring nut
Contact function	latching
Illuminability	see order block
Reset	see order block
Torque for nut ring	1.2 Nm

#### → Mechanical characteristics

Robustness max.	100 N
-----------------	-------

#### → Other specifications

Ambient temp. operating min.	-25 °C
Ambient temp. operating max.	+70 °C
Robustness	acc. to IEC 600 68-2-3 und 2-30
Storage temperature min.	-40 °C
Storage temperature max.	+80 °C
Operating life (operations)	50,000
B10	65,000
Degree of protection from front side	see order block
Environmental resistance	acc. to IEC 60068-2-14, -30, -33 and -78
Salt spray	IEC 600 68-2-11
ROHS compliant	yes
REACH compliant	yes

2

RAFIX  
22 FS<sup>+</sup>

### Approvals












IEC 60947-5-x



UL 508 (rotation)  
UL 508  
in preparation  
(pulling)



### Accessories RAFIX 22 FS<sup>+</sup> - Emergency stop pushbutton

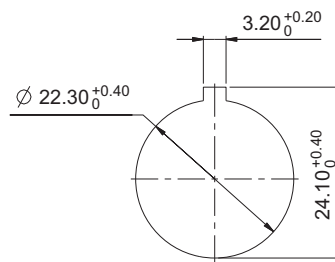
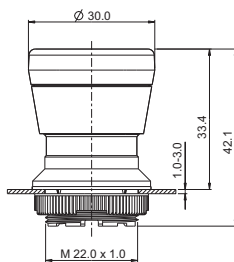
→ Description	Photo	Order no.	Additional accessories see page
Emergency stop label, Ø 22.3 mm		-	2 - 82, 2 - 149, 2 - 264, 5 - 21
RAFIX FS - Contact block PCB gold, E-Stop		-	2 - 244
RAFIX FS - Contact block PCB gold, E-Stop, with light conductor		-	2 - 243
RAFIX FS - Contact block PCB silver, E-Stop		-	2 - 249
RAFIX FS - Contact block PCB silver, E-Stop, with light conductor		-	2 - 248
RAFIX FS - Contact block QC gold, E-Stop, with light conductor		-	2 - 253
RAFIX FS - Contact block QC silver, E-Stop, with light conductor		-	2 - 257
Protective Collar for emergency stop RAFIX 22 FS <sup>+</sup>		5.00.456.001/0000	2 - 265
Fixing spanner for ring nut		5.05.800.062/0000	2 - 145, 2 - 261, 5 - 25

2

RAFIX  
22 FS<sup>+</sup>

## RAFIX 22 FS<sup>+</sup> Emergency stop pushbutton, reset by rotation

Technical data see page 2 - 184



Panel cut-out to IEC 60947-5-1



→ Reset	Illuminability	Degree of protection from front side	Order no.
by clockwise rotation	yes, lens translucent	IP65 (DIN EN 60529)	1.30.273.001/2200
by clockwise rotation	yes, lens translucent red	IP65 (DIN EN 60529)	1.30.273.001/2300
by clockwise rotation	no	IP65 (DIN EN 60529)	1.30.273.501/0300

Only use with E-stop contact blocks

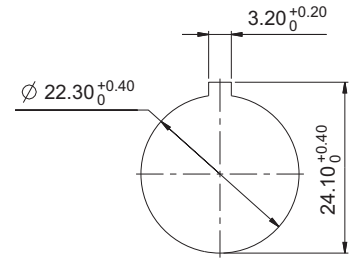
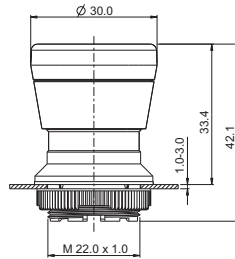
# CONTROL COMPONENTS

RAFIX 22 FS<sup>+</sup> - ACTUATORS



## RAFIX 22 FS<sup>+</sup> Emergency stop pushbutton, reset by pulling (IP65, IP69K)

Technical data see page 2 - 184



Panel cut-out to IEC 60947-5-1

→ Reset	Illuminability	Degree of protection from front side	Order no.
by pulling	yes, lens translucent	IP65 (DIN EN 60529); IP69K (ISO 20653)	1.30.273.101/2200
by pulling	yes, lens translucent red	IP65 (DIN EN 60529); IP69K (ISO 20653)	1.30.273.101/2300
by pulling	no	IP65 (DIN EN 60529); IP69K (ISO 20653)	1.30.273.601/0300

Only use with E-stop contact blocks

RAFIX  
22 FS<sup>+</sup>

DISTRIBUTED BY TEXIM EUROPE

## The Netherlands



Elektrostraat 17  
NL-7483 PG Haaksbergen

T: +31 (0)53 573 33 33  
F: +31 (0)53 573 33 30  
E: [nl@texim-europe.com](mailto:nl@texim-europe.com)

## Belgium



Zuiderlaan 14 bus 10  
B-1731 Zellik

T: +32 (0)2 462 01 00  
F: +32 (0)2 462 01 25  
E: [belgium@texim-europe.com](mailto:belgium@texim-europe.com)

## UK & Ireland



St. Mary's House, Church Lane  
Carlton Le Moorland  
Lincoln LN5 9HS

T: +44 (0)1522 789 555  
F: +44 (0)845 299 22 26  
E: [uk@texim-europe.com](mailto:uk@texim-europe.com)

## Germany North



Bahnhofstrasse 92  
D-25451 Quickborn

T: +49 (0)4106 627 07-0  
F: +49 (0)4106 627 07-20  
E: [germany@texim-europe.com](mailto:germany@texim-europe.com)

## Germany South



Martin-Kollar-Strasse 9  
D-81829 München

T: +49 (0)89 436 086-0  
F: +49 (0)89 436 086-19  
E: [germany@texim-europe.com](mailto:germany@texim-europe.com)

## Austria



Warwitzstrasse 9  
A-5020 Salzburg

T: +43 (0)662 216 026  
F: +43 (0)662 216 026-66  
E: [austria@texim-europe.com](mailto:austria@texim-europe.com)

## Nordic region



Sdr. Jagtvej 12  
DK-2970 Hørsholm

T: +45 88 20 26 30  
F: +45 88 20 26 39  
E: [nordic@texim-europe.com](mailto:nordic@texim-europe.com)

## Italy



Via Matteotti 43  
IT-20864 Agrate Brianza (MB)

T: +39 (0)395 967 226  
F: +39 (0)395 967 226  
E: [italy@texim-europe.com](mailto:italy@texim-europe.com)

## General information



[info@texim-europe.com](mailto:info@texim-europe.com)  
[www.texim-europe.com](http://www.texim-europe.com)