

## RAFIX 22 FS<sup>+</sup> Selector switches

→ The illuminated selector switches are provided with translucent handle markings. These are opaque on the non-illuminated versions.

### Technical Data

#### → General information

Actuator	handle
Marking of handle	see order block
Color of front ring	see order block
Form of collar	see order block

#### → Dimensions

Dimensions of collar	see order block
Overall height	22.24 mm
Mounting depth	PCB 9.2 mm, QC 27 mm
Mounting hole	22.3 mm
Key grid	30 x 30 mm

#### → Mechanical design

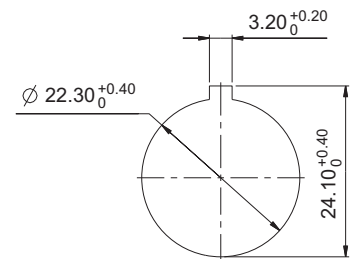
Mounting	ring nut
Contact function	see order block
Illuminability	see order block
Rotating angle	see order block
Torque for nut ring	1.2 Nm

#### → Mechanical characteristics

Torque max.	1.5 Nm
-------------	--------

#### → Other specifications

Operating life (operations)	500,000 momentary / 300,000 latching
Operating life (operations)	650,000 momentary / 400,000 latching
Degree of protection from front side	IP65 (DIN EN 60529)
Ambient temp. operating min.	-25 °C
Ambient temp. operating max.	+70 °C
Storage temperature min.	-40 °C
Storage temperature max.	+80 °C
Environmental resistance	acc. to IEC 60068-2-14, -30, -33 and -78
Salt spray	IEC 600 68-2-11
ROHS compliant	yes
REACH compliant	yes



Panel cut-out to IEC 60947-5-1

### Approvals



IEC 60947-5-x



UL 508



Distributed by:



[www.texim-europe.com](http://www.texim-europe.com)



### Accessories RAFIX 22 FS<sup>+</sup> - Selector switches

Description	Photo	Order no.	Additional accessories see page
RAFIX 22 FS <sup>+</sup> - Contact block PCB silver, Universal, with light conductor		-	2 - 247
RAFIX 22 FS <sup>+</sup> - Contact block QC gold, Universal, with light conductor		-	2 - 253
RAFIX 22 FS <sup>+</sup> - Contact block QC silver, Universal, with light conductor		-	2 - 256
RAFIX FS - Contact block PCB gold, Universal		-	2 - 243
RAFIX FS - Contact block PCB gold, Universal, with light conductor		-	2 - 242

# CONTROL COMPONENTS

RAFIX 22 FS<sup>+</sup> - ACTUATORS

**- Table (continued) -  
Accessories RAFIX 22 FS<sup>+</sup> - Selector switches**

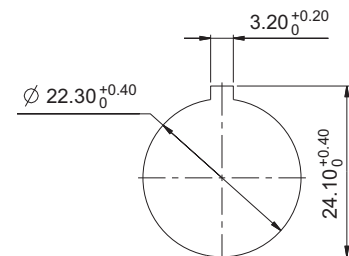
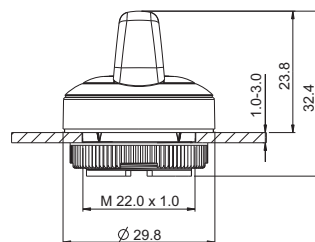
→ Description	Photo	Order no.	Additional accessories see page
RAFIX FS - Contact block PCB silver, Universal		-	2 - 248
Fixing spanner for ring nut		5.05.800.062/0000	2 - 145, 2 - 261, 5 - 25

2



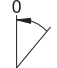


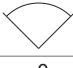
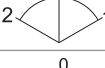

## RAFIX 22 FS<sup>+</sup> Selector switch, round collar

Technical data see page 2 - 173



Panel cut-out to IEC 60947-5-1

RAFIX  
22 FS<sup>+</sup>

→ Illuminability	Contact function	Rotating angle	Diagram	Order no.	
				Plastic front ring	Metallized front ring
yes	momentary	1 x 40°		1.30.272.001/22xx	1.30.272.002/2200
yes	momentary	2 x 40°		1.30.272.026/22xx	1.30.272.027/2200
yes	latching	1 x 90°, form L		1.30.272.101/22xx	1.30.272.102/2200
yes	latching	1 x 90°, form V		1.30.272.201/22xx	1.30.272.202/2200
yes	latching	2 x 60°		1.30.272.301/22xx	1.30.272.302/2200
yes	latching 1 x 90° and momentary 1 x 40°	1 x 90° and 1 x 40°		1.30.272.426/22xx	1.30.272.427/2200

xx = Front ring color: black = 01, red = 03, yellow = 04, green = 05, blue = 06, slate grey = 07, silver grey = 08

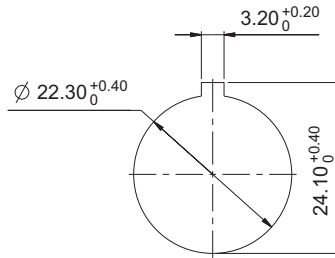
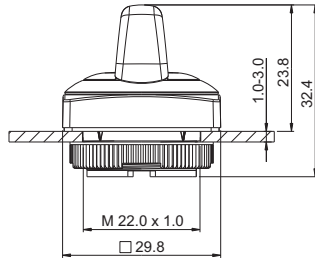
Other contact functions and handle marking colors available on request.

For colored illumination of the handle marking please use colored LED.

DISTRIBUTED BY TEXIM EUROPE

## RAFIX 22 FS<sup>+</sup> Selector switch, square collar



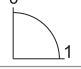

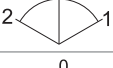

Technical data see page 2 - 173



Panel cut-out to IEC 60947-5-1



2

→ Illuminability	Contact function	Rotating angle	Order no.	
			Plastic front ring	Metallized front ring
yes	momentary	1 x 40° 	1.30.272.051/22xx	1.30.272.052/2200
yes	momentary	2 x 40° 	1.30.272.076/22xx	1.30.272.077/2200
yes	latching	1 x 90°, form L 	1.30.272.151/22xx	1.30.272.152/2200
yes	latching	1 x 90°, form V 	1.30.272.251/22xx	1.30.272.252/2200
yes	latching	2 x 60° 	1.30.272.351/22xx	1.30.272.352/2200
yes	latching 1 x 90° and momentary 1 x 40°	1 x 90° and 1 x 40° 	1.30.272.476/22xx	1.30.272.477/2200

RAFIX 22 FS<sup>+</sup>

xx = Front ring color: black = 01, red = 03, yellow = 04, green = 05, blue = 06, slate grey = 07, silver grey = 08

Other contact functions and handle marking colors available on request.

For colored illumination of the handle marking please use colored LED.

## The Netherlands



Elektrostraat 17  
NL-7483 PG Haaksbergen

T: +31 (0)53 573 33 33  
F: +31 (0)53 573 33 30  
E: [nl@texim-europe.com](mailto:nl@texim-europe.com)

## Belgium



Zuiderlaan 14 bus 10  
B-1731 Zellik

T: +32 (0)2 462 01 00  
F: +32 (0)2 462 01 25  
E: [belgium@texim-europe.com](mailto:belgium@texim-europe.com)

## UK & Ireland



St. Mary's House, Church Lane  
Carlton Le Moorland  
Lincoln LN5 9HS

T: +44 (0)1522 789 555  
F: +44 (0)845 299 22 26  
E: [uk@texim-europe.com](mailto:uk@texim-europe.com)

## Germany North



Bahnhofstrasse 92  
D-25451 Quickborn

T: +49 (0)4106 627 07-0  
F: +49 (0)4106 627 07-20  
E: [germany@texim-europe.com](mailto:germany@texim-europe.com)

## Germany South



Martin-Kollar-Strasse 9  
D-81829 München

T: +49 (0)89 436 086-0  
F: +49 (0)89 436 086-19  
E: [germany@texim-europe.com](mailto:germany@texim-europe.com)

## Austria



Warwitzstrasse 9  
A-5020 Salzburg

T: +43 (0)662 216 026  
F: +43 (0)662 216 026-66  
E: [austria@texim-europe.com](mailto:austria@texim-europe.com)

## Nordic region



Sdr. Jagtvej 12  
DK-2970 Hørsholm

T: +45 88 20 26 30  
F: +45 88 20 26 39  
E: [nordic@texim-europe.com](mailto:nordic@texim-europe.com)

## Italy



Via Matteotti 43  
IT-20864 Agrate Brianza (MB)

T: +39 (0)395 967 226  
F: +39 (0)395 967 226  
E: [italy@texim-europe.com](mailto:italy@texim-europe.com)

## General information



[info@texim-europe.com](mailto:info@texim-europe.com)  
[www.texim-europe.com](http://www.texim-europe.com)