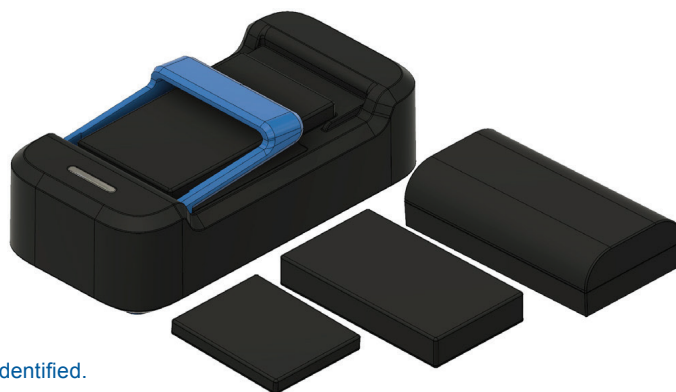


# CHARGER FOR VARTA EASY- PACK LI-ION BATTERIES.



- ▶ 3-step adaptive charge control.
- ▶ Charge adapts to battery pack type, which is automatically identified.
- ▶ Automatic battery temperature monitoring and thermal control to prevent charge of cold or warm batteries.
- ▶ Universal input voltage (90 - 264 VAC).
- ▶ Wake up and low current start-up of deeply discharged batteries.
- ▶ Error indication for reverse polarity, short circuit, charging battery packs with wrong number of cells and safety timer run-out.

## ▶ Technical specifications

### GENERAL DATA

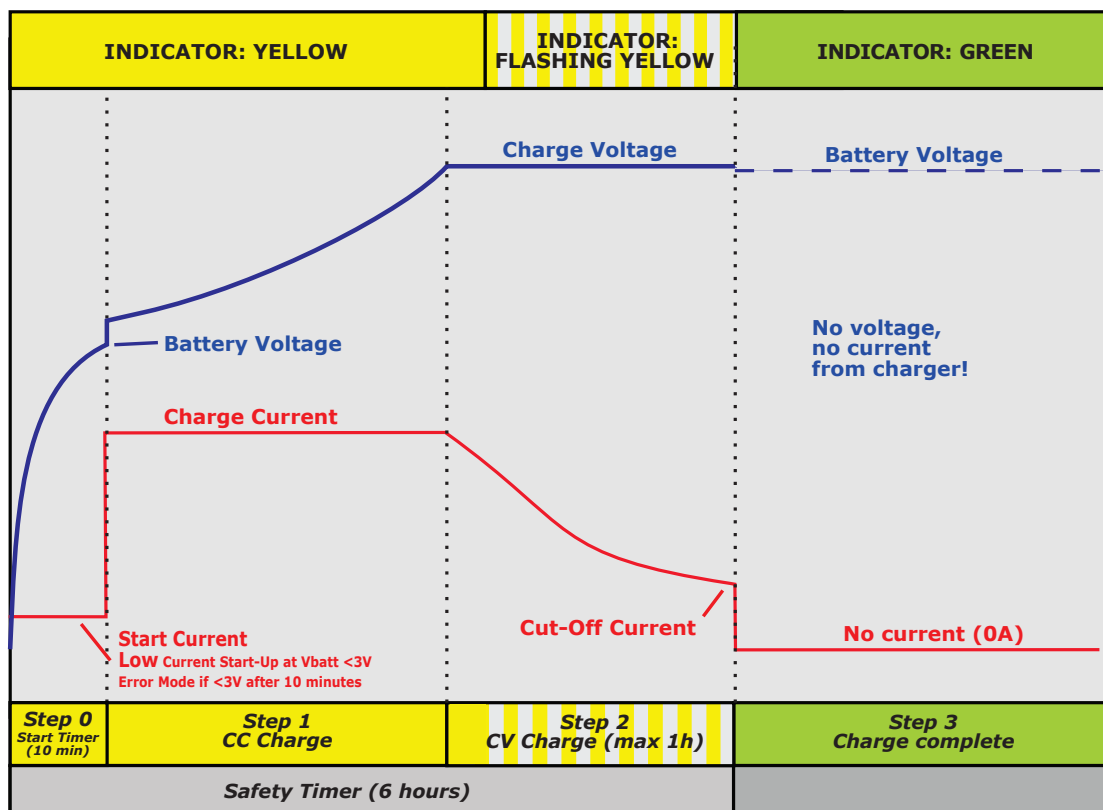
Input voltage	90 - 264 VAC
Line frequency	37 - 63 Hz
Switch frequency, approx.	55 kHz
Leakage current from battery with mains switched off	~ 0 A
Temperature range operating	-25 °C to +40 °C
Temperature range storage	-25 °C to +85 °C
Ripple	< 100 mV p-p
Protection	Protected against reversed polarity and short circuit proof
Insulation class	Class II
Insulation voltage primary / secondary	4000 VAC / 5700 VDC
Input terminals	2-pin IEC 60320/C8
Output terminals	Battery docking
IP-code	4X
Dimensions (l x w x d)	115 x 56 x 35 mm
Weight	175 g

### STANDARDS

EN/IEC/ANSI 60601-1 3ed, EN/IEC 60335-1 and -2-29, EN/IEC/UL 62368-1, EN 61000-6-1 and -3, EN 60601-1-2, EN 55014-1 and -2, EN 55022 and EN 55024, EN 55032

CHARGE CONTROL		STEP 0 (YELLOW)	STEP 1 (YELLOW)	STEP 2 (FLASH YELLOW)	STEP 3 (GREEN)	
BATTERY PACK	MAX OUTPUT POWER (W)	LOW CURRENT START-UP FOR DEEPLY DISCHARGED BATT.	CHARGE CURRENT	CHARGE VOLTAGE	CHARGE TERMINATION WHEN ICH:	RESTART WHEN VBAT
SMALL	1.9 W	CC 25mA±10mA when batt. < 3V	0.45A ±0.1A	4.2V ±0.05V	< 25mA or max. 1 hr.	< 4.1V±0.05V
LARGE	3.6 W	CC 55mA±25mA when batt. < 3V	0.85A ±0.1A		< 55mA or max. 1 hr.	
X-LARGE	6.3 W	CC 125mA±50mA when batt. < 3V	1.5A ±0.15A		< 125mA or max. 1 hr.	
PLUS	6.3 W	CC 260mA±75mA when batt. < 3V	1.5A ±0.15A		< 260mA or max. 1 hr.	

► Charging characteristics and LED indication



► BATTERY NOT CONNECTED INDICATIONS

Battery not connected is indicated by FLASHING GREEN. In this mode charger will apply short pulses attempting to wake up deeply discharged batteries.

► ERROR INDICATIONS

- 2 red blinks: Battery is connected to charger with wrong polarity!
- 3 red blinks: Charger output is shorted. Check output cable connection!
- 4 red blinks: Battery voltage is low. Check battery status or voltage.
- 5 red blinks: Safety timer has run out. Check battery status or capacity.
- LED off: Battery voltage is too high. Check battery voltage.

► WAIT MODE INDICATIONS

- Yellow with 1 red blink: Battery temperature is too low (<0°C).
- Yellow with 2 red blink: Battery temperature is too high (>45°C).

## The Netherlands



Elektrostraat 17  
NL-7483 PG Haaksbergen

T: +31 (0)53 573 33 33  
F: +31 (0)53 573 33 30  
E: [nl@texim-europe.com](mailto:nl@texim-europe.com)

## Belgium



Zuiderlaan 14 bus 10  
B-1731 Zellik

T: +32 (0)2 462 01 00  
F: +32 (0)2 462 01 25  
E: [belgium@texim-europe.com](mailto:belgium@texim-europe.com)

## UK & Ireland



St. Mary's House, Church Lane  
Carlton Le Moorland  
Lincoln LN5 9HS

T: +44 (0)1522 789 555  
F: +44 (0)845 299 22 26  
E: [uk@texim-europe.com](mailto:uk@texim-europe.com)

## Germany North



Bahnhofstrasse 92  
D-25451 Quickborn

T: +49 (0)4106 627 07-0  
F: +49 (0)4106 627 07-20  
E: [germany@texim-europe.com](mailto:germany@texim-europe.com)

## Germany South



Martin-Kollar-Strasse 9  
D-81829 München

T: +49 (0)89 436 086-0  
F: +49 (0)89 436 086-19  
E: [germany@texim-europe.com](mailto:germany@texim-europe.com)

## Austria



Warwitzstrasse 9  
A-5020 Salzburg

T: +43 (0)662 216 026  
F: +43 (0)662 216 026-66  
E: [austria@texim-europe.com](mailto:austria@texim-europe.com)

## Nordic region



Sdr. Jagtvej 12  
DK-2970 Hørsholm

T: +45 88 20 26 30  
F: +45 88 20 26 39  
E: [nordic@texim-europe.com](mailto:nordic@texim-europe.com)

## Italy



Via Matteotti 43  
IT-20864 Agrate Brianza (MB)

T: +39 (0)395 967 226  
F: +39 (0)395 967 226  
E: [italy@texim-europe.com](mailto:italy@texim-europe.com)

## General information



[info@texim-europe.com](mailto:info@texim-europe.com)  
[www.texim-europe.com](http://www.texim-europe.com)