

## AD-303N

Dipole Antenna, 5dBi/5dBi 2.4G/5GHz

RP-SMA(M) connector



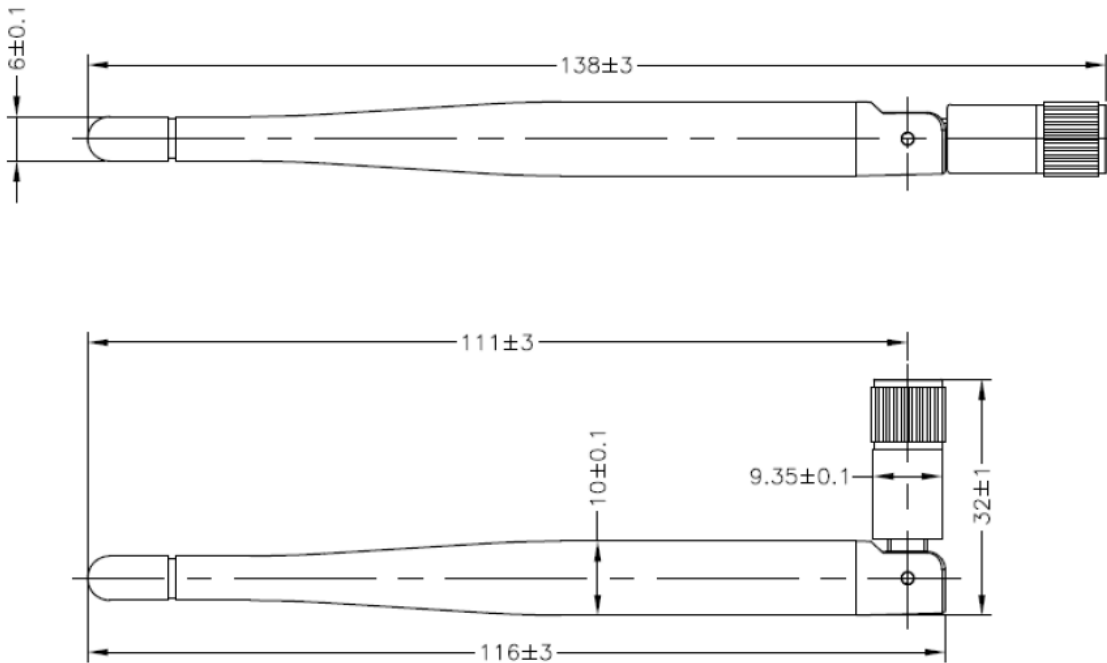
### Wireless Embedded System Antenna Solution

Ant. AD-303N is a dual-band dipole antenna for the 2.4 to 2.5 GHz and 5.15 to 5.825 GHz band with 3 dBi and 3 dBi gain on each band. This antenna has a RP-SMA plug connector can provides broad coverage and ideally suited for wireless LAN.

#### Specification

<b>Description</b>	Model Name	Ant. AD-303N
	Color	Black
<b>Electrical Characteristics</b>	Antenna Type	Dual-Band Dipole
	Operating Frequency Range	2400 to 2500 MHz
		5150 to 5825 MHz
	Polarization Type	Linear ; Vertical
	Type of Radiation	Toroidal
	Peak Gain	2.4-2.5GHz@3dBi
		5.15-5.825GHz@3dBi
Impedance	50 Ohms	
V.S.W.R.	≤ 2.0	
<b>Mechanical Characteristics</b>	Connector Type	RP-SMA (M)
<b>Raw Material</b>	Coaxial Cable	RG-178
	Housing	TPU
	Hinge	PC+ALLOY

## Drawing Antenna

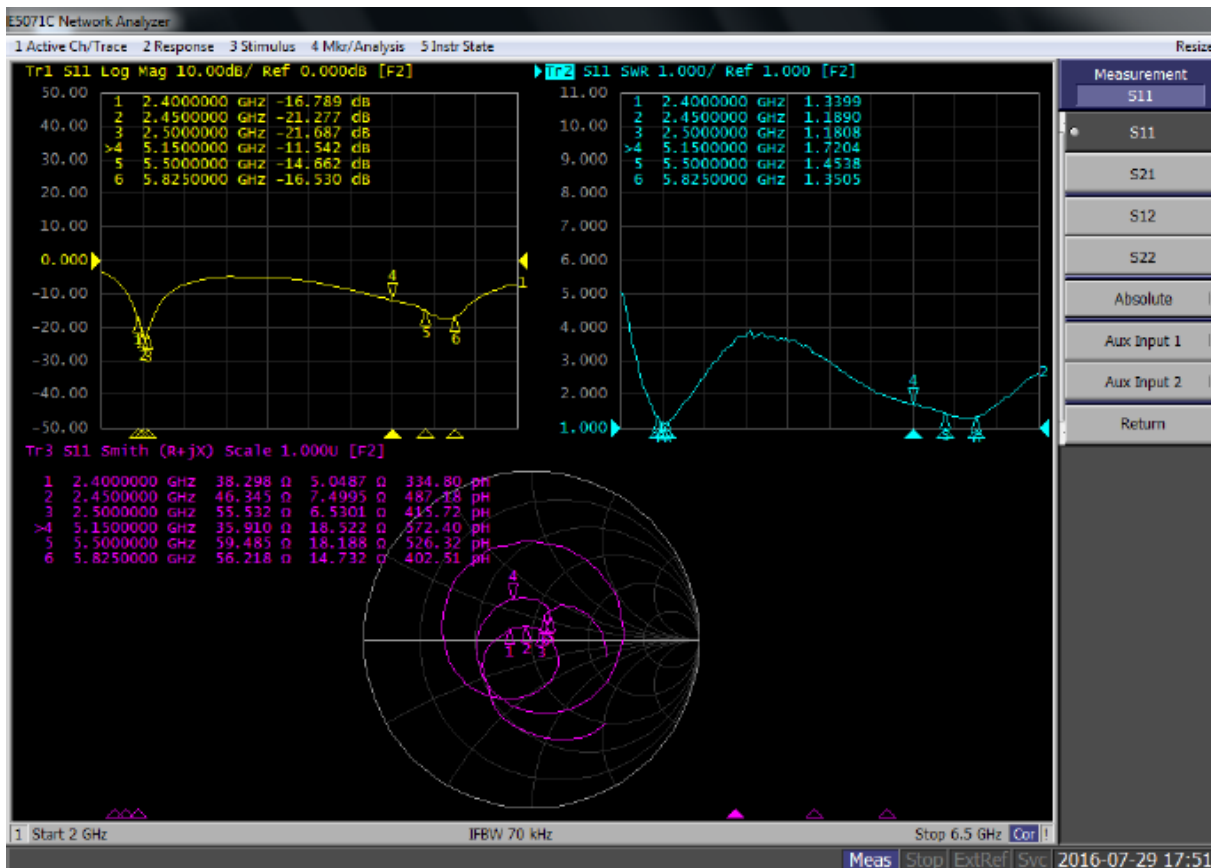


### Tolerances:

- X:  $\pm 0.5$
- X.X:  $\pm 0.3$
- X.XX:  $\pm 0.1$
- Angular:  $\pm 5.0^\circ$

## Electrical Properties

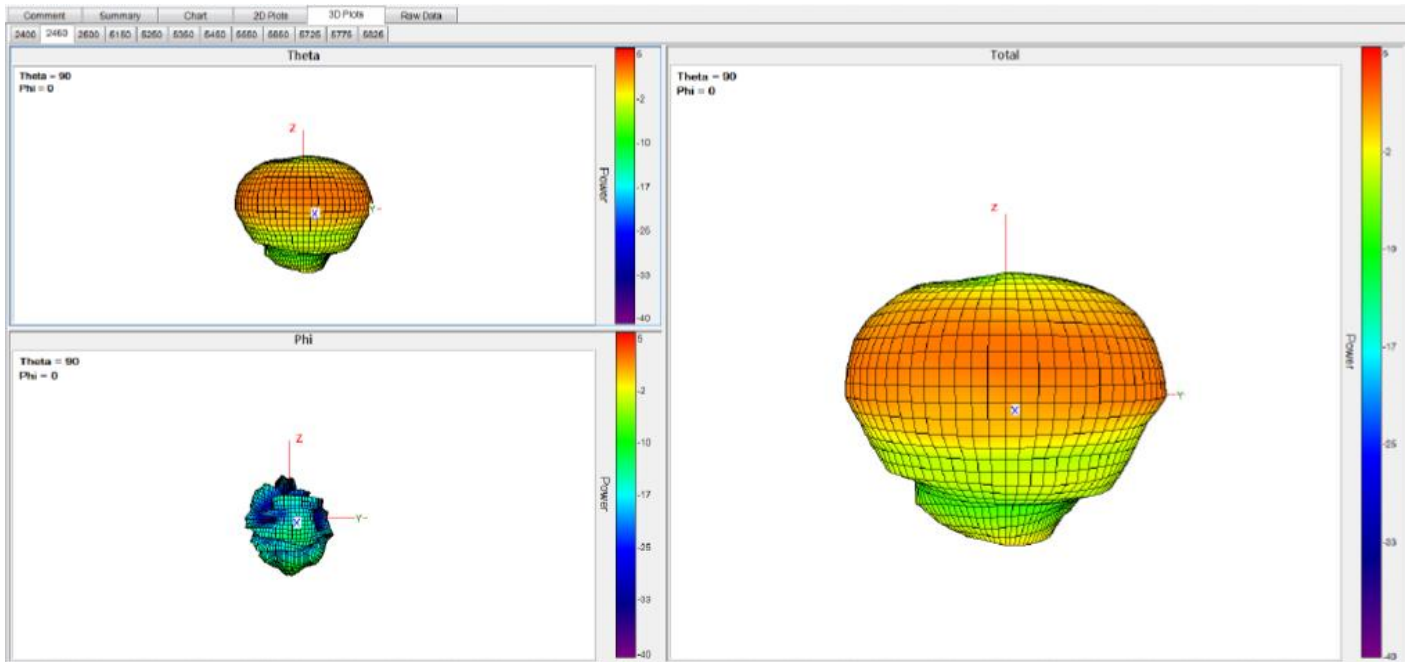
### Ant S-Parameter, VSWR & Smith Chart



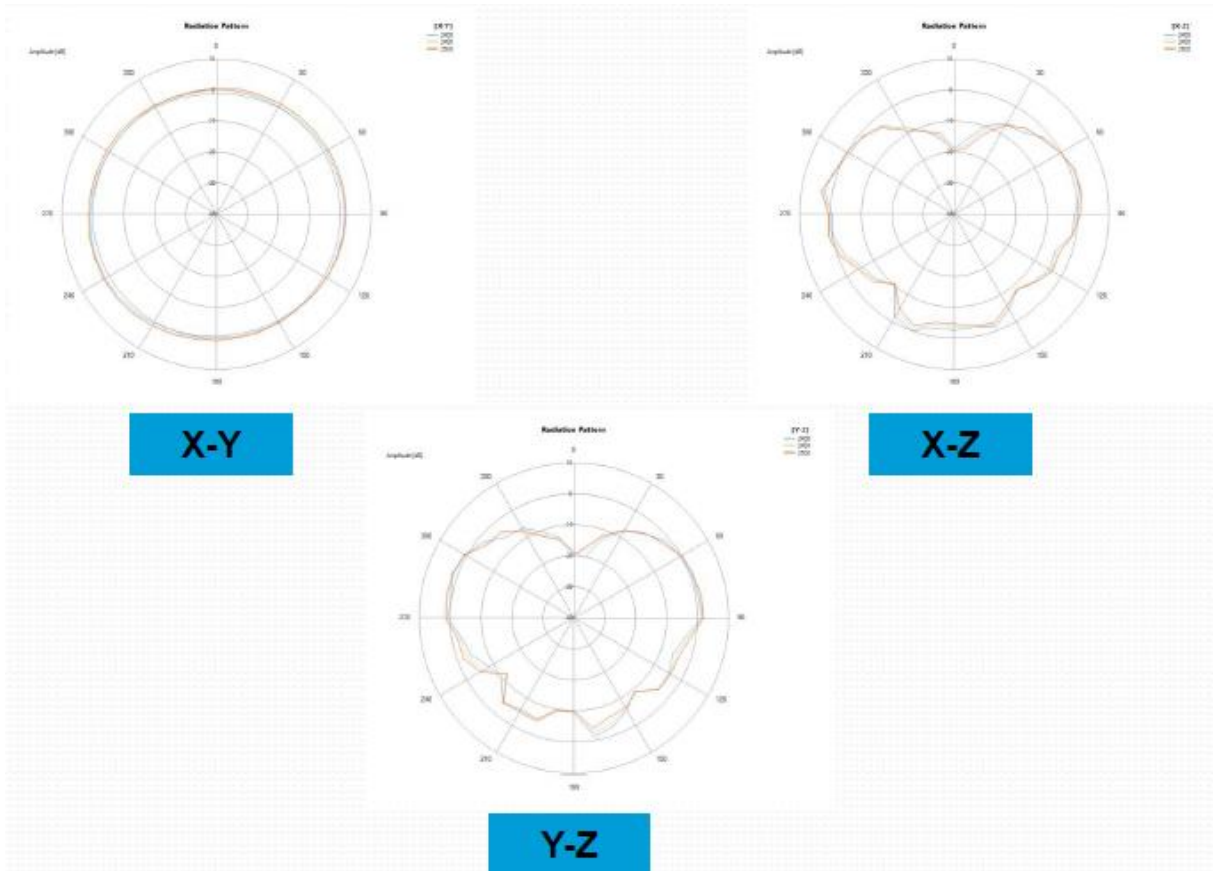
## Typical Performance

Ant												
Frequency (MHz)	2400	2450	2500	5150	5250	5350	5450	5550	5650	5725	5775	5825
Efficiency (dB)	-1.85	-1.49	-1.41	-1.57	-1.28	-1.18	-1.13	-1.73	-1.76	-1.83	-1.64	-1.96
Peak Gain (dBi)	2.86	3.14	3.10	2.59	2.82	3.24	3.45	2.79	3.01	2.85	2.97	2.57
Efficiency (%)	65.27	71.02	72.24	69.68	74.43	76.29	77.02	67.16	66.71	65.58	68.48	63.63

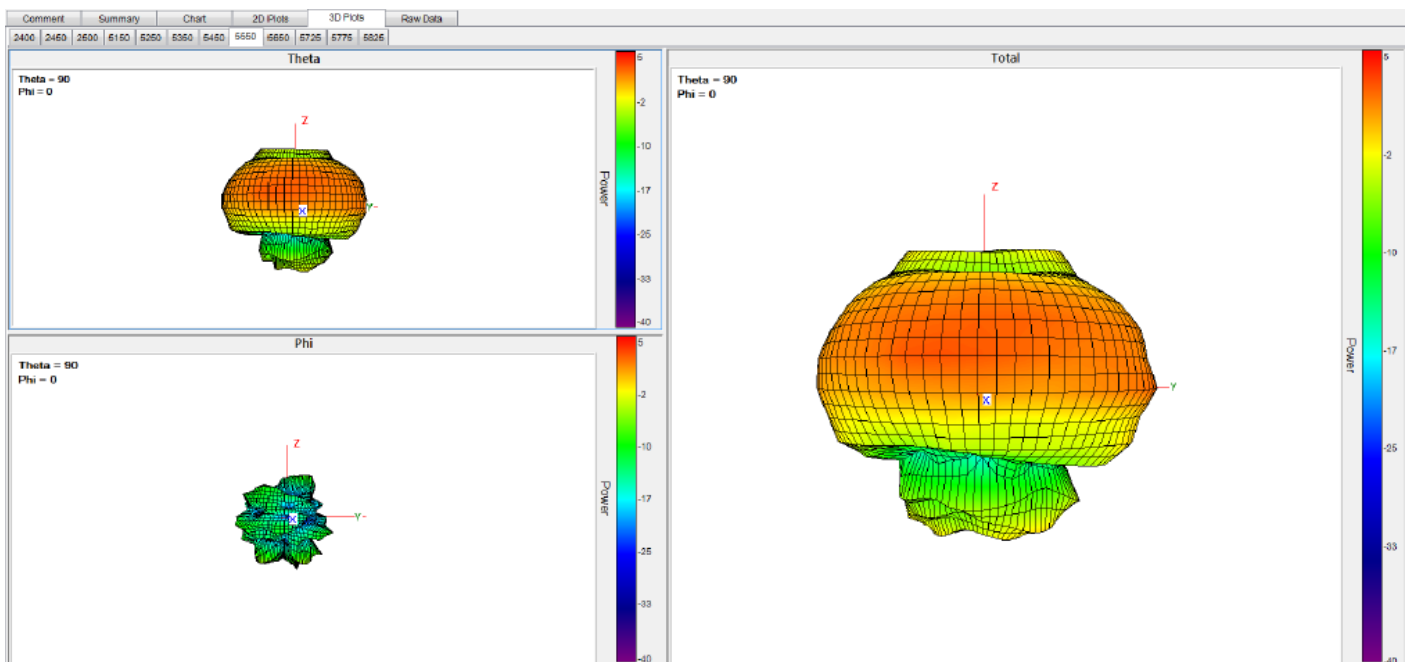
## 2.4G 3D Gain pattern



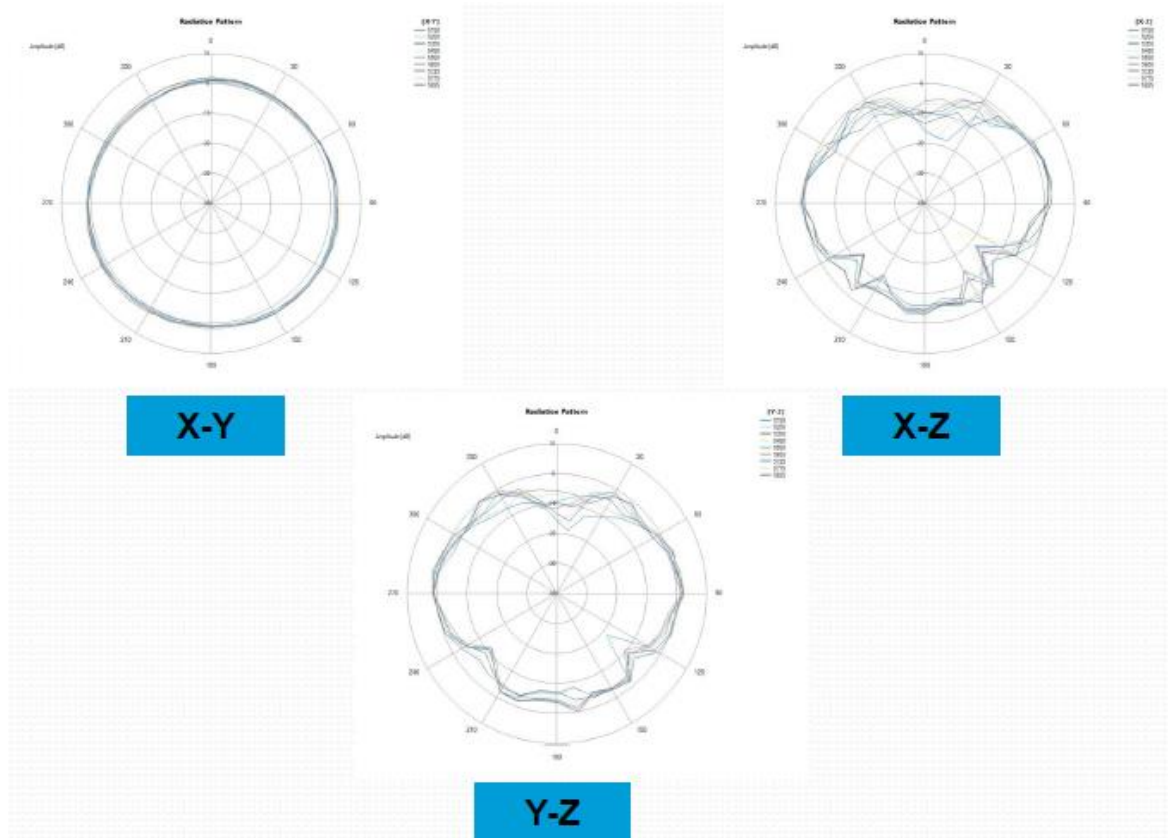
**2.4G 2D Gain pattern**



**5G 3D Gain pattern**



**5G 2D Gain pattern**



**Ordering Information**

Product Name	Part Number	Description
<a href="#">Ant. AD-303N</a>	R3410110222	Dipole Antenna, 3dBi/3dBi 2.4G/5GHz, RP-SMA(M) connector