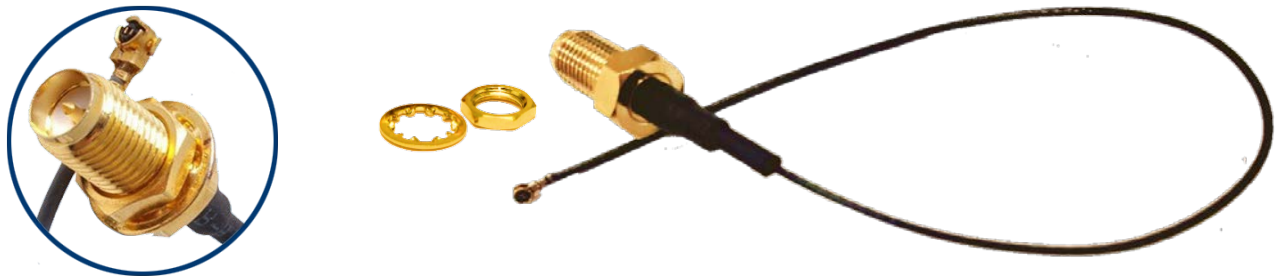


CBIRF-NE250



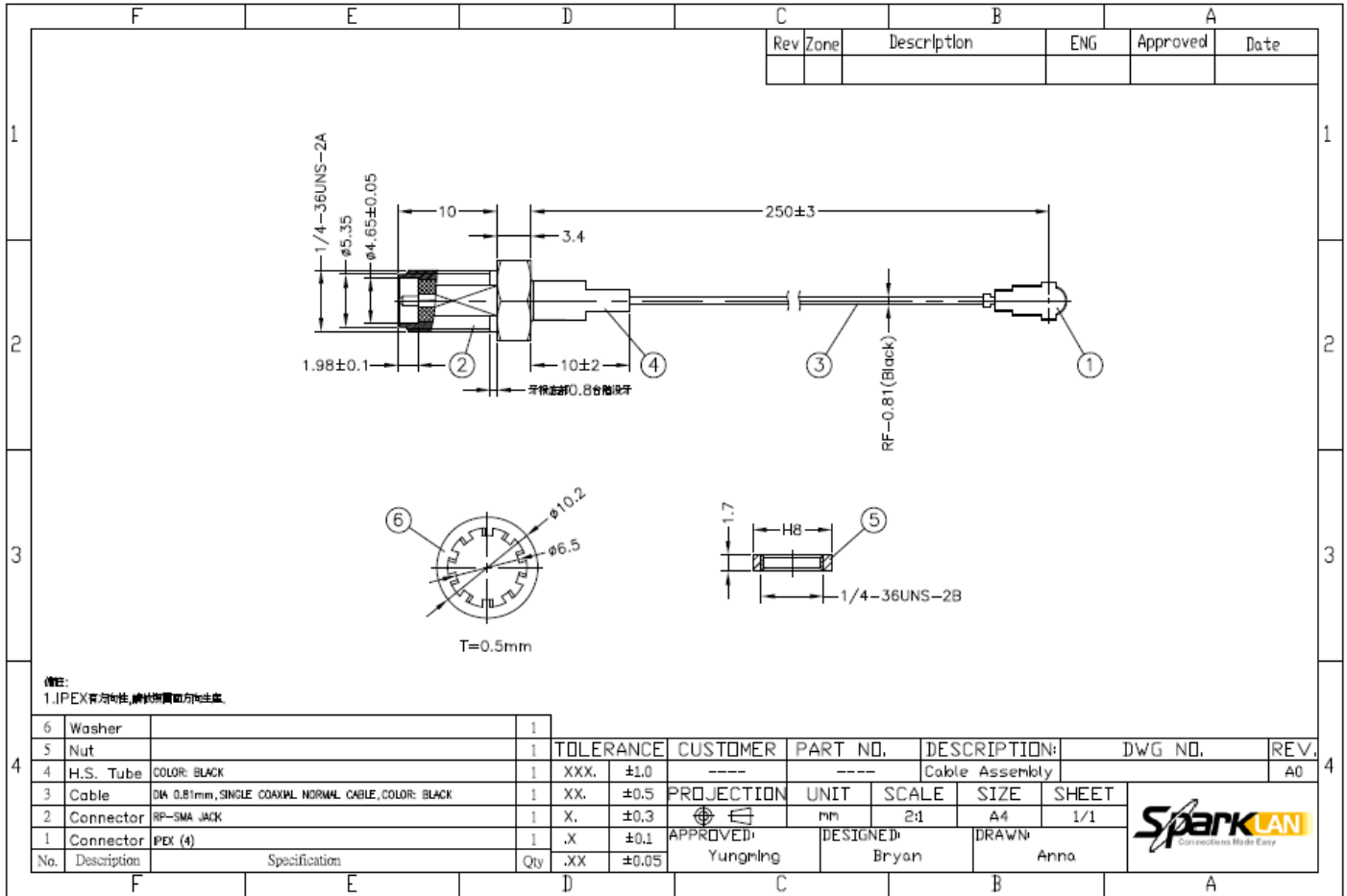
Provides Good Working Performance in Various Application of Wireless

MHF4 is a miniature RF connector for mini PCI Express Module that commonly used for M.2 (NGFF) Module which requires the I-PEX/MHF4 connector. The RP-SMA Female connector is compliant for all types of wireless antennas including WIFI networks, also have a reliable characteristic with long life-span, performance is excellent, high frequency.

Specification

Connector Type	RP-SMA Female (Jack) MHF4
Connector Material	Gold Plated
Cable Type	Coaxial 0.81mm Black Jacket
Cable Length	250mm±3
Jacket Material	FEP
Jacket Color	Black

Drawing Cable



Ordering Information

Product Name	Part Number	Description
CBIRF-NE250	R3470300026	RF Cable, I-PEX/MHF4 to RP-SMA(F); L:250mm; Coaxial 0.81 Black