

Distributed by:



www.texim-europe.com

RockTouch

RUGGEDIZE LINE INTRODUCTION

- **HIGH PERFORMANCE**
- **AGGRESSIVE**
- **FLEXIBLE**
- **THE BEST PCAP PRODUCT LINE**

.....

An Exciting Revolution!!!

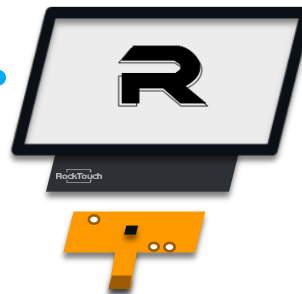
Because RockTouch never stop to provide innovation to customer, Ruggedize line is for the Best!



RockTouch Line	Interface	Controller	Size	Fingers number	Max Glass Thickness	Signal Noise Ration	Palm	Gloves	Water	Special
X line	I2C or USB or RS-232	BIG COF	10.1"W up to 21.5"W	10	8 mm	High	Rejection features	Medical Industrial	Small Rejection	
H line	I2C or USB	BIG COF	7"W up to 21.5"W	10	8 mm	Medium	Rejection features	Medical Industrial	Full Water	

Then after hundreds of thousand installations we make a combined (H +X) next level product line, to fulfill any customer requirement with ONE PRODUCT LINE ONLY

Ruggedize Line	I2C and USB (Combo)	COMPACT Embedded Removable COF	7"W up to 27"W	10	8 mm	High	Rejection features	Medical Industrial	Full Water	Custom H/W features
----------------	---------------------	--------------------------------	----------------	----	------	------	--------------------	--------------------	------------	---------------------

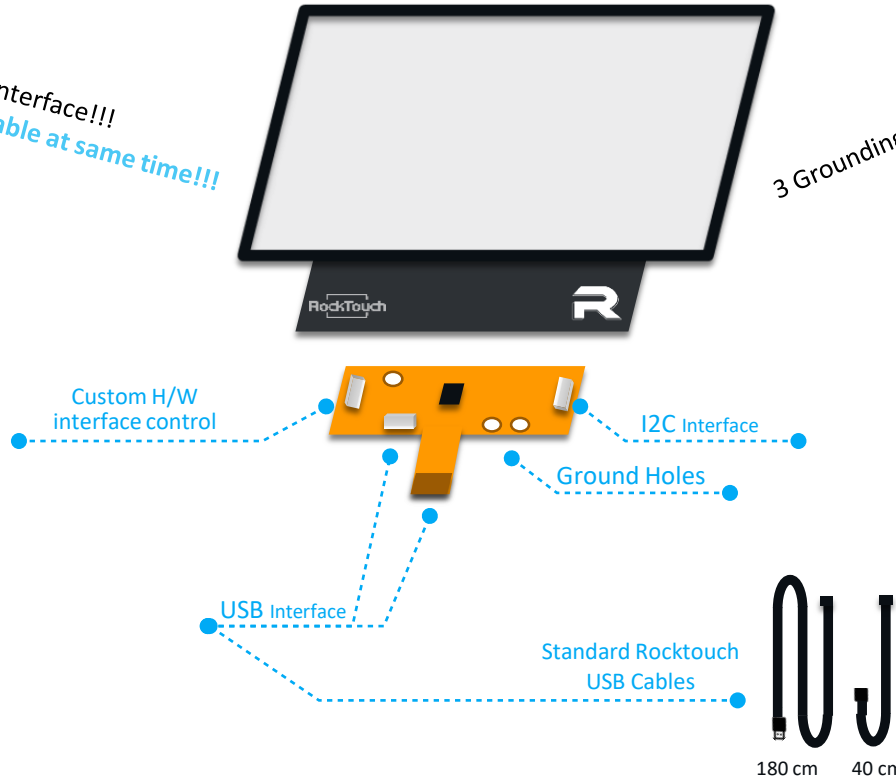


A Closer Look

RockTouch Line	Interface	Controller	Size	Fingers number	Max Glass Thickness	Signal Noise Ration	Palm	Gloves	Water	Special
Ruggedize Line	I2C and USB (Combo)	COMPACT Embedded removable COF	7"W up to 27"W	10	8 mm	High	Rejection features	Medical Industrial	Full Water	Custom H/W features

Combo Interface!!!
I2C and USB are **Enable at same time!!!**

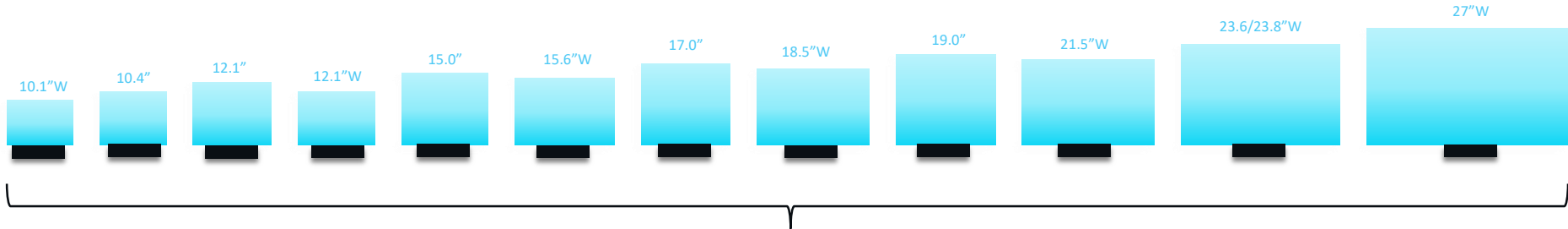
3 Grounding Holes and SUS plate!!!



DISTRIBUTED BY TEXIM EUROPE



A Full Product Line Family



1 External Embedded COF
 COMBO I2C/USB
 Current Cables and accessory can be used

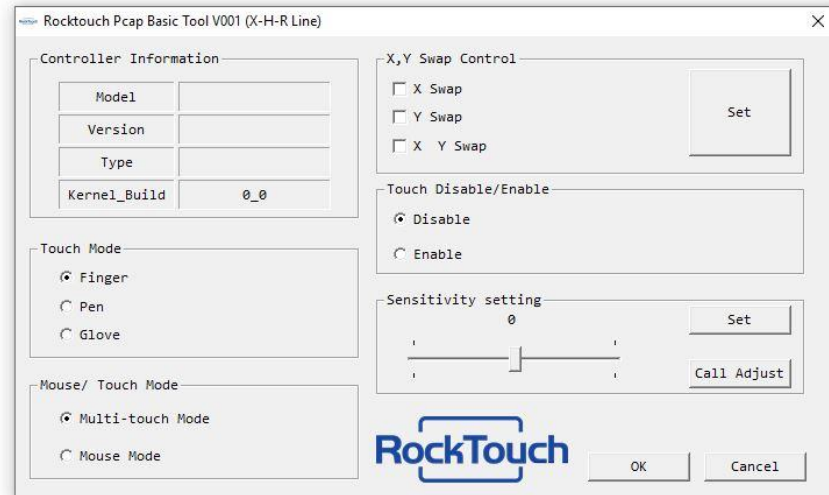
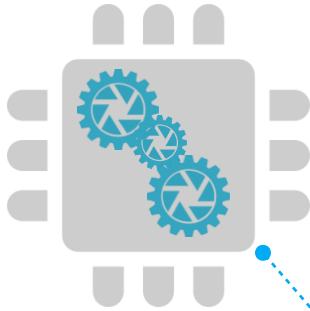
And then also 7W
 Ruggedize Line Available:



COF Solution
 COMBO I2C/USB
 Current Cables and accessory can be used

A New RockTouch Software Tools (under developing)

As RockTouch policy to support customer 360 degree we also developing a tool to allow customer some easy immediate Firmware Tuning on the field



The Netherlands



Elektrostraat 17
NL-7483 PG Haaksbergen

T: +31 (0)53 573 33 33
F: +31 (0)53 573 33 30
E: nl@texim-europe.com

Belgium



Zuiderlaan 14 bus 10
B-1731 Zellik

T: +32 (0)2 462 01 00
F: +32 (0)2 462 01 25
E: belgium@texim-europe.com

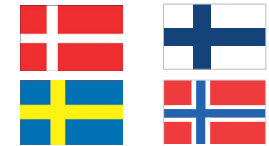
UK & Ireland



St. Mary's House, Church Lane
Carlton Le Moorland
Lincoln LN5 9HS

T: +44 (0)1522 789 555
F: +44 (0)845 299 22 26
E: uk@texim-europe.com

Nordic region



Sdr. Jagtvej 12
DK-2970 Hørsholm

T: +45 88 20 26 30
F: +45 88 20 26 39
E: nordic@texim-europe.com

Germany North



Bahnhofstrasse 92
D-25451 Quickborn

T: +49 (0)4106 627 07-0
F: +49 (0)4106 627 07-20
E: germany@texim-europe.com

Germany South



Martin-Kollar-Strasse 9
D-81829 München

T: +49 (0)89 436 086-0
F: +49 (0)89 436 086-19
E: germany@texim-europe.com

Austria



Warwitzstrasse 9
A-5020 Salzburg

T: +43 (0)662 216 026
F: +43 (0)662 216 026-66
E: austria@texim-europe.com

Italy



Via Matteotti 43
IT-20864 Agrate Brianza (MB)

T: +39 (0)39 971 3293
F: +39 (0)39 971 3293
E: italy@texim-europe.com

RockTouch

Keep Looking Forward