

# SPECIFICATION

This product uses ROHS compliant material

<b>Product Name:</b>	DSI display module
<b>PNP Part No.:</b>	PD05001C1
<b>Customer Part No.:</b>	
<b>Date:</b>	2021-08-10
<b>Revision:</b>	V1.1

<b>Prepared</b>	<b>Checked</b>	<b>Verified by QA Dept.</b>	<b>Verified by R&amp;D Dept.</b>

**For Customer:**

<b>Approved By</b>	<b>Comment</b>

## 1. General Information

PD05001C1 is a 5inch DSI touchscreen. It is composed of a 5inch TFT display, 5inch capacitive touch panel, and a DSI adaptor board. This DSI touchscreen has 800x480 resolution and support multi-touch. It can be connected to Raspberry Pi as a monitor and it is real plug and play. This product accords with ROHS environmental criterion.

Item	Contents	Unit	Note
Display type	TFT, normal black	-	-
Display color	16.7M	Color	1
Viewing direction	Full viewing angle	O' Clock	-
Module size	120.70 x 75.80 x 11.95	mm	-
Viewing area(W×H)	108.97 x 65.79	mm	-
Active area (W×H)	108.00 x 64.80	mm	-
Resolution	800 x 480	dots	-
Surface luminance	300 (Typ.)	cd/m <sup>2</sup>	-
Touch type	Capacitive (PCAP)	-	-
Multi-touch	5 points	-	2
Cover glass type	Soda lime	-	-
Interface	DSI to Raspberry Pi	-	-
Weight	150	g	-

Note 1: Color tune is slightly changed by temperature and driving voltage.

Note 2: Depends on operating system.

## 2. Absolute Maximum Ratings

### 2.1 Electrical absolute maximum ratings

Item	Symbol	Min.	Typ.	Max.	Unit	Note
Power supply voltage	VDD	-	3.3	-	V	1
LED life time	-	-	30000	-	Hr.	2

Note 1: VDD is supplied from Raspberry Pi directly.

Note 2: The “LED life time” is defined as the module brightness decrease to 50% original brightness at Ta=25°C.

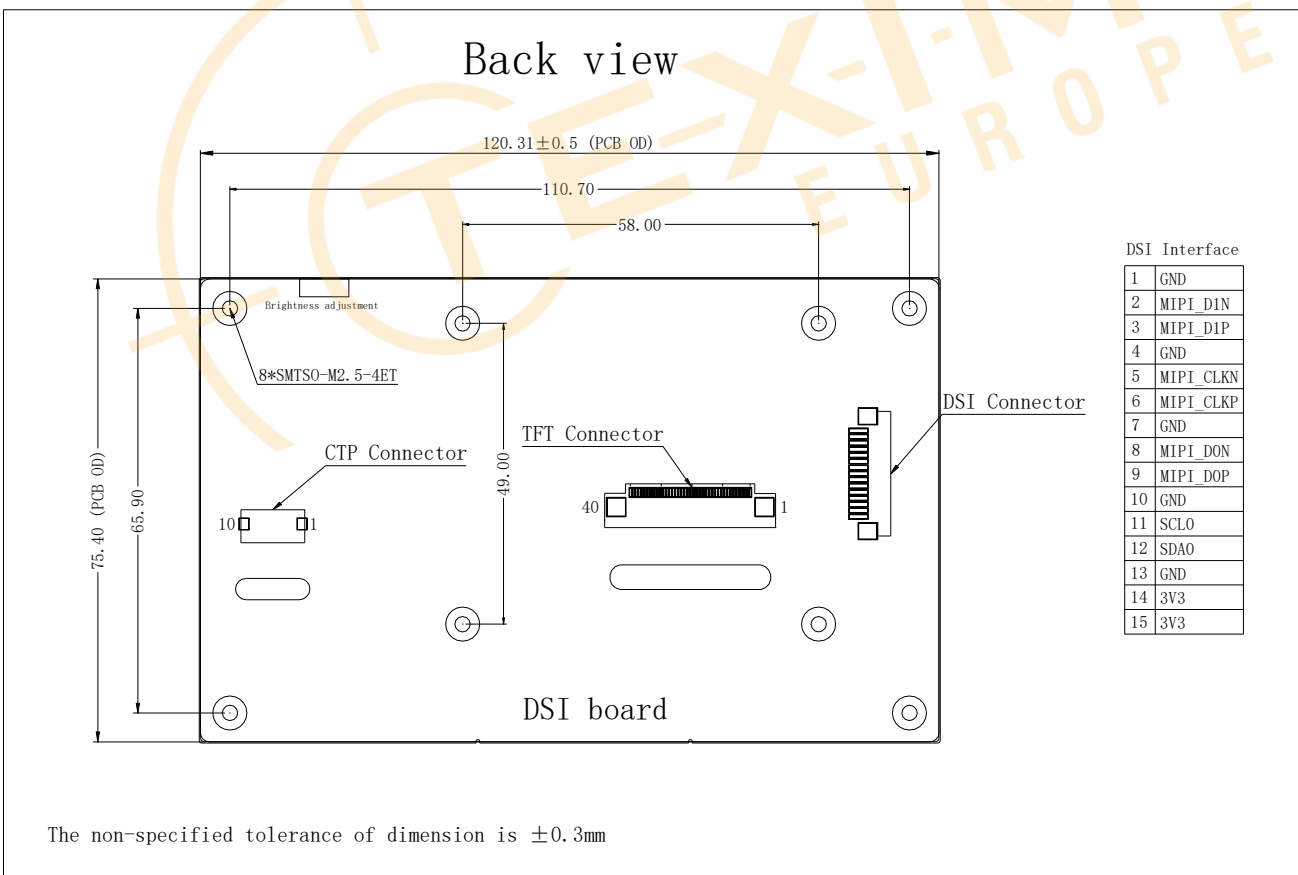
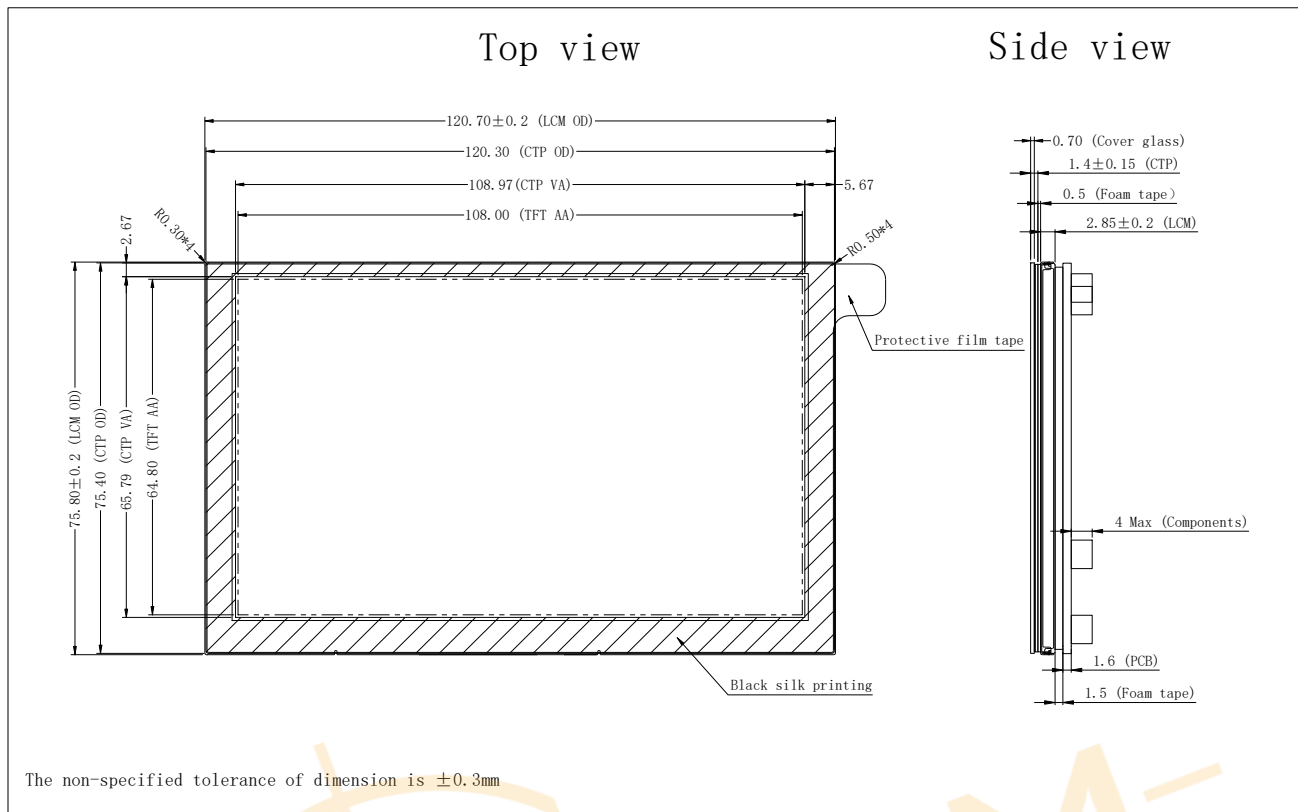
### 2.2 Environmental absolute maximum ratings

Item	Storage		Operating		Note
	Min.	Max.	Min.	Max.	
Ambient Temperature	-20°C	70°C	-10°C	60°C	1, 2

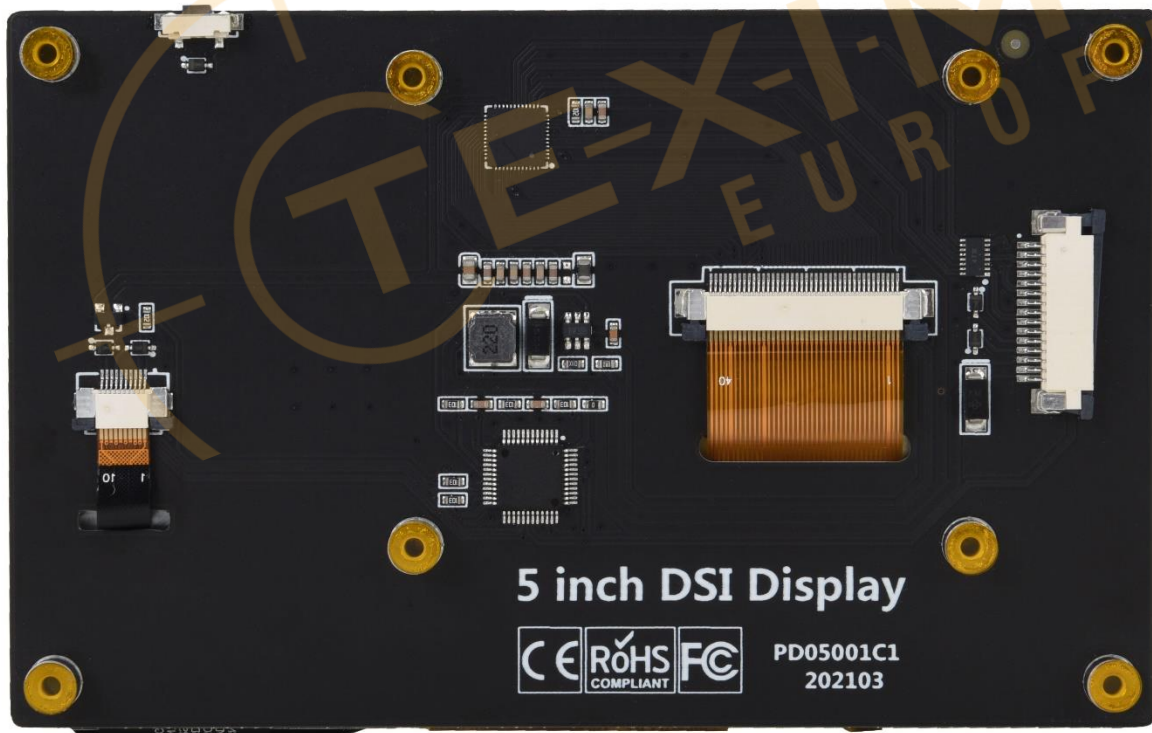
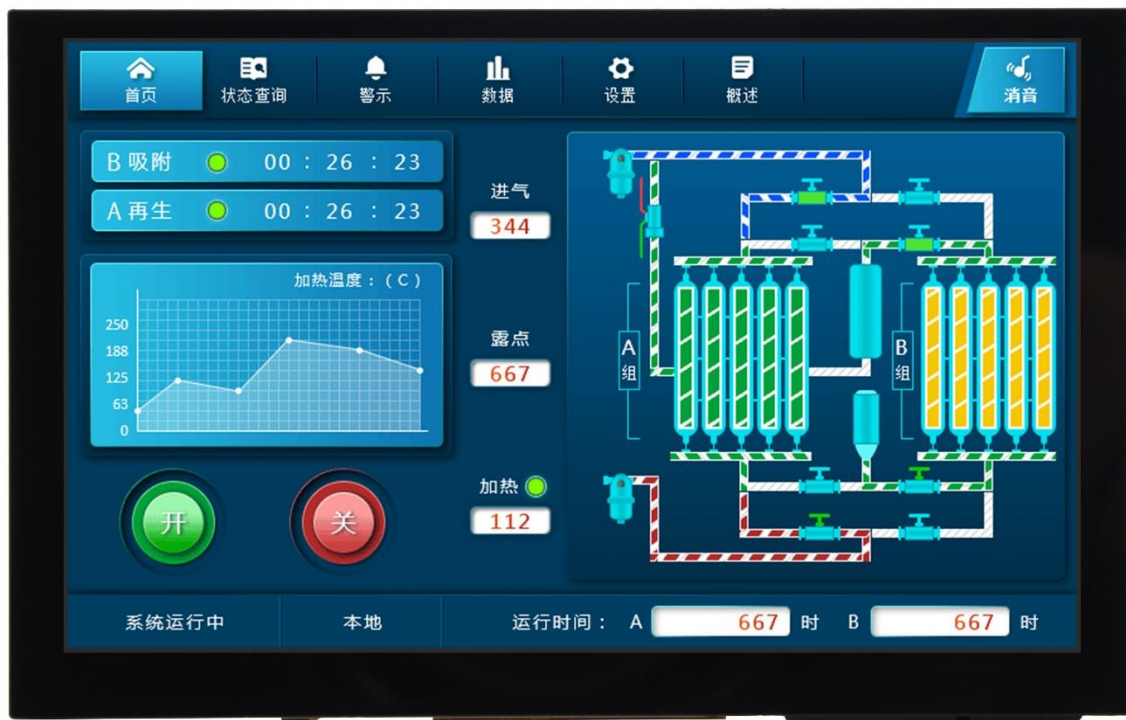
Note 1: The response time will become lower when operated at low temperature.

Note 2: Background color changes slightly depending on ambient temperature, the phenomenon is reversible.

### 3. Outline Drawing



## 4. Module Pictures



## 5. Packing Specification

Please consult our technical department for detail information.