

SPECIFICATION

This product uses ROHS compliant material

Product Name:	DSI display module
PNP Part No.:	PD08001
Customer Part No.:	
Date:	2021-06-30
Revision:	V1.0

Prepared	Checked	Verified by QA Dept.	Verified by R&D Dept.

For Customer:

Approved By	Comment

1. General Information

PD08001 is a 8inch DSI touchscreen. It is composed of a 8inch TFT display, 8inch capacitive touch panel, and a DSI adaptor board. This DSI touchscreen has 800x480 resolution and support multi-touch. It can be connected to Raspberry Pi as a monitor and it is real plug and play. This product accords with ROHS environmental criterion.

Item	Contents	Unit	Note
Display type	TFT, normal white	-	-
Display color	16.7M	Color	1
Viewing direction	12	O' Clock	-
	U/L/D/R: 55/65/65/65	-	-
Module size	192.80 x 116.90 x 15.60	mm	-
Viewing area(W×H)	-	mm	-
Active area (W×H)	176.64 x 99.36	mm	-
Resolution	800 x 480	dots	-
Surface luminance	400 (Typ.)	cd/m ²	-
Touch type	None	-	-
Multi-touch	-	-	2
Cover glass type	-	-	-
Interface	DSI to Raspberry Pi	-	-
Weight	TBD	g	-

Note 1: Color tune is slightly changed by temperature and driving voltage.

Note 2: Depends on operating system.

2. Absolute Maximum Ratings

2.1 Electrical absolute maximum ratings

Item	Symbol	Min.	Typ.	Max.	Unit	Note
Power supply voltage	VDD	-	5	-	V	1
LED life time	-	-	30000	-	Hr.	2

Note 1: VDD is supplied from Raspberry Pi directly.

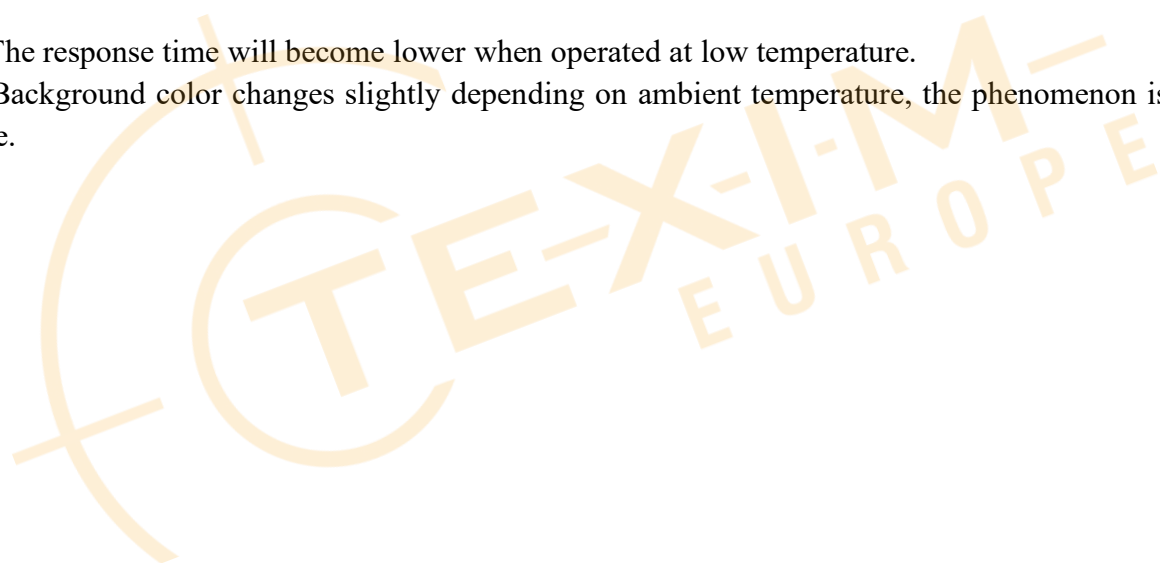
Note 2: The “LED life time” is defined as the module brightness decrease to 50% original brightness at Ta=25°C.

2.2 Environmental absolute maximum ratings

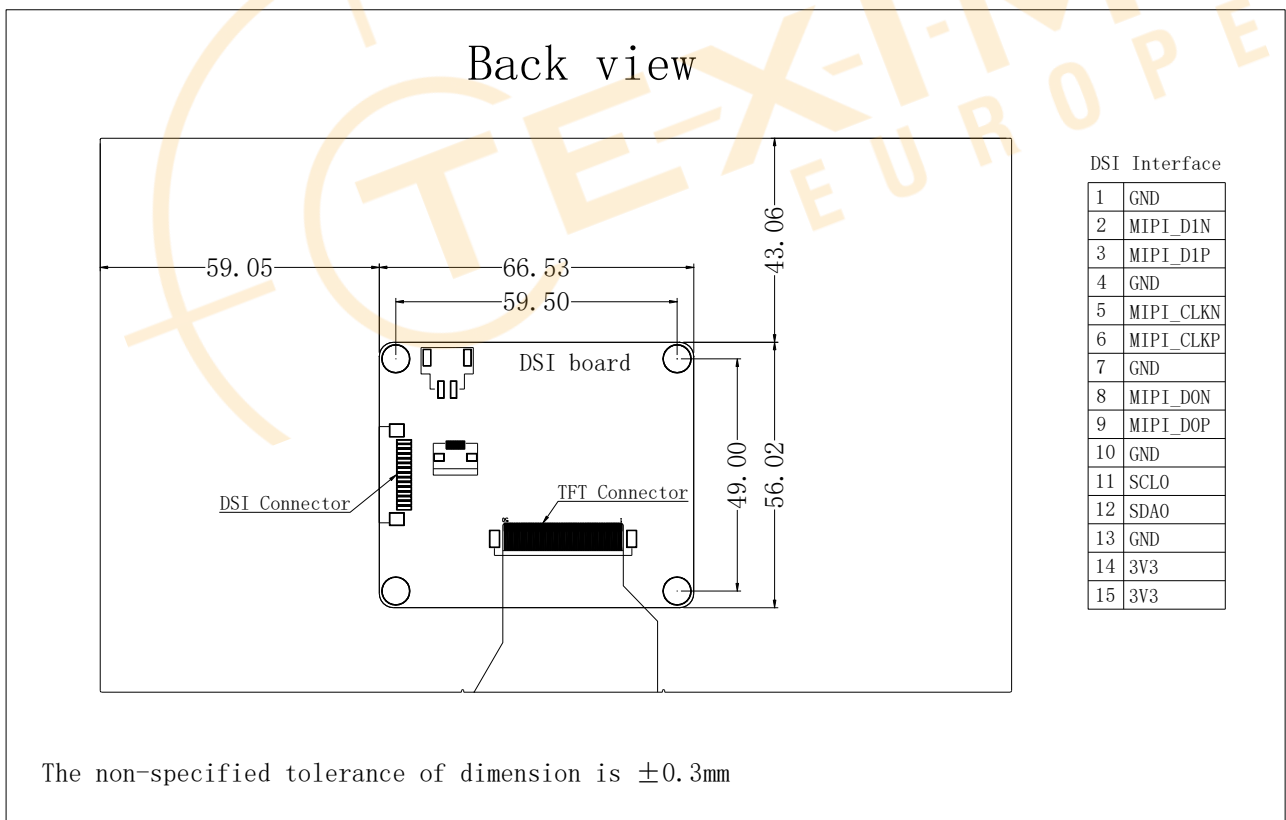
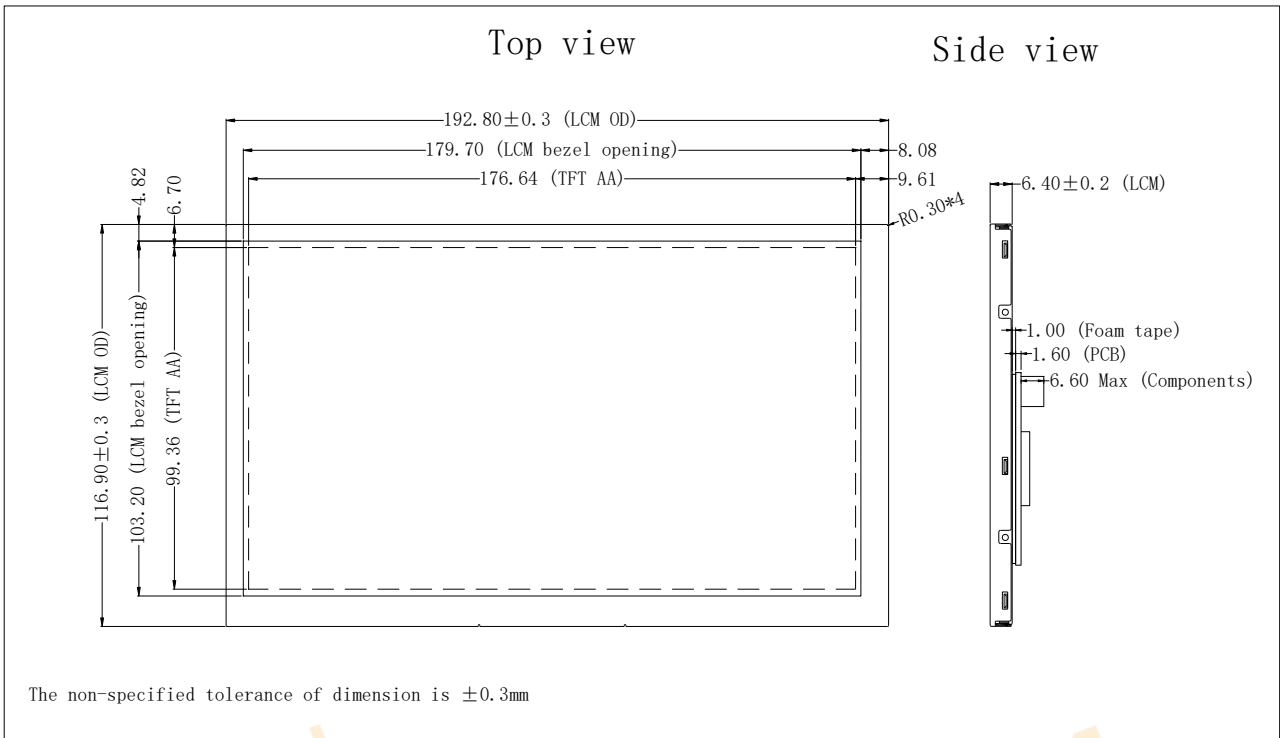
Item	Storage		Operating		Note
	Min.	Max.	Min.	Max.	
Ambient Temperature	-20°C	70°C	-10°C	60°C	1, 2

Note 1: The response time will become lower when operated at low temperature.

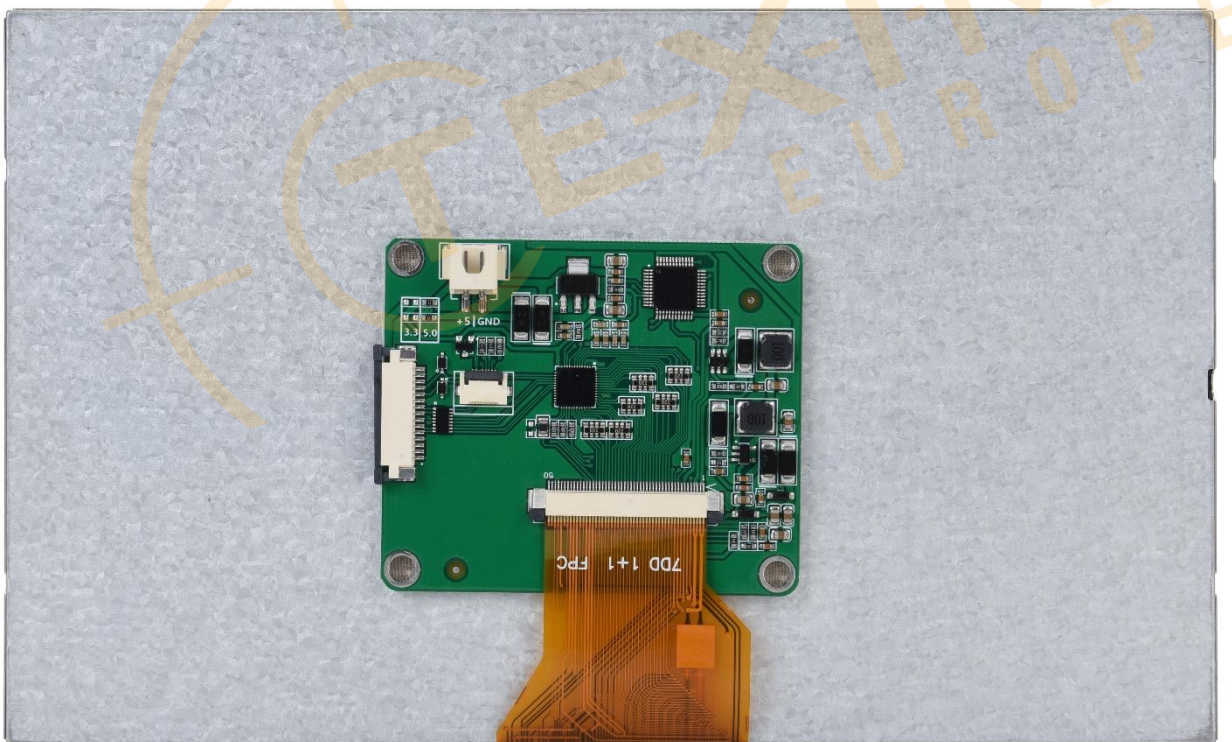
Note 2: Background color changes slightly depending on ambient temperature, the phenomenon is reversible.



3. Outline Drawing



4. Module Pictures



5. Packing Specification

Please consult our technical department for detail information.

The Netherlands



Elektrostraat 17
NL-7483 PG Haaksbergen

T: +31 (0)53 573 33 33
F: +31 (0)53 573 33 30
E: nl@texim-europe.com

Belgium



Zuiderlaan 14 bus 10
B-1731 Zellik

T: +32 (0)2 462 01 00
F: +32 (0)2 462 01 25
E: belgium@texim-europe.com

UK & Ireland



St. Mary's House, Church Lane
Carlton Le Moorland
Lincoln LN5 9HS

T: +44 (0)1522 789 555
F: +44 (0)845 299 22 26
E: uk@texim-europe.com

Germany North



Bahnhofstrasse 92
D-25451 Quickborn

T: +49 (0)4106 627 07-0
F: +49 (0)4106 627 07-20
E: germany@texim-europe.com

Germany South



Martin-Kollar-Strasse 9
D-81829 München

T: +49 (0)89 436 086-0
F: +49 (0)89 436 086-19
E: germany@texim-europe.com

Austria



Warwitzstrasse 9
A-5020 Salzburg

T: +43 (0)662 216 026
F: +43 (0)662 216 026-66
E: austria@texim-europe.com

Nordic region



Sdr. Jagtvej 12
DK-2970 Hørsholm

T: +45 88 20 26 30
F: +45 88 20 26 39
E: nordic@texim-europe.com

Italy



Via Matteotti 43
IT-20864 Agrate Brianza (MB)

T: +39 (0)39 971 3293
F: +39 (0)39 971 3293
E: italy@texim-europe.com

General information



info@texim-europe.com
www.texim-europe.com