



Data Sheet

Customer:

Product: Supercapacitor

Part No.: SC5V5Z155Z

Issued Date: 24-Dec-21

Edition: REV.A2



VIKING TECH CORPORATION
光韻科技股份有限公司
No.70, Kuanfu N. Rad.,
Hsin Chu Industrial Park,
Hukou Hsiang, Hsin Chu Hsien,
303, Taiwan
TEL:886-3-5972931
FAX:886-3-5972935•886-3-5973494
E-mail:sales@viking.com.tw

VIKING TECH CORPORATION KAOHSIUNG BRANCH
光韻科技股份有限公司高雄分公司
No.248-3, Sin-Sheng Rd., Cian-Jhen Dist., Kaohsiung,
806, Taiwan
TEL:886-7-8217999
FAX:886-7-8228229
E-mail:sales@viking.com.tw

VIKING ELECTRONICS (WUXI) CO., LTD.
光韻電子(無錫)有限公司
No.22 Xixia Road, Machinery & Industry Park,
National Hi-Tech Industrial Development Zone
of Wuxi, Wuxi, Jiangsu Province, China
Zip Code:214028
TEL:86-510-85203339
FAX:86-510-85203667•86-510-85203977
E-mail:china@viking.com.tw

Produced by (QC)	Checked (QC)	Approved by (QC)	Prepared by (Sales)	Accepted by (Customer)
24-Dec-21	24-Dec-21	24-Dec-21	24-Dec-21	
<i>Mandy Chen</i>	<i>Ben Chang</i>	<i>Ben Chang</i>		

Supercapacitor

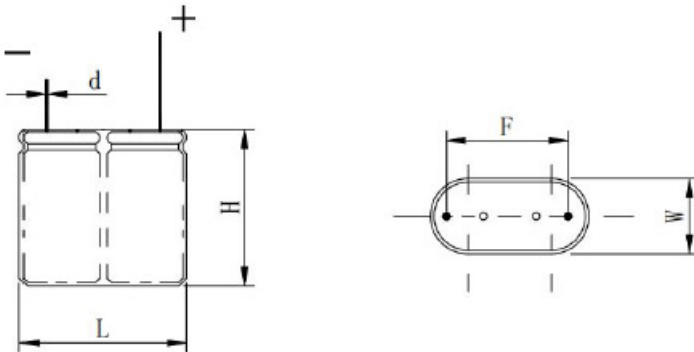
■ Features

- Low internal resistance and high power density
- Self-discharge rate is small, 72 hours self-discharge <20%
- Excellent cycle life, the coulomb efficiency is more than 95%
- Wide operating temperature range
- Green, meet RoHs requirements

■ Applications

- Intelligent Instrument, Automobile Data Recorder, Illumination Lamp
- Fiscal Cash Register, Digital Camera, Power Tools
- Wireless Energy Saving Mouse, Wireless Handwriting Board, SSD Solid State Drive

■ Dimensions



Part No.	L (mm)	W (mm)	H (mm)	F (mm)	d (mm)
SC5V5Z155Z	17±1.0	8±0.5	21±1.5	12±0.5	0.6±0.05

■ The actual size and tolerance shall be subject to the parameter table.

■ Product Identification

SC	5V5	Z	155	Z
Product Type	Rated Voltage	Structure	Capacitance	Capacitance Tolerance
	5V5: 5.5V	Z: Combined Type	155: 1.5F	Z: -20/+80%

■ Specifications

Part No.	Rated Voltage (V)	Rate Capacitance (F)	MAX ESR DC 25°C (mΩ)	Nominal Current (25°C, A)	Max Peak Current (25°C < 1s, A)	Leakage Current (25°C 72h, mA)
SC5V5Z155Z	5.5	1.5	240	0.77	3.03	0.015

■ Normal Current: Is the current taking 5 sec to discharge from U_R to $1/2 U_R$

■ Maximun Peak Current: Is the current taking 1 sec to discharge from U_R to $1/2 U_R$



Supercapacitor

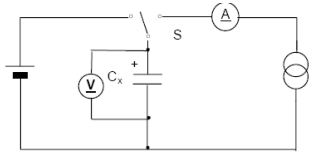
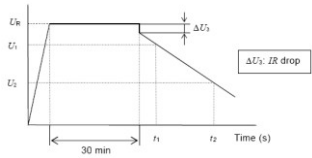
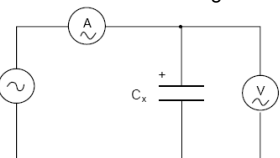
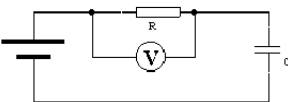
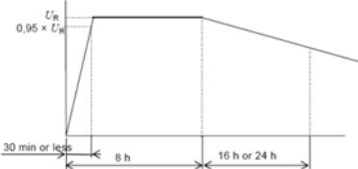
■ Environmental Characteristics

Item	Requirement	Test Conditions
Category temperature range	-40°C ~ +70°C	
Rated operating voltage	5.5V DC	
Capacitance	1.5F	I=8*CU _R (mA)
Permitting capacitance error	-20%~+80%	
Characteristics in Different Temperate	Step 2: ΔC: Less than or equal to 30% of the initial value ESR: Less than or equal to 400% of the initial value Step 3: ΔC: Less than or equal to 30% of the initial value ESR: Less than or equal to the initial value LC: Less than or equal to 4 times the initial value Step 4: ΔC: Satisfies the range of 20% of the initial rating ESR: Satisfies the initial value LC: Satisfies the initial value	Step 1: +25°C ±2°C Step 2: -40°C ±2°C Step 3: +70°C ±2°C Step 4: +25°C ±2°C
Endurance	ΔC: Satisfies the range of 30% of the initial rating ESR: Less than or equal to 4 times the initial value LC: Less than or equal to the initial measurement Appearance: No leakage or mechanical damage	Applied voltage: 5.5V Temperature: +70°C ±2°C Time: 1000h
Cycle life	ΔC: Satisfies the range of 30% of the initial rating ESR: Less than or equal to 4 times the initial value	Applied voltage: 5.5V Temperature: +25°C ±2°C Cycles: 500000
Lead strength	No damage to the outlet	
Solder ability	More than 3/4 of the terminal surface is covered by a tin layer	
Temperature cycle	ΔC / ESR / LC: Satisfies the initial value Appearance: No mechanical damage or leakage	Temperature cycle : -40°C ±2°C →normal temperature →+70°C ±2°C→ normal temperature Cycles : 5
Shelf life	ΔC: Satisfies the range of 20% of the initial rating ESR: Less than or equal to 3 times the initial value LC: Less than or equal to the initial measurement Appearance: No leakage or mechanical damage	Applied voltage : 0V Temperature : +70°C ±2°C Time: 1000h
Humidity Characteristics	ΔC: Satisfies the range of 30% of the initial rating ESR: Less than or equal to 2 times the initial value LC: Less than or equal to 4 times the initial value Appearance: No leakage or mechanical damage	Temperature : +40°C ±2°C Relative humidity : 90~95%RH Test time: 240h
Self Discharge Characteristics (Voltage Holding Characteristics)	Voltage between positive and negative poles ≥4.68V	Charging process: normal temperature, no load, rated voltage charge 24h Placement process: temperature less than or equal to 25°C , relative humidity less than 60% RH, open 24 h



Supercapacitor

Measuring Method

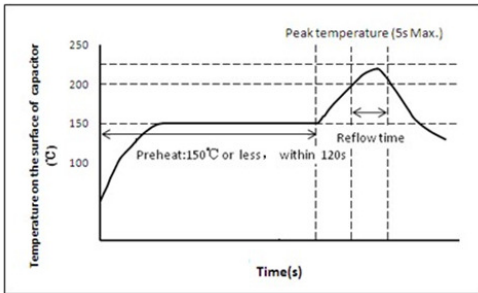
<p>Capacitance</p>	<p>Measurement by Permanent electrotransport:</p> <ol style="list-style-type: none"> 1.DC voltage of constant current/constant voltage source is set as rated voltage (UR) 2.Set the constant current value of the constant current discharge device. 3.Switch the switch S to dc power supply, and charge at constant voltage for 30min after the constant current/constant voltage source reaches the rated voltage. 4.After charging for 30min, switch S is changed to the constant exile device to discharge with constant current. 5.Measure the time t1 and t2 of the voltage from U1 to U2 at both ends of the capacitor, as shown in the figure, and calculate the capacitance value according to the following equation   $C = \frac{I \times (t_2 - t_1)}{U_1 - U_2}$
<p>Resistance</p>	<p>AC impedance measurements The circuit as shown in the figure below is used for measurement:</p>  <p>Capacitor resistance Ra shall be computed by the type:</p> $R_a = \frac{U}{I}$ <p>Ra ac impedance (Ω) Effective value of U ac voltage (V R.M.S) Effective value of I ac current (V R.M.S)</p>
<p>Leakage Current</p>	<p>DC leakage current measurement principle is as follows:</p>  <p>Discharge: before the measurement begins, the capacitor should be fully discharged. The discharge process lasts from 1h to 24h.</p> <ol style="list-style-type: none"> 2.Leakage current shall be measured at rated temperature and rated voltage (UR). The charging voltage reached 95% after the maximum 30min charging time. The charging time was selected from 30min ,1h , 2h , 4h , 8h ,12h , 24h , 48 , 72h and shall be specified in the detail specification. 3.Stable power supply, such as dc stabilized power supply, should be used 4. through the protection under 1000 Ω resistance to capacitor voltage.
<p>Self Discharge</p>	<p>Before the measurement begins, the capacitor should be fully discharged. The discharge process lasts from 1h to 24h, and the rated voltage U is directly applied across the capacitor.</p> <p>Without protection resistor, the charging time is 8h, including the maximum 30min charging time when the voltage reaches 95% of the applied voltage.</p> <p>The voltage source is disconnected. The capacitor should be placed under standard normal temperature and pressure conditions for 24h. The internal resistance of the DC voltmeter should be greater than 1MΩ</p> 



Supercapacitor

■ Soldering Condition

The welding condition of the proposed product is flow welding, as shown below:



Care should be taken when welding:

1. Carry out low-temperature welding in accordance with the above welding conditions within a short time
2. When the voltage is above 0.3v, do not backflow welding.
3. Please consult us for more conditions of reflow soldering.

■ Cautions For Use

1. Polarity problem of supercapacitor

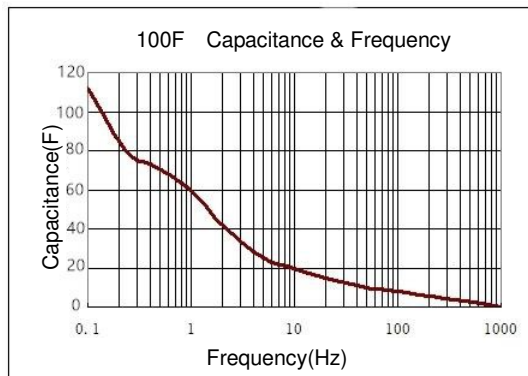
Unlike ordinary electrolytic capacitors or batteries, the anode and cathode of supercapacitors are made of the same material, so there is no polarity in theory. However, the polarity indicated by super capacitors is formulated by the manufacturer in the production process. When the capacitor is used carelessly in the short-term reverse operation, it will not cause substantial damage to the capacitor. If adjusted to a positive direction, it can be guaranteed to be used, but it cannot be used in the long-term reverse operation, which will result in the rapid attenuation of capacitor life characteristics.

2. On the issue of supercapacitor charging

Charging of supercapacitors requires dc voltage which does not exceed rated voltage, and various charging methods such as current limit, constant current, constant power and constant voltage can be adopted. Supercapacitors can be charged by lowering the voltage of the charging power supply until the capacitors are full enough to maintain voltage balance.

3. The problem of internal resistance and capacity of supercapacitors

In the process of charging and discharging, super capacitor resistance caused by the IR drop, lose efficiency of capacitor charging and discharging, so the size of capacitor resistance to a certain extent, determines the actor bad of character of capacitor, due to the internal resistance of the super capacitor than normal capacitors, in the process of communication charge and discharge circuit or high frequency, capacitor will fever, cause life decay quickly, which is the cause of the super capacitor only commonly used in dc. Compared with ordinary capacitors, supercapacitors have a larger time constant, so the charge-discharge time is relatively long, and because of this, it is not suitable for continuous large current to work frequently, which will cause rapid attenuation of the heating performance. The frequency characteristic of supercapacitors is that the response time of positive and negative ions in the micro pores of carbon electrode is long at high frequency. Instead of measuring capacitors' ac capacity, the mAh method based on battery measurement is used



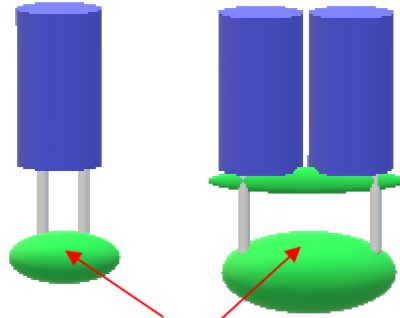
Supercapacitor

4. Transport and storage

Should prevent products be affected with damp be affected with damp in product transportation, storage temperature should be - 30 °C to 50 °C , relative humidity less than 60%, the maximum humidity no more than 85%, otherwise it will cause capacitance performance degradation of be affected with damp be affected with damp or rust. Shelf life: 6 months, at 18 ~ 28 °C , relative humidity 35 ~ 70%.

5. Installation and welding

When the supercapacitor is used on the double-sided circuit board, it should be noted that the reach of the capacitor, otherwise the product will be short circuit overvoltage and the capacitor will be damaged. During installation and after installation, do not twist or tilt the capacitor by force. Do not pull the lead by force. Break the needle and weld after bending. In the welding process to avoid overheating of the capacitor(1.6 mm of printed circuit board, the welding should be 260 °C , when time is not more than 5 s), after welding, circuit board and the capacitor to clean in the net.



此处尽量不要布线

6. Short circuit judgment of supercapacitor

The short circuit capacitance shall not be charged or discharged. The dc voltage shall be applied between the positive and negative terminals of the capacitance. The capacitance voltage shall not be increased when charging, it is normal to use ohm gauge (short circuit block) indicator as short circuit state. Capacitance is short circuit and it cannot be determined. It should be observed whether the resistance value increases or not.

7. Series and parallel operation problem

When the same super capacitor is used in series, the total voltage = series number * monomer withstand voltage; Total capacity = unit capacity Total energy = series number x monomer capacity, total internal resistance = series number x monomer resistance.

There is a problem of voltage balancing between three or more monomers in series, so it is necessary to consider adopting equalizing circuit to ensure that the capacitance cannot be used over voltage during long-term use, thus causing capacitor life attenuation and damage Supercapacitors of different specifications cannot be used in series.

When the super capacitors are used in parallel, they can be connected in parallel with different capacitance values and charged by the same voltage. However, it is necessary to pay attention to the current balance between the capacitors and to isolate each other, so as to avoid reverse charging due to the potential difference after discharge.

8. For other problems in use, please consult the manufacturer or refer to the relevant technical data of the instructions for the use of supercapacitors.

9. Handling of leakage situation:

Skin contact: rinse skin thoroughly with soap and water; Eye contact: flush with flowing water or normal saline and seek medical advice;

Absorb: immediately rinse with water and seek medical advice; If the supercapacitor is found to be overheating or smelling, the power supply and load connected to the supercapacitor should be disconnected immediately to cool it, and the supercapacitor should be treated properly so that no face or hand contact with the supercapacitor is allowed.

Package

Type	Plastic Bag	Inner Box
SC5V5Z155Z	500PCS	-





Headquarters & Warehouse

Elektrostraat 17
NL-7483 PG Haaksbergen
The Netherlands

T: +31 (0)53 573 33 33
E: info@texim-europe.com
Homepage: www.texim-europe.com



The Netherlands

Elektrostraat 17
NL-7483 PG Haaksbergen

T: +31 (0)53 573 33 33
E: nl@texim-europe.com



Belgium

Zuiderlaan 14, box 10
B-1731 Zellik

T: +32 (0)2 462 01 00
E: belgium@texim-europe.com



UK & Ireland

St Mary's House, Church Lane
Carlton Le Moorland
Lincoln LN5 9HS

T: +44 (0)1522 789 555
E: uk@texim-europe.com



Germany - North

Bahnhofstrasse 92
D-25451 Quickborn

T: +49 (0)4106 627 07-0
E: germany@texim-europe.com



Germany - South

Martin-Kollar-Strasse 9
D-81829 München

T: +49 (0)89 436 086-0
E: muenchen@texim-europe.com



Austria

Warwitzstrasse 9
A-5020 Salzburg

T: +43 (0)662 216 026
E: austria@texim-europe.com



Nordic

Søndre Jagtvej 12
DK-2970 Hørsholm

T: +45 88 20 26 30
E: nordic@texim-europe.com



Italy

Via Matteotti 43
IT-20864 Agrate Brianza (MB)

T: +39 (0)39 9713293
E: italy@texim-europe.com