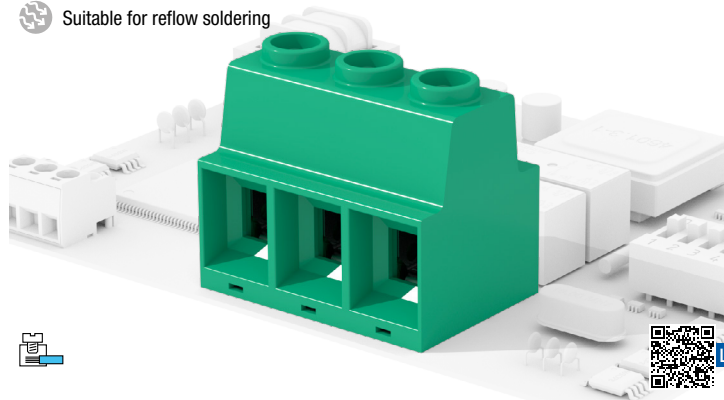


Suitable for reflow soldering



### General data

<b>Dimensional class:</b>	high
<b>Standard colour:</b>	green
<b>Pitches:</b>	metric 15 mm (.591 in)
<b>Screw dimension:</b>	M5
<b>Recommended/highest tightening torque:</b>	2.1/2.5 Nm (18.59/22.13 lbf-in)
<b>PCB thickness:</b>	max. 2.4 mm (.094 in)
<b>PCB hole diameter:</b>	min. 1.6 mm (.063 in)
<b>Stripping length:</b>	18 mm (.71 in)
<b>Operating temperature range</b>	-40 °C ÷ +105 °C (-40 °F ÷ +221 °F)
<b>Contact resistance:</b>	<15 mΩ
<b>Insulating material group:</b>	I (CTI ≥ 600V)
<b>Self-extinguishing class UL94:</b>	V0
<b>Insulation resistance:</b>	>10 <sup>9</sup> Ω (500V DC)

### Certifications

135 A

UL (n. E167473)  
600 V - 135 A factory wiring (130 A field wiring) - 20±1 AWG

### Data according to

IEC EN 60947-7-4  
1000 V - 125 A - 35 mm<sup>2</sup>

Application values for end-use equipment have to be in accordance to norms and applicable to it. The certifications of some product's versions could be pending, for more detailed and updated data please refer to our web site [www.sauro.net](http://www.sauro.net) or your representative Sales Manager.

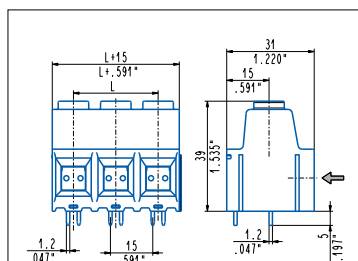
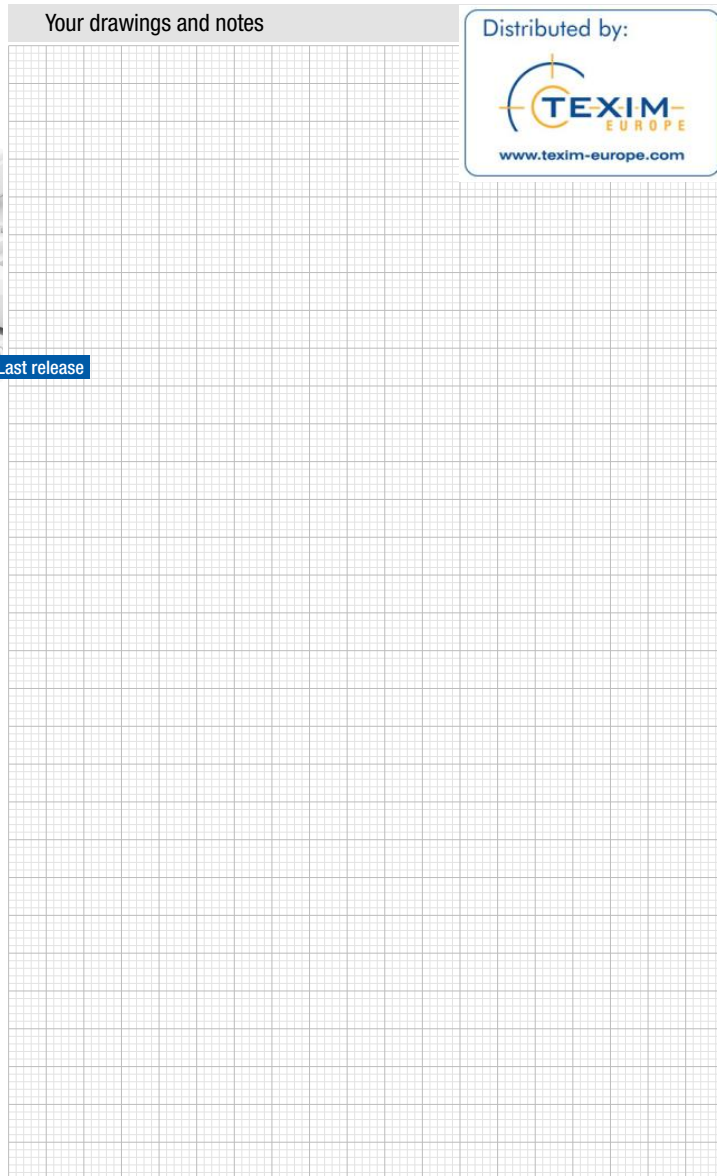
A higher number of poles is obtained by combining together **modular** parts.

Last release

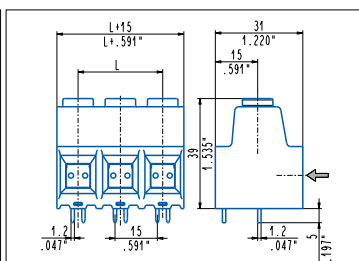
Distributed by:



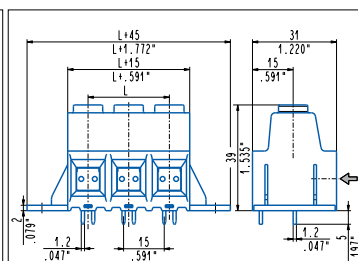
[www.texim-europe.com](http://www.texim-europe.com)



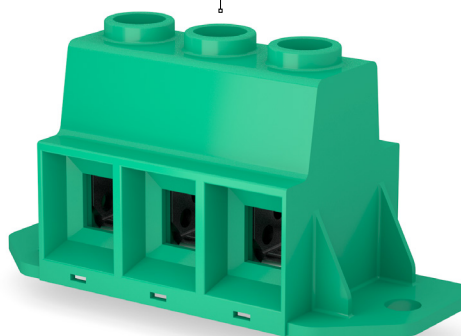
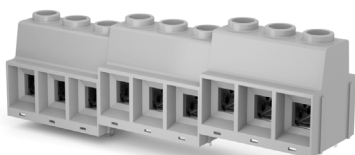
**0°, modular**  
MPP\_DOQ 2÷8 poles, 15 mm .591" pitch



**0°, side stackable**  
MPP\_DAQ 2÷8 poles, 15 mm .591" pitch



**0°, mounting flanges**  
MPP\_DVQ 1÷8 poles, 15 mm .591" pitch





## Headquarters & Warehouse

Elektrostraat 17  
NL-7483 PG Haaksbergen  
The Netherlands

T: +31 (0)53 573 33 33  
E: info@texim-europe.com  
Homepage: www.texim-europe.com



### The Netherlands

Elektrostraat 17  
NL-7483 PG Haaksbergen

T: +31 (0)53 573 33 33  
E: nl@texim-europe.com



### Belgium

Zuiderlaan 14, box 10  
B-1731 Zellik

T: +32 (0)2 462 01 00  
E: belgium@texim-europe.com



### UK & Ireland

St Mary's House, Church Lane  
Carlton Le Moorland  
Lincoln LN5 9HS

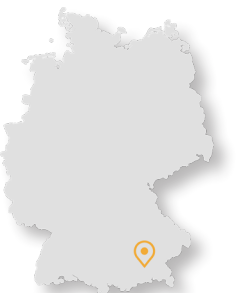
T: +44 (0)1522 789 555  
E: uk@texim-europe.com



### Germany - North

Bahnhofstrasse 92  
D-25451 Quickborn

T: +49 (0)4106 627 07-0  
E: germany@texim-europe.com



### Germany - South

Martin-Kollar-Strasse 9  
D-81829 München

T: +49 (0)89 436 086-0  
E: muenchen@texim-europe.com



### Austria

Warwitzstrasse 9  
A-5020 Salzburg

T: +43 (0)662 216 026  
E: austria@texim-europe.com



### Nordic

Søndre Jagtvej 12  
DK-2970 Hørsholm

T: +45 88 20 26 30  
E: nordic@texim-europe.com



### Italy

Via Matteotti 43  
IT-20864 Agrate Brianza (MB)

T: +39 (0)39 9713293  
E: italy@texim-europe.com