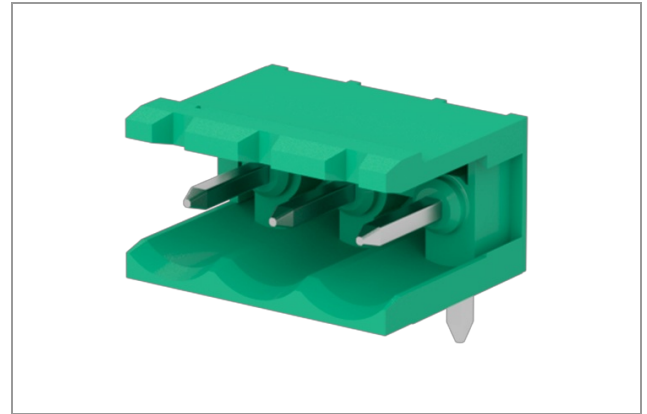


CIM029M1 - Header

Number of poles: 2, 16A, 2.5mm², 300V, Pitch 5 mm,
Modular, Connection Angle 90, Green (RAL 6032), Soldering
technology Wave, UL, VDE, IMQ, CSA



Number of poles:	2
Number of levels:	1
Sides configuration:	Modular
Pitch:	5 mm
Voltage:	300 V
Current :	16 A
Wire section:	0.05 ÷ 2.5 mm ²
Available approvals:	UL, VDE, IMQ, CSA

General Data

Features

Screw dimension	na
Operating temperature range	-40°C ÷ 105°C
Contact resistance	<15 mOhm
Insulation resistance	>1 GOhm

Certifications

CSA (n.LR 102896)

Rated voltage	300 V
Nominal current	15 A
Wire section	0

IMQ (n.EM672)

Rated voltage	300 V		
Nominal current	12 A		
Wire section	2.5 mm ²		
Insulating category	I		
Overvoltage category/Pollution degree	III/3	III/2	II/2
Impulse voltage	4kV	4kV	4kV
Rated voltage	250V	300V	600V
Insulation voltage	250V	320V	630V

UL (n.E167473)

Usage Group	B	C	D*
Rated voltage	300 V	-	300 V
Nominal current	15 A		
Wire section	0		

* These limited ratings are applicable to a terminal block for use in or with industrial control equipment whereby the load on any single circuit of the terminal block does not exceed 15A at 51-150V, 10A at 151-300V, or 5A at 301-600V, or the maximum ampere rating, whichever is less.

VDE (n.40027448 Reg.-Nr. 112754)

Rated voltage	250 V		
Nominal current	16 A		
Wire section	0		
Insulating category	III		
Overvoltage category/Pollution degree	III/3	III/2	II/2

Materials

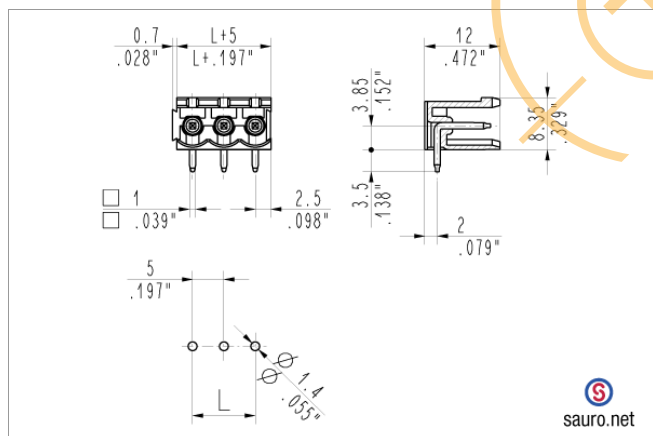
Components

Terminal contact	Nickel and tin on copper alloy
NA	NA
Insulating housing material	PA Polyamide
Insulating material group	I (CTI \geq 600V)
Self-extinguishing class UL94	V0

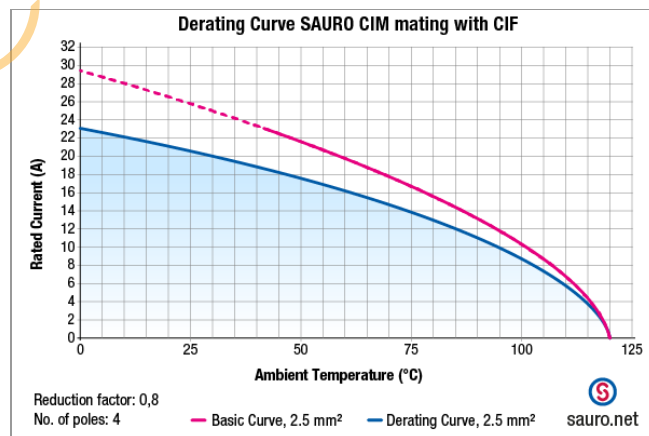
Available colors

green	(similar to RAL 6032)
black	(similar to RAL 9005)
light grey	(similar to RAL 7035)
dark gray	(similar to RAL 7040)
orange	(similar to RAL 2003)
blue	(similar to RAL 5012)
red	(similar to RAL 3017)
another colors	(on demand)

Technical drawing



Derating curve





Headquarters & Warehouse

Elektrostraat 17
NL-7483 PG Haaksbergen
The Netherlands

T: +31 (0)53 573 33 33
E: info@texim-europe.com
Homepage: www.texim-europe.com



The Netherlands

Elektrostraat 17
NL-7483 PG Haaksbergen

T: +31 (0)53 573 33 33
E: nl@texim-europe.com



Belgium

Zuiderlaan 14, box 10
B-1731 Zellik

T: +32 (0)2 462 01 00
E: belgium@texim-europe.com



UK & Ireland

St Mary's House, Church Lane
Carlton Le Moorland
Lincoln LN5 9HS

T: +44 (0)1522 789 555
E: uk@texim-europe.com



Germany - North

Bahnhofstrasse 92
D-25451 Quickborn

T: +49 (0)4106 627 07-0
E: germany@texim-europe.com



Germany - South

Martin-Kollar-Strasse 9
D-81829 München

T: +49 (0)89 436 086-0
E: muenchen@texim-europe.com



Austria

Warwitzstrasse 9
A-5020 Salzburg

T: +43 (0)662 216 026
E: austria@texim-europe.com



Nordic

Søndre Jagtvej 12
DK-2970 Hørsholm

T: +45 88 20 26 30
E: nordic@texim-europe.com



Italy

Via Matteotti 43
IT-20864 Agrate Brianza (MB)

T: +39 (0)39 9713293
E: italy@texim-europe.com