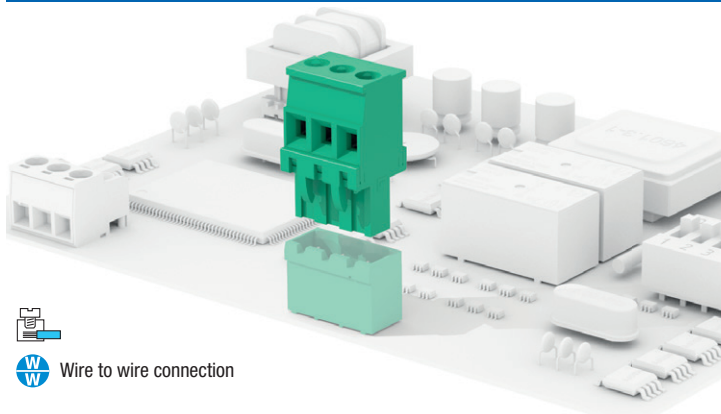


Distributed by:



Wire to wire connection

General data

Dimensional class:	medium
Standard colour:	green
Pitches:	metric 5 mm, 7.5 mm, 10 mm (.197 in, .295 in, .394 in) imperial 5.08, 7.62, 10.16 mm (.200, .300, .400 in)
Screw dimension:	M3
Recommended/Highest tightening torque:	0.5/0.6 Nm (4.42/5.3 lbf-in)
Stripping length:	6 ÷ 7.5 mm (.24 ÷ .30 in)
Operating temperature range:	-40 °C ÷ +105 °C (-40 °F ÷ +221 °F)
Contact resistance:	<15 mΩ
Insulation resistance:	>10 ⁹ Ω (500V DC)
Insulating material group:	I (CTI ≥ 600V)

Certifications

UL (n. E167473)

300 V - 15 A - 30÷12 AWG - 7lbf-in for 5 mm, 5.08 mm, 7.5 mm and 7.62 mm pitch
600 V - 15 A - 30÷12 AWG - 7lbf-in for 10 mm and 10.16 mm pitch

VDE (n. 40027448)

250 V - 16 A - 2.5 mm² - T100 - 2.5kV - 2 for 5 mm and 5.08 mm pitch
500 V - 16 A - 2.5 mm² - T100 - 4kV - 2 for 7.5 mm and 7.62 mm pitch
750 V - 16 A - 2.5 mm² - T100 - 6kV - 2 for 10 mm and 10.16 mm pitch

IMQ (n. EM672)

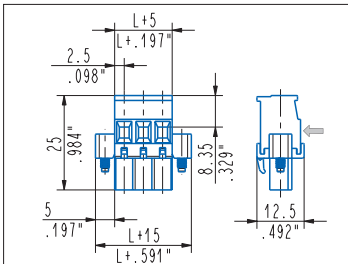
300 V - 12 A - 2.5 mm² - T110 - 4kV - III/2 - 2.5 mm² for 5 mm and 5.08 mm pitch
600 V - 12 A - 2.5 mm² - T110 - 8kV - III/2 - 2.5 mm² for 7.5 mm and 7.62 mm pitch
1000 V - 12 A - 2.5 mm² - T110 - 8kV - III/2 - 2.5 mm² for 10 mm and 10.16 mm pitch

CSA (n. LR102896)

300 V - 15 A - 30÷12 AWG for 5 mm, 5.08 mm, 7.5 mm and 7.62 mm pitch
600 V - 15 A - 30÷12 AWG for 10 mm and 10.16 mm pitch

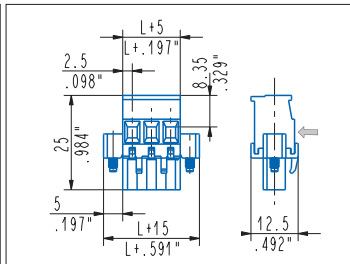
Application values for end-use equipment have to be in accordance to norms and applicable to it. The certifications of some product's versions could be pending, for more detailed and updated data please refer to our web site www.sauro.net or your representative Sales Manager

Please see "CONNECTORS COMBINATIONS"



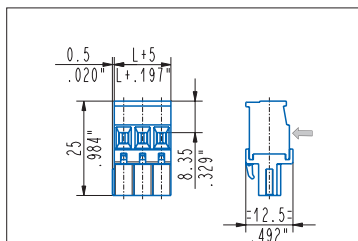
Left, locking screw flanges, female

- CVF_OS1** - 2 ÷ 8 poles, 5 mm / .197" pitch
- CVF_OS2** - 2 ÷ 4 poles, 10 mm / .394" pitch
- CVF_OS5** - 2 ÷ 23 poles, 5.08 mm / .200" pitch
- CVF_OS7** - 2 ÷ 12 poles, 7.62 mm / .300" pitch
- CVF_OS6** - 2 ÷ 12 poles, 10.16 mm / .400" pitch



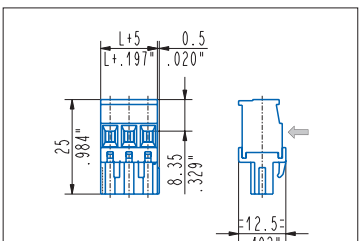
Right, locking screw flanges, female

- CVF_OD1** - 2 ÷ 8 poles, 5 mm / .197" pitch
- CVF_OD2** - 2 ÷ 4 poles, 10 mm / .394" pitch
- CVF_OD5** - 2 ÷ 23 poles, 5.08 mm / .200" pitch
- CVF_OD7** - 2 ÷ 12 poles, 7.62 mm / .300" pitch
- CVF_OD6** - 2 ÷ 12 poles, 10.16 mm / .400" pitch



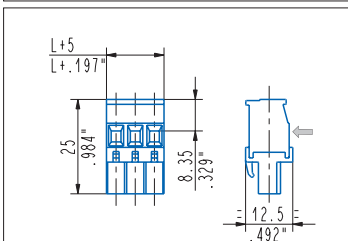
Left, modular, female

- CVF_OW1** - 2 ÷ 25 poles, 5 mm / .197" pitch
- CVF_OW2** - 1 ÷ 13 poles, 10 mm / .394" pitch
- CVF_OW5** - 2 ÷ 25 poles, 5.08 mm / .200" pitch
- CVF_OW6** - 1 ÷ 13 poles, 10.16 mm / .400" pitch



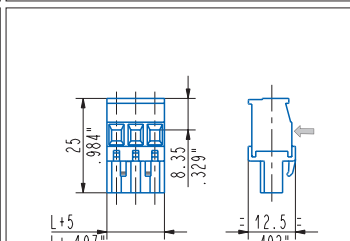
Right, modular, female

- CVF_OM1** - 2 ÷ 25 poles, 5 mm / .197" pitch
- CVF_OM2** - 1 ÷ 13 poles, 10 mm / .394" pitch
- CVF_OM5** - 2 ÷ 25 poles, 5.08 mm / .200" pitch
- CVF_OM6** - 1 ÷ 13 poles, 10.16 mm / .400" pitch



Left, side stackable, female

- CVF_OL1** - 2 ÷ 25 poles, 5 mm / .197" pitch
- CVF_OL3** - 2 ÷ 12 poles, 7.5 mm / .295" pitch
- CVF_OL2** - 2 ÷ 13 poles, 10 mm / .394" pitch
- CVF_OL5** - 2 ÷ 25 poles, 5.08 mm / .200" pitch
- CVF_OL7** - 2 ÷ 12 poles, 7.62 mm / .300" pitch
- CVF_OL6** - 2 ÷ 13 poles, 10.16 mm / .400" pitch

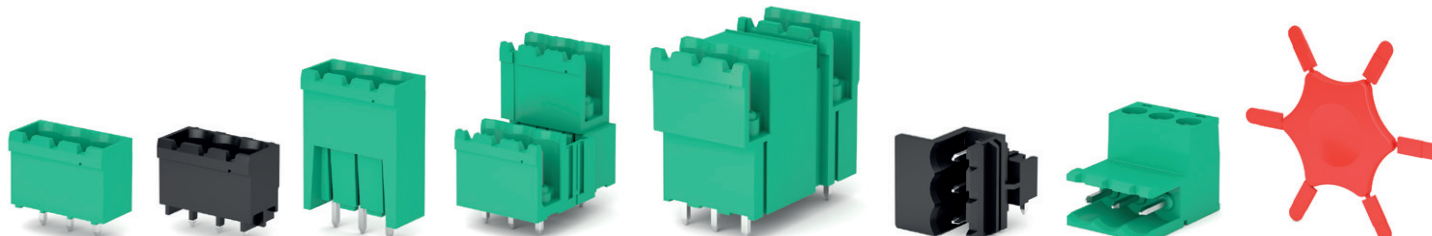


Right, side stackable, female

- CVF_OR1** - 2 ÷ 25 poles, 5 mm / .197" pitch
- CVF_OR3** - 2 ÷ 12 poles, 7.5 mm / .295" pitch
- CVF_OR2** - 2 ÷ 13 poles, 10 mm / .394" pitch
- CVF_OR5** - 2 ÷ 25 poles, 5.08 mm / .200" pitch
- CVF_OR7** - 2 ÷ 12 poles, 7.62 mm / .300" pitch
- CVF_OR6** - 2 ÷ 13 poles, 10.16 mm / .400" pitch

Usable with:

- | | | | | | | | |
|------------|-------------|-----------------|-----------------|------------|-------------------|------------|----------------|
| CIM | CIMH | CPM high | CPM/CPMH | CRM | CIMH normo | CGM | CIF-LC1 |
| Page 73 | Page 75 | Page 77 | Page 78 | Page 79 | Page 80 | Page 81 | Page 84 |



The Netherlands



Elektrostraat 17
NL-7483 PG Haaksbergen

T: +31 (0)53 573 33 33
F: +31 (0)53 573 33 30
E: nl@texim-europe.com

Belgium



Zuiderlaan 14 bus 10
B-1731 Zellik

T: +32 (0)2 462 01 00
F: +32 (0)2 462 01 25
E: belgium@texim-europe.com

UK & Ireland



St. Mary's House, Church Lane
Carlton Le Moorland
Lincoln LN5 9HS

T: +44 (0)1522 789 555
F: +44 (0)845 299 22 26
E: uk@texim-europe.com

Germany North



Bahnhofstrasse 92
D-25451 Quickborn

T: +49 (0)4106 627 07-0
F: +49 (0)4106 627 07-20
E: germany@texim-europe.com

Germany South



Martin-Kollar-Strasse 9
D-81829 München

T: +49 (0)89 436 086-0
F: +49 (0)89 436 086-19
E: germany@texim-europe.com

Austria



Warwitzstrasse 9
A-5020 Salzburg

T: +43 (0)662 216 026
F: +43 (0)662 216 026-66
E: austria@texim-europe.com

Nordic region



Sdr. Jagtvej 12
DK-2970 Hørsholm

T: +45 88 20 26 30
F: +45 88 20 26 39
E: nordic@texim-europe.com

Italy



Via Matteotti 43
IT-20864 Agrate Brianza (MB)

T: +39 (0)39 971 3293
F: +39 (0)39 971 3293
E: italy@texim-europe.com

General information



info@texim-europe.com
www.texim-europe.com