



# Chefree Technology Corp.

## TFT COLOR LCD MODULE

MODEL: CH101ILHLWN-CT1

(Complied with RoHS)

WXGA  
LVDS interface

Version: P02

Customer : _____
Approved By : _____
Date: _____

CHEFREE		
APPROVAL	CHECKER	PREPARE
Tim	Mark	Benson

## **C O N T E N T S**

1. RECORD OF REVISION.....	1
2. MECHANICAL SPECIFICATIONS .....	2
3. OUTLINE DIMENSIONS .....	3
4. INTERFACE PIN CONNECTION .....	4
5. BLOCK DIAGRAM.....	7
6. ABSOLUTE MAXIMUM RATINGS .....	8
7. ELECTRICAL CHARACTERISTICS.....	9
8. OPTICAL CHARACTERISTICS.....	11
9. TOUCH PANEL SPECIFICATIONS .....	13
10. TIMING SPECIFICATIONS .....	14
11. RELIABILITY TEST .....	15
12. LCM INSPECTION STANDARD.....	16
13. PACKAGE INFORMATION.....	16
14. PRECAUTIONS FOR USE.....	17



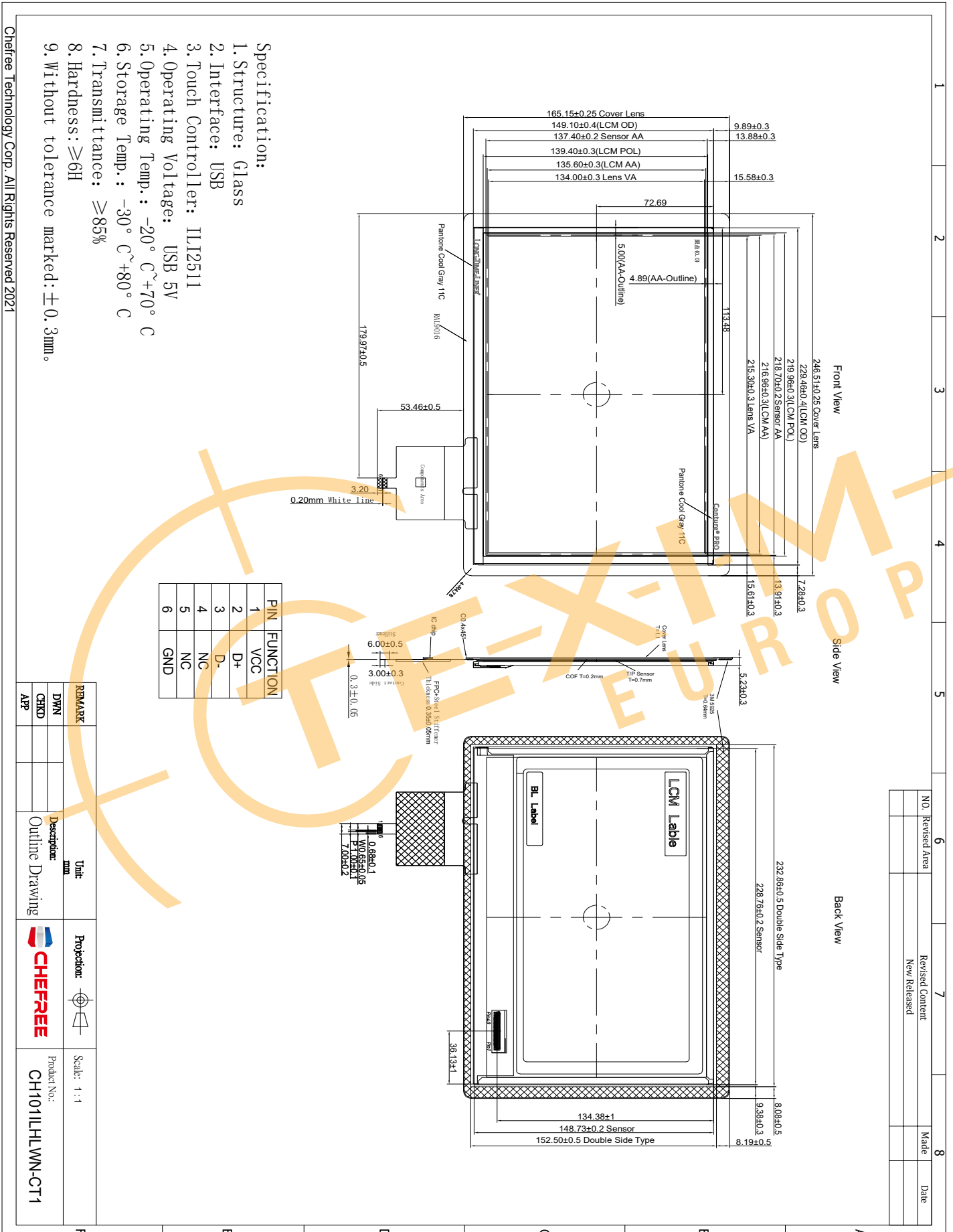
## 1. RECORD OF REVISION

Rev	DATE	PAGE	SUMMARY
P00	2021.03.08	ALL	Preliminary specification was first issued.
P01	2021.06.08	3	Modify View area for TP Cover lens
P02	2021.08.10	3	Updated drawing for Logo

**2. MECHANICAL SPECIFICATIONS**

(1)	Number of Dots	1280(R.G.B) x 800
(2)	Module Size(mm)	246.51(H) x 165.15(V) x 7.16 (D)
(3)	Active Area(mm)	216.96(H) x 135.6(V)
(4)	Pixel Pitch(mm)	0.1695(H) x 0.1695(V)
(5)	LCD Model	TFT, Transmissive, Normally Black
(6)	Backlight Color	White, LED
(7)	Viewing Direction	All
(8)	Electrical Interface	LVDS Interface
(9)	Color Configuration	R.G.B Vertical Stripe
(10)	Touch Panel Mode	Projected Capacitive Touch Panel
(11)	Module Weight(g)	TBD

## 3. OUTLINE DIMENSIONS



## 4. INTERFACE PIN CONNECTION

### 4.1 TFT LCM PANEL PIN DEFINE

CN1 Connector : IPEX / 20455-040E-66 or Equivalent

PIN NO.	Definition	I/O	Description	Remark
1	NC	-	No Connection	
2	VDD	P	Power Supply	
3	VDD	P	Power Supply	
4	VDD_EDID	P	VDD_EDID	
5	SCL_EDID	I	SCL_EDID	
6	SDA_EDID	I	SDA_EDID	
7	NC	-	No Connection	
8	LV0N	-	Negative LVDS Differential Data Input	
9	LV0P	-	Positive LVDS Differential Data Input	
10	GND	P	Ground	
11	LV1N	I	Negative LVDS Differential Data Input	
12	LV1P	I	Positive LVDS Differential Data Input	
13	GND	P	Ground	
14	LV2N	I	Negative LVDS Differential Data Input	
15	LV2P	I	Positive LVDS Differential Data Input	
16	GND	P	Ground	
17	LVCLKN	I	Negative LVDS Differential Clock Input	
18	LVCLKP	I	Positive LVDS Differential Clock Input	
19	GND	P	Ground	
20	LV3N	I	Negative LVDS Differential Data Input	
21	LV3P	I	Positive LVDS Differential Data Input	
22	GND	P	Ground	
23	LED_GND	P	Ground for LED Driving	
24	LED_GND	P	Ground for LED Driving	
25	LED_GND	P	Ground for LED Driving	
26	NC	-	No connection	
27	LED_PWM	I	PWM Input Signal for LED Driver	
28	LED_EN	I	LED Enable Pin	
29	NC	-	No connection	
30	NC	-	No connection	
31	LED_VCC	P	Power Supply for LED Driver	
32	LED_VCC	P	Power Supply for LED Driver	
33	LED_VCC	P	Power Supply for LED Driver	
34	NC	-	No connection	
35	BIST	I	LCD Panel Self Test Enable, When it is not used, please don't connect to GND, connecting to Normal High(3.3V) is recommended	

36	NC	-	No connection	
37	NC	-	No connection	
38	NC	-	No connection	
39	NC	-	No connection	
40	NC	-	No connection	

Note : 'P' stand for Power, ' I ' stand for Input



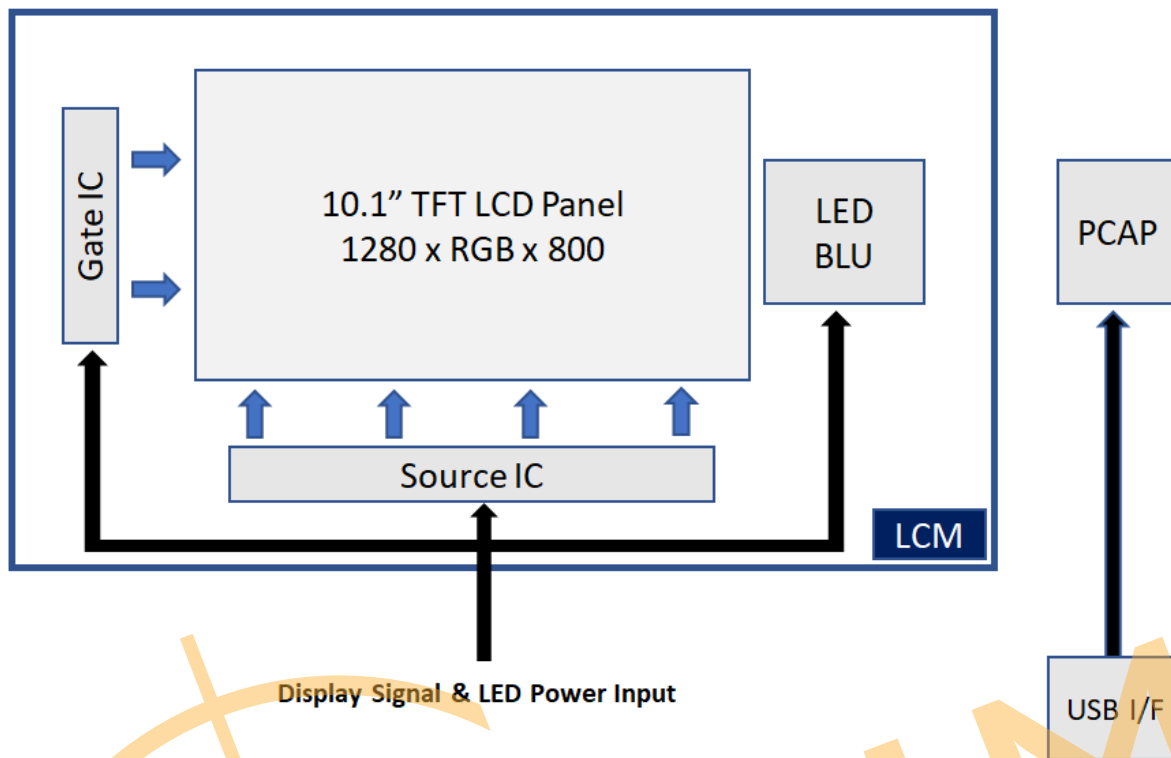
**4.2 CTP Pin Define :**

PIN NO.	Definition
1	VCC
2	D+
3	D-
4	NC
5	NC
6	GND





### 5. BLOCK DIAGRAM



## 6. ABSOLUTE MAXIMUM RATINGS

### 6.1 ELECTRICAL ABSOLUTE MAXIMUM RATINGS

ITEM	SYMBOL	MIN.	MAX.	UNIT	REMARK
Power Supply Voltage	VDD	-0.3	4.0	V	
Power Supply Voltage	VLED	0.2	21	V	
Power Voltage For CTP	VCC	0.2	5.0	V	

Note : The absolute maximum rating values of this product not allowed to be Exceeded at any times. Should be module be used with any of absolute maximum ratings exceeded. The characteristics of the module may not be recovered, or in an extreme case, the module may be permanently destroyed.

### 6.2 ENVIRONMENTAL ABSOLUTE MAXIMUM RATINGS

ITEM	OPERATING		STORAGE		REMARK
	MIN.	MAX.	MIN.	MAX.	
Ambient Temperature(°C)	-20	70	-30	80	Note 1,2
Humidity(% RH)	10~90(Note3)		10~90(Note 3)		-

Note 1 : The response time will become lower when operated at low temperature.

Note 2 : Background color changes slightly depending on ambient temperature.

Note 3 : Storage Ta=40°C & RH=90% ≤ 96Hrs

## 7. ELECTRICAL CHARACTERISTICS

### 7.1 ELECTRICAL CHARACTERISTICS OF LCD

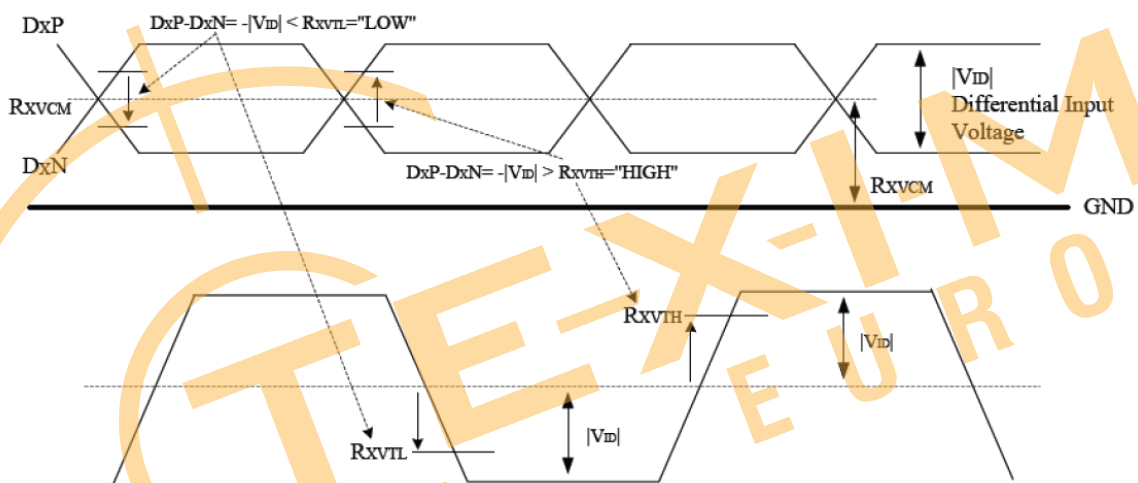
Ta=25°C

ITEM	SYMBOL	MIN.	TYP.	MAX.	UNIT	REMARK
Power Voltage For LCD	VDD	3.0	3.3	3.6	V	
	IDD	-	TBD	-	mA	Note1
Differential Input Threshold	VTH	100	200	300	mV	Note2
	VTL	-300	-200	-100	mV	
Magnitude Differential Input	V <sub>ID</sub>	200		600	mV	
Common Mode Voltage	V <sub>CM</sub>	1	1.2	1.4	V	

Note 1 : Test Condition: VDD=3.3V ; Test Pattern: Black.

Note 2 : VTH and VTL is defined in LV0N/P 、LV1N/P 、LV2N/P 、LV3N/P 、LVCLKN/P signal voltage level.

Single-end Signals



## 7.2 BACKLIGHT UNITS

Ta=25°C

ITEM		SYMBOL	MIN.	TYP.	MAX.	UNIT	REMARK
LED Driving Voltage		VLED	6	12	21	V	
LED Driving Current		PLED	-		2.5	W	
LED Life Time		-	20,000	30,000	-	Hrs	
PWM signal Voltage	High	VPWM	3	-	3.6	V	
	Low		0	-	0.4	V	
LED enable Voltage	High	VLED_EN	3	-	3.6		
	Low		0	-	0.4		
ADJ Frequency		-	100	-	30K	Hz	

## 7.3 CTP ELECTRICAL CHARACTERISTICS

ITEM	SYMBOL	MIN.	TYP.	MAX.	UNIT	REMARK
Power Voltage For PCAP	VCC	-	5.0	-	V	

## 8. OPTICAL CHARACTERISTICS

Ta=25°C

ITEM	SYMBOL	CONDITIONS	MIN.	TYP.	MAX.	UNIT	REMARK
Contrast Ratio	CR	Viewing Normal Angle $\Theta_x = \Theta_y = 0^\circ$	600	800	-	-	Note 1
Response Time	TR+TF		-	25	50	ms	Note 2
Chromaticity	White	x	-0.03	0.313	+0.03	-	Note 4
		y	-0.03	0.329	+0.03	-	
Viewing Angle	Hor.	$\theta_{x+}$	75	85	-	Deg.	Note 3
		$\theta_{x-}$	75	85	-		
	Ver.	$\theta_{y+}$	75	85	-		
		$\theta_{y-}$	75	85	-		
Luminance	L	PWM=100%	240	280	-	cd/m <sup>2</sup>	Center
Luminance Uniformity	YU		70	75	-	%	Note 5

Note 1 : Definition of Contrast Ratio (CR) :

The contrast ratio can be calculated by the following expression.

$$\text{Contrast Ratio (CR)} = L_{63}/L_0$$

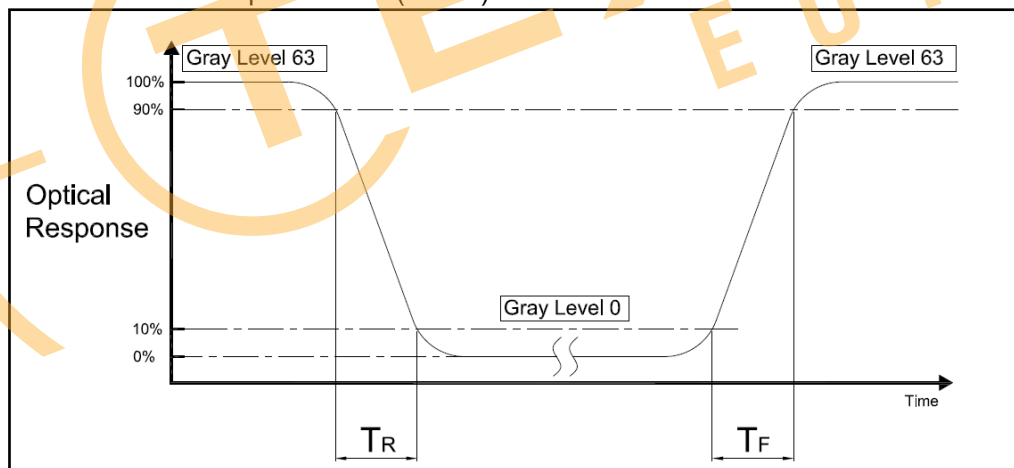
L63 : Luminance of gray level 63

L0 : Luminance of gray level 0

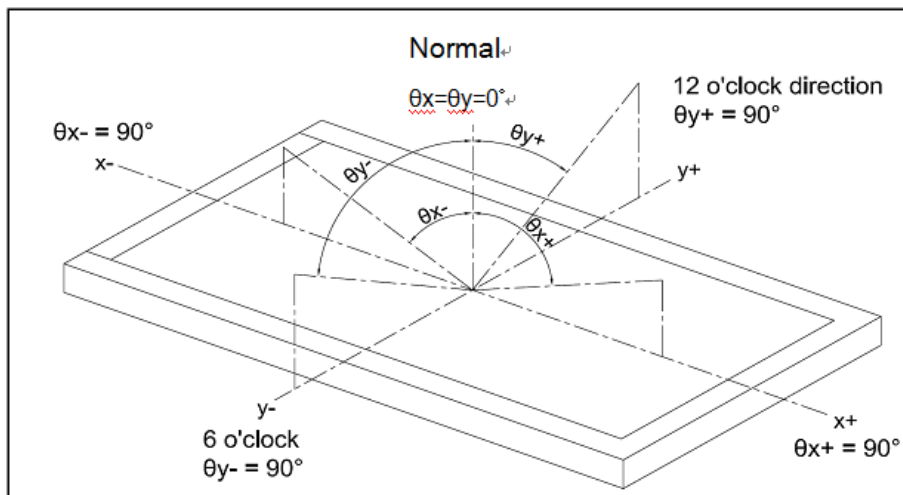
$$\text{CR} = \text{CR}(5)$$

CR(X) is corresponding to the Contrast Ratio of the point X at Figure in Note 5

Note 2 : Definition of Response Time (TR,TF)

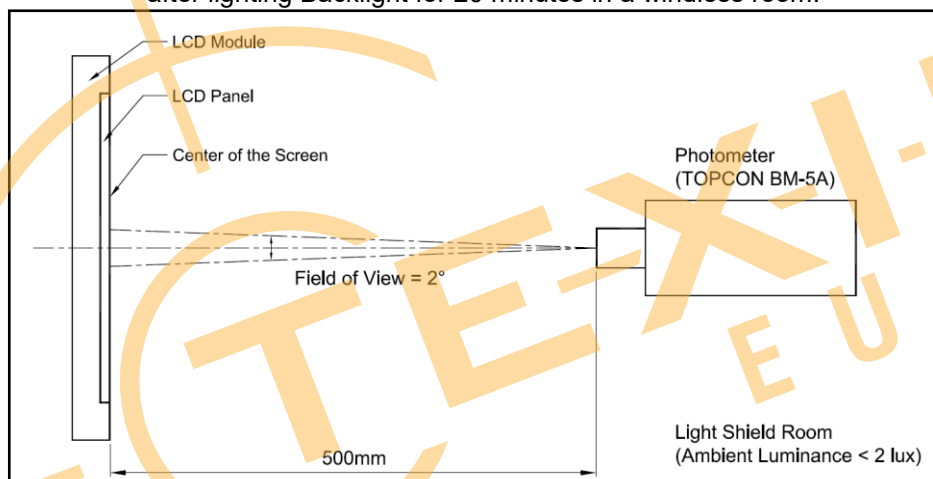


Note 3 : Definition of Viewing Angle

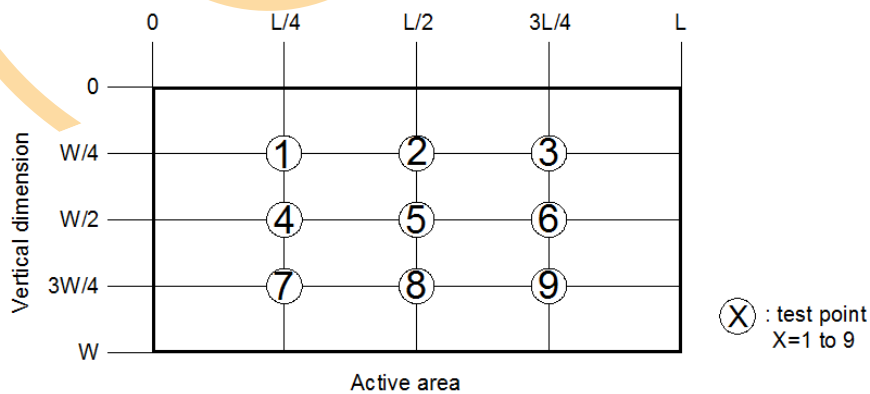


Note 4 : Measurement Set-Up :

The LCD module should be stabilized at a given temperature for 20 minutes to avoid abrupt temperature change during measuring. In order stabilize the luminance, the measurement should be executed after lighting Backlight for 20 minutes in a windless room.



Note 5 :



$$\left[ 1 - \frac{\text{MAX Luminance} - \text{Average Luminance}}{\text{Average Luminance}} \right] \times 100\% = \text{YU}$$

## 9. TOUCH PANEL SPECIFICATIONS

### 9.1 Type :

9.1.1 USB I/F PCAP

### 9.2 STRUCTURE :

9.2.1 Thickness : 2.4±0.2mm

9.2.1 Thickness : 2.4mm (Cover 1.1t / Sensor 0.7t / COF 0.2/ Type 0.4)

### 9.3 IC MODEL :

9.3.1 IC manufacture : ILITEK

9.3.2 IC part number : ILI2511

9.3.3 Interface : USB

### 9.4 ELECTRICAL CHARACTERISTICS :

9.4.1 Operating Voltage : +5V

### 9.5 MECHANICAL CHARACTERISTICS :

9.5.1 Surface hardness : 6H

### 9.6 OPTICAL CHARACTERISTICS :

9.6.1 Transparency :  $\geq 85\%$

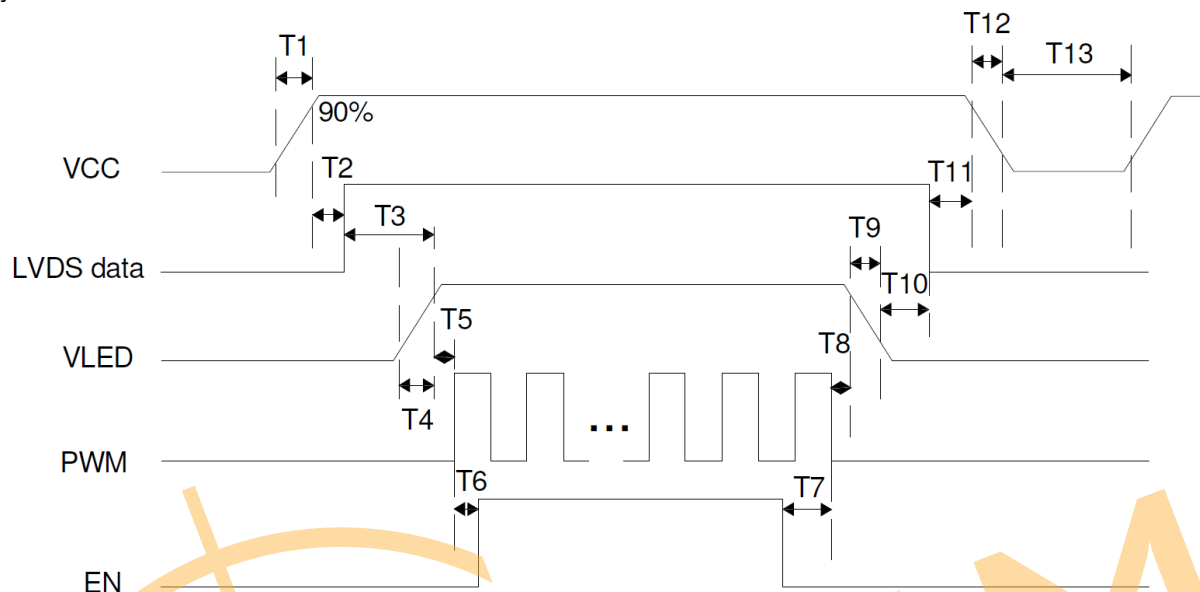
9.6.2 Haze:TBD

TEXIM-  
EUROPE

## 10. TIMING SPECIFICATIONS

### 10.1 LCM POWER ON/OFF SUPPLY VOLTAGE SEQUENCE

Power on/off sequence is as follows. Interface signals are also shown in the chart. Signals from any system shall be Hi-Z state or low level when VDD is off.



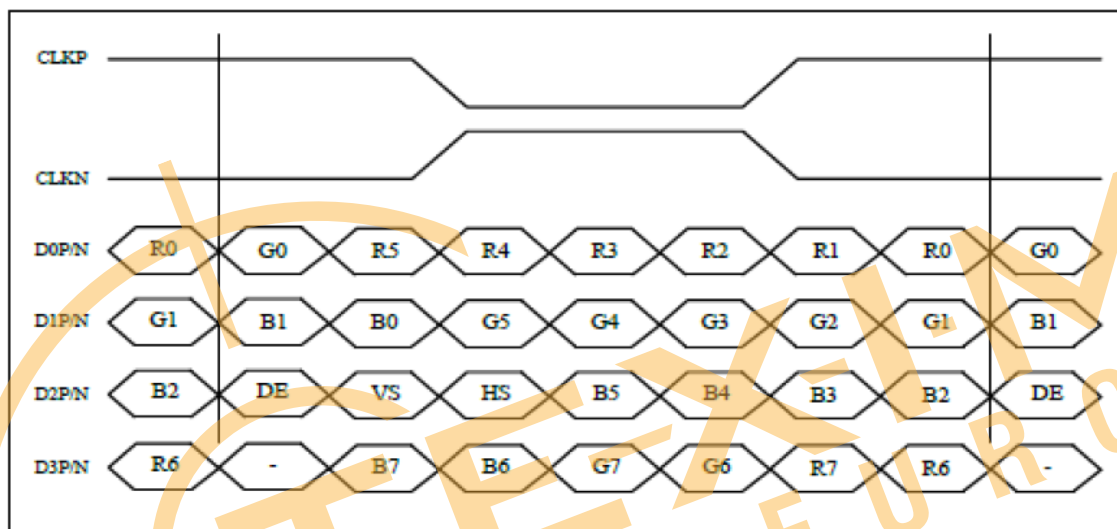
PARAMETER	SYMBOL	MIN	TYP.	MAX	UNIT
VIN Rise Time	T1	0.5	--	10	ms
VIN Good to Signal Valid	T2	30	--	90	ms
Signal Valid to Backlight On	T3	200	--	--	ms
Backlight Power On Time	T4	0.5	--	--	ms
Backlight VDD Good to System PWM	T5	10	--	--	ms
System PWM ON to Backlight Enable ON	T6	10	--	--	ms
Backlight Enable Off to System PWM Off	T7	0	--	--	ms
System PWM Off to B/L Power Disable	T8	10	--	--	ms
Backlight Power Off Time	T9	0.5	10	30	ms
Backlight Off to Signal Disable	T10	200	--	--	ms
Signal Disable to Power Down	T11	0	--	50	ms
VIN fall Time	T12	0.5	10	30	ms
Power Off	T13	500	--	--	ms



## 10.2 Interface Timing

ITEM	SYMBOL	MIN.	TYP.	MAX.	UNIT
LVDS Clock Frequency	Fclk	70	72.4	76.6	MHz
H Total Time	HT	1410	1440	1470	Clocks
H Active Time	HA	1280	1280	1280	Clocks
V Total Time	VT	828	838	868	Lines
V Active Time	VA	800	800	800	Lines
Frame Rate	FV	-	60	-	Hz

### Data Mapping



## 11. RELIABILITY TEST

ENVIRONMENTAL TEST				
NO.	ITEM	CONDITIONS	TIME PERIOD	REMARK
1	High Temperature Storage	Ta= 80°C	240Hours	Note 1,3
2	Low Temperature Storage	Ta= -30°C	240Hours	Note 1,3
3	High Temperature Humidity Storage	60°C,90%RH	240Hours	Note 1,3
4	High Temperature Operation	Ts= 70°C	240Hours	Note 2,3
5	Low Temperature Operation	Ta= -20°C	240Hours	Note 1,3
6	Temperature Cycle	-30°C~80°C	1H/cycle 50CYCLE	Note 2,4

In the standard condition, there shall be no practical problem that may affect the display function. After the reliability test, the product only guarantees operation, but don't guarantee all of the cosmetic specification.

Note 1 : Ta is the ambient temperature of samples.

Note 2 : Ts is the temperature of panel's surface.

Note 3 : Before cosmetic and function test, the product must have enough recovery time, at least 2 hours at room temperature.

Note 4 : Star with cold temperature and end with high temperature.

## 12. LCM INSPECTION STANDARD

Inspection specifications refer Document Number : QT3-QC-A-1004

## 13. PACKAGE INFORMATION

LCM Model	LCM Qty. in the box	Outer box Size (mm)	Weight(Kg)
CH101ILHLWN-CT1	TBD	TBD	TBD

## 14. PRECAUTIONS FOR USE

### 14.1 SAFETY

- (1) Do not swallow any liquid crystal, even if there is no proof that liquid crystal is poisonous.
- (2) If the LCD panel breaks, be careful not to get liquid crystal to touch your skin.
- (3) If skin is exposed to liquid crystal, wash the area thoroughly with alcohol or soap.

### 14.2 STORAGE CONDITIONS

- (1) Store the panel or module in a dark place where the temperature is  $23\pm 5^{\circ}\text{C}$  and the humidity is below  $50\pm 20\%\text{RH}$ .
- (2) Store in anti-static electricity container.
- (3) Store in clean environment, free from dust, active gas, and solvent.
- (4) Do not place the module near organics solvents or corrosive gases.
- (5) Do not crush, shake, or jolt the module.

### 14.3 HANDLING PRECAUTIONS

- (1) Avoid static electricity which can damage the CMOS LSI.
- (2) The polarizing plate of the display is very fragile. So, please handle it very carefully.
- (3) Do not give external shock.
- (4) Do not apply excessive force on the surface.
- (5) Do not wipe the polarizing plate with a dry cloth, as it may easily scratch the Surface of plate.
- (6) Do not use ketonic solvent & Aromatic solvent, use with a soft cloth soaked with a cleaning naphtha solvent.
- (7) Do not operate it above the absolute maximum rating.
- (8) Do not remove the panel or frame from the module.
- (9) When the module is assembled, it should be attached to the system firmly, Be careful not to twist and bend the module.
- (10) Wipe off water droplets or oil immediately . If you leave the droplets for a long time, staining and discoloration may occur.
- (11) If the liquid crystal material leaks from the panel, it should be kept away from the eyes or mouth.  
In case of contact with hands, legs or clothes, it must be washed away thoroughly with soap.

### 14.4 WARRANTY

- (1) Acceptance inspection period. The period is within one month after the arrival of contracted commodity at the buyer's factory site.
- (2) Applicable warrant period. The period is within 12 months since the date of shipping out under normal using and storage conditions.

## **Disclaimer**

ALL PRODUCTS, PRODUCT SPECIFICATIONS AND DATA ARE SUBJECT TO CHANGE WITHOUT NOTICE TO IMPROVE RELIABILITY, FUNCTION OR DESIGN OR OTHERWISE.

Texim Europe B.V. its affiliates, agents, and employees, and all persons acting on its or their behalf (collectively, "Texim"), disclaim any and all liability for any errors, inaccuracies or incompleteness contained in any datasheet or in any other disclosure relating to any product.

Texim makes no warranty, representation or guarantee regarding the suitability of the products for any particular purpose or the continuing production of any product.

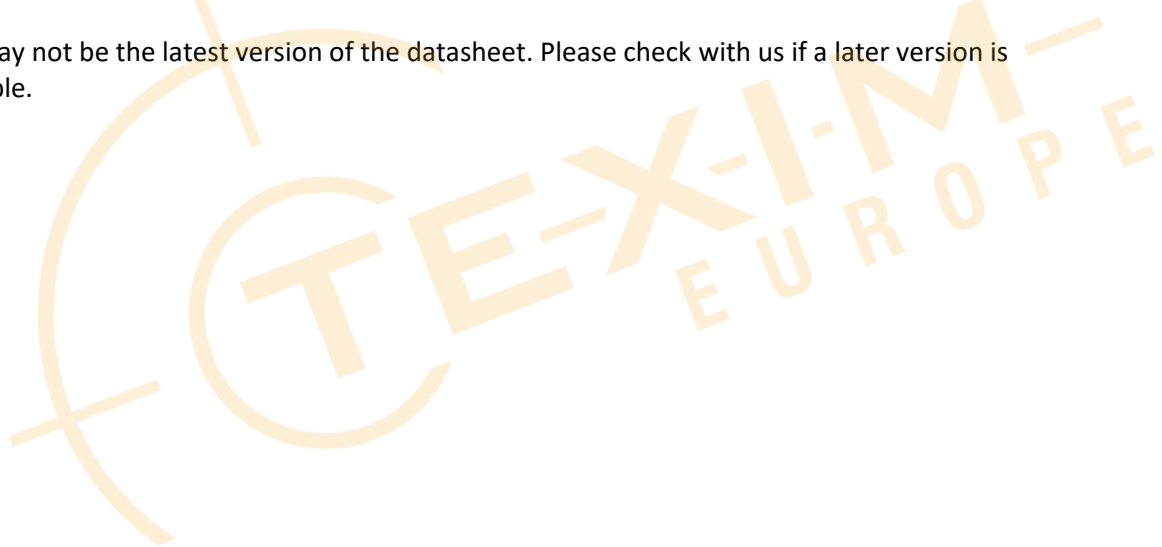
It is the customer's responsibility to validate that a particular product with the properties described in the product specification is suitable for use in a particular application.

Parameters provided in datasheets and / or specifications may vary in different applications and performance may vary over time.

All operating parameters, including typical parameters, must be validated for each customer application by the customer's technical experts.

Please contact us if you have any questions about the contents of the datasheet.

This may not be the latest version of the datasheet. Please check with us if a later version is available.





## Headquarters & Warehouse

Elektrostraat 17  
NL-7483 PG Haaksbergen  
The Netherlands

T: +31 (0)53 573 33 33  
E: info@texim-europe.com  
Homepage: www.texim-europe.com



### The Netherlands

Elektrostraat 17  
NL-7483 PG Haaksbergen

T: +31 (0)53 573 33 33  
E: nl@texim-europe.com



### Belgium

Zuiderlaan 14, box 10  
B-1731 Zellik

T: +32 (0)2 462 01 00  
E: belgium@texim-europe.com



### UK & Ireland

St Mary's House, Church Lane  
Carlton Le Moorland  
Lincoln LN5 9HS

T: +44 (0)1522 789 555  
E: uk@texim-europe.com



### Germany - North

Bahnhofstrasse 92  
D-25451 Quickborn

T: +49 (0)4106 627 07-0  
E: germany@texim-europe.com



### Germany - South

Martin-Kollar-Strasse 9  
D-81829 München

T: +49 (0)89 436 086-0  
E: muenchen@texim-europe.com



### Austria

Warwitzstrasse 9  
A-5020 Salzburg

T: +43 (0)662 216 026  
E: austria@texim-europe.com



### Nordic

Søndre Jagtvej 12  
DK-2970 Hørsholm

T: +45 88 20 26 30  
E: nordic@texim-europe.com



### Italy

Martin-Kollar-Strasse 9  
D-81829 München

T: +49 (0)89 436 086-0  
E: italy@texim-europe.com