



CAB452RF: IPEX MHF I LK PLUG + S/S TNC FEMALE STRAIGHT BULKHEAD JACK W/O-RING RATED TO IP67/68 + 1.37MM CABLE

SPECIFICATIONS:

1. I-PEX MHF I LK PLUG, GOLD PLATED, P/N: 20670-001R-37. LOCK: 3376-000.
2. ϕ 1.37MM COAXIAL CABLE, COLOR: BLACK.
3. TNC STRAIGHT BULKHEAD JACK W/O-RING, W/SUS303 STAINLESS STEEL BODY, RATED TO IP67/68, P/N: RFCT-TNC018-F78 (WITH SILICONE O-RING) OR RFCT-TNC018-F78-1 (WITH EPDM O-RING).

ENVIRONMENTAL:

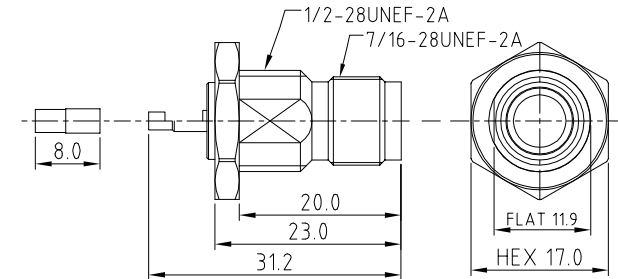
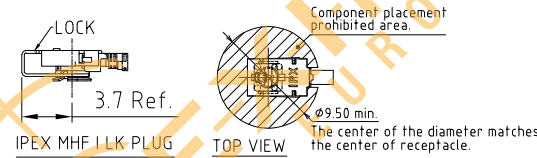
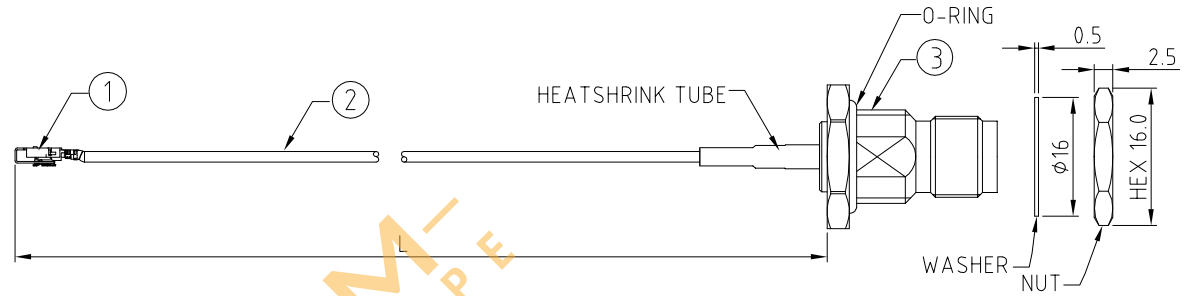
- A. BULKHEAD MOUNTED CONNECTOR (RFCT-TNC018-F78) RATED TO THE FOLLOWING SPECIFICATION:
- i. IP6X - DUST TIGHT - NO PARTICLE INGRESS.
 - ii. IPX7 WATERPROOF FOR 30 MINUTES UP TO 1 METER UNDERWATER.
 - iii. IPX8 WATERPROOF FOR 48 HOURS AT 1 METER UNDERWATER.

NOTES:

1. THE ORIENTATION OF CONNECTORS ON DRAWING IS FOR REFERENCE ONLY, IF THE ORDER IS LEFT BLANK THE CONNECTOR WILL NOT HAVE FIXED ORIENTATION.
2. FIXED ORIENTATION IS SUGGESTED FOR CABLE LENGTH 25MM TO 100MM. PLEASE SPECIFY THE FIXED ORIENTATIONS FROM THE ORDER CODE (F1, F2, ETC)
3. CONTACT GRADCONN IF THE ORIENTATION YOU REQUIRE IS NOT SHOWN.
4. WORKING FREQUENCY RANGE: DC-6GHz.
5. OPERATING TEMPERATURE: -40°C TO +85°C
6. IMPEDANCE: 50 OHM
7. IF THE CONNECTOR IS USED IN A CORROSIVE ENVIRONMENT, WE RECOMMEND THE CONNECTOR FACE IS PROTECTED WITH A STAINLESS STEEL DUST CAP.
8. PLEASE USE THE RECOMMENDED TORQUE FORCES FOR STAINLESS STEEL CONNECTORS. THIS IS PUBLISHED ON GRADCONN.COM RESOURCES PAGE.

USAGE PRECAUTIONS: CABLES USING 'MICRO' COAX ARE DELICATE:

- (i) HANDLE WITH CARE.
- (ii) DO NOT TWIST; APPLY EXCESSIVE FORCES OR SHARP BENDS TO THE CABLE. DO NOT FORCEFULLY DEFORM WIRES.
- (iii) CONSULT CONNECTOR MANUFACTURER'S DATASHEETS FOR DETAILED NOTES ON HANDLING INSTRUCTIONS.



HOW TO ORDER
CAB452RF - X X X X - X X - X - 1 - X

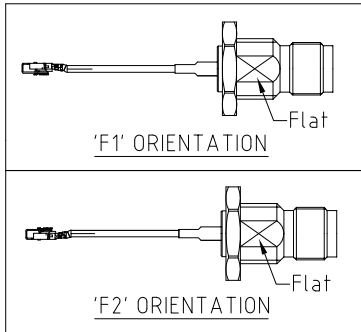
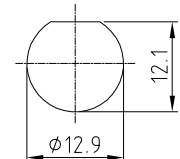
"L" LENGTH IN MM:
eg: 100MM = 0100
(MIN. 0025-MAX.0400)
STANDARD = 0100, 0150, 0200
Tolerance: 50mm: \pm 2mm.
51-200mm: \pm 5mm.
201-400mm: \pm 7mm.

O-RING MATERIAL OPTIONS:
S = SILICONE, BLACK
E = EPDM, BLACK (STANDARD)

WASHER AND NUT OPTIONS:
BLANK = SEPARATELY PACKED (STANDARD)
A = ALL ASSEMBLED WITH CONNECTOR

ORIENTATION OPTIONS:
BLANK = DOES NOT HAVE A FIXED ORIENTATION
F1 = MHF CONNECTION DOWN (L=25-200MM)
F2 = MHF CONNECTION UP (L=25-200MM)
(SEE NOTES 1, 2, 3 AND DIAGRAMS FOR MORE INFORMATION)

RECOMMENDED TNC MOUNTING HOLE
(TOLERANCE: \pm 0.1)



REV. DATE & DRN
10 15/01/21 - NYW RELEASE
11 22/03/21 - NYW
12 27/04/21 - NYW
13 01/05/21 - NYW
14 31/07/22 - NYW
15 22/07/22 - NYW
16 02/07/23 - NYW
17 23/07/23 - NYW
18 07/08/23 - NYW
19 07/08/23 - NYW
20 07/08/23 - NYW
21 07/08/23 - NYW
22 07/08/23 - NYW
23 07/08/23 - NYW
24 07/08/23 - NYW
25 07/08/23 - NYW
26 07/08/23 - NYW
27 07/08/23 - NYW
28 07/08/23 - NYW
29 07/08/23 - NYW
30 07/08/23 - NYW
31 07/08/23 - NYW
32 07/08/23 - NYW
33 07/08/23 - NYW
34 07/08/23 - NYW
35 07/08/23 - NYW
36 07/08/23 - NYW
37 07/08/23 - NYW
38 07/08/23 - NYW
39 07/08/23 - NYW
40 07/08/23 - NYW
41 07/08/23 - NYW
42 07/08/23 - NYW
43 07/08/23 - NYW
44 07/08/23 - NYW
45 07/08/23 - NYW
46 07/08/23 - NYW
47 07/08/23 - NYW
48 07/08/23 - NYW
49 07/08/23 - NYW
50 07/08/23 - NYW
51 07/08/23 - NYW
52 07/08/23 - NYW
53 07/08/23 - NYW
54 07/08/23 - NYW
55 07/08/23 - NYW
56 07/08/23 - NYW
57 07/08/23 - NYW
58 07/08/23 - NYW
59 07/08/23 - NYW
60 07/08/23 - NYW
61 07/08/23 - NYW
62 07/08/23 - NYW
63 07/08/23 - NYW
64 07/08/23 - NYW
65 07/08/23 - NYW
66 07/08/23 - NYW
67 07/08/23 - NYW
68 07/08/23 - NYW
69 07/08/23 - NYW
70 07/08/23 - NYW
71 07/08/23 - NYW
72 07/08/23 - NYW
73 07/08/23 - NYW
74 07/08/23 - NYW
75 07/08/23 - NYW
76 07/08/23 - NYW
77 07/08/23 - NYW
78 07/08/23 - NYW
79 07/08/23 - NYW
80 07/08/23 - NYW
81 07/08/23 - NYW
82 07/08/23 - NYW
83 07/08/23 - NYW
84 07/08/23 - NYW
85 07/08/23 - NYW
86 07/08/23 - NYW
87 07/08/23 - NYW
88 07/08/23 - NYW
89 07/08/23 - NYW
90 07/08/23 - NYW
91 07/08/23 - NYW
92 07/08/23 - NYW
93 07/08/23 - NYW
94 07/08/23 - NYW
95 07/08/23 - NYW
96 07/08/23 - NYW
97 07/08/23 - NYW
98 07/08/23 - NYW
99 07/08/23 - NYW
100 07/08/23 - NYW



Scale: NTS	THIRD ANGLE	Unstated: .X N/A, .XX N/A, .XXX N/A, ANGLES N/A	Tolerances: N/A, N/A, N/A
Drawn: NYW		Title: CABLE ASSEMBLY	
App'd: XXX			
Date: 17 MAY '23	Revision: 1.8	Unit: mm	

IP67/68 Rated Cables

www.gradconn.com

© THIS DRAWING IS CONFIDENTIAL AND MUST NOT BE COPIED OR DISCLOSED WITHOUT WRITTEN CONSENT

Drawing Number: CAB452RF
Sheet 1 of 1
Drawing © E and O E

Disclaimer

ALL PRODUCTS, PRODUCT SPECIFICATIONS AND DATA ARE SUBJECT TO CHANGE WITHOUT NOTICE TO IMPROVE RELIABILITY, FUNCTION OR DESIGN OR OTHERWISE.

Texim Europe B.V. its affiliates, agents, and employees, and all persons acting on its or their behalf (collectively, "Texim"), disclaim any and all liability for any errors, inaccuracies or incompleteness contained in any datasheet or in any other disclosure relating to any product.

Texim makes no warranty, representation or guarantee regarding the suitability of the products for any particular purpose or the continuing production of any product.

It is the customer's responsibility to validate that a particular product with the properties described in the product specification is suitable for use in a particular application.

Parameters provided in datasheets and / or specifications may vary in different applications and performance may vary over time.

All operating parameters, including typical parameters, must be validated for each customer application by the customer's technical experts.

Please contact us if you have any questions about the contents of the datasheet.

This may not be the latest version of the datasheet. Please check with us if a later version is available.



Headquarters & Warehouse

Elektrostraat 17
 NL-7483 PG Haaksbergen
 The Netherlands

T: +31 (0)53 573 33 33
 E: info@texim-europe.com
 Homepage: www.texim-europe.com



The Netherlands

Elektrostraat 17
 NL-7483 PG Haaksbergen

T: +31 (0)53 573 33 33
 E: nl@texim-europe.com



Belgium

Zuiderlaan 14, box 10
 B-1731 Zellik

T: +32 (0)2 462 01 00
 E: belgium@texim-europe.com



UK & Ireland

St Mary's House, Church Lane
 Carlton Le Moorland
 Lincoln LN5 9HS

T: +44 (0)1522 789 555
 E: uk@texim-europe.com



Germany - North

Bahnhofstrasse 92
 D-25451 Quickborn

T: +49 (0)4106 627 07-0
 E: germany@texim-europe.com



Germany - South

Martin-Kollar-Strasse 9
 D-81829 München

T: +49 (0)89 436 086-0
 E: muenchen@texim-europe.com



Austria

Warwitzstrasse 9
 A-5020 Salzburg

T: +43 (0)662 216 026
 E: austria@texim-europe.com



Nordic

Søndre Jagtvej 12
 DK-2970 Hørsholm

T: +45 88 20 26 30
 E: nordic@texim-europe.com



Italy

Martin-Kollar-Strasse 9
 D-81829 München

T: +49 (0)89 436 086-0
 E: italy@texim-europe.com