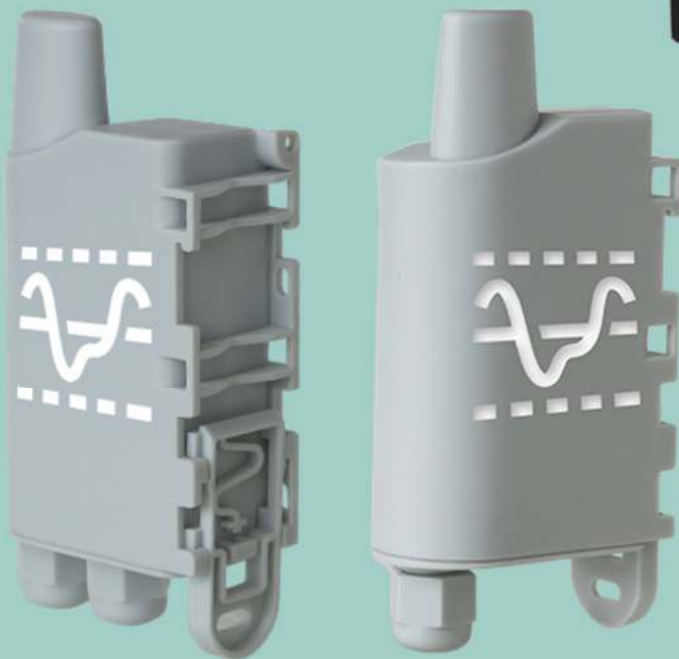


## New features for the ANALOG LoRaWAN sensor



The ANALOG LoRaWAN has been given a facelift and now includes the following functions:

- Minimum scan period of 30 seconds with a sampling period of 30 seconds
- Data logging (up to 24 values per frame)
- Redundancy
- Configurable lifetime frame
- Data time-stamping
- Customisable join phase
- Network test at start-up

Reference:

ARF8190BAE / ARF8190BAE-B01 / ARF8190BAE-B02

ARF8200AAD