

# RoHS

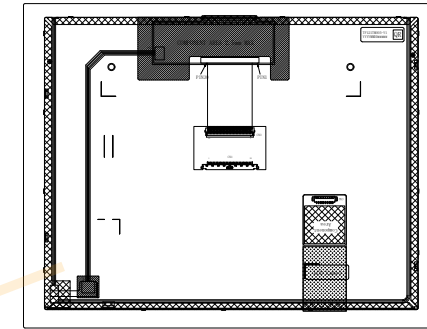
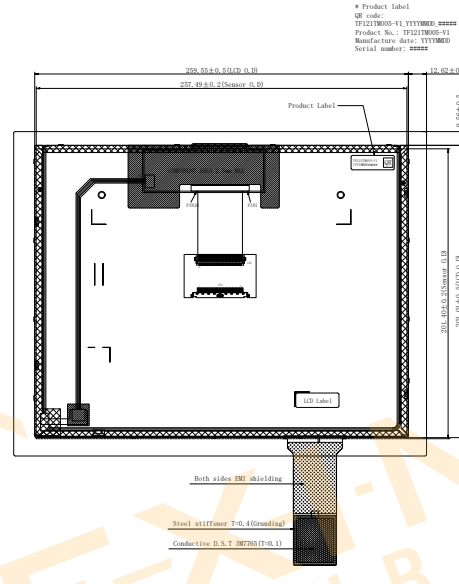
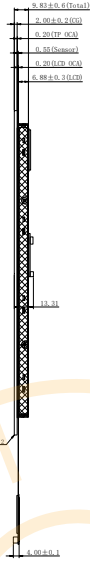
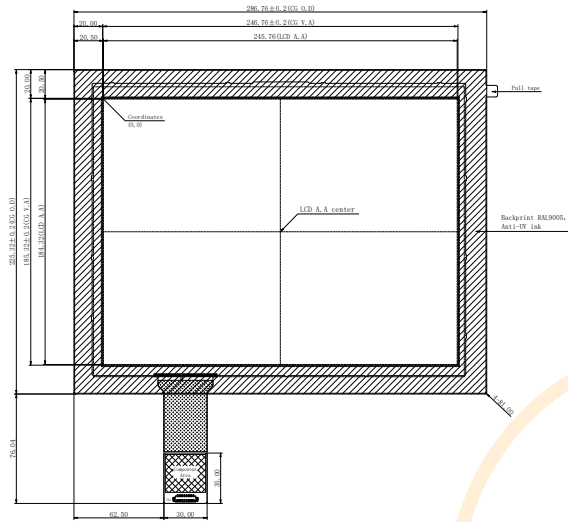
Distributed by [www.texim-europe.com](http://www.texim-europe.com)



Front view

Side view

Back view



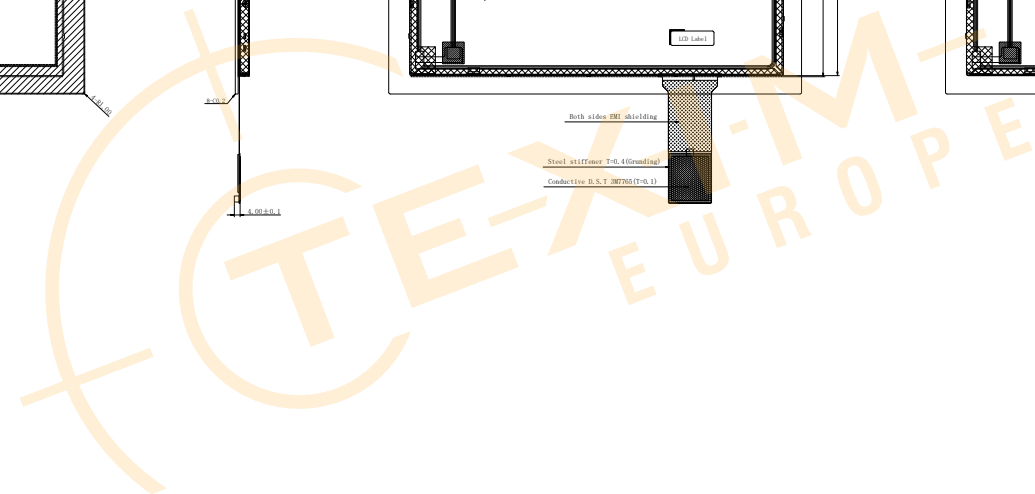
CN1:

No.	Symbol
1	LED
2	VLED
3	VLED
4	LED
5	LED
6	LED
7	NC
8	NC
9	VED
10	END
11	END
12	END
13	END
14	END
15	END
16	END
17	END
18	END
19	END
20	END
21	END
22	END
23	END
24	END
25	END
26	END
27	END
28	NC
29	NC
30	NC

CN2:

No.	Symbol
1	NC
2	NC
3	NC
4	NC
5	NC
6	NC
7	NC
8	NC
9	NC
10	NC

- General Specification:
- Structure:G+G+LCD, Optical bonding  
CG: soda-lime glass, Chemical strengthened
  - 12.1"IPS TFT-LCD, Transmissive, Normally Black  
Resolution: 1024\*(RGB)\*768
  - Surface Hardness: ≥6H
  - LCD interface: LVDS
  - CTP IC: EXC81W32, TX23\*RX30  
CTP interface: USB or I2C
  - LCD Power supply(VDD): 3.3V  
Backlight Power supply(VLED): 12V  
CTP Power supply: VBUS-5V(USB), VCC-3.3V(I2C)  
I2C communication voltage: 3.3V
  - Operating Temp.: -20 to 70°C  
Storage Temp.: -30 to 80°C
  - Luminance: 650cd/m2(Min.), 850cd/m2(Typ.)
  - General Tolerance: ±0.3



				DRAWN	Alex	CTP+LCD	Drawing NO:	
				CHECKED			Product NO:	TF121TM005-V1
				APPROVED				
				Customer No:				
1	△	Preliminary drawing	20240120	3rd Angle				
VER.	SYMBOL	AMENDMENT	DATE	SHEET 1 OF 1				

## **Disclaimer**

ALL PRODUCTS, PRODUCT SPECIFICATIONS AND DATA ARE SUBJECT TO CHANGE WITHOUT NOTICE TO IMPROVE RELIABILITY, FUNCTION OR DESIGN OR OTHERWISE.

Texim Europe B.V. its affiliates, agents, and employees, and all persons acting on its or their behalf (collectively, “Texim”), disclaim any and all liability for any errors, inaccuracies or incompleteness contained in any datasheet or in any other disclosure relating to any product.

Texim makes no warranty, representation or guarantee regarding the suitability of the products for any particular purpose or the continuing production of any product.

It is the customer’s responsibility to validate that a particular product with the properties described in the product specification is suitable for use in a particular application.

Parameters provided in datasheets and / or specifications may vary in different applications and performance may vary over time.

All operating parameters, including typical parameters, must be validated for each customer application by the customer’s technical experts.

Please contact us if you have any questions about the contents of the datasheet.

This may not be the latest version of the datasheet. Please check with us if a later version is available.



## Headquarters & Warehouse

Elektrostraat 17  
NL-7483 PG Haaksbergen  
The Netherlands



T: +31 (0)53 573 33 33  
E: info@texim-europe.com  
Homepage: www.texim-europe.com



## The Netherlands

Elektrostraat 17  
NL-7483 PG Haaksbergen

T: +31 (0)53 573 33 33  
E: nl@texim-europe.com



## Belgium

Zuiderlaan 14, box 10  
B-1731 Zellik

T: +32 (0)2 462 01 00  
E: belgium@texim-europe.com



## UK & Ireland

St Mary's House, Church Lane  
Carlton Le Moorland  
Lincoln LN5 9HS

T: +44 (0)1522 789 555  
E: uk@texim-europe.com



## Germany - North

Bahnhofstrasse 92  
D-25451 Quickborn

T: +49 (0)4106 627 07-0  
E: germany@texim-europe.com



## Germany - South

Martin-Kollar-Strasse 9  
D-81829 München

T: +49 (0)89 436 086-0  
E: muenchen@texim-europe.com



## Austria

Warwitzstrasse 9  
A-5020 Salzburg

T: +43 (0)662 216 026  
E: austria@texim-europe.com



## Nordic

Søndre Jagtvej 12  
DK-2970 Hørsholm

T: +45 88 20 26 30  
E: nordic@texim-europe.com



## Italy

Martin-Kollar-Strasse 9  
D-81829 München

T: +49 (0)89 436 086-0  
E: italy@texim-europe.com