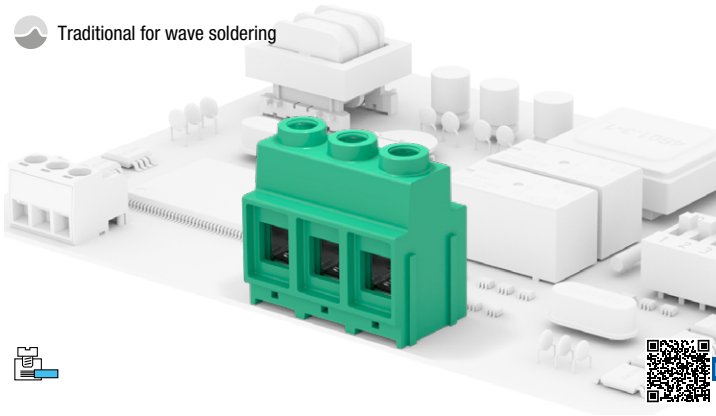


Traditional for wave soldering



Last release

Your drawings and notes

Distributed by:



General data

Dimensional class:	high
Standard colour:	green
Pitches:	imperial 10.16 mm (.400 in)
Screw dimension:	M4
Recommended/highest tightening torque:	1.2 Nm (10.62 lbf-in)
PCB thickness:	max. 3.2 mm (.126 in)
PCB hole diameter:	min. 1.5 mm (.059 in)
Stripping length:	10 ÷ 12 mm (.39 ÷ .47 in)
Operating temperature range	-40 °C ÷ +105 °C (-40 °F ÷ +221 °F)
Contact resistance:	<15 mΩ
Insulating material group:	I (CTI ≥ 600V)
Self-extinguishing class UL94:	V0
Insulation resistance:	>10 ⁹ Ω (500V DC)

Certifications

UL (n. E167473)

MPM_S_6
300 V - 57 A - 16÷6 AWG - cat. B/C
600 V - 5 A - 16÷6 AWG - cat. D

MPM_S_6-000E
300 V - 42 A - 16÷6 AWG - cat. B/C
600 V - 5 A - 16÷6 AWG - cat. D

MPM_Z_6
600 V - 57 A - 16÷6 AWG - cat. B/C/D

MPM_Z_6-000E
600 V - 42 A - 16÷6 AWG - cat. B/C/D

MPM_D_6
300 V - 65 A - 16÷6 AWG - cat. B
150 V - 65 A - 16÷6 AWG - cat. C
300 V - 10 A - 16÷6 AWG - cat. D

MPM_D_6-000E
300 V - 42 A - 16÷6 AWG - cat. B
150 V - 42 A - 16÷6 AWG - cat. C
300 V - 10 A - 16÷6 AWG - cat. D

Data according to

IEC EN 60947-7-4

MPM_S_6
1000 V - 76 A - 0.5÷16 mm²

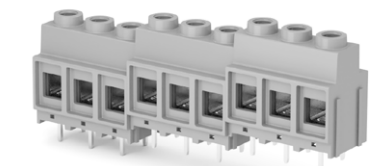
MPM_S_6-000E
1000 V - 66 A - 0.5÷16 mm²

MPM_Z_6
1000 V - 72 A - 0.5÷16 mm²

MPM_Z_6-000E
1000 V - 62 A - 0.5÷16 mm²

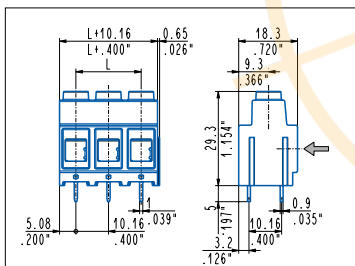
MPM_D_6
320 V - 76 A - 0.5÷16 mm²

MPM_D_6-000E
320 V - 76 A - 0.5÷16 mm²



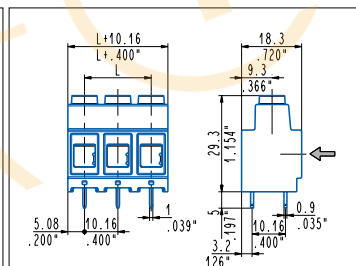
Application values for end-use equipment have to be in accordance to norms and applicable to it. The certifications of some product's versions could be pending, for more detailed and updated data please refer to our web site www.sauro.net or your representative Sales Manager.

A higher number of poles is obtained by combining together **modular** parts.



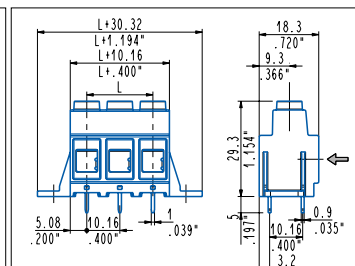
0°, modular
MPM_SM6 - 2÷6 poles, 10.16 mm / .400" pitch
MPM_SM6-000E 2÷6 poles 10.16 mm .400" pitch

-000E = Low current version



0°, side stackable
MPM_SA6 - 2÷6 poles, 10.16 mm / .400" pitch
MPM_SA6-000E 2÷6 poles 10.16 mm .400" pitch

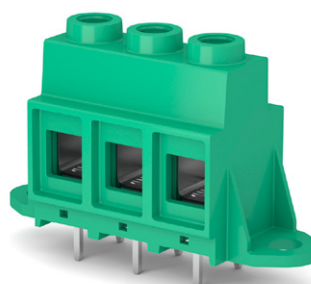
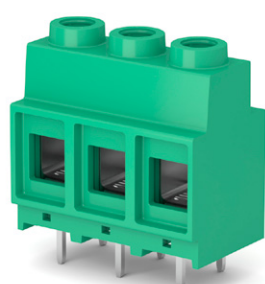
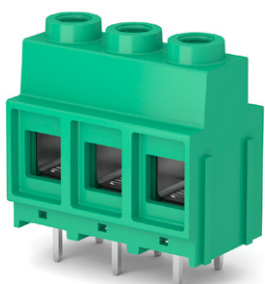
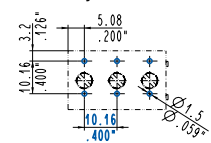
-000E = Low current version

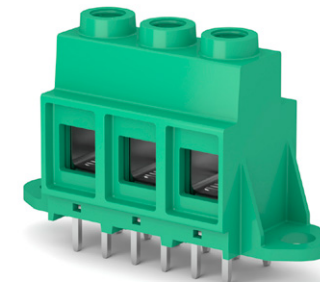
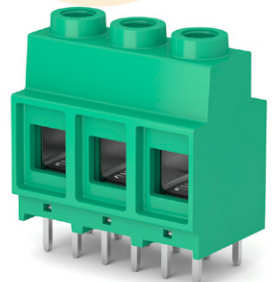
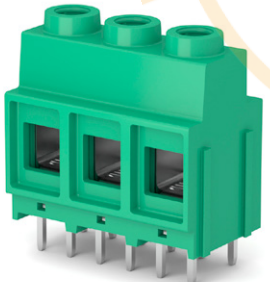
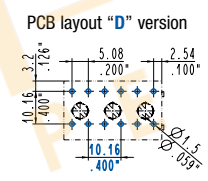
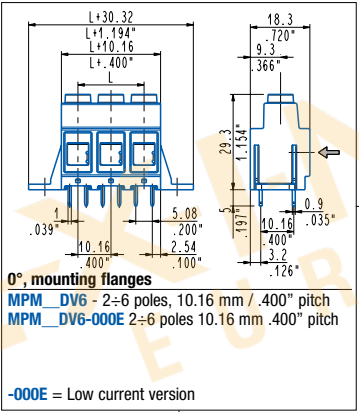
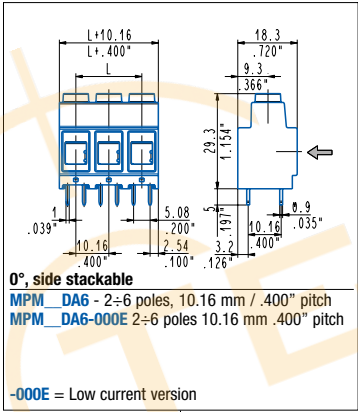
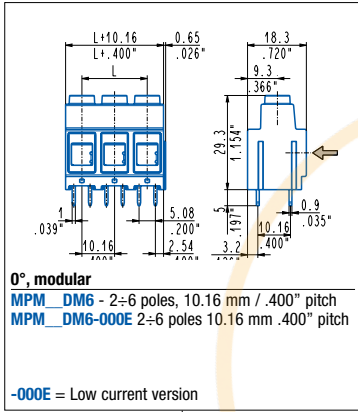
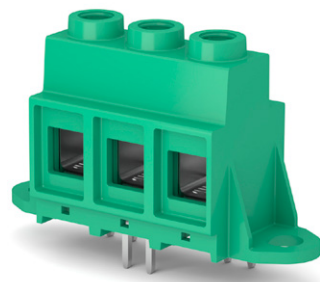
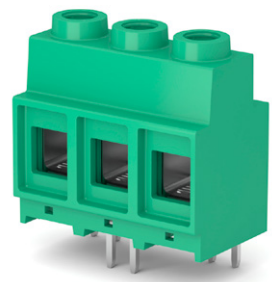
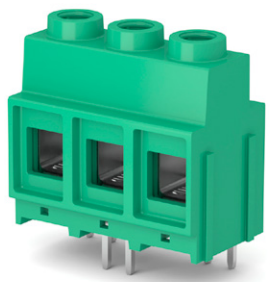
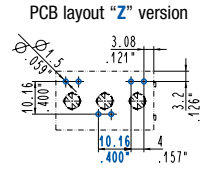
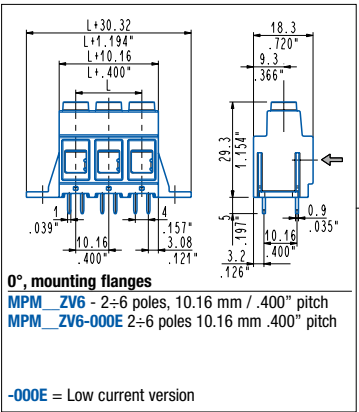
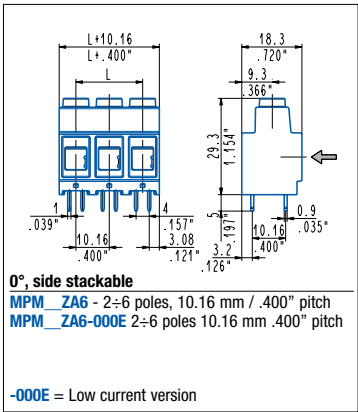
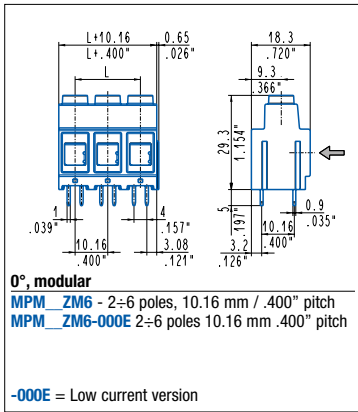


0°, mounting flanges
MPM_SV6 - 2÷6 poles, 10.16 mm / .400" pitch
MPM_SV6-000E 2÷6 poles 10.16 mm .400" pitch

-000E = Low current version

PCB layout "S" version





Disclaimer

ALL PRODUCTS, PRODUCT SPECIFICATIONS AND DATA ARE SUBJECT TO CHANGE WITHOUT NOTICE TO IMPROVE RELIABILITY, FUNCTION OR DESIGN OR OTHERWISE.

Texim Europe B.V. its affiliates, agents, and employees, and all persons acting on its or their behalf (collectively, "Texim"), disclaim any and all liability for any errors, inaccuracies or incompleteness contained in any datasheet or in any other disclosure relating to any product.

Texim makes no warranty, representation or guarantee regarding the suitability of the products for any particular purpose or the continuing production of any product.

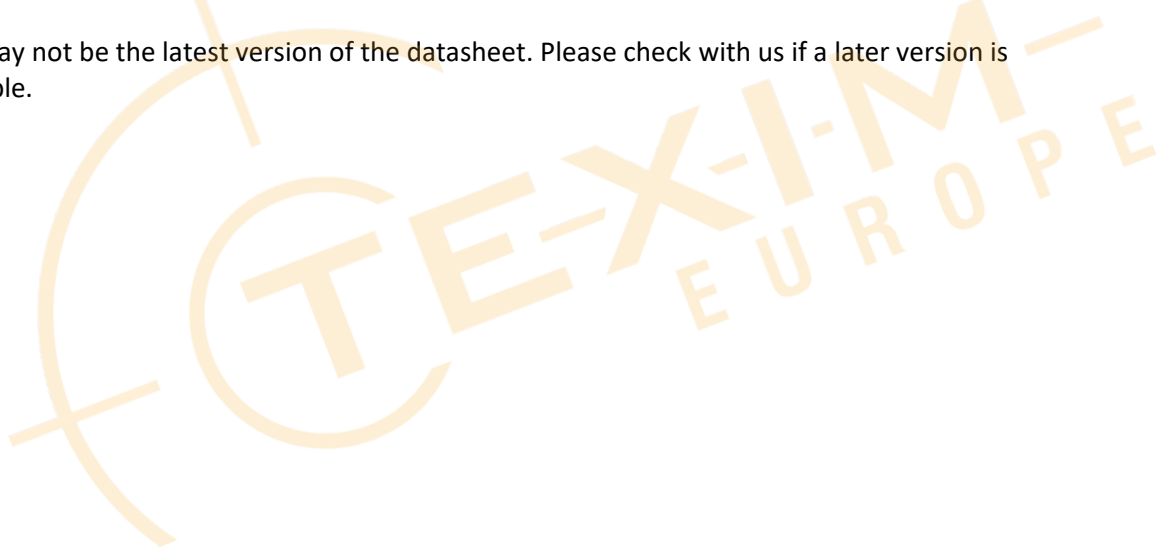
It is the customer's responsibility to validate that a particular product with the properties described in the product specification is suitable for use in a particular application.

Parameters provided in datasheets and / or specifications may vary in different applications and performance may vary over time.

All operating parameters, including typical parameters, must be validated for each customer application by the customer's technical experts.

Please contact us if you have any questions about the contents of the datasheet.

This may not be the latest version of the datasheet. Please check with us if a later version is available.





Headquarters & Warehouse

Elektrostraat 17
 NL-7483 PG Haaksbergen
 The Netherlands

T: +31 (0)53 573 33 33
 E: info@texim-europe.com
 Homepage: www.texim-europe.com



The Netherlands

Elektrostraat 17
 NL-7483 PG Haaksbergen

T: +31 (0)53 573 33 33
 E: nl@texim-europe.com



Belgium

Zuiderlaan 14, box 10
 B-1731 Zellik

T: +32 (0)2 462 01 00
 E: belgium@texim-europe.com



UK & Ireland

St Mary's House, Church Lane
 Carlton Le Moorland
 Lincoln LN5 9HS

T: +44 (0)1522 789 555
 E: uk@texim-europe.com



Germany - North

Bahnhofstrasse 92
 D-25451 Quickborn

T: +49 (0)4106 627 07-0
 E: germany@texim-europe.com



Germany - South

Martin-Kollar-Strasse 9
 D-81829 München

T: +49 (0)89 436 086-0
 E: muenchen@texim-europe.com



Austria

Warwitzstrasse 9
 A-5020 Salzburg

T: +43 (0)662 216 026
 E: austria@texim-europe.com



Nordic

Stockholmsgade 45
 2100 Copenhagen

T: +45 88 20 26 30
 E: nordic@texim-europe.com



Italy

Martin-Kollar-Strasse 9
 D-81829 München

T: +49 (0)89 436 086-0
 E: italy@texim-europe.com