

CAB606RF: SMA SEALED PLUG TO SMA SEALED JACK WITH O-RING, BOTH BRASS, IP68/69K, ALSR-100 CABLE, 6GHz

SPECIFICATIONS :

1. BRASS SMA SEALED PLUG, RATED TO IP68/69K, P/N: RFCT-SMA111-B-M-ALS-S (W/SILICONE GASKET)
2. COAXIAL CABLE, ALSR-100*, COLOR: BLACK. (SPECIFICATION EQUIVALENT TO LMR-100®)
3. BRASS SMA SEALED JACK WITH O-RING RATED TO IP68/69K, P/N: RFCT-SMA112-B-F-ALS-S (W/ SILICONE O-RING).
4. ALSO APPLICABLE FOR BULKHEAD-MOUNT (WASHER&NUT PROVIDED)

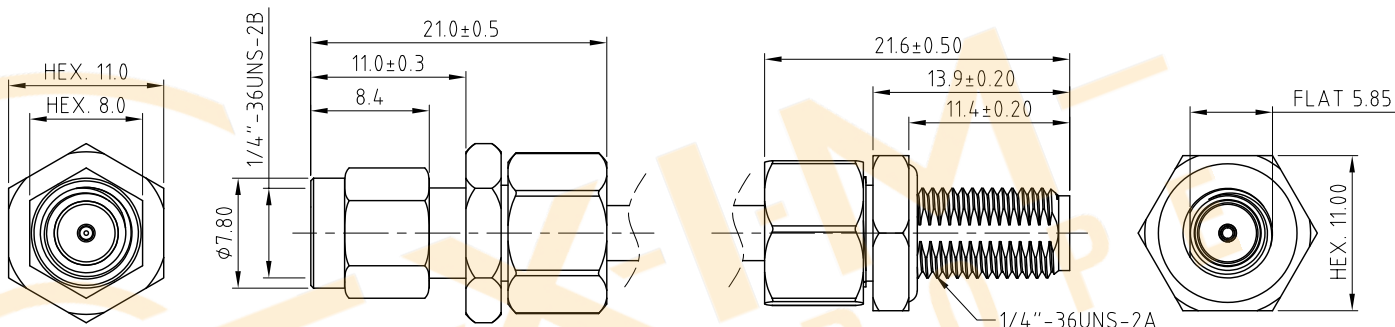
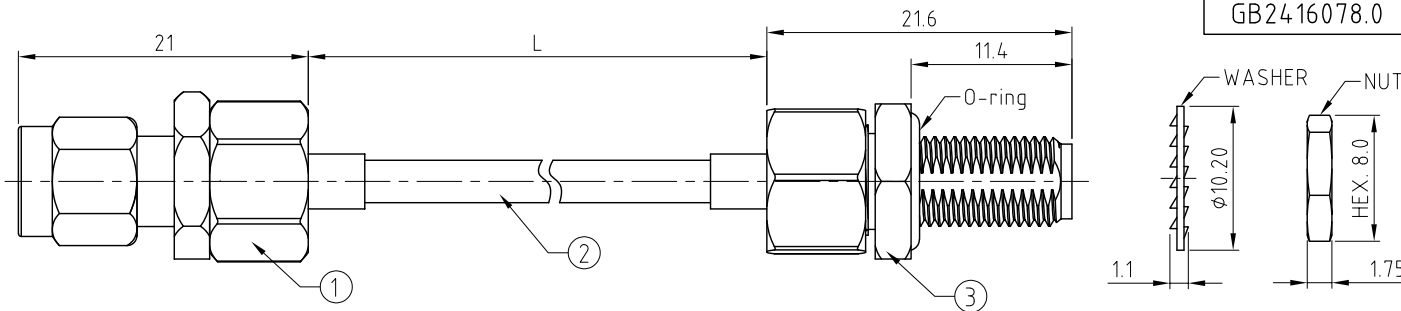
Patent Pending
GB2416077.2
GB2416078.0

ENVIRONMENTAL:

- A. SMA SEALED PLUG AND SMA SEALED JACK TESTED TO THE FOLLOWING SPECIFICATION:
- i. IP6X - DUST TIGHT - NO PARTICLE INGRESS.
 - ii. IPX8 WATERPROOF FOR 48 HOURS AT 1 METER UNDERWATER.
 - iii. IPX9K WATER SPRAY, 14-16L PER MINUTE, AT 8,000 ~ 10,000 KPA, AT 100-150MM DISTANCE FOR 30 SECONDS.

NOTES:

1. WORKING FREQUENCY RANGE: DC-6GHz.
2. OPERATING TEMPERATURE: -40°C TO +85°C.
3. IMPEDANCE: 50 OHM.



SMA PLUG DETAIL DRAWING

SMA JACK DETAIL DRAWING

HOW TO ORDER
CAB606RF - X X X X - X - 1

"L" LENGTH IN MM:

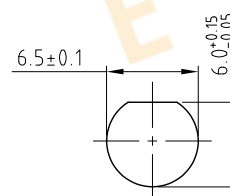
- eg: 500MM = 0500
MIN. 0050, MAX. 5000,
STANDARD = 0152(6-inch),
0304(12-inch), 0609(24-inch),
0914(36-inch)
Tolerance: 50mm: ±2mm.
51-200mm: ±5mm.
201-500mm: ±7mm.
501-999mm: ±10mm.
≥1000mm: ± (L x 0.02)mm.

CABLE SIZE:

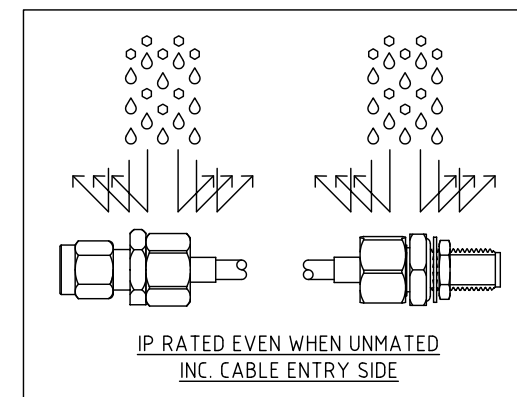
1 = ALSR-100 CABLE, COLOR: BLACK

WASHER AND NUT OPTIONS:

- BLANK = SEPARATELY PACKED (STANDARD)
A = ALL ASSEMBLED WITH CONNECTOR



RECOMMENDED SMA JACK MOUNTING HOLE
APPLICABLE PANEL THICKNESS:
MIN. 0.7MM ~ MAX. 3.2MM



Distributed by: **Texim Europe**

www.texim-europe.com

REV. DATE & DRN	10. 28/03/24 - CC RELEASE
	11. 11/06/24 - CC
	Add note 'Patent Pending'
	12. 26/08/24 - CC Sp. 100
	Change frequency to 6GHz
	Change max. cable length to 5m
	Change operating temperature to -40°C ~ +85°C
	13. 11/09/24 - CC
	Add GCT logo.
	14. 17/12/24 - CC
	Add Patent numbers.
	15. 17/01/25 - CC
	Remove note 'bulkhead' form SMA Jack description.

Distributed by:

www.texim-europe.com

Scale: NTS	THIRD ANGLE	Unstated Tolerances:
Drawn: CC		X ±0.2
App'd: XXX	Title CABLE ASSEMBLY	XX ±0.1
Date: 17 JAN. '25	Revision: 1.5	XXX ANGLES ±1°
	Unit: mm	

IP Rated RF Products	www.gct.co	www.gradconn.com
© THIS DRAWING IS CONFIDENTIAL AND MUST NOT BE COPIED OR DISCLOSED WITHOUT WRITTEN CONSENT		

Drawing Number:	CAB606RF
Sheet 1 of 1	
Drawing ©	E and O E

Disclaimer

ALL PRODUCTS, PRODUCT SPECIFICATIONS AND DATA ARE SUBJECT TO CHANGE WITHOUT NOTICE TO IMPROVE RELIABILITY, FUNCTION OR DESIGN OR OTHERWISE.

Texim Europe B.V. its affiliates, agents, and employees, and all persons acting on its or their behalf (collectively, “Texim”), disclaim any and all liability for any errors, inaccuracies or incompleteness contained in any datasheet or in any other disclosure relating to any product.

Texim makes no warranty, representation or guarantee regarding the suitability of the products for any particular purpose or the continuing production of any product.

It is the customer’s responsibility to validate that a particular product with the properties described in the product specification is suitable for use in a particular application.

Parameters provided in datasheets and / or specifications may vary in different applications and performance may vary over time.

All operating parameters, including typical parameters, must be validated for each customer application by the customer’s technical experts.

Please contact us if you have any questions about the contents of the datasheet.

This may not be the latest version of the datasheet. Please check with us if a later version is available.

Texim Europe - contact details



Headquarters & Warehouse

Elektrostraat 17
NL-7483 PG Haaksbergen
The Netherlands

T: +31 (0)53 573 33 33
E: info@texim-europe.com
Homepage: www.texim-europe.com



The Netherlands

Elektrostraat 17
NL-7483 PG Haaksbergen

T: +31 (0)53 573 33 33
E: nl@texim-europe.com



Belgium

Zuiderlaan 14, box 10
B-1731 Zellik

T: +32 (0)2 462 01 00
E: belgium@texim-europe.com



UK & Ireland

St Mary's House, Church Lane
Carlton Le Moorland
Lincoln LN5 9HS

T: +44 (0)1522 789 555
E: uk@texim-europe.com



Germany - North

Bahnhofstrasse 92
D-25451 Quickborn

T: +49 (0)4106 627 07-0
E: germany@texim-europe.com



Germany - South

Martin-Kollar-Strasse 9
D-81829 München

T: +49 (0)89 436 086-0
E: muenchen@texim-europe.com



Austria

Warwitzstrasse 9
A-5020 Salzburg

T: +43 (0)662 216 026
E: austria@texim-europe.com



Nordic

Stockholmsgade 45
2100 Copenhagen

T: +45 88 20 26 30
E: nordic@texim-europe.com



Italy

Martin-Kollar-Strasse 9
D-81829 München

T: +49 (0)89 436 086-0
E: italy@texim-europe.com