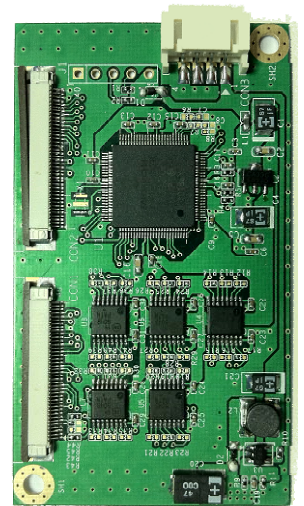


## PenMount 1300 USB / I<sup>2</sup>C Interface Control Board

PenMount 1300 control board is one of the cutting-edge innovations from PenMount. A collectively integrated feature with USB / I<sup>2</sup>C interface supporting 8" to 10.9" projected capacitive touch screens; complemented by the superbly developed PenMount drivers which can be used directly in Windows 7.

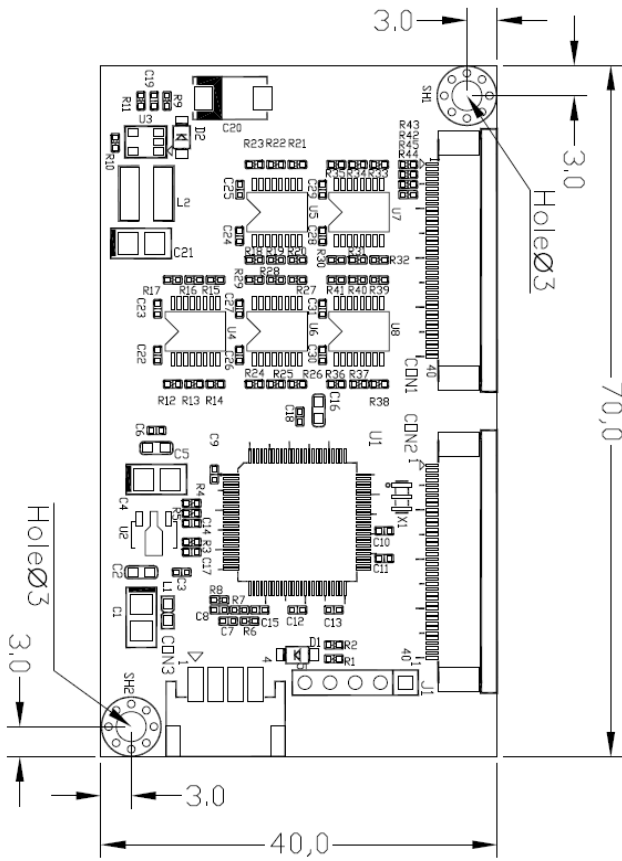
PenMount 1300 Control Board uses P2-04 Series controller, which is a capacitive sensing IC designed for AMT Projected Capacitive Input (PCI) touch panel and other projected capacitive touch panel. It is designed for PCI touch screen size up to 10.9". PenMount 1300 Control Board has the programmable filter, gain amplifier; with the functions of single, dual touch; and the gestures of one and two fingers. There are four connectors on this board: two 40 Pins ZIF connectors for PCI touch screen FPC tail, one USB connector for 4-pin USB cable (optional).



### Specifications

<b>Touch Screen:</b>	Projected capacitive type, size is 8" to 10.9"
<b>Host interface:</b>	USB : Full-speed, 12Mbps I <sup>2</sup> C : Slave , support 400 kHz specifications
<b>Touch Screen Controller:</b>	PenMount P2-04 series
<b>Size:</b>	40X70 mm , two 3φscrew holes
<b>ADC resolution:</b>	10 bits
<b>Operating Voltage:</b>	+5V DC for USB & I <sup>2</sup> C
<b>Storage Temperature Range:</b>	-40°C ~ +85°C
<b>Operating Temperature:</b>	-10°C ~ +70°C
<b>Power Consumption:</b>	Typical 25mA
<b>Max. touch line:</b>	23 sensing lines 30 driving lines
<b>Sample rate:</b>	> 100 sps (sample per second)

## Mechanical size



Unit : mm

## Connector Definition

CON1 40Pin ZIF · PH 0.5mm							
Pin	Description	Pin	Description	Pin	Description	Pin	Description
1	Shield	11	Cap Drive X3	21	Cap Drive X13	31	Cap Drive X23
2	NC	12	Cap Drive X4	22	Cap Drive X14	32	Cap Drive X24
3	NC	13	Cap Drive X5	23	Cap Drive X15	33	Cap Drive X25
4	Ground	14	Cap Drive X6	24	Cap Drive X16	34	Cap Drive X26
5	NC	15	Cap Drive X7	25	Cap Drive X17	35	Cap Drive X27
6	Shield	16	Cap Drive X8	26	Cap Drive X18	36	Cap Drive X28
7	NC	17	Cap Drive X9	27	Cap Drive X19	37	Cap Drive X29
8	Cap Drive X0	18	Cap Drive X10	28	Cap Drive X20	38	NC
9	Cap Drive X1	19	Cap Drive X11	29	Cap Drive X21	39	NC
10	Cap Drive X2	20	Cap Drive X12	30	Cap Drive X22	40	Ground

CON2 40Pin ZIF · PH 0.5mm							
Pin	Description	Pin	Description	Pin	Description	Pin	Description
1	NC	11	NC	21	Cap Sense Y7	31	Cap Sense Y17
2	NC	12	Ground	22	Cap Sense Y8	32	Cap Sense Y18
3	NC	13	NC	23	Cap Sense Y9	33	Cap Sense Y19
4	NC	14	Cap Sense Y0	24	Cap Sense Y10	34	Cap Sense Y20
5	NC	15	Cap Sense Y1	25	Cap Sense Y11	35	Cap Sense Y21
6	NC	16	Cap Sense Y2	26	Cap Sense Y12	36	Cap Sense Y22
7	NC	17	Cap Sense Y3	27	Cap Sense Y13	37	NC
8	NC	18	Cap Sense Y4	28	Cap Sense Y14	38	Ground
9	NC	19	Cap Sense Y5	29	Cap Sense Y15	39	NC
10	NC	20	Cap Sense Y6	30	Cap Sense Y16	40	Ground

CON3 J1			
Pin	Description	Pin	Description
1	5VIN	1	Ground
2	D-	2	INT
3	D+	3	SDA
4	Ground	4	SCL
		5	VCC12C

## Driver Software:

Windows XP & Vista: single touch, mouse driver for USB Interface.

Windows 7 : dual touch, Inbox driver for USB interface

Linux: driver by request

## Utility:

Firmware adjustment utility is ready for user to fine tune the touch panel sensitivity.

Remark: Specification is subject to change without prior notice