




CLOVER DISPLAY LTD.

LCD MODULE SPECIFICATION

Model: CV9020A - _ _ _ - _ _ _ - _ _ _ - _ _

Revision	08
Engineering	Timmy Kwan 
Date	02 November 2009
Our Reference	9020

ADDRESS : ROOM 1006, 10/F WESTIN CENTRE, 26 HUNG TO ROAD, KWUN TONG,
KOWLOON, HONG KONG.

TEL : (852) 2341 3238 (SALES OFFICE) (852) 2342 8228 (GENERAL OFFICE)

FAX : (852) 2357 4237 (SALES OFFICE) (852) 2341 8785 (GENERAL OFFICE)

E-MAIL : cdl@cloverdisplay.com

URL : <http://www.cloverdisplay.com>

MODE OF DISPLAY

Display mode	Display condition	Viewing direction
STN : Yellow green	Reflective type	6 O' clock
Grey	Transflective type	12 O' clock
Blue (negative)	Transmissive type	3 O' clock
FSTN positive	Others	9 O' clock
FSTN negative		

LCD MODULE NUMBER NOTATION:

CV9020A- N N - S R - N 6 - T

| | | | | | | |
 (1) (2) (3) (4) (5) (6) (7) (8)

*(1)---Model number of standard LCD Modules

*(2)---Backlight type

N – No backlight

E – EL backlight

L – Side-lited LED backlight

M– Array LED backlight

C – CCFL

*(3)---Backlight color

N – No backlight

A – Amber

B – Blue

O– Orange

W–White

Y – Yellow green

G – Green

R – Red

*(4)---Display mode

T – TN

V – TN (Negative)

S – STN Yellow green

G – STN Grey

B – STN Blue (Negative)

F – FSTN

N – FSTN (Negative)

*(5)---Rear polarizer type

R – Reflective

F – Transflective

T – Transmissive

*(6)---Temperature range

N – Normal

W– Extended

*(7)---Viewing direction

6 – 6 O'clock

2 – 12 O'clock

3 – 3 O'clock

9 – 9 O'clock

*(8)---Special code for other requirements

(Can be omitted if not used)

GENERAL DESCRIPTION

Display mode : 128 x 64 dots, Graphic COG LCD module
 Interface : Serial
 Driving method : 1/65 duty, 1/9 bias
 Controller IC : Sitronix ST7565P or equivalent
 For the detailed information, please refer to the IC specifications

MECHANICAL DIMENSIONS

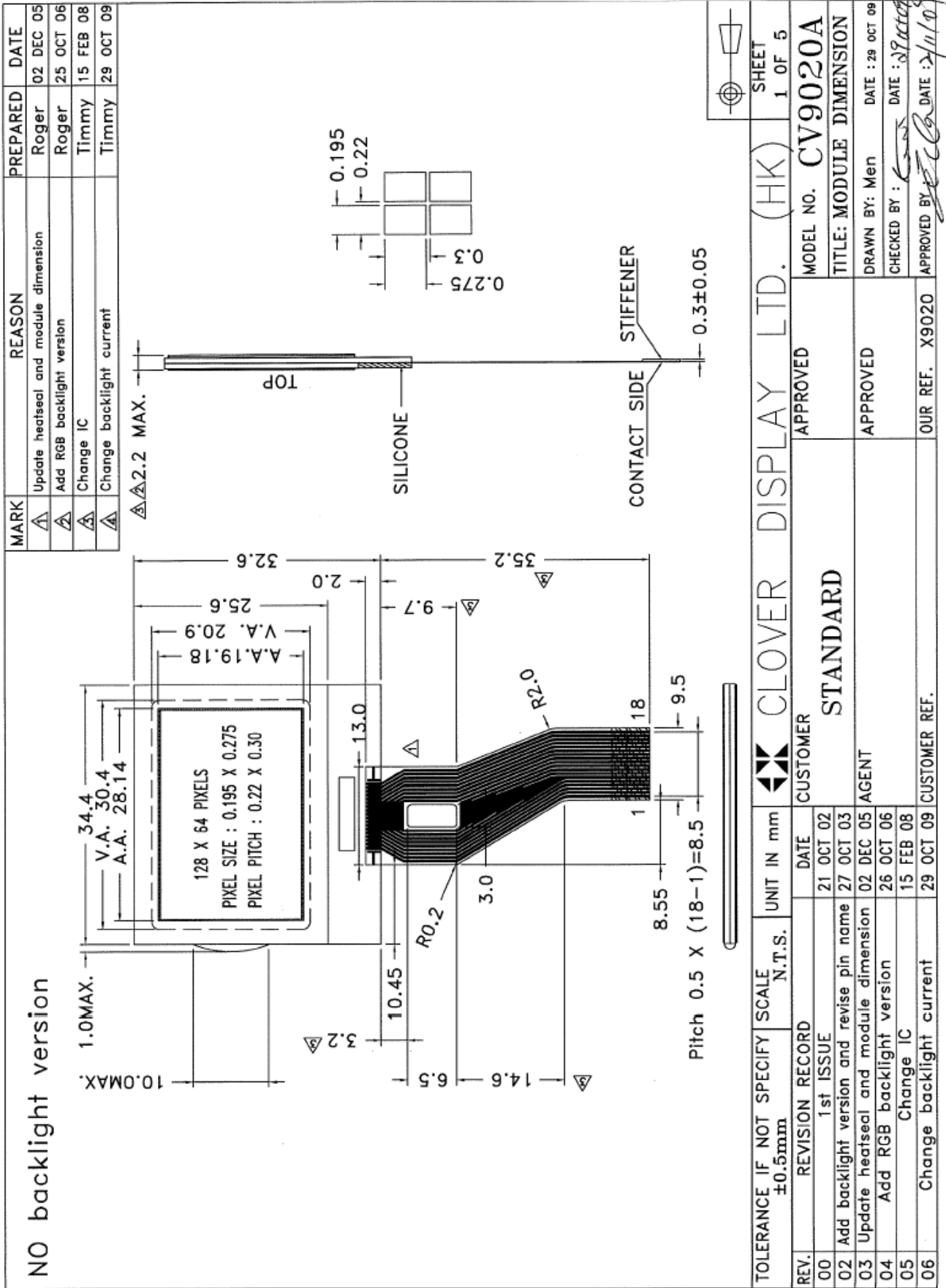
Item	Dimension	Unit	Item	Dimension	Unit
Outline Dimension			Viewing Area	30.4(L)x20.9(W)	mm
No Backlight (N)	34.4(L)x32.6(W)x2.2max(H)	mm	Dot Pitch	0.22(L)x0.30(W)	mm
LED Sided Backlight(L)	34.4(L)x32.6(W)x5.8max(H)	mm	Dot Size	0.195(L)x0.275(W)	mm
RGB Backlight	34.4(L)x32.6(W)x6.5max(H)	mm			

CONNECTOR PIN ASSIGNMENT

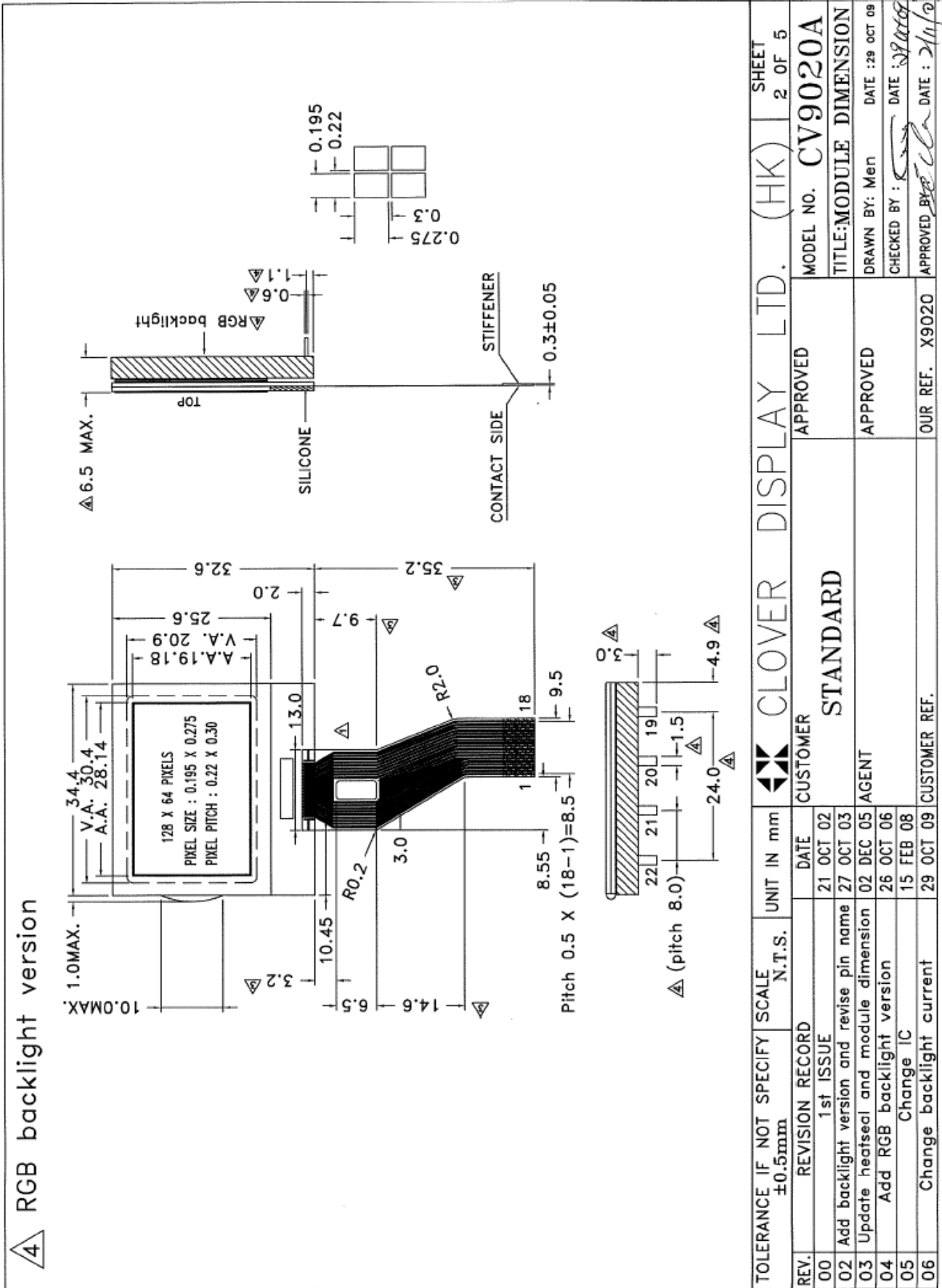
Pin No.	Symbol	Function
1	V0	Power supply for LCD
2	V1	
3	V2	
4	V3	
5	V4	
6	CAP2N	Voltage Converter
7	CAP2P	
8	CAP1P	
9	CAP1N	
10	CAP3P	
11	VOUT	Voltage Converter Input / Output
12	VSS	Ground
13	VDD	Power Supply for Logic
14	D7(SI)	Serial Data Input pin
15	D6(SCL)	Serial Clock Input pin
16	A0	Register Select pin
17	/RES	External Reset input
18	/CS1	Chip Select
(*19)	A(side-lited LED)	Supply voltage for backlight (+VE)
(*20)	K(side-lited LED)	Supply voltage for backlight (-VE)
(*19)	A(RGB)	Supply voltage for backlight (+VE)
(*20)	KR(RGB)	Supply voltage for backlight (-VE)
(*21)	KG(RGB)	Supply voltage for backlight (-VE)
(*22)	KB(RGB)	Supply voltage for backlight (-VE)

Note (*): Pin 19, 20,21,22 are for backlight versions only.

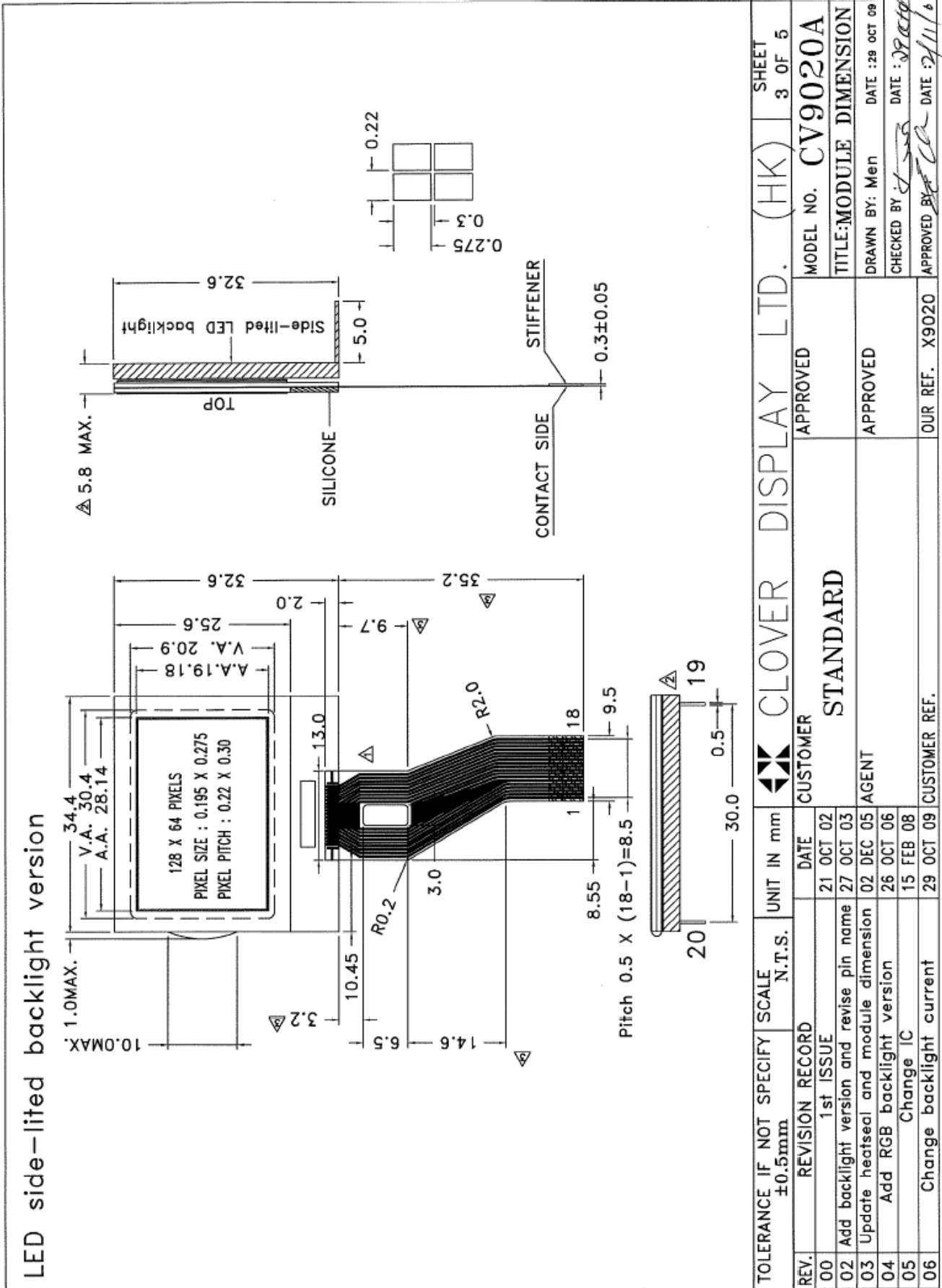
COUNTER DRAWING OF MODULE DIMENSION
(NO BACKLIGHT VERSION)



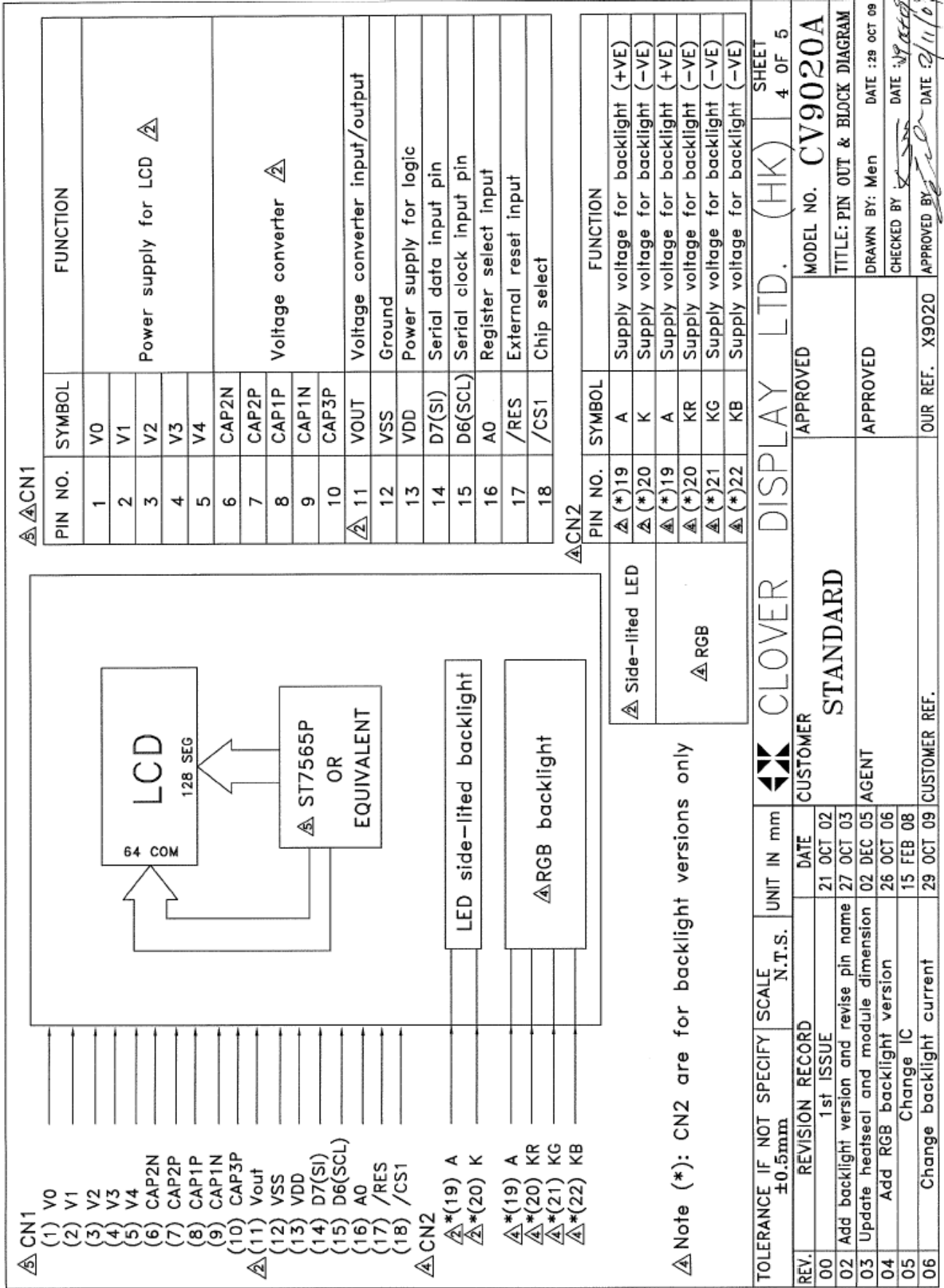
COUNTER DRAWING OF MODULE DIMENSION
(RGB BACKLIGHT VERSION)



COUNTER DRAWING OF MODULE DIMENSION
(LED SIDE-LITED BACKLIGHT VERSION)



COUNTER DRAWING OF PIN OUT & BLOCK DIAGRAM



ELECTRICAL CHARACTERISTICS

Conditions: VSS=0V, @Ta=25

Item	Symbo l	MIN.	TYP.	MAX.	Unit	Item	Symbo l	MIN.	TYP.	MAX.	Unit
Supply Voltage	VDD	3.1	3.3	3.5	V	“H”Level Input Voltage	VIH	0.8 VDD	-	VDD	V
Supply Current	IDD	-	150	225	μA	“L”Level Input Voltage	VIL	VSS	-	0.2 VDD	V
Operating voltage for LCD Note (1)	VLCD	11.4	12.0	12.6	V	-	-	-	-	-	-
Backlight Voltage						Backlight Current					
EL (@ Frequency 400Hz)	-	-	-	-	-	-	-	-	-	-	-
Side-lited LED						Side-lited LED					
White	VBL	-	3.2	-	V	White	IBL	10	12	14	mA
Blue	VBL	-	3.3	4.0	V	Blue	IBL	-	40	-	mA
Green	VBL	-	3.5	4.3	V	Green	IBL	-	40	-	mA
Red	VBL	-	2.0	2.4	V	Red	IBL	-	40	-	mA
Yellow Green	VBL	-	2.0	2.4	V	Yellow Green	IBL	-	40	-	mA
Amber	VBL	-	5.0	-	V	Amber	IBL	-	35	40	mA
RGB LED(Note 2 & 3)						RGB LED					
Red	KR	-	5.0	-	V	Red	KR	-	14	20	mA
Green	KG	-	5.0	-	V	Green	KG	-	22	30	mA
Blue	KB	-	5.0	-	V	Blue	KB	-	10	16	mA

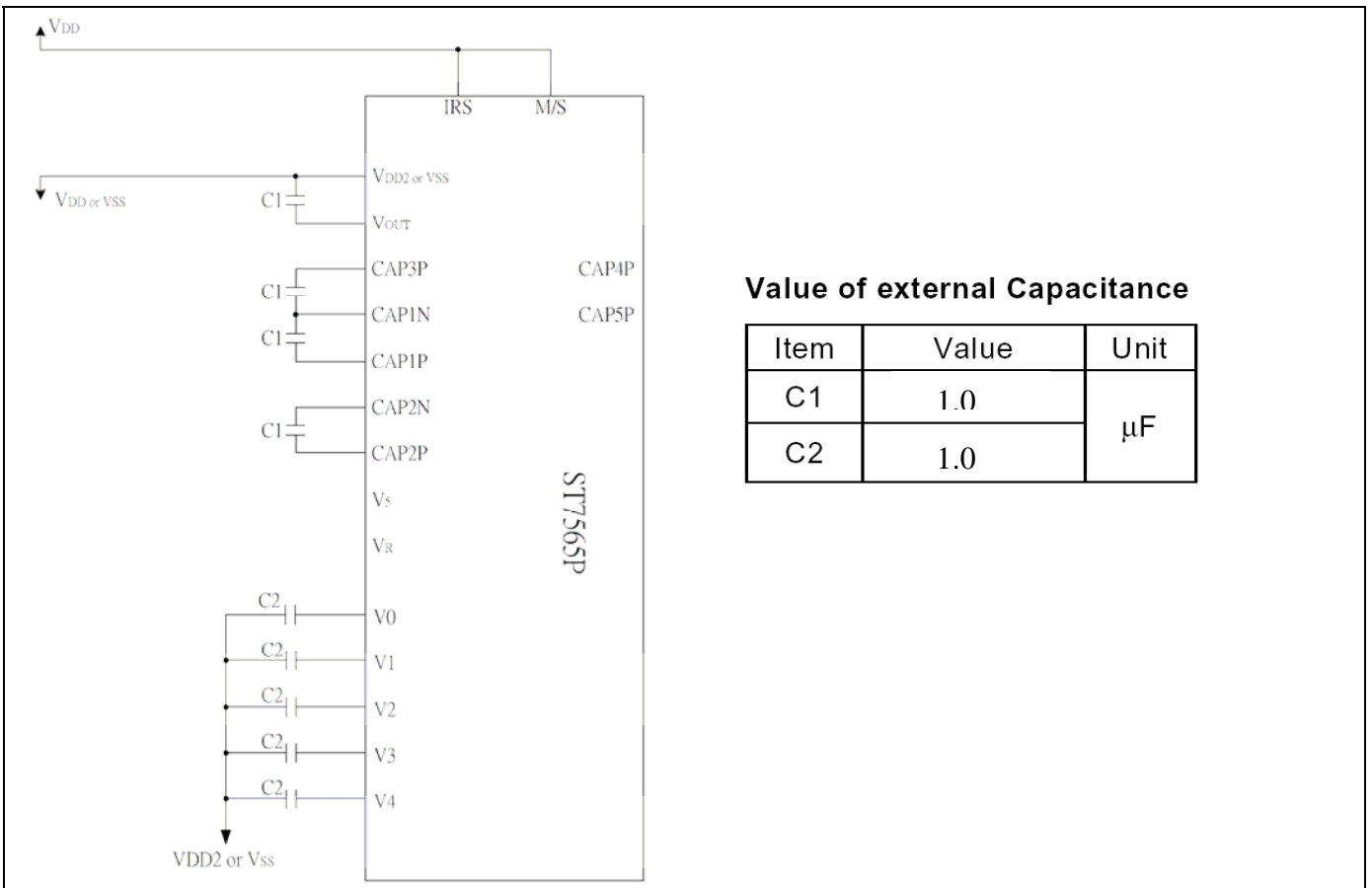
Note(1) Please refer to Connection Example (4X Boosting Circuit)

Note(2) When both diodes are lightened simultaneously, the above values should be applied 50% Max. of each value

Note(3) When all the diodes are lightened simultaneously, the value should be applied 30% Max. of each values

CONNECTION EXAMPLE

4X Boosting Circuit



Value of external Capacitance

Item	Value	Unit
C1	1.0	μF
C2	1.0	

ABSOLUTE MAXIMUM RATINGS

Please make sure not to exceed the following maximum rating values under the worst application conditions

Item	Symbol	Rating (for normal temperature)	Rating (for wide temperature)	Unit
Supply Voltage	VDD	-0.3 to 3.6	-0.3 to 3.6	V
Operating Temperature	T _{opr}	0 to 50	-20 to 70	
Storage Temperature	T _{stg}	-10 to 60	-30 to 80	

INSTRUCTION TABLE

Table 16: Table of ST7565P Commands

(Note) *: disabled data

Command	Command Code										Function		
	A0	/RD	/WR	D7	D6	D5	D4	D3	D2	D1		D0	
(1) Display ON/OFF	0	1	0	1	0	1	0	1	1	1	0	1	LCD display ON/OFF 0: OFF, 1: ON
(2) Display start line set	0	1	0	0	1	Display start address						Sets the display RAM display start line address	
(3) Page address set	0	1	0	1	0	1	1	Page address				Sets the display RAM page address	
(4) Column address set upper bit	0	1	0	0	0	0	1	Most significant column address				Sets the most significant 4 bits of the display RAM column address.	
Column address set lower bit	0	1	0	0	0	0	0	Least significant column address				Sets the least significant 4 bits of the display RAM column address.	
(5) Status read	0	0	1	Status				0	0	0	0	0	Reads the status data
(6) Display data write	1	1	0	Write data								Writes to the display RAM	
(7) Display data read	1	0	1	Read data								Reads from the display RAM	
(8) ADC select	0	1	0	1	0	1	0	0	0	0	0	1	Sets the display RAM address SEG output correspondence 0: normal, 1: reverse
(9) Display normal/reverse	0	1	0	1	0	1	0	0	1	1	0	1	Sets the LCD display normal/reverse 0: normal, 1: reverse
(10) Display all points ON/OFF	0	1	0	1	0	1	0	0	1	0	0	1	Display all points 0: normal display 1: all points ON
(11) LCD bias set	0	1	0	1	0	1	0	0	0	1	0	1	Sets the LCD drive voltage bias ratio 0: 1/9 bias, 1: 1/7 bias (ST7565P)
(12) Read/modify/write	0	1	0	1	1	1	0	0	0	0	0	0	Column address increment At write: +1 At read: 0
(13) End	0	1	0	1	1	1	0	1	1	1	0	0	Clear read/modify/write
(14) Reset	0	1	0	1	1	1	0	0	0	0	1	0	Internal reset
(15) Common output mode select	0	1	0	1	1	0	0	0	*	*	*	1	Select COM output scan direction 0: normal direction 1: reverse direction
(16) Power control set	0	1	0	0	0	1	0	1	Operating mode			Select internal power supply operating mode	
(17) V ₀ voltage regulator internal resistor ratio set	0	1	0	0	0	1	0	0	Resistor ratio			Select internal resistor ratio(R _b /R _a) mode	
(18) Electronic volume mode set Electronic volume register set	0	1	0	1	0	0	0	0	0	0	0	1	Set the V ₀ output voltage electronic volume register
(19) Static indicator ON/OFF Static indicator register set	0	1	0	1	0	1	0	1	1	0	0	1	0: OFF, 1: ON Set the flashing mode
(20) Booster ratio set	0	1	0	1	1	1	1	1	0	0	0	0	select booster ratio 00: 2x,3x,4x 01: 5x 11: 6x
(21) Power saver													Display OFF and display all points ON compound command
(22) NOP	0	1	0	1	1	1	0	0	0	0	1	1	Command for non-operation
(23) Test	0	1	0	1	1	1	1	*	*	*	*	*	Command for IC test. Do not use this command

RECOMMENDED INITIAL SETTINGS

Initial Display Line : 40H

LCD Bias Select : A2H

Power Control : 2FH

Regulator Resistor Select : 26H

Set Reference Voltage Register : 36H

SHL Select : C8H

DISPLAY DATA RAM (DDRAM)

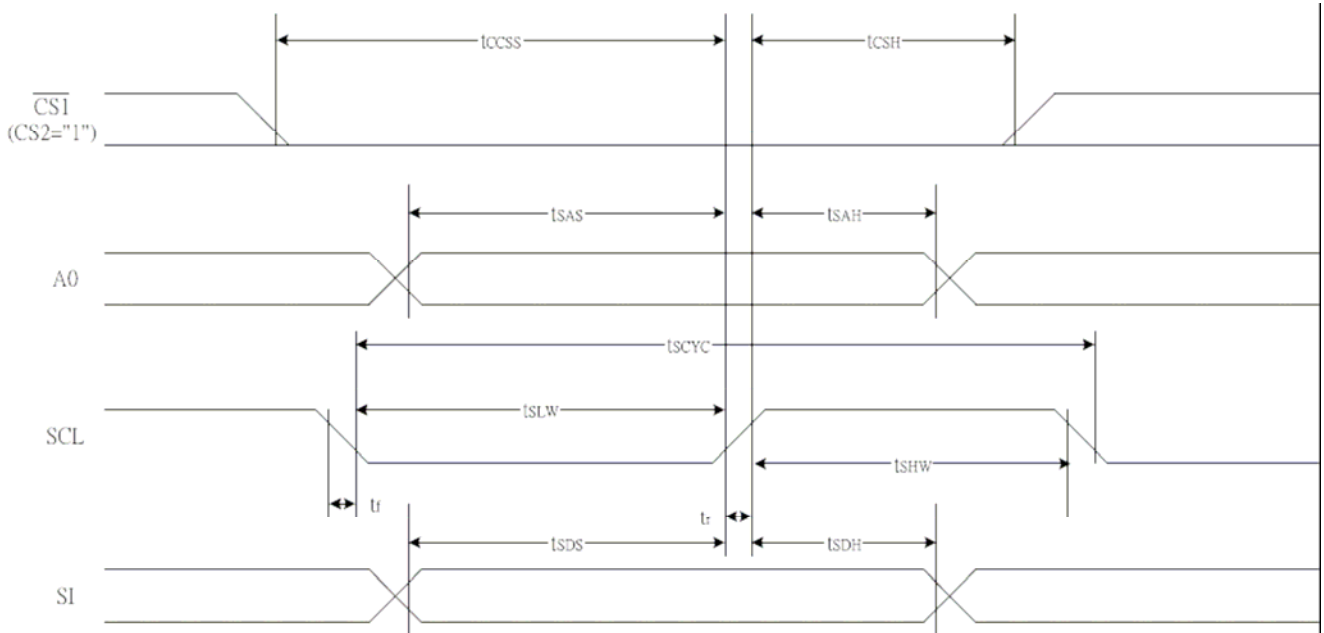
Page Address				Data		Line Address	COM Output
D3	D2	D1	D0				
0	0	0	0	D0	Page 0	00H	COM0
				D1		01H	COM1
				D2		02H	COM2
				D3		03H	COM3
				D4		04H	COM4
				D5		05H	COM5
				D6		06H	COM6
				D7		07H	COM7
0	0	0	1	D0	Page 1	08H	COM8
				D1		09H	COM9
				D2		0AH	COM10
				D3		0BH	COM11
				D4		0CH	COM12
				D5		0DH	COM13
				D6		0EH	COM14
				D7		0FH	COM15
0	0	1	0	D0	Page 2	10H	COM16
				D1		11H	COM17
				D2		12H	COM18
				D3		13H	COM19
				D4		14H	COM20
				D5		15H	COM21
				D6		16H	COM22
				D7		17H	COM23
0	0	1	1	D0	Page 3	18H	COM24
				D1		19H	COM25
				D2		1AH	COM26
				D3		1BH	COM27
				D4		1CH	COM28
				D5		1DH	COM29
				D6		1EH	COM30
				D7		1FH	COM31
0	1	0	0	D0	Page 4	20H	COM32
				D1		21H	COM33
				D2		22H	COM34
				D3		23H	COM35
				D4		24H	COM36
				D5		25H	COM37
				D6		26H	COM38
				D7		27H	COM39
0	1	0	1	D0	Page 5	28H	COM40
				D1		29H	COM41
				D2		2AH	COM42
				D3		2BH	COM43
				D4		2CH	COM44
				D5		2DH	COM45
				D6		2EH	COM46
				D7		2FH	COM47
0	1	1	0	D0	Page 6	30H	COM48
				D1		31H	COM49
				D2		32H	COM50
				D3		33H	COM51
				D4		34H	COM52
				D5		35H	COM53
				D6		36H	COM54
				D7		37H	COM55
0	1	1	1	D0	Page 7	38H	COM56
				D1		39H	COM57
				D2		3AH	COM58
				D3		3BH	COM59
				D4		3CH	COM60
				D5		3DH	COM61
				D6		3EH	COM62
				D7		3FH	COM63
1	0	0	0	D0	Page 8		COMS

S0	88	00	S1	82	01	S2	81	02	S3	80	03	S4	7F	04	S5	7E	05	S6	7D	06	S7	7C	07	S8	7B	08
S123	08	7B	S124	07	7C	S125	06	7D	S126	05	7E	S127	04	7F	S128	03	80	S129	02	81	S130	01	82	S131	00	83

0	D0	ADC	Column address
1	D0		
LCD Out	D0		

Regardless of the display start line address,
 1/65duty => 64th line,
 1/49duty => 48th line,
 1/33duty => 32th line,
 1/55duty => 54th line,
 1/53duty => 52th line.

SERIAL INTERFACE TIMING DIAGRAM

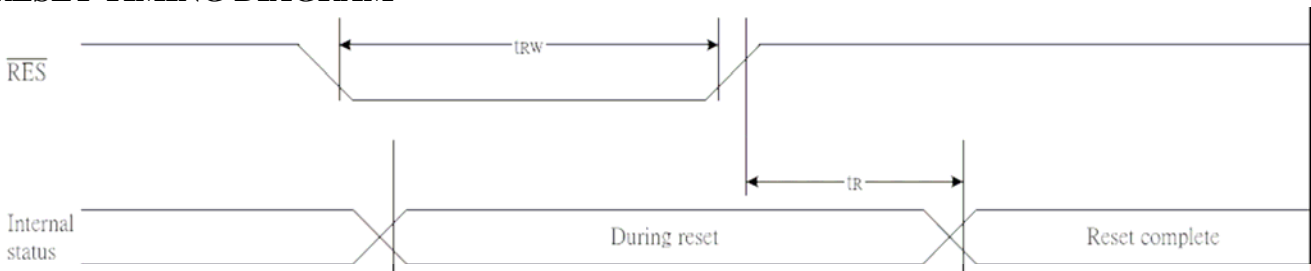


SERIAL INTERFACE TIMING CHARACTERISTICS

(VDD = 3.3V, Ta = -30 to 85°C)

Item	Signal	Symbol	Condition	Rating		Units
				Min.	Max.	
Serial Clock Period	SCL	T_{scyc}		50	—	ns
SCL "H" pulse width		T_{shw}		25	—	
SCL "L" pulse width		T_{slw}		25	—	
Address setup time	A0	T_{sas}		20	—	
Address hold time		T_{sah}		10	—	
Data setup time	SI	T_{sds}		20	—	
Data hold time		T_{sdh}		10	—	
CS-SCL time	CS	T_{css}		20	—	
CS-SCL time		T_{csh}		40	—	

RESET TIMING DIAGRAM



RESET TIMING

(VDD = 3.3V, Ta = -30 to 85°C)

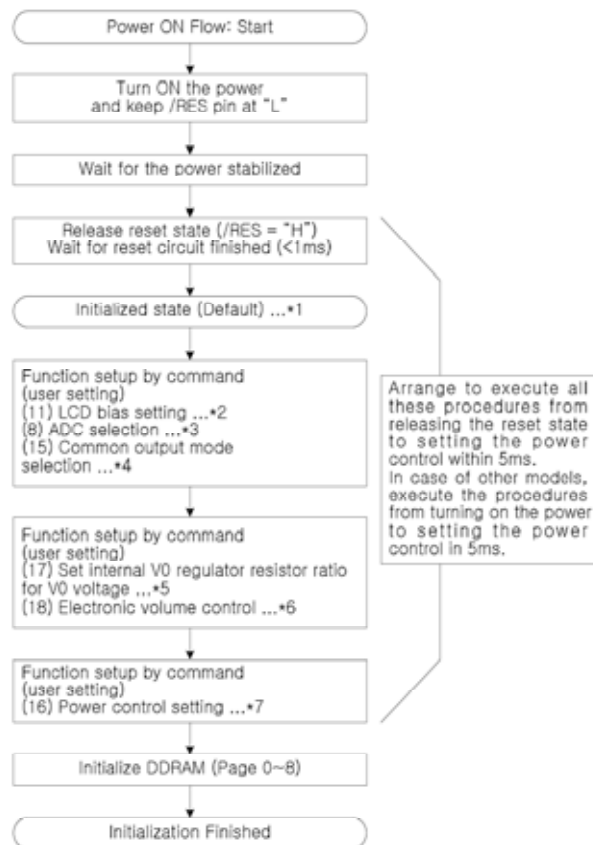
Item	Signal	Symbol	Condition	Rating			Units
				Min.	Typ.	Max.	
Reset time		t_r		—	—	1.0	us
Reset "L" pulse width	/RES	t_{RW}		1.0	—	—	us

THE RESET CIRCUIT

When the /RES input comes to the "L" level, these LSIs return to the default state. Their default states are as follows:

1. Display OFF
2. Normal display
3. ADC select: Normal (ADC command D0 = "L")
4. Power control register: (D2, D1, D0) = (0, 0, 0)
5. Serial interface internal register data clear
6. LCD power supply bias rate:
 - 1/65 DUTY = 1/9 bias
 - 1/49, 1/55, 1/53 DUTY = 1/8 bias
 - 1/33 DUTY = 1/6 bias
7. All-indicator lamps-on OFF (All-indicator lamps ON/OFF command D0 = "L")
8. Power saving clear
9. V₀ voltage regulator internal resistors Ra and Rb separation
10. Output conditions of SEG and COM terminals
SEG=VSS, COM=VSS
11. Read modify write OFF
12. Static indicator OFF Static indicator register : (D1, D2) = (0, 0)
13. Display start line set to first line
14. Column address set to Address 0
15. Page address set to Page 0
16. Common output status normal
17. V₀ voltage regulator internal resistor ratio set mode clear
18. Electronic volume register set mode clear Electronic volume register :
(D5, D4, D3, D2, D1, D0) = (1, 0, 0, 0, 0, 0)
19. Test mode clear

INITIALIZATION METHOD



* The target time of 5ms will result to vary depending on the panel characteristics and the capacitance of the smoothing capacitor. Therefore, we suggest you to conduct an operation check using the actual equipment.

Notes: Refer to respective sections or paragraphs listed below.

*1: Description of functions; Resetting circuit

*2: Command description; LCD bias setting

*3: Command description; ADC selection

*4: Command description; Common output state selection

*5: Description of functions; Power circuit & Command description; Setting the built-in resistance ratio for regulation of the V0 voltage

*6: Description of functions; Power circuit & Command description; Electronic volume control

*7: Description of functions; Power circuit & Command description; Power control setting

ELECTRO-OPTICAL CHARACTERISTICS

MEASURING CONDITION: POWER SUPPLY = $V_{OP} / 64 \text{ Hz}$
 TEMPERATURE = $23 \pm 5 \text{ }^\circ\text{C}$
 RELATIVE HUMIDITY = $60 \pm 20 \%$

ITEM	SYMBOL	UNIT	TYP. STN
RESPONSE TIME	Ton	ms	220
	Toff	ms	280
CONTRAST RATIO	Cr	-	12
VIEWING ANGLE (6 O'clock) Cr \geq 2	V3:00	°	40
	V6:00	°	70
	V9:00	°	40
	V12:00	°	50

THE ELECTRO-OPTICAL CHARACTERISTICS ARE MEASURED VALUE BUT NOT GUARANTEED ONES.

RELIABILITY OF LCD MODULE

ITEM	TEST CONDITION FOR NORMAL TEMPERATURE	TEST CONDITION FOR WIDE TEMPERATURE	TIME
High temperature operating	50°C	70°C	240 hours
Low temperature operating	0°C	-20°C	240 hours
High temperature storage	60°C	80°C	240 hours
Low temperature storage	-10°C	-30°C	240 hours
Temperature-humidity storage	40°C 90% R.H.	60°C 90% R.H.	96 hours
Temperature cycling	-10°C to 60°C 30 Min Dwell	-30°C to 80°C 30 Min Dwell	5 cycle
Vibration Test at LCM Level	Freq 10-55 Hz Sweep rate: 10-55-10 at 1 min Sweep mode Linear Displacement: 2 mm p-p 1 Hour each for X, Y, Z	Freq 10-55 Hz Sweep rate: 10-55-10 at 1 min Sweep mode Linear Displacement: 2 mm p-p 1 Hour each for X, Y, Z	—

SAMPLING METHOD

SAMPLING PLAN: MIL-STD 105E

CLASS OF AQL: LEVEL II/ SINGLE SAMPLING
 MAJOR-0.65% MINOR – 1.5%

QUALITY STANDARD

DEFECT	CRITERIA	TYPE	FIGURE
SHORT CIRCUIT	-	MAJOR	-
MISSING SEGMENT	-	MAJOR	-
UNEVEN / POOR CONTRAST	-	MAJOR	-
CROSS TALK	-	MAJOR	-
PIN HOLE	$MAX(a,b) \leq 1/4 W$	MINOR	1
EXCESS SEGMENT	$MAX(c,d) \leq 1/4 T$	MINOR	1
BUBBLES	$d^* \geq 0.2$ QTY=0	MINOR	2
BLACKS SPOTS	$d \leq 0.3$ N.A.** $0.3 < d \leq 0.4$ QTY≤1 $0.4 < d$ QTY=0	MINOR	2
LINE SCRATCHES	$x \geq 0.7$ $y \geq 0.05$ QTY=0	MINOR	3
BLACK LINE	$x \geq 0.7$ $y \geq 0.05$ QTY=0	MINOR	3

*d = MAX (d₁,d₂)

** N. A . = NOT APPLICABLE

DEFECT TABLE : B

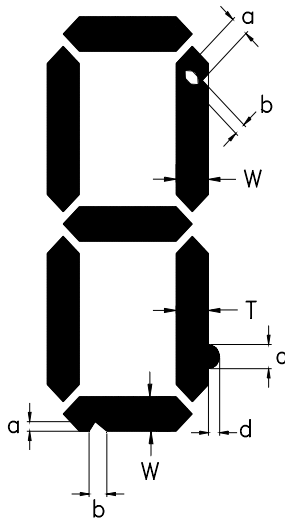
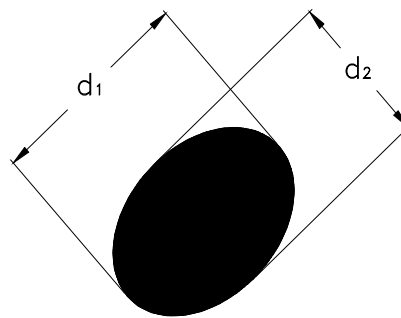
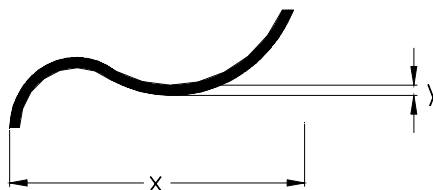


fig . 1



POLARIZER BUBBLES / SPOTS

fig . 2



LINE SCRATCHES / BLACK LINE

fig . 3

QUALITY STANDARD (CONT .)

DEFECT		CRITERIA	TYPE	FIGURE
CHIPS	CONTACT EDGE	$e \leq 1/2T$ $f \leq 1/3W$ $g \leq 3.5$	MINOR	4
	BOTTOM GLASS	$p \leq 1.0$ $q \leq 3.5$ $r \leq 1/2T$		4
	CORNER	$a \leq 1.5$ $b \leq W$		4
	TOP GLASS	$a \leq 3.0$ $b \leq 1/3T$ $c \leq 1/2W$		5
GLASS PROTRUSION		$a \leq 1/4 W$	MINOR	6
RAINBOW		-	MINOR	-

UNLESS STATE OTHERWISE , ALL UNIT ARE IN MILLIMETER .

DEFECT TABLE : B

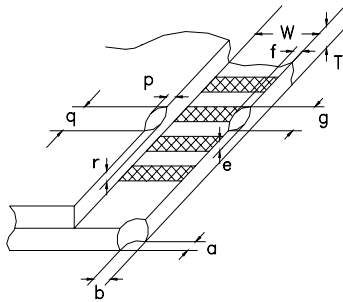


fig . 4

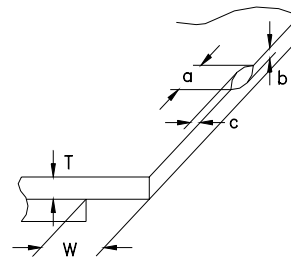


fig . 5

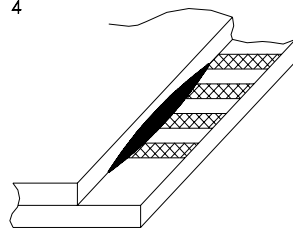
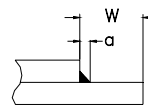


fig . 6



HANDLING PRECAUTIONS

(1) CAUTION OF LCD HANDLING & CLEANING

Use soft cloth with solvent (recommended below) to clean the display surface and wipe lightly.

- Isopropyl alcohol, ethyl alcohol, trichlorotrifluoroethane

Do not wipe the display surface with dry or hard materials that will damage the polarizer surface. Do not use the following solvent;

-water, ketone, aromatics

(2) CAUTION AGAINST STATIC CHARGE

The LCD modules use CMOS LSI drivers, so customers are recommend that any unused input terminal would be connected to V_{DD} or V_{SS} , do not input any signals before power is turned on, and ground your body, work/assembly areas, assembly equipment to protect against static electricity.

Remove the protective film slowly and, if possible, under ESD control device like ion blower and humidity of working room should be kept over 50%RH to reduce risk of static charge.

(3) PACKAGING

Avoid intense shock and falls from a height and do not operate or store them exposed direct to sunshine or high temperature/humidity.

(4) CAUTION FOR OPERATION

It is an indispensable condition to drive LCD's within the specified voltage limit since the higher voltage than the limit causes the shorter LCD life. The use of direct current drive should be avoided because an electrochemical reaction due to direct current causes LCD's undesirable deterioration.

Response time will be extremely delayed at low temperature, and LCD's show dark color at high temperature. However those phenomena do not mean malfunction or out of order with LCD's.

Some font will be abnormally displayed when the display area is pushed hard during operation. But it resumes normal condition after turning off once.

(5) SOLDERING (for Pin type)

It is recommended to complete dip soldering at 270 °C or hand soldering at 280 °C within 3 seconds. The soldering position is at least 3mm apart from the pin head. Wave or reflow soldering are not recommended. Metal pins should not be soldered for more than 3 times and each soldering should be done after cool down of metal pins

(6) SAFETY

For crash damaged or unnecessary LCD's, it is recommended to wash off liquid crystal by either of solvents such as acetone and ethanol and should be burned up later.

When any liquid leaked out of a damaged glass cell comes in contact with your hands, wash it off with soap and water.

WARRANTY

CLOVER will replace or repair any of her LCD module in accordance with her LCD specification for a period of one year from date of shipment. The warranty liability of Clover is limited to repair and/or replacement. Clover will not be responsible for any subsequent or consequential event.