

RAFIX 22 FS⁺ Selector switches

→ The illuminated selector switches are provided with translucent handle markings. These are opaque on the non-illuminated versions.

Technical Data

→ General information

Actuator	handle
Marking of handle	see order block
Color of front ring	see order block
Form of collar	see order block

→ Dimensions

Dimensions of collar	see order block
Overall height	22.24 mm
Mounting depth	PCB 9.2 mm, QC 27 mm
Mounting hole	22.3 mm
Key grid	30 x 30 mm

→ Mechanical design

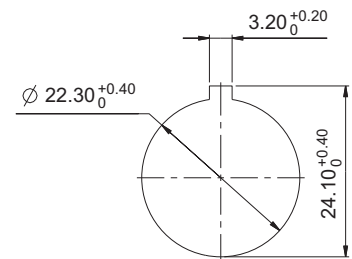
Mounting	ring nut
Contact function	see order block
Illuminability	see order block
Rotating angle	see order block
Torque for nut ring	1.2 Nm

→ Mechanical characteristics

Torque max.	1.5 Nm
-------------	--------

→ Other specifications

Operating life (operations)	500,000 momentary / 300,000 latching
Operating life (operations)	650,000 momentary / 400,000 latching
Degree of protection from front side	IP65 (DIN EN 60529)
Ambient temp. operating min.	-25 °C
Ambient temp. operating max.	+70 °C
Storage temperature min.	-40 °C
Storage temperature max.	+80 °C
Environmental resistance	acc. to IEC 60068-2-14, -30, -33 and -78
Salt spray	IEC 600 68-2-11
ROHS compliant	yes
REACH compliant	yes



Panel cut-out to IEC 60947-5-1

Approvals



IEC 60947-5-x



UL 508



Distributed by:




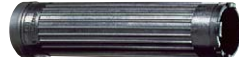
Accessories RAFIX 22 FS⁺ - Selector switches

Description	Photo	Order no.	Additional accessories see page
RAFIX 22 FS ⁺ - Contact block PCB silver, Universal, with light conductor		-	2 - 247
RAFIX 22 FS ⁺ - Contact block QC gold, Universal, with light conductor		-	2 - 253
RAFIX 22 FS ⁺ - Contact block QC silver, Universal, with light conductor		-	2 - 256
RAFIX FS - Contact block PCB gold, Universal		-	2 - 243
RAFIX FS - Contact block PCB gold, Universal, with light conductor		-	2 - 242

CONTROL COMPONENTS

RAFIX 22 FS⁺ - ACTUATORS

**- Table (continued) -
Accessories RAFIX 22 FS⁺ - Selector switches**

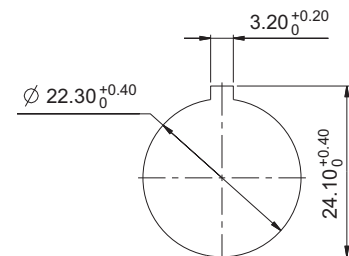
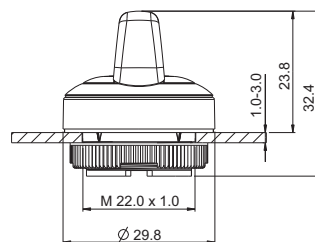
→ Description	Photo	Order no.	Additional accessories see page
RAFIX FS - Contact block PCB silver, Universal		-	2 - 248
Fixing spanner for ring nut		5.05.800.062/0000	2 - 145, 2 - 261, 5 - 25

2

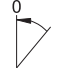


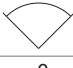
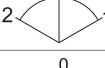



RAFIX 22 FS⁺ Selector switch, round collar

Technical data see page 2 - 173



Panel cut-out to IEC 60947-5-1

→ Illuminability	Contact function	Rotating angle	Diagram	Order no.	
				Plastic front ring	Metallized front ring
yes	momentary	1 x 40°		1.30.272.001/22xx	1.30.272.002/2200
yes	momentary	2 x 40°		1.30.272.026/22xx	1.30.272.027/2200
yes	latching	1 x 90°, form L		1.30.272.101/22xx	1.30.272.102/2200
yes	latching	1 x 90°, form V		1.30.272.201/22xx	1.30.272.202/2200
yes	latching	2 x 60°		1.30.272.301/22xx	1.30.272.302/2200
yes	latching 1 x 90° and momentary 1 x 40°	1 x 90° and 1 x 40°		1.30.272.426/22xx	1.30.272.427/2200

xx = Front ring color: black = 01, red = 03, yellow = 04, green = 05, blue = 06, slate grey = 07, silver grey = 08

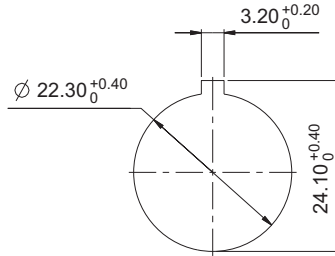
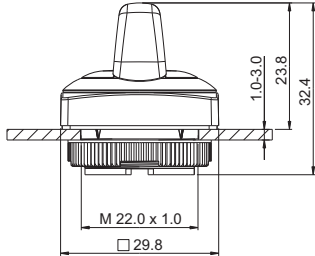
Other contact functions and handle marking colors available on request.

For colored illumination of the handle marking please use colored LED.

DISTRIBUTED BY TEXIM EUROPE



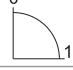

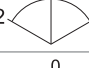

RAFIX 22 FS⁺ Selector switch, square collar

Technical data see page 2 - 173



Panel cut-out to IEC 60947-5-1



→ Illuminability	Contact function	Rotating angle	Order no.	
			Plastic front ring	Metallized front ring
yes	momentary	1 x 40° 	1.30.272.051/22xx	1.30.272.052/2200
yes	momentary	2 x 40° 	1.30.272.076/22xx	1.30.272.077/2200
yes	latching	1 x 90°, form L 	1.30.272.151/22xx	1.30.272.152/2200
yes	latching	1 x 90°, form V 	1.30.272.251/22xx	1.30.272.252/2200
yes	latching	2 x 60° 	1.30.272.351/22xx	1.30.272.352/2200
yes	latching 1 x 90° and momentary 1 x 40°	1 x 90° and 1 x 40° 	1.30.272.476/22xx	1.30.272.477/2200

xx = Front ring color: black = 01, red = 03, yellow = 04, green = 05, blue = 06, slate grey = 07, silver grey = 08

Other contact functions and handle marking colors available on request.

For colored illumination of the handle marking please use colored LED.

The Netherlands



Elektrostraat 17
NL-7483 PG Haaksbergen

T: +31 (0)53 573 33 33
F: +31 (0)53 573 33 30
E: nl@texim-europe.com

Belgium



Zuiderlaan 14 bus 10
B-1731 Zellik

T: +32 (0)2 462 01 00
F: +32 (0)2 462 01 25
E: belgium@texim-europe.com

UK & Ireland



St. Mary's House, Church Lane
Carlton Le Moorland
Lincoln LN5 9HS

T: +44 (0)1522 789 555
F: +44 (0)845 299 22 26
E: uk@texim-europe.com

Germany North



Bahnhofstrasse 92
D-25451 Quickborn

T: +49 (0)4106 627 07-0
F: +49 (0)4106 627 07-20
E: germany@texim-europe.com

Germany South



Martin-Kollar-Strasse 9
D-81829 München

T: +49 (0)89 436 086-0
F: +49 (0)89 436 086-19
E: germany@texim-europe.com

Austria



Warwitzstrasse 9
A-5020 Salzburg

T: +43 (0)662 216 026
F: +43 (0)662 216 026-66
E: austria@texim-europe.com

Nordic region



Sdr. Jagtvej 12
DK-2970 Hørsholm

T: +45 88 20 26 30
F: +45 88 20 26 39
E: nordic@texim-europe.com

Italy



Via Matteotti 43
IT-20864 Agrate Brianza (MB)

T: +39 (0)395 967 226
F: +39 (0)395 967 226
E: italy@texim-europe.com

General information



info@texim-europe.com
www.texim-europe.com